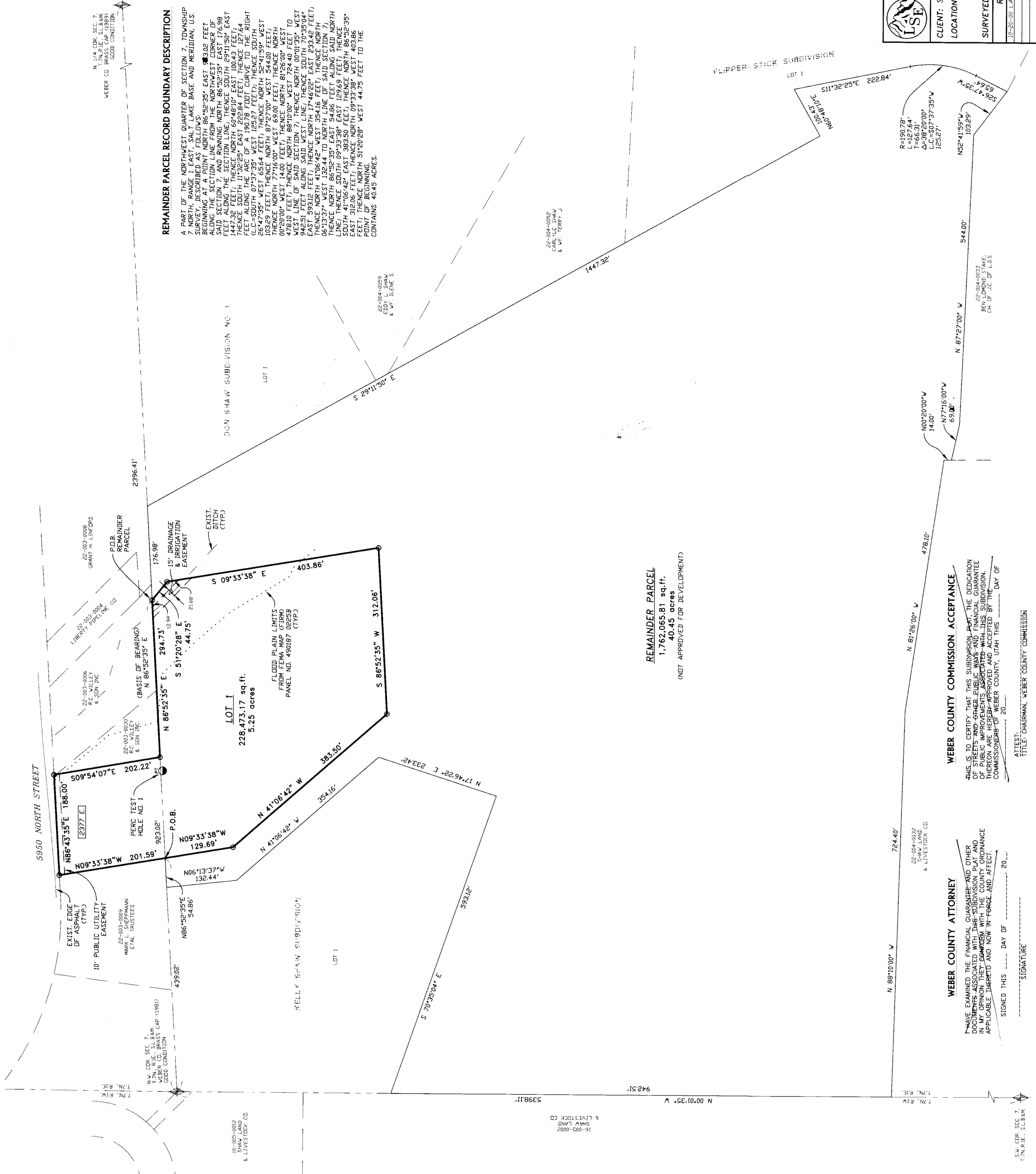


# BLACK SHEEP ESTATES SUBDIVISION

## A PART OF THE N.W. 1/4 OF SECTION 7, AND THE S.W. 1/4 OF SECTION 6, T.7N., R.1E., S.L.B. & M. WEBER COUNTY, UTAH DECEMBER 2000

RECEIVED  
OCT 18 2001  
Weber County Surveyor



**SURVEYOR'S CERTIFICATE**

I, DALLAS K. BUTTARS, A PROFESSIONAL LAND SURVEYOR IN THE STATE OF UTAH, HAVE BEEN DULY QUALIFIED AND LICENSED BY THE BOARD OF PROFESSIONAL LAND SURVEYORS OF THE STATE OF UTAH. I HAVE CONDUCTED A CAREFUL AND THOROUGH SURVEY OF THE ABOVE DESCRIBED LOTS AND HAVE FOUND THEM TO ACCURATELY REPRESENT THE LOTS AS DESCRIBED IN THE SUBDIVISION PLAT. I HAVE FOUND THAT THE CORNER MARKERS AND BENCHMARKS ARE IN PLACE AND ACCURATELY LOCATED. I HAVE FOUND THAT THE LOTS ARE BEING SURVEYED ACCORDING TO THE SUBDIVISION PLAT AND THAT THE LOTS ARE BEING SURVEYED ACCORDING TO THE SUBDIVISION PLAT.

SIGNED THIS 30th DAY OF MARCH 2000  
DALLAS K. BUTTARS  
SURVEYOR

**OWNER'S DECLARATION**

I, THE UNDERSIGNED OWNER OF THE HEREIN DESCRIBED TRACT OF LAND, HAVE BEEN ADVISED BY THE SURVEYOR THAT THE SURVEY HAS BEEN CONDUCTED ACCORDING TO THE SUBDIVISION PLAT AND THAT THE LOTS ARE BEING SURVEYED ACCORDING TO THE SUBDIVISION PLAT. I HAVE FOUND THAT THE CORNER MARKERS AND BENCHMARKS ARE IN PLACE AND ACCURATELY LOCATED. I HAVE FOUND THAT THE LOTS ARE BEING SURVEYED ACCORDING TO THE SUBDIVISION PLAT AND THAT THE LOTS ARE BEING SURVEYED ACCORDING TO THE SUBDIVISION PLAT.

SIGNED THIS 30th DAY OF MARCH 2000  
[Signature]

**ACKNOWLEDGMENT**

I, THE UNDERSIGNED SURVEYOR, HAVE BEEN DULY QUALIFIED AND LICENSED BY THE BOARD OF PROFESSIONAL LAND SURVEYORS OF THE STATE OF UTAH. I HAVE CONDUCTED A CAREFUL AND THOROUGH SURVEY OF THE ABOVE DESCRIBED LOTS AND HAVE FOUND THEM TO ACCURATELY REPRESENT THE LOTS AS DESCRIBED IN THE SUBDIVISION PLAT. I HAVE FOUND THAT THE CORNER MARKERS AND BENCHMARKS ARE IN PLACE AND ACCURATELY LOCATED. I HAVE FOUND THAT THE LOTS ARE BEING SURVEYED ACCORDING TO THE SUBDIVISION PLAT AND THAT THE LOTS ARE BEING SURVEYED ACCORDING TO THE SUBDIVISION PLAT.

SIGNED THIS 30th DAY OF MARCH 2000  
DALLAS K. BUTTARS  
SURVEYOR

**BOUNDARY DESCRIPTION**

A PART OF THE NORTHWEST QUARTER OF SECTION 6 AND THE NORTHWEST QUARTER OF SECTION 7, T.7N., R.1E., S.L.B. & M., WEBER COUNTY, UTAH, BEING MORE PARTICULARLY DESCRIBED AS FOLLOWS: BEGIN AT THE INTERSECTION OF THE NORTHWEST CORNER OF SAID SECTION 7 AND THE NORTHWEST CORNER OF SAID SECTION 6; THENCE NORTH 86°52'35\"/>

**WEBER-MORGAN HEALTH DEPARTMENT**

I HEREBY CERTIFY THAT THE SOILS, PERCOLATION, WATERS, AND SITE CONDITION OF THE ABOVE DESCRIBED LOTS HAVE BEEN INVESTIGATED BY THIS OFFICE AND ARE APPROVED FOR INSTALLATION OF SEWERAGE AND WASTE WATER TREATMENT PLANTS.

SIGNED THIS 30th DAY OF MARCH 2000  
[Signature]

**WEBER COUNTY COMMISSION ACCEPTANCE**

I HAVE EXAMINED THE FINANCIAL GUARANTEE AND OTHER DOCUMENTS ASSOCIATED WITH THIS SUBDIVISION PLAT AND HAVE FOUND THEM TO BE IN ACCORDANCE WITH THE APPLICABLE LAWS AND RULES AND AFFECT APPLICABLE LAWS AND RULES AND AFFECT APPLICABLE LAWS AND RULES.

SIGNED THIS 30th DAY OF MARCH 2000  
[Signature]

**WEBER COUNTY ATTORNEY**

I HAVE EXAMINED THE FINANCIAL GUARANTEE AND OTHER DOCUMENTS ASSOCIATED WITH THIS SUBDIVISION PLAT AND HAVE FOUND THEM TO BE IN ACCORDANCE WITH THE APPLICABLE LAWS AND RULES AND AFFECT APPLICABLE LAWS AND RULES.

SIGNED THIS 30th DAY OF MARCH 2000  
[Signature]

**WEBER COUNTY SURVEYOR**

I HEREBY CERTIFY THAT I HAVE INVESTIGATED THE LOTS OF THIS SUBDIVISION PLAT AND FOUND THEM TO BE ACCURATELY SURVEYED AND TO ACCURATELY REPRESENT THE LOTS AS DESCRIBED IN THE SUBDIVISION PLAT. I HAVE FOUND THAT THE CORNER MARKERS AND BENCHMARKS ARE IN PLACE AND ACCURATELY LOCATED. I HAVE FOUND THAT THE LOTS ARE BEING SURVEYED ACCORDING TO THE SUBDIVISION PLAT AND THAT THE LOTS ARE BEING SURVEYED ACCORDING TO THE SUBDIVISION PLAT.

SIGNED THIS 30th DAY OF MARCH 2000  
DALLAS K. BUTTARS  
SURVEYOR

**NOTE:**

AGRICULTURE IS THE PREFERRED USE IN THE AGRICULTURE ZONES. AGRICULTURE OPERATIONS AS SPECIFIED IN THE SUBDIVISION PLAT ARE PERMITTED AND SHALL BE SUBJECT TO ANY AND ALL AGRICULTURE USE REGULATIONS SUBJECT TO THE AGRICULTURE USE REGULATIONS. THE SUBDIVISION IS SUBJECT TO THE AGRICULTURE USE REGULATIONS.

**WEBER COUNTY ENGINEER**

I HEREBY CERTIFY THAT THE REQUIRED PUBLIC IMPROVEMENT WITH COUNTY STANDARDS AND THE AMOUNT OF THE FINANCIAL IMPROVEMENTS SUFFICIENT FOR THE INSTALLATION OF THESE IMPROVEMENTS.

SIGNED THIS 30th DAY OF MARCH 2000  
[Signature]

**WEBER COUNTY PLANNING COMMISSION APPROVAL**

THIS IS TO CERTIFY THAT THIS SUBDIVISION PLAT HAS BEEN REVIEWED BY THE WEBER COUNTY PLANNING COMMISSION AND IS IN ACCORDANCE WITH THE APPLICABLE LAWS AND RULES AND AFFECT APPLICABLE LAWS AND RULES.

SIGNED THIS 30th DAY OF MARCH 2000  
[Signature]

**WEBER COUNTY SURVEYOR**

I HEREBY CERTIFY THAT I HAVE INVESTIGATED THE LOTS OF THIS SUBDIVISION PLAT AND FOUND THEM TO BE ACCURATELY SURVEYED AND TO ACCURATELY REPRESENT THE LOTS AS DESCRIBED IN THE SUBDIVISION PLAT. I HAVE FOUND THAT THE CORNER MARKERS AND BENCHMARKS ARE IN PLACE AND ACCURATELY LOCATED. I HAVE FOUND THAT THE LOTS ARE BEING SURVEYED ACCORDING TO THE SUBDIVISION PLAT AND THAT THE LOTS ARE BEING SURVEYED ACCORDING TO THE SUBDIVISION PLAT.

SIGNED THIS 30th DAY OF MARCH 2000  
DALLAS K. BUTTARS  
SURVEYOR

**NOTE:**

AGRICULTURE IS THE PREFERRED USE IN THE AGRICULTURE ZONES. AGRICULTURE OPERATIONS AS SPECIFIED IN THE SUBDIVISION PLAT ARE PERMITTED AND SHALL BE SUBJECT TO ANY AND ALL AGRICULTURE USE REGULATIONS SUBJECT TO THE AGRICULTURE USE REGULATIONS. THE SUBDIVISION IS SUBJECT TO THE AGRICULTURE USE REGULATIONS.

**WEBER COUNTY RECORDER**

I HEREBY CERTIFY THAT THE ABOVE DESCRIBED LOTS HAVE BEEN RECORDED IN THE PUBLIC RECORDS OF THE COUNTY OF WEBER, UTAH.

FILED FOR RECORD & RECORDED  
THIS 30th DAY OF MARCH 2000  
AT [City] IN BOOK [Number] OF [Volume]

BY [Name] DEPUTY  
WEBER COUNTY RECORDER

002737

002737

002737

002737

002737

002737

002737