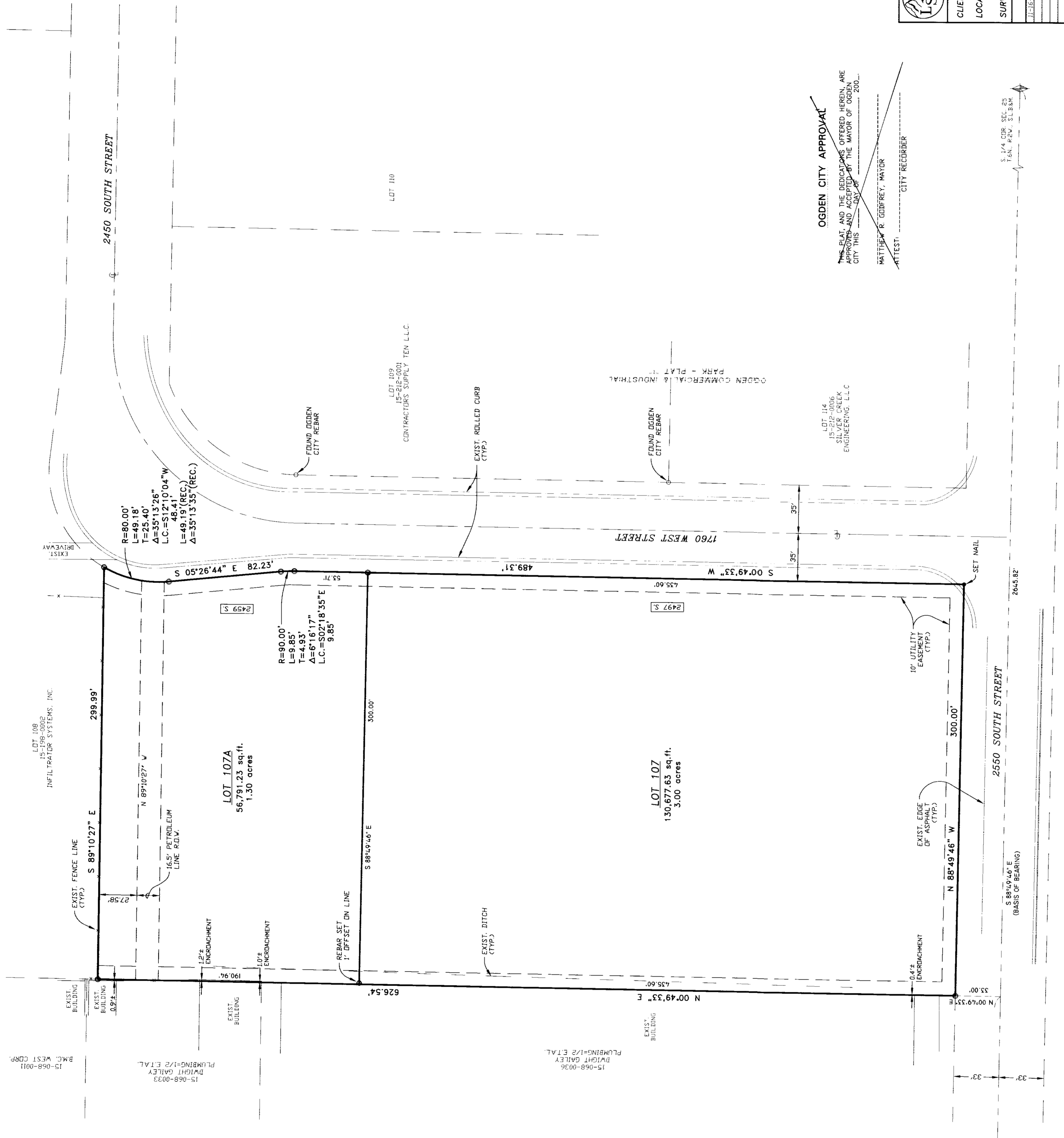


AMENDED LOT 107, OGDEN COMMERCIAL & INDUSTRIAL PARK - PLAT "H"

PART OF THE S.W. 1/4 OF SECTION 25, T.6N., R.2W., S.L.B. & M.

OGDEN CITY, WEBER COUNTY, UTAH

NOVEMBER 2000



SURVEYOR'S CERTIFICATE

I, MALCOLM K. BUTTARS, A REGISTERED LAND SURVEYOR IN THE STATE OF UTAH, HAVE BEEN EMPLOYED BY LANDMARK SURVEYING AND ENGINEERING, INC. TO SURVEY THE ABOVE DESCRIBED PLAT IN WEBER COUNTY, UTAH. I HAVE BEEN CAREFULLY EXAMINED THE RECORDS OF THE PUBLIC RECORDS OF THE COUNTY OF WEBER, UTAH, AND HAVE FOUND THE ABOVE DESCRIBED PLAT TO BE CORRECTLY FILED AND THE SURVEY TO BE ACCURATE. I HAVE ALSO BEEN ADVISED BY THE OGDEN CITY ENGINEERS OFFICE AND THE OGDEN CITY PLANNING DEPARTMENT THAT THE SURVEY HAS BEEN REVIEWED AND APPROVED FOR THE CITY OF OGDEN. I HAVE THEREFORE SIGNED THIS PLAT AS A SURVEYOR MADE ON THE GROUND.

SIGNED THIS 20th DAY OF OCTOBER, 2000.

MALCOLM K. BUTTARS

R.L.S. # 167594

OWNERS DEDICATION

WE, THE UNDERSIGNED DONORS OF THE HEREIN DESCRIBED TRACT OF LAND, DO HEREBY SET APART AND DEDICATE TO THE PUBLIC THE SAME INTO LOTS AND STREETS, ALONG WITH THE NECESSARY EASEMENTS AND UTILITIES, AND DO HEREBY AGREE TO CONVEY TO THE PUBLIC THE SAME BY THE CITY OF OGDEN, UTAH, BY THE CITY ENGINEERS OFFICE AND THE CITY PLANNING DEPARTMENT. THE TRACT OF LAND DESCRIBED AS STREETS, THE SAME TO BE USED AS PUBLIC STREETS AND EASEMENTS OVER, UPON AND UNDER THE SAME RESIDUALD ON THE PLAT AND THE SAME TO BE USED FOR THE PURPOSES OF THE CITY OF OGDEN, UTAH, AND THE PUBLIC UTILITIES. THE DONORS DO NOT RESERVE ANY RIGHTS OR INTERESTS IN THE PUBLIC UTILITIES LINES, SHOWING HEREON, EXCEPT AS TO THE PORTION WHICH IS RESERVED AS MAY BE AUTHORIZED BY THE CITY OF OGDEN, UTAH, AND THE PUBLIC UTILITIES. THE DONORS DO NOT RESERVE ANY RIGHTS OR INTERESTS IN THE PUBLIC UTILITIES LINES, SHOWING HEREON, EXCEPT AS TO THE PORTION WHICH IS RESERVED AS MAY BE AUTHORIZED BY THE CITY OF OGDEN, UTAH, AND THE PUBLIC UTILITIES.

SIGNED THIS 20th DAY OF OCTOBER, 2000.

ACKNOWLEDGMENT

STATE OF UTAH

COUNTY OF WEBER

BEFORE ME, THE UNDERSIGNED SOLELY PUBLIC, THE SIGNERS OF THE ABOVE PLAT, HAVE PERSONALLY APPEARED AND HAVE BEEN IDENTIFIED BY ME AS THE PERSONS WHOSE NAMES ARE SET FORTH AS DONORS OF THE PUBLIC UTILITIES AND VOLUNTARILY AND FOR THE PURPOSES THEREIN, ACKNOWLEDGED THE SIGNATURES OF THE SIGNERS OF THE ABOVE PLAT.

COMMISSIONER EXPIRES: _____

NOTARY PUBLIC

BOUNDARY DESCRIPTION

ALL OF LOT 107, OGDEN COMMERCIAL & INDUSTRIAL PARK - PLAT "H", OGDEN CITY, WEBER COUNTY, UTAH, ACCORDING TO THE OFFICIAL PLAT THEREOF.

NARRATIVE

THE PURPOSE OF THIS SURVEY WAS TO AMEND LOT 107, OGDEN COMMERCIAL & INDUSTRIAL PARK - PLAT "H", AS BEARING.

OGDEN CITY APPROVAL

THIS PLAT AND THE DEDICATION OFFERED HEREIN ARE APPROVED AND ACCEPTED BY THE MAYOR OF OGDEN CITY THIS 13th DAY OF OCTOBER, 2000.

MATTHEW R. GOODREY, MAYOR

ATTEST: _____ CITY RECORDER

OGDEN CITY ENGINEER

I HEREBY CERTIFY THAT I CAREFULLY INVESTIGATED THE LINES OF THE ABOVE DESCRIBED PLAT AND FOUND THEM TO BE CORRECTLY PLACED AND BEARING. I HAVE THEREFORE SIGNED THIS PLAT AS A SURVEYOR MADE ON THE GROUND.

SIGNED THIS 20th DAY OF OCTOBER, 2000.

OGDEN CITY ENGINEER

CITY ATTORNEY'S OFFICE

APPROVED BY THE CITY ATTORNEY'S OFFICE THIS 13th DAY OF OCTOBER, 2000.

CITY ATTORNEY

OGDEN CITY COMMUNITY AND ECONOMIC DEVELOPMENT DEPARTMENT

I HEREBY CERTIFY THAT THIS PLAT COMPLES WITH THE MINIMUM REQUIREMENTS OF THE SUBDIVISION ORDINANCE OF OGDEN CITY, UTAH, AND THAT THE PLAT HAS BEEN REVIEWED AND APPROVED BY THE OGDEN CITY PLANNING DEPARTMENT AND THE OGDEN CITY ENGINEERS OFFICE. I HAVE THEREFORE SIGNED THIS PLAT AS A SURVEYOR MADE ON THE GROUND.

SIGNED THIS 20th DAY OF OCTOBER, 2000.

MANAGER, CURRENT PLANNING DIVISION

SCALE: 1" = 40'

0 = 50' 0" 100' 150' 200' 250' 300'

OGDEN CITY ENGINEER

LANDMARK SURVEYING AND ENGINEERING, INC.
 464 S. 2500 W. #4-3, BOX UTAH 84007
 PHONE 801-731-4075

CLIENT: B.M.C. WEST BUILDING MATERIALS
 LOCATION: PART OF THE S.W. 1/4 OF SEC. 25, T.6N., R.2W., S.L.B.M.
 SURVEYED: SEP. 00

DRAWN BY: L.A.
 CHECKED BY: D.B.
 DATE: 10-20-00
 FILE: 1927FN04G

WEBER COUNTY RECORDER
 ENTRY # _____ FEE _____
 FILED FOR RECORD & RECORDED
 THIS ____ DAY OF _____ 20__
 AT _____ IN BOOK _____ OF _____
 PAGE _____
 BY _____ DEPUTY
 WEBER COUNTY RECORDER

RECEIVED
 OCT 13 2001
 Weber County Survey