

# LAZE DAZE SUBDIVISION

PART OF THE NORTHEAST QUARTER OF SECTION 22, T.7N., R.2W., S.L.B.&M., U.S. SURVEY  
WEBER COUNTY, UTAH  
JUNE, 2001

## Basis of Bearings

THE BASIS OF BEARINGS FOR THIS PLAT IS THE UTM COORDINATE SYSTEM (1987) NORTH ZONE AS DETERMINED LOCALLY BY THE LINE BETWEEN THE NORTH QUARTER CORNER AND THE NORTHEAST QUARTER CORNER OF SECTION 22, T.7N., R.2W., S.L.B.&M., U.S. SURVEY, SHOWN HEREON AS: S89°40'08" E.

## Narrative

THE PURPOSE OF THIS PLAT IS TO CREATE A THREE LOT SUBDIVISION OF THE GREEN AND CROSSLAND PROPERTIES FOR RICHARD LAZE AND ASSOCIATES, INC. (RLA) IN WEBER COUNTY, UTAH. THE CENTERLINE OF A DITCH, ALL OTHER LINES WERE DETERMINED BY LEED. ALL LOT CORNERS TO BE SET WITH A 5/8" REBAR AND CAP-MARKED "REEVE & ASSOCIATES".

## Boundary Description

PART OF THE NORTHEAST QUARTER OF SECTION 22, T.7N., R.2W., S.L.B.&M., U.S. SURVEY, DESCRIBED AS FOLLOWS:  
BEGINNING AT A POINT ON THE CENTERLINE OF A DITCH SAID POINT BEING 507'9.52" W 840.25' FEET FROM THE NORTH QUARTER CORNER OF SAID SECTION 22; THENCE S01°46'35" W ALONG SAID CENTERLINE 332.03' FEET; THENCE S89°02'28" E 1323.11' FEET TO THE WEST QUARTER CORNER OF SAID SECTION 22; THENCE N00°15'11" W 51.28' FEET; THENCE N89°02'28" W 1311.62' FEET TO THE POINT OF BEGINNING.  
CONTAINS: 10.04 ACRES

## Legend

- SECTION CORNER
- EXISTING FENCE
- CENTERLINE OF EXISTING DITCH
- EXISTING BUILDING
- PRIVATE ROAD EASEMENT

NORTH QUARTER CORNER OF SECTION 22, T.7N., R.2W., S.L.B.&M., U.S. SURVEY, FOUND WEBER COUNTY MONUMENT "J" BRASS CAP SET IN CONCRETE 4' ABOVE GROUND IN 1963.

## A-1 ZONE NOTE:

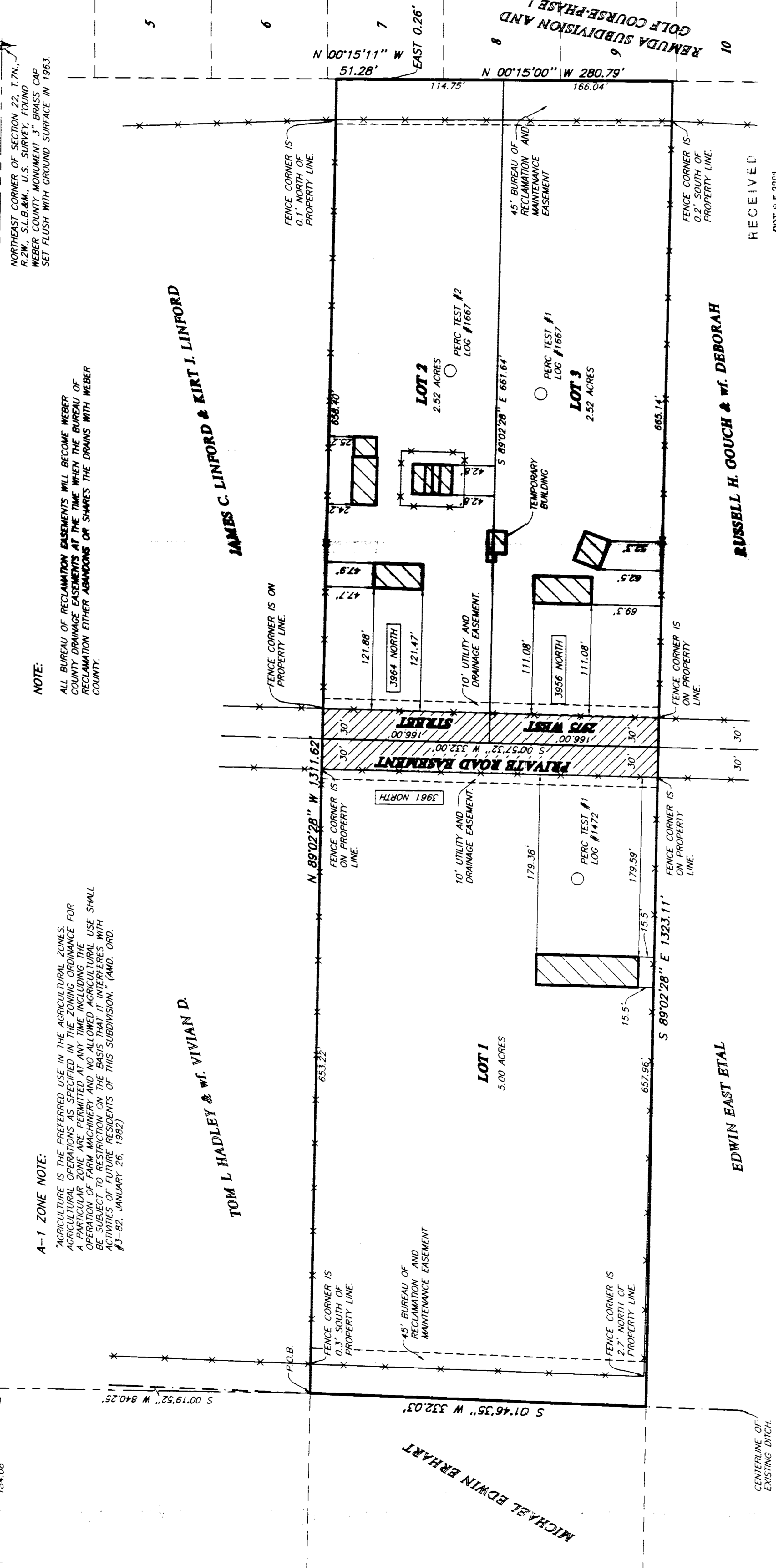
AGRICULTURE IS THE PREFERRED USE IN THE AGRICULTURAL ZONES. AGRICULTURAL OPERATIONS AS SPECIFIED IN THE ZONING ORDINANCE FOR OPERATION OF FARM MACHINERY AND NO ALLOWED AGRICULTURAL USE SHALL BE SUBJECT TO RESTRICTION ON THE BASIS THAT IT INTERFERES WITH THE AGRICULTURAL OPERATIONS OF THIS SUBDIVISION. (AMD. ORD. #1-82, JANUARY 26, 1982)

## NOTE:

ALL BUREAU OF RECLAMATION EASEMENTS WILL BECOME WEBER COUNTY DRAINAGE EASEMENTS AT THE TIME WHEN THE BUREAU OF RECLAMATION EITHER ABANDONS OR SHARES THE DRAINS WITH WEBER COUNTY.

NORTHEAST CORNER OF SECTION 22, T.7N., R.2W., S.L.B.&M., U.S. SURVEY, FOUND WEBER COUNTY MONUMENT "J" BRASS CAP SET FLUSH WITH GROUND SURFACE IN 1963.

S 89°40'08" E (BASIS OF BEARINGS) 2592.75' (MEASURED) 2002.70' (RECORD)



## WEBER COUNTY PLANNING COMMISSION APPROVAL

THIS IS TO CERTIFY THAT THIS SUBDIVISION PLAT WAS DAILY APPROVED BY THE WEBER COUNTY PLANNING COMMISSION.

SIGNED THIS 26th DAY OF JUNE, 2001.  
CHARMAY WEBER COUNTY PLANNING COMMISSION

## WEBER COUNTY ENGINEER

I HEREBY CERTIFY THAT THE REQUIRED PUBLIC IMPROVEMENT STANDARDS AND PERMITS FOR THIS SUBDIVISION COMPLY WITH THE COUNTY STANDARDS AND THE AMOUNT OF THE FINANCIAL GUARANTEE IS SUFFICIENT FOR THE INSTALLATION OF THESE IMPROVEMENTS.

SIGNED THIS 26th DAY OF JUNE, 2001.  
Curtis A. Brice, Engineer

## WEBER COUNTY COMMONS ACCEPTANCE

THIS IS TO CERTIFY THAT THIS SUBDIVISION PLAT, THE LOCATION OF STREETS AND OTHER PUBLIC WORKS AND FINANCIAL GUARANTEE OF PUBLIC IMPROVEMENTS ASSOCIATED WITH THIS SUBDIVISION, THEREBY APPROVED AND ACCEPTED BY THE COMMISSIONERS OF WEBER COUNTY, UTAH.

SIGNED THIS 26th DAY OF JUNE, 2001.  
STEWART WEBER COUNTY COMMISSION

## WEBER COUNTY SURVEYOR

I HEREBY CERTIFY THAT THE SURVEYOR'S OFFICE HAS REVIEWED THIS PLAT FOR MATHEMATICAL ACCURACY AND THAT THE SUBDIVISION WITH LINES AND ANGLE MEASUREMENTS IS CORRECT. THE APPROVAL OF THIS PLAT BY THE WEBER COUNTY SURVEYOR DOES NOT RELIEVE THE LICENSEE AND/OR LICENSEES ASSOCIATED WITH THIS PLAT FROM THE REQUIREMENTS AND/OR LIABILITIES ASSOCIATED THEREWITH.

SIGNED THIS 26th DAY OF JUNE, 2001.  
WEBER COUNTY SURVEYOR

## WEBER COUNTY ATTORNEY

I HAVE EXAMINED THE FINANCIAL GUARANTEE AND OTHER DOCUMENTS ASSOCIATED WITH THIS SUBDIVISION AND HAVE BEEN SATISFIED BY THE OFFICE OF THE WEBER COUNTY ENGINEER THAT THE FINANCIAL GUARANTEE IS SUFFICIENT FOR ON-SITE WATERWATER DISPOSAL SYSTEMS.

SIGNED THIS 26th DAY OF JUNE, 2001.  
DIRECTOR, WEBER-MORGAN HEALTH DEPARTMENT

## WEBER-MORGAN HEALTH DEPARTMENT

I HEREBY CERTIFY THAT THE SOILS, PERCOLATION TEST RESULTS AND OTHER DATA COMPILED FROM RECORDS IN SAID SUBDIVISION, AND RECORDS OF THE WEBER COUNTY ENGINEER, ARE IN ACCORDANCE WITH THE APPLICABLE STATUTES AND ORDINANCES OF WEBER COUNTY CONCERNING SURVEY REQUIREMENTS REGARDING LOT MEASUREMENTS AND DEVELOPMENT STANDARDS FOR THE ZONE IN WHICH THE SITE IS LOCATED.

SIGNED THIS 26th DAY OF JUNE, 2001.  
DIRECTOR, WEBER-MORGAN HEALTH DEPARTMENT

## WEBER COUNTY RECORDER

ENTRY NO. 1542122 P.M. 6:30 P.M. FILED FOR RECORD AND RECORDED IN BOOK 514 OF THE OFFICIAL RECORDS, PAGE 123.

SIGNED THIS 26th DAY OF JUNE, 2001.  
WEBER COUNTY RECORDER

## SURVEYOR'S CERTIFICATE

I, RUSSELL J. WILFORD, A REGISTERED PROFESSIONAL SURVEYOR IN THE STATE OF UTAH, HAVE BEEN DULY QUALIFIED TO CONDUCT THIS SURVEY IN WEBER COUNTY, UTAH, THIS BEING A SUBDIVISION OF THE NORTHEAST QUARTER OF SECTION 22, T.7N., R.2W., S.L.B.&M., U.S. SURVEY, AND THE RECORDS OF THE WEBER COUNTY ENGINEER, ARE IN ACCORDANCE WITH THE APPLICABLE STATUTES AND ORDINANCES OF WEBER COUNTY CONCERNING SURVEY REQUIREMENTS REGARDING LOT MEASUREMENTS AND DEVELOPMENT STANDARDS FOR THE ZONE IN WHICH THE SITE IS LOCATED.

SIGNED THIS 26th DAY OF JUNE, 2001.  
159437  
UTAH LICENSE NUMBER

Richard J. Wilford  
Notary Public

## OWNERS DEDICATION AND CERTIFICATION

WE, THE UNDERSIGNED OWNERS OF THE HEREIN DESCRIBED TRACT OF LAND, DO HEREBY SET APART AND SUBDIVIDE THE SAME INTO LOTS AND STREETS AS SHOWN ON THIS PLAT, IN ACCORDANCE WITH THE UTAH DEDICATION ACT, UTAH CODE ANN. § 17-2-101, AND DO HEREBY DEDICATE, GRANT AND CONVEY TO WEBER COUNTY, UTAH, ALL RIGHTS AND EASEMENTS OVER, UPON AND UNDER SAID LANDS, INCLUDING BUT NOT LIMITED TO, THE RIGHT OF RECLAMATION, DRAINAGE, IRRIGATION, MAINTENANCE, EASEMENTS, BENEFIT OF RECLAMATION EASEMENTS AND CANAL MAINTENANCE, AND THE RIGHT OF PUBLIC UTILITY SERVICE, AND WE HEREBY CERTIFY THAT WE HAVE BEEN ADVISED BY THE NATIONAL STATE ENGINEER'S SOCIETY OF THE APPLICABLE DEVELOPMENT STANDARDS FOR THE ZONE IN WHICH THE SITE IS LOCATED.

SIGNED THIS 26th DAY OF JUNE, 2001.  
Richard J. Wilford  
Notary Public

## ACKNOWLEDGMENT

STATE OF UTAH

ON THE 26th DAY OF JUNE, 2001, PERSONALLY APPEARED BEFORE ME, THE UNDERSIGNED NOTARY PUBLIC, JAMES C. LINFORD AND KIRT J. LINFORD, WHO BEING BY ME DULY SWORN, DID ACKNOWLEDGE TO ME THAT THEY SIGNED THE ABOVE INSTRUMENT VOLUNTARILY, AND FOR THE PURPOSES THEREIN MENTIONED.

SIGNED THIS 26th DAY OF JUNE, 2001.  
James C. Linford  
Notary Public

## ACKNOWLEDGMENT

STATE OF UTAH

ON THE 26th DAY OF JUNE, 2001, PERSONALLY APPEARED BEFORE ME, THE UNDERSIGNED NOTARY PUBLIC, RUSSELL H. GOUCH AND WIFE DEBORAH, WHO BEING BY ME DULY SWORN, DID ACKNOWLEDGE TO ME THAT THEY SIGNED THE ABOVE INSTRUMENT VOLUNTARILY, AND FOR THE PURPOSES THEREIN MENTIONED.

SIGNED THIS 26th DAY OF JUNE, 2001.  
Russell H. Gouch & Wf. Deborah  
Notary Public

## REEVE & ASSOCIATES, INC.

Surveying & Land Planning & Landscape Architecture  
3670 QUINCY AVE. STE. #1  
OSHER, UTAH 84043  
(801) 627-3300 FAX (801) 627-2464 (435) 752-3803 FAX (435) 752-2244

DATE: 11-24-99  
SCALE: 1"=40'  
REVISION:  
DRAWN BY: R. WILFORD  
CHECKED BY: M.E. DOCKE

WEBER COUNTY RECORDER  
ENTRY NO. 1542122 P.M. 6:30 P.M. FILED FOR RECORD AND RECORDED IN BOOK 514 OF THE OFFICIAL RECORDS, PAGE 123.

WEBER-MORGAN HEALTH DEPARTMENT  
I HEREBY CERTIFY THAT THE SOILS, PERCOLATION TEST RESULTS AND OTHER DATA COMPILED FROM RECORDS IN SAID SUBDIVISION, AND RECORDS OF THE WEBER COUNTY ENGINEER, ARE IN ACCORDANCE WITH THE APPLICABLE STATUTES AND ORDINANCES OF WEBER COUNTY CONCERNING SURVEY REQUIREMENTS REGARDING LOT MEASUREMENTS AND DEVELOPMENT STANDARDS FOR THE ZONE IN WHICH THE SITE IS LOCATED.

SIGNED THIS 26th DAY OF JUNE, 2001.  
DIRECTOR, WEBER-MORGAN HEALTH DEPARTMENT