



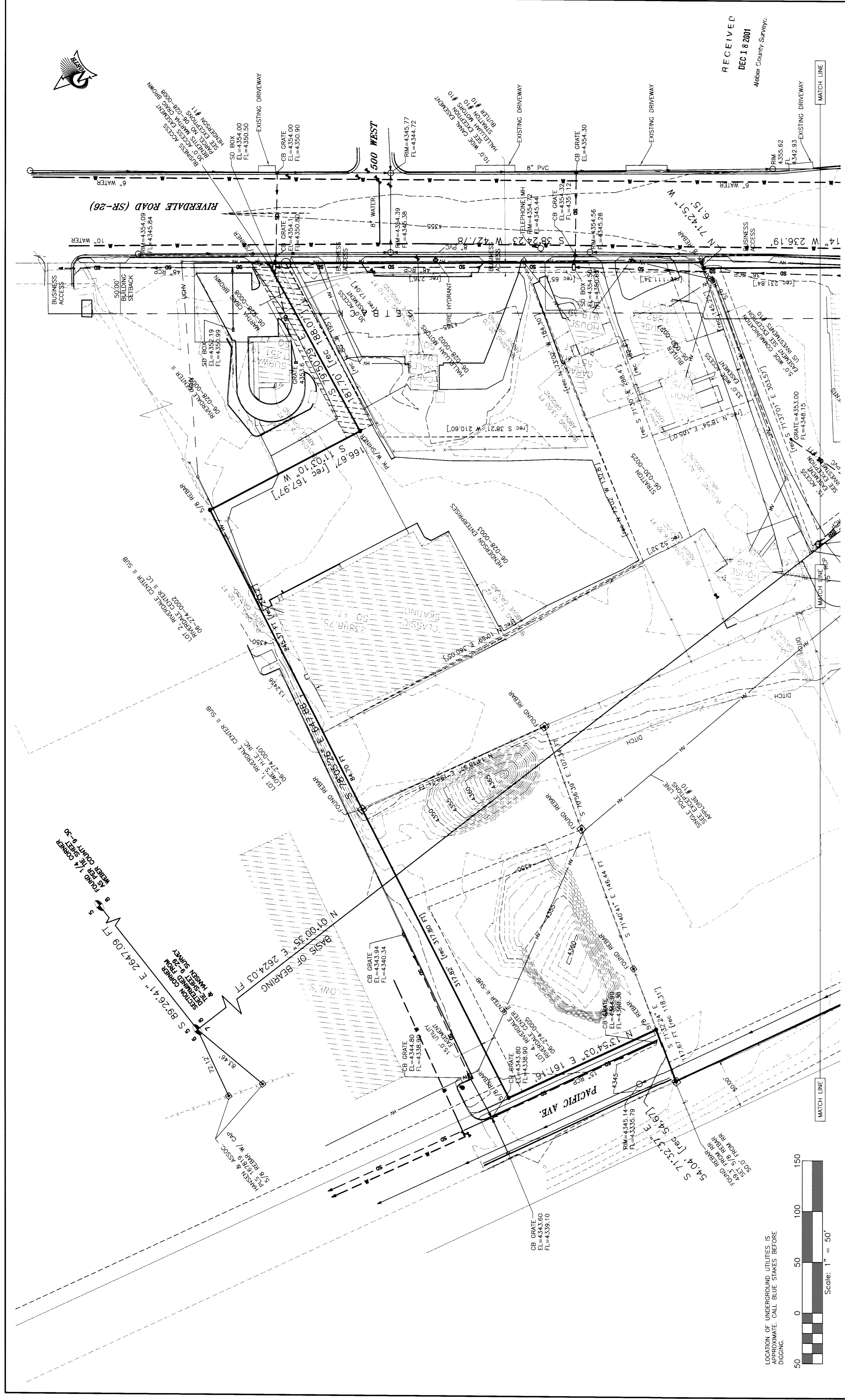


3 of 4

02806

02806

3 of 4



RECEIVED  
DEC 18 2001  
Mober County Survey

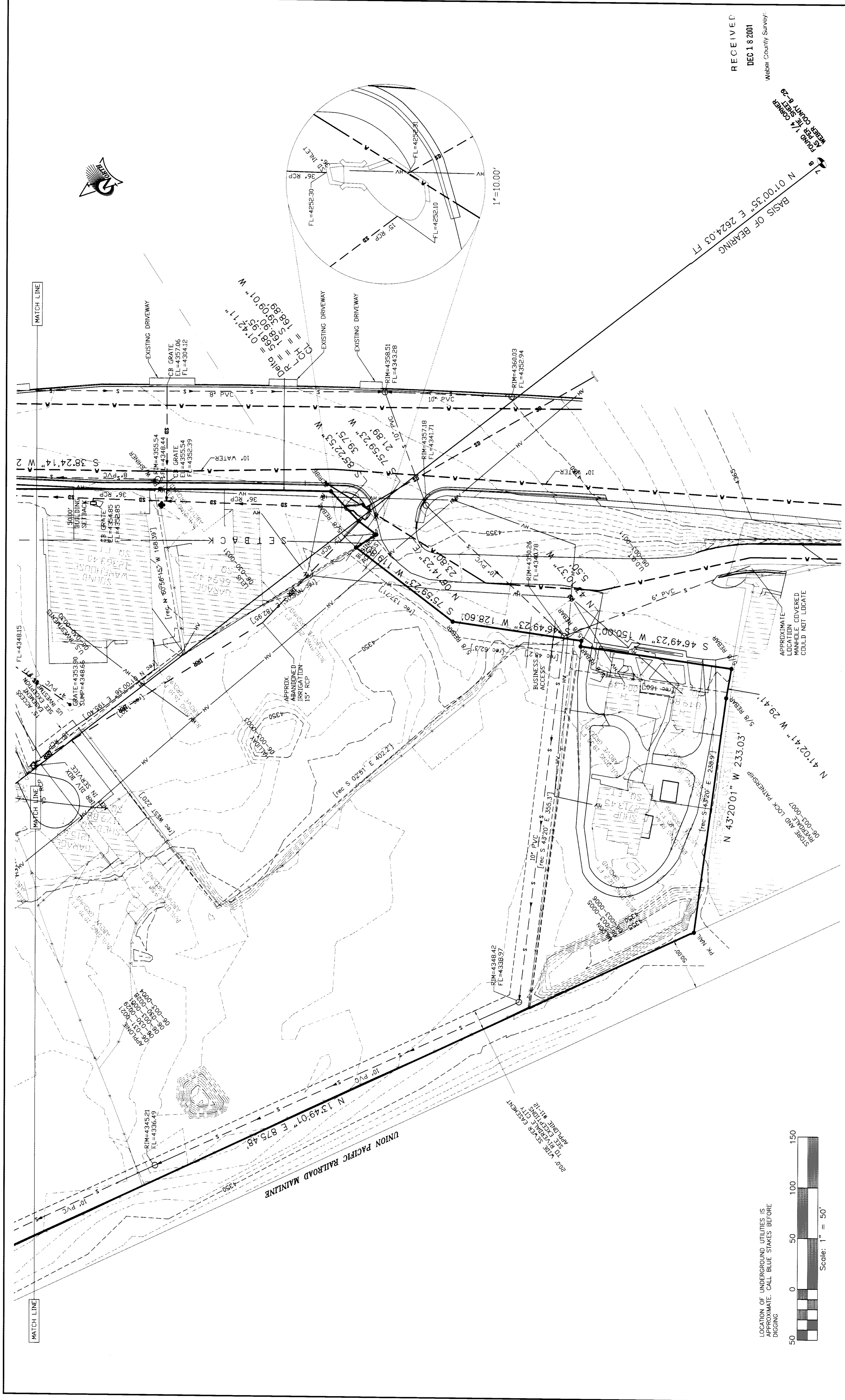
PROJECT NO. S9674.04		DATE 12/15/00		SHEET NO. 3 OF 4	
DESIGNED BY JHW	CHECKED BY JHW	DRAWN BY JHW	DATE 12/15/00	PROJECT NO. S9674.04	SHEET NO. 3 OF 4
<p><b>SUNRISE ENGINEERING, INC.</b> CONSULTING ENGINEERS &amp; LAND SURVEYORS 12227 South Business Park Drive, Suite 220 Draper, Utah 84020 TEL (801) 523-0100 FAX (801) 523-0990</p>					
<p><b>SUNRISE ENGINEERING, INC.</b> DALE J. KANISON REGISTERED PROFESSIONAL SURVEYOR No. 18949</p>					
<p>ALTA/ACSM LAND TITLE SURVEY for <b>COSTCO WHOLESALE - RIVERDALE ROAD, RIVERDALE, UT</b> NE QUARTER OF SECTION 7 AND NW QUARTER OF SECTION 8, T5N, R1W, S14M</p>					

4 of 4  
02804

90820

002804

4 of 4  
02804



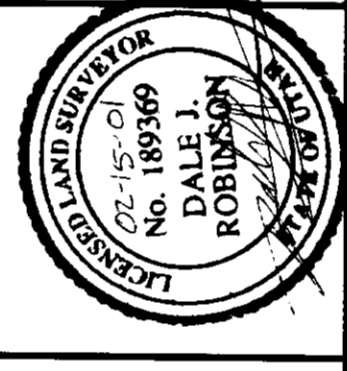
RECEIVED  
DEC 18 2001  
Weber County Survey

TRIM V.I. CORNER  
WEBER COUNTY #28  
BASIS OF BEARING  
N 01°00'35\" E 2624.05 FT  
1\"=10.00'

PROJECT NO.	SS0674.04
DRAWN BY	DJR
CHECKED BY	JHW
DATE	12/15/00
DRAWING NO.	00-032
SHEET NO.	1 OF 4

**ALTA/ACSM LAND TITLE SURVEY for  
COSTCO WHOLESALE - RIVERDALE ROAD, RIVERDALE, UT**

NE QUARTER OF SECTION 7 AND NW QUARTER OF SECTION 8, T5N, R1W, S14M

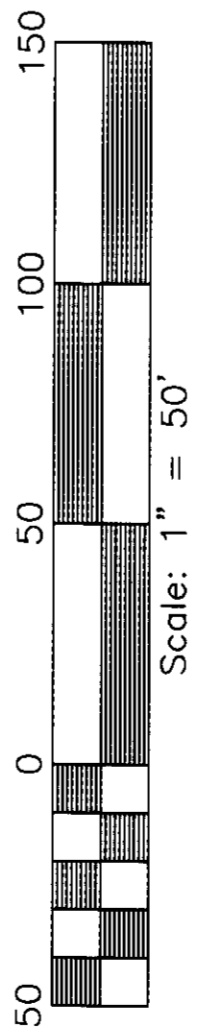


**SUNRISE ENGINEERING, INC.**

CONSULTING ENGINEERS & LAND SURVEYORS  
12227 South Business Park Drive, Suite 220  
Draper, Utah 84020  
TEL (801) 523-0100  
FAX (801) 523-0990

NO.	DATE	DESCRIPTION
1	12/15/00	ISSUED FOR PERMITS
2	12/15/00	REVISED PER COMMENTS
3	12/15/00	REVISED PER COMMENTS
4	12/15/00	REVISED PER COMMENTS
5	12/15/00	REVISED PER COMMENTS
6	12/15/00	REVISED PER COMMENTS
7	12/15/00	REVISED PER COMMENTS

LOCATION OF UNDERGROUND UTILITIES IS  
APPROXIMATE. CALL BLUE STAKES BEFORE  
DIGGING



MATCH LINE

MATCH LINE

02804