





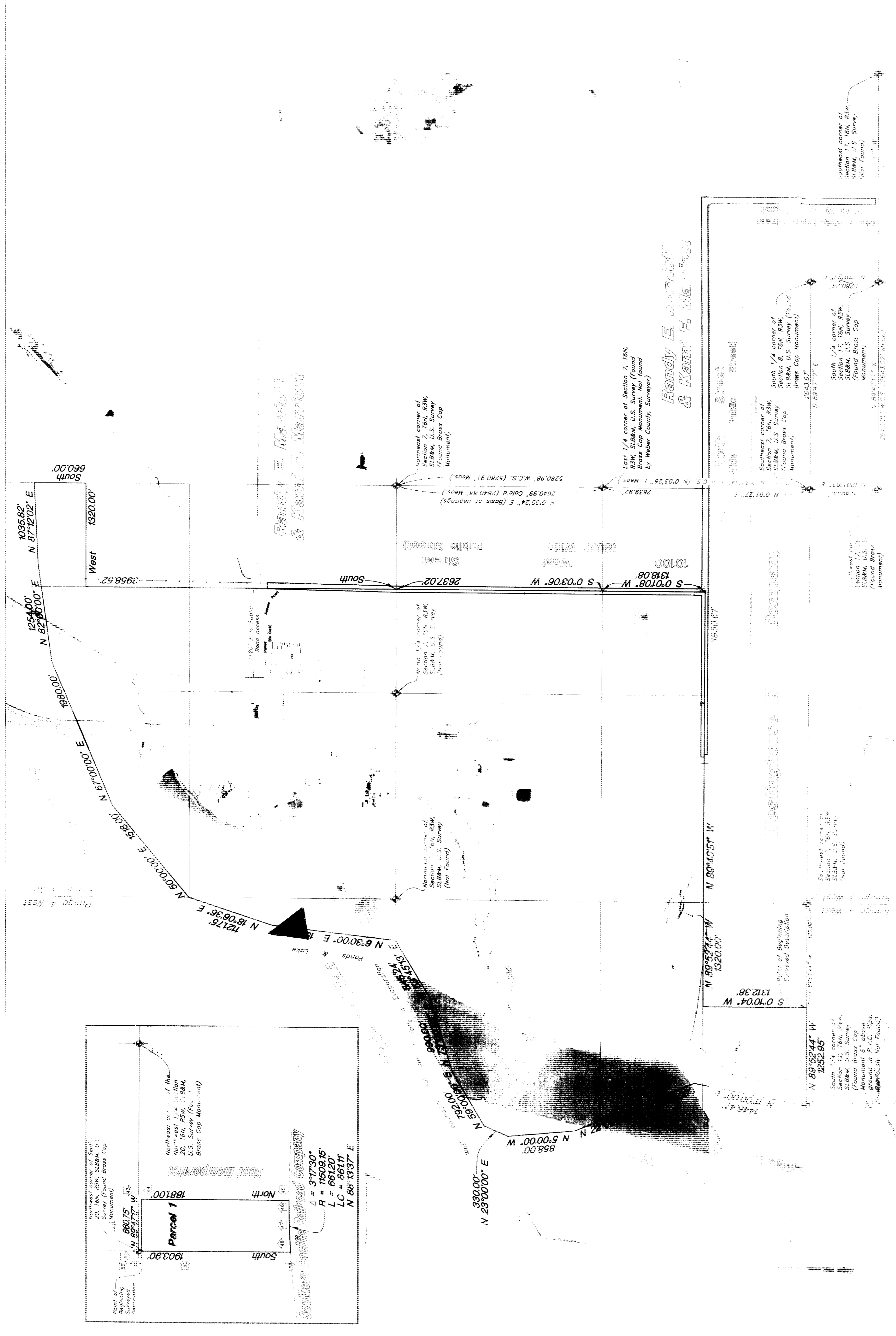


4 of 14

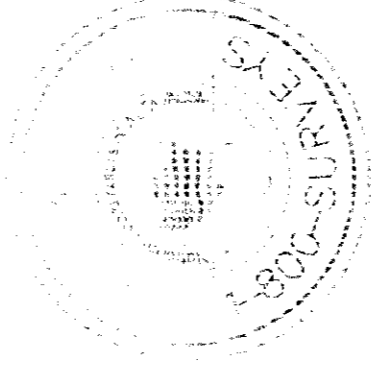
02810

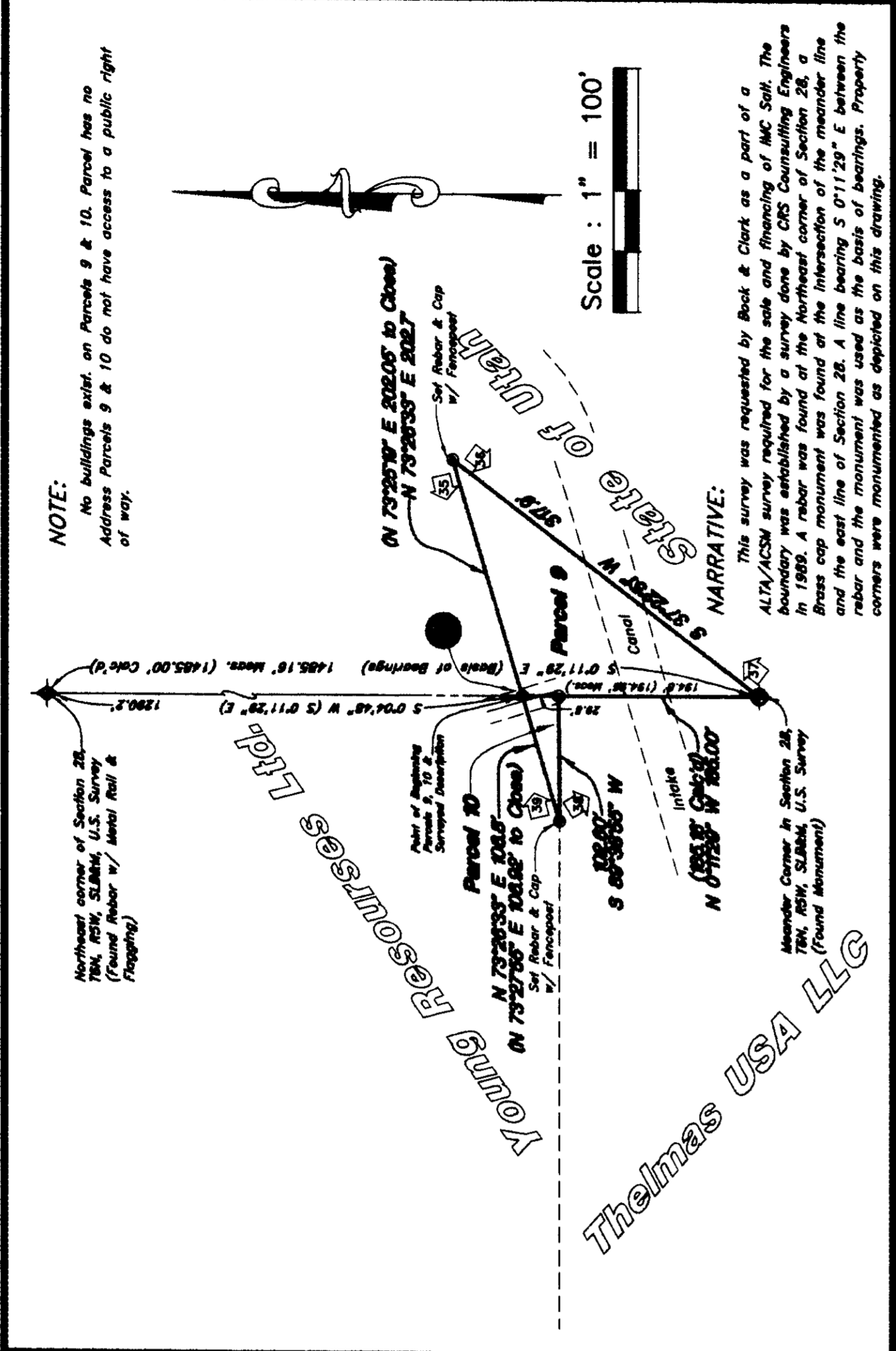
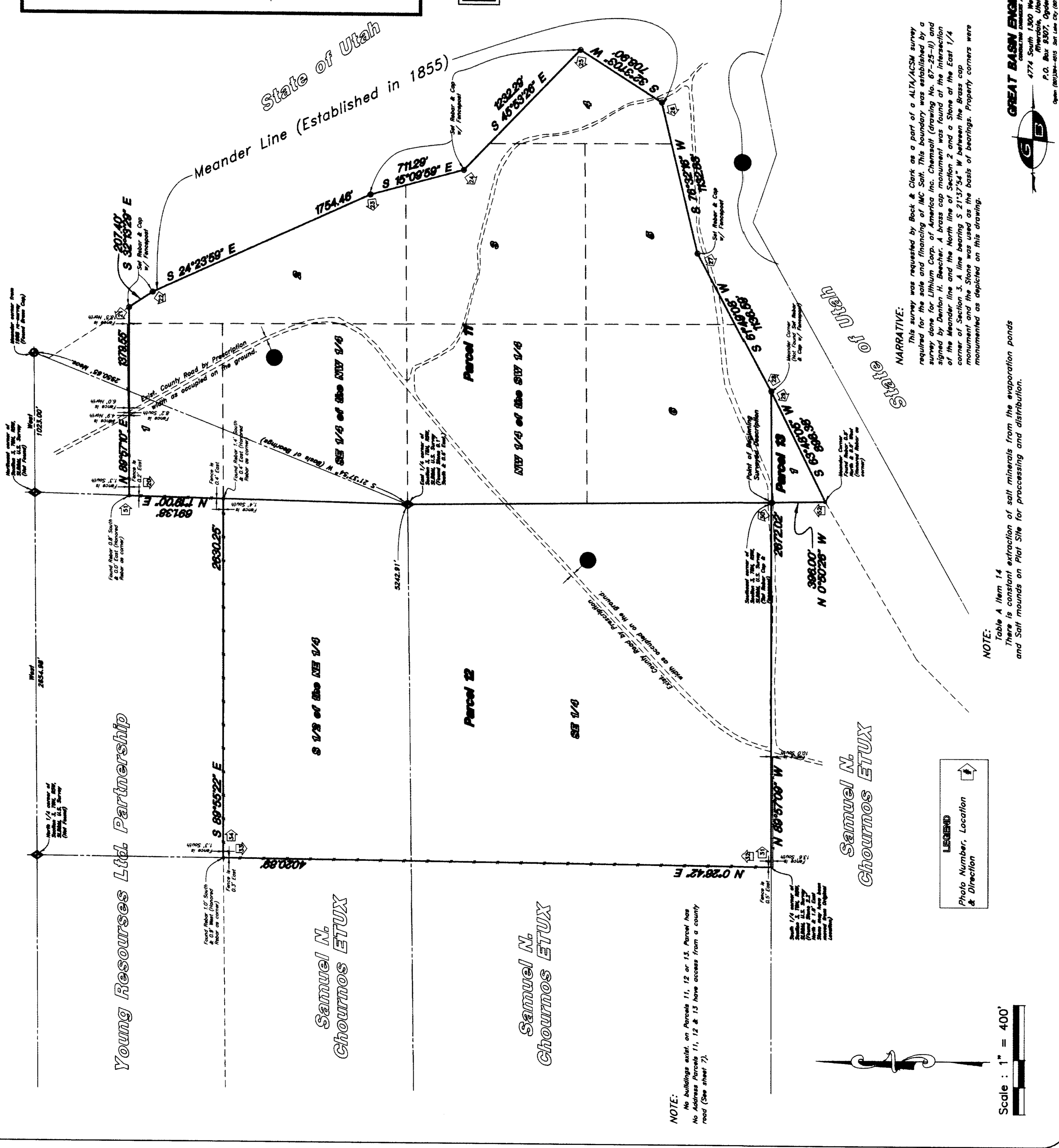
02228

4 of 14



Book & Clark's National Surveyors Network  
National Coordinators of A/T/A/CSM Land Title Surveys





**NOTE:**  
No buildings exist on Parcels 12, 13, 14, Parcel 15, or Parcel 16. No buildings exist on Parcels 17, 18, 19, 20, 21, 22, 23, 24, 25, 26, 27, 28, 29, 30, 31, 32, 33, 34, 35, 36, 37, 38, 39, 40, 41, 42, 43, 44, 45, 46, 47, 48, 49, 50, 51, 52, 53, 54, 55, 56, 57, 58, 59, 60, 61, 62, 63, 64, 65, 66, 67, 68, 69, 70, 71, 72, 73, 74, 75, 76, 77, 78, 79, 80, 81, 82, 83, 84, 85, 86, 87, 88, 89, 90, 91, 92, 93, 94, 95, 96, 97, 98, 99, 100.

**Thelmas USA LLC**

**NOTE:**  
No buildings exist on Parcels 11, 12 or 13. Parcel 14 is a vacant lot. No buildings exist on Parcels 15, 16 & 17. No buildings exist on Parcels 18, 19, 20, 21, 22, 23, 24, 25, 26, 27, 28, 29, 30, 31, 32, 33, 34, 35, 36, 37, 38, 39, 40, 41, 42, 43, 44, 45, 46, 47, 48, 49, 50, 51, 52, 53, 54, 55, 56, 57, 58, 59, 60, 61, 62, 63, 64, 65, 66, 67, 68, 69, 70, 71, 72, 73, 74, 75, 76, 77, 78, 79, 80, 81, 82, 83, 84, 85, 86, 87, 88, 89, 90, 91, 92, 93, 94, 95, 96, 97, 98, 99, 100.

**NARRATIVE:**  
This survey was requested by Samuel N. Choumos ETUX. The survey was conducted by Great Basin Engineering North, Inc. The survey was conducted on the 14th day of November, 2001. The survey was conducted by Daniel H. Becher. A brass cap monument was found at the intersection of the Meander line and the North line of Section 2 and a Stone at the East 1/4 of Section 12. The survey was conducted on the basis of bearings. Property corners were monumented as depicted on this drawing.

**NOTE:**  
Table 1, Item 14 extraction of salt minerals from the evaporation ponds and Salt mounds on Plot Site for processing and distribution.

Scale : 1" = 400'

**LEGEND**  
Photo Number, Location & Direction

RECEIVED  
DEC 18 2001  
Mason County Survey

02810

**Book & Clark's National Surveyors Network**  
537 North Cleveland-Harrison Road  
Cincinnati, Ohio 45333  
Phone: (800) Surveys, Fax: (330) 666-3698  
www.1800surveys.com



**ALTA/ACSM LAND TITLE SURVEY**  
PREPARED FOR:  
**IMC SALT**  
DATE: November 21, 2001  
PROJECT NO. 200102810/2

Sheet 5 of 14

**GREAT BASIN ENGINEERING NORTH**  
4774 South 1300 West - Suite 102  
P.O. Box 83007, Denver, CO 80281  
P.O. Box 44409, Salt Lake City, UT 84144  
Phone: (801) 488-8888, Fax: (801) 488-2944

Scale : 1" = 400'

002810

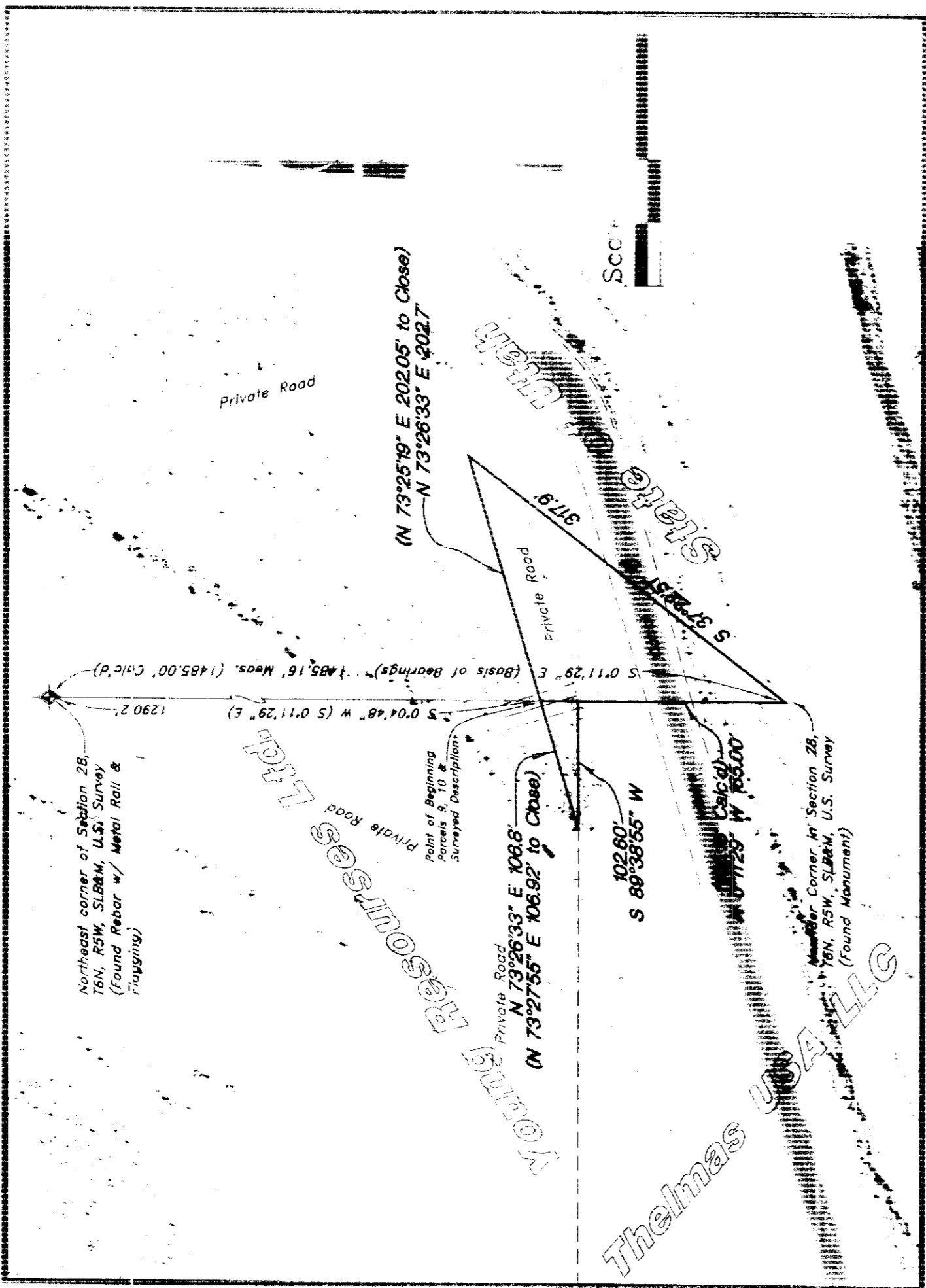
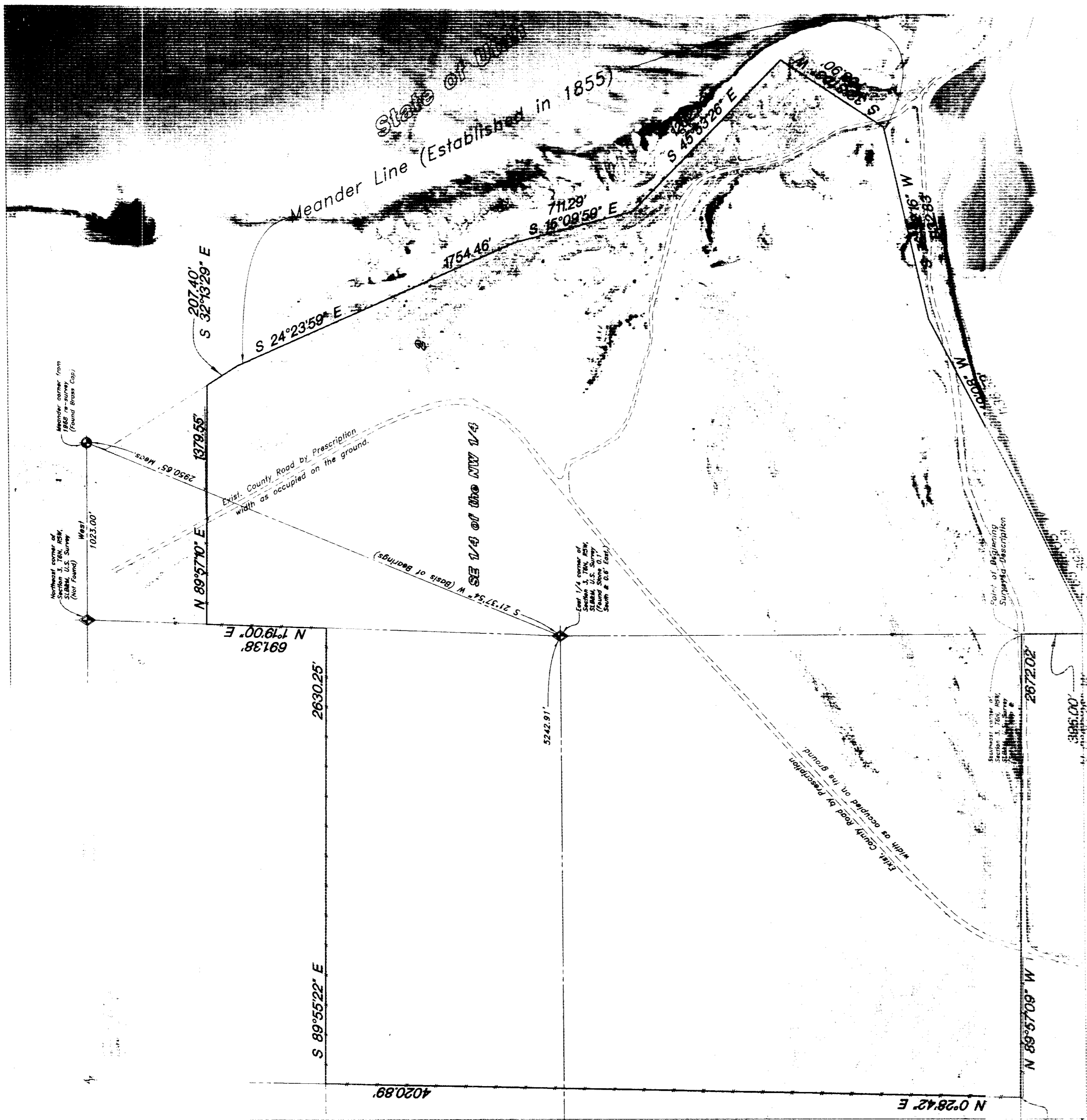
6 of 14

002510

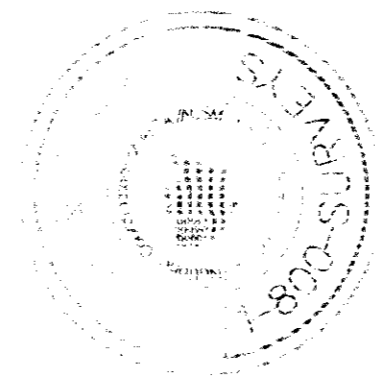
002810

002310

6 of 14



Book & Clark's National Surveyors Network  
 National Coordinators of AIA/ACSM Land Title Surveys



Book & Clark's National Surveyors Network  
 National Coordinators of AIA/ACSM Land Title Surveys

7 of 14

02810

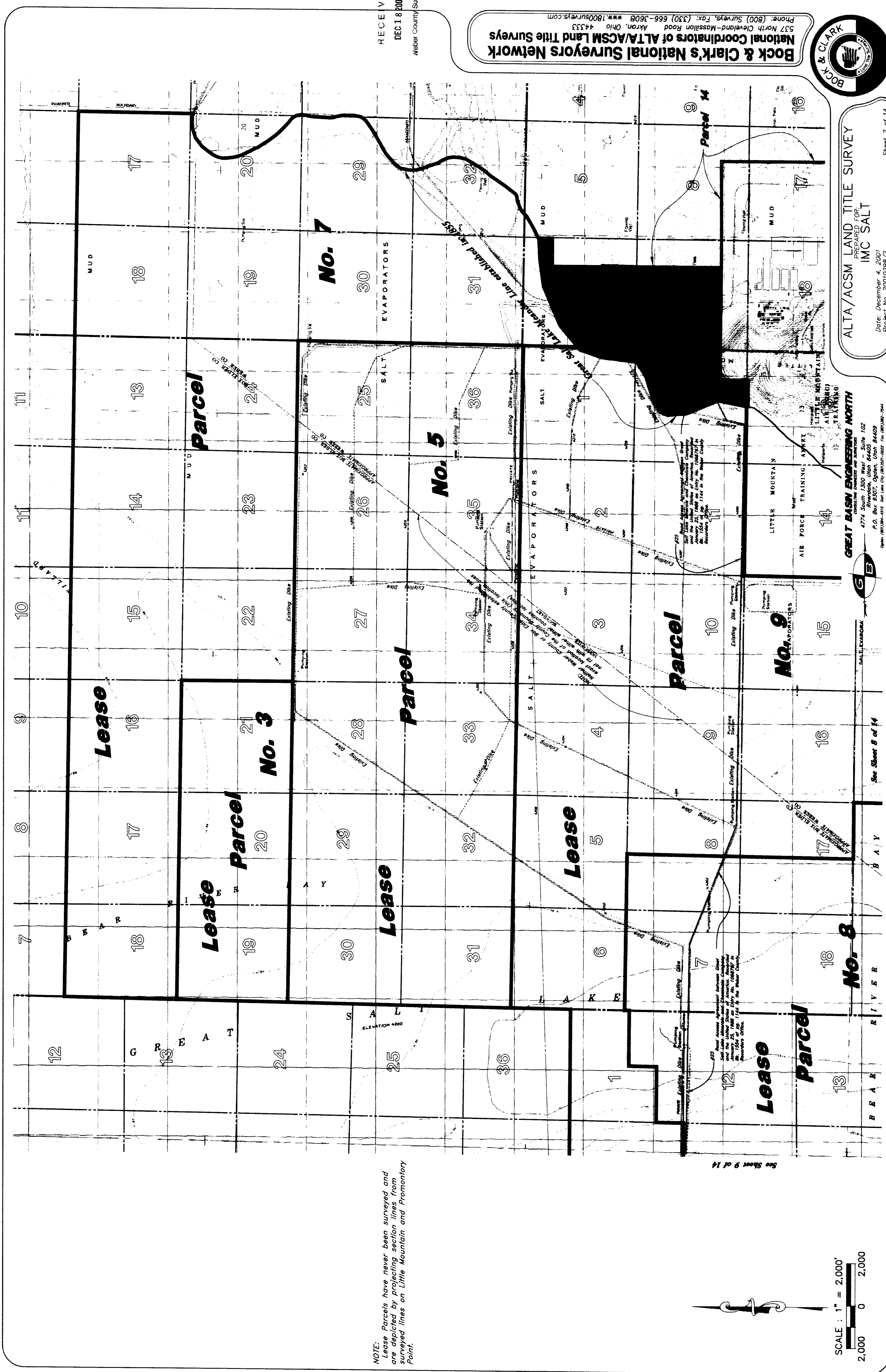
02810

02810

02810

7 of 14

W:\10131616\10131616.dwg, 12/04/2001 04:53:53 PM, A1



NOTE:  
 Lease Parcels have never been surveyed and  
 are depicted by projecting section lines from  
 surveyed lines on Little Mountain and Promontory  
 Point.



SCALE : 1" = 2,000'  
 2,000 0 2,000

RECEIVED  
 DEC 18 2001  
 Noble County Surveyor

**Bock & Clark's National Surveyors Network**  
 National Coordinators of ALTA/ACSM Land Title Surveys  
 Phone: (800) Surveys, Fax: (330) 666-3608  
 537 North Cleveland-Mission Road Akron, OH 44333  
 www.1800surveys.com



ALTA/ACSM LAND TITLE SURVEY  
 PREPARED FOR:  
 IMC SALT  
 Date: December 4, 2001  
 Project No. 200102952/2

**GREAT BASIN ENGINEERING NORTH**  
 CONSULTING ENGINEERS AND SURVEYORS  
 4774 South 1320 West, Suite 102  
 P.O. Box 9307, Ogden, Utah 84409  
 Open 9:00am-5:00pm, but call us to schedule a visit for service.

Sheet 7 of 14

See Sheet 8 of 14

See Sheet 9 of 14



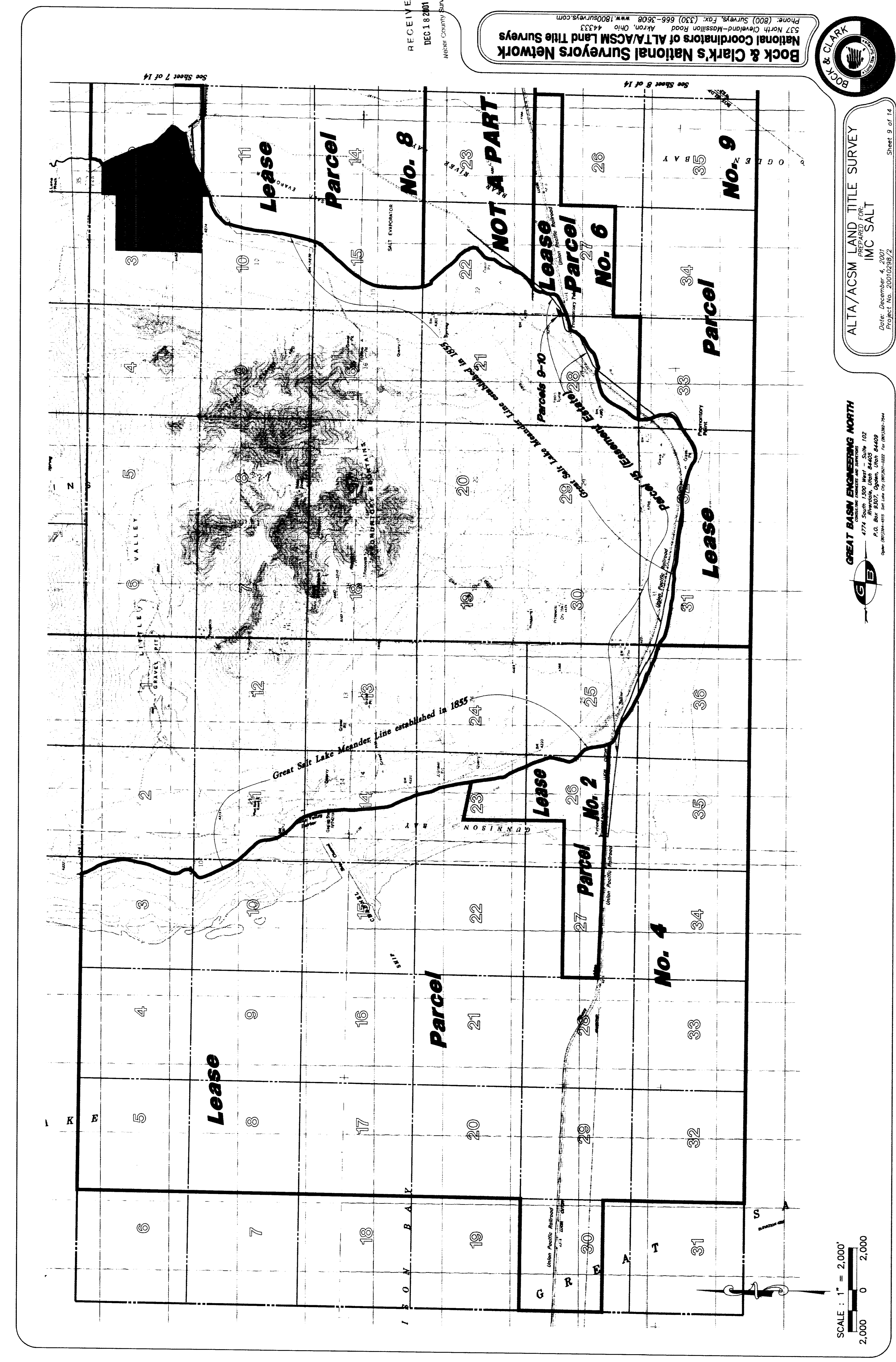


9 of 14

9 of 14

02810

02810



See Sheet 7 of 14

See Sheet 8 of 14

RECEIVED  
 DEC 18 2001  
 Meeker County Surveyor

**Bock & Clark's National Surveyors Network**  
 National Coordinators of ALTA/ACSM Land Title Surveys  
 Phone: (800) Surveys, Fax: (330) 666-3608  
 537 North Cleveland-Mossillon Road Akron, Ohio 44333  
 www.1800surveys.com



ALTA/ACSM LAND TITLE SURVEY  
 PREPARED FOR:  
 IMC SALT  
 Date: December 4, 2001  
 Project No. 20010289/2  
 Sheet 9 of 14

**GREAT BASIN ENGINEERING NORTH**  
 CONSULTING ENGINEERS AND SURVEYORS  
 4774 W. 112th St., Suite 102  
 P.O. Box 9307, Ogden, Utah 84409  
 Open to the public for review only. For details, see the project manual.

SCALE: 1" = 2,000'  
 2,000 0 2,000

02810

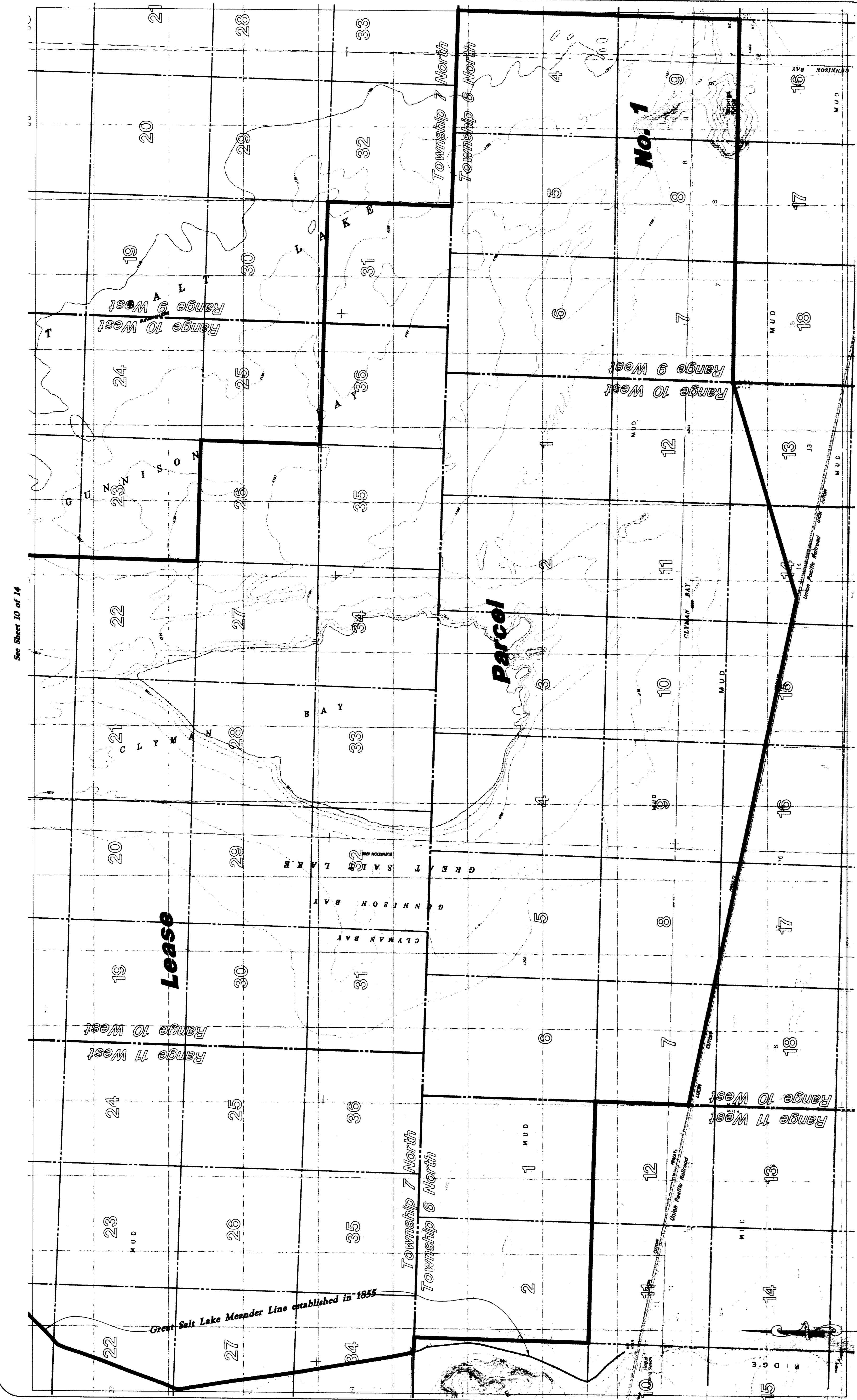
02810

02810

02810

W:\101310\101310.dwg, 12/04/2001 04:07:59 PM, AH





See Sheet 10 of 14

Lease

Parcel

No. 1

SCALE : 1" = 2,000'  
 2,000 0 2,000

**GREAT BASIN ENGINEERING NORTH**  
 CONSULTING ENGINEERS AND SURVEYORS  
 4774 S. WILSON BLVD. SUITE 102  
 P.O. BOX 3307, OGDEN, UTAH 84409  
 UTAH PROFESSIONAL ENGINEER LICENSE NO. 12444  
 UTAH PROFESSIONAL SURVEYOR LICENSE NO. 12444

**ALTA/ACSM LAND TITLE SURVEY**  
 PREPARED FOR:  
**IMC SALT**  
 Date: December 4, 2001  
 Project No. 20010298/2



**Bock & Clark's National Surveyors Network**  
 National Coordinators of ALTA/ACSM Land Title Surveys  
 537 North Cleveland-Mission Road Akron, OH 44333  
 Phone: (800) Surveys, Fax: (330) 666-3608, WWW: 1800surveys.com

RECEIVED  
 DEC 18 2001  
 ALTA/ACSM Land Title Surveys

Sheet 11 of 14



13 of 14

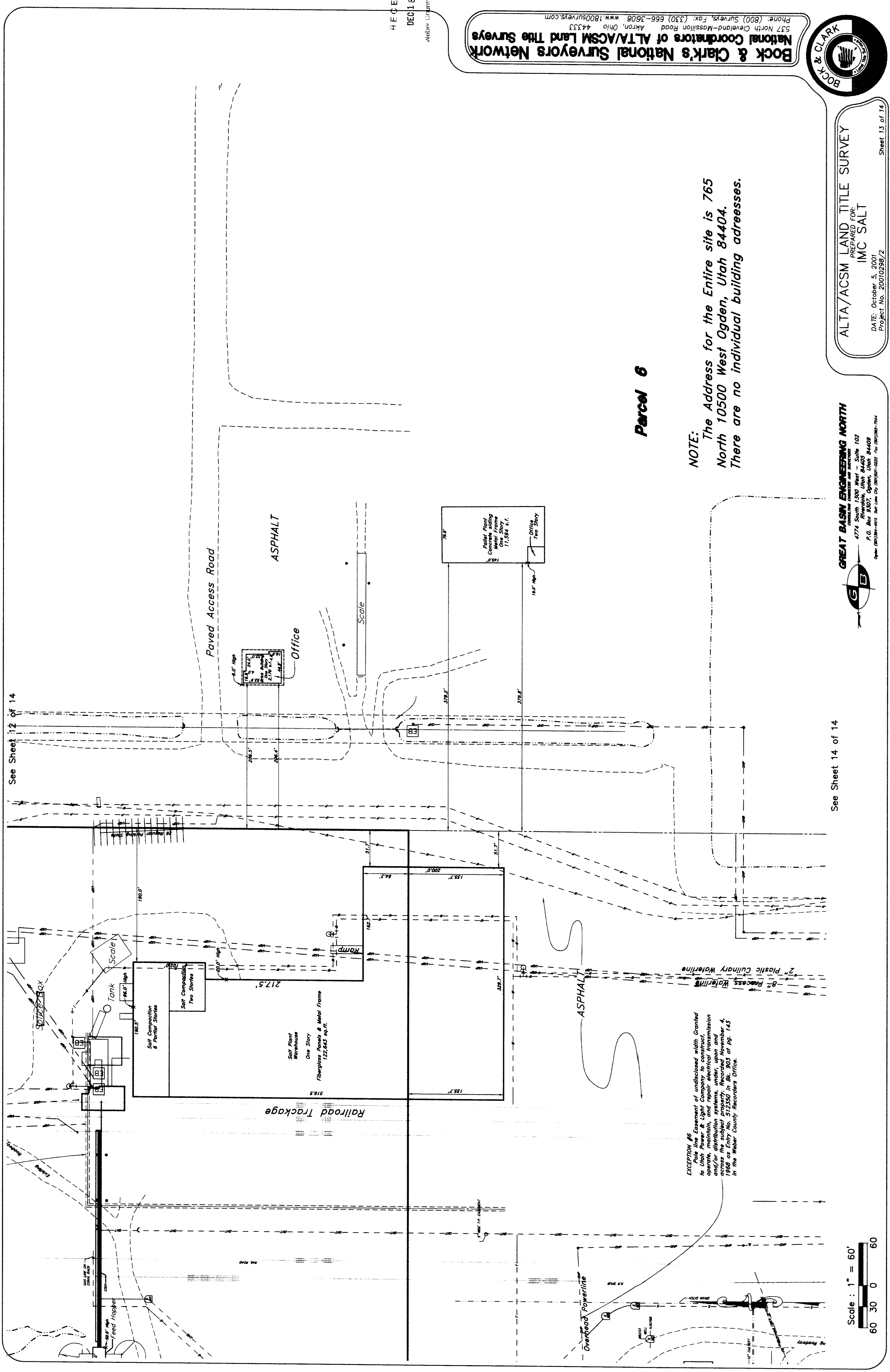
02810

02810

13 of 14

02810

W:\01\ENR\dwg\pnc\pnc.dwg, 12/04/2001 04:21:46 PM, AH



Parcel 6

NOTE:  
The Address for the Entire site is 765 North 10500 West Ogden, Utah 84404. There are no individual building addresses.

ALTA/ACSM LAND TITLE SURVEY  
PREPARED FOR  
IMC SALT  
DATE: October 5, 2001  
Project No. 20010298/2  
Sheet 13 of 14

GREAT BASIN ENGINEERING NORTH  
CONSULTING ENGINEERS AND ARCHITECTS  
4774 South 1200 West #4-202  
P.O. Box 3507, Ogden, Utah 84409  
Open 8:00am-5:00pm M-F, 9:00am-12:00pm S-F, 10:00am-2:00pm Sa  
Scale: 1" = 60'

Bock & Clark's National Surveyors Network  
National Coordinators of ALTA/ACSM Land Title Surveys  
537 North Cleveland-Mission Road Akron, Ohio 44333  
Phone: (800) Surveys, Fax: (330) 666-3608 www.1800surveys.com

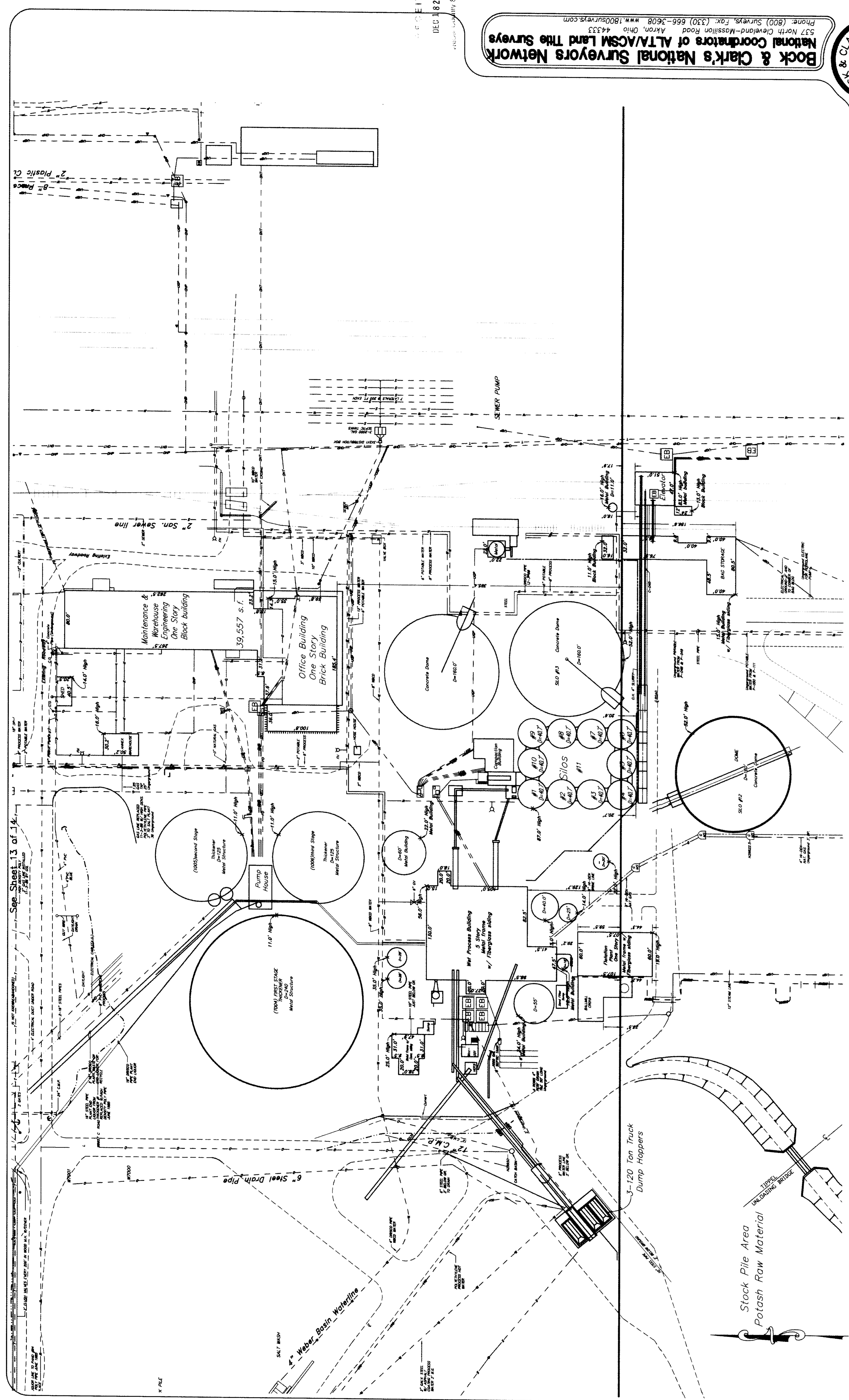
RECEIVED  
DEC 18 2001  
Weber County Surveyors

Scale: 1" = 60'  
60 30 0 60

See Sheet 14 of 14

See Sheet 12 of 14

See Sheet 13 of 14



ALTA/ACSM LAND TITLE SURVEY  
 PREPARED FOR:  
 IMC SALT  
 DATE: October 5, 2007  
 Project No. 20010289/2

GREAT BASIN ENGINEERING NORTH  
 4774 South 1500 West - Suite 102  
 P.O. Box 10000, Salt Lake City, Utah 84102-8409  
 Open 800.544.4833 Salt Lake City 801.581-0222 Fax 801.581-7344



BOCK & CLARK'S National Surveyors Network  
 National Coordinators of ALTA/ACSM Land Title Surveys  
 Phone: (800) Surveys, Fax: (330) 666-3608  
 537 North Cleveland-Mission Road, Akron, Ohio 44333  
 www.1800surveys.com



RECEIVED  
 DEC 18 2001  
 REGIONAL SURVEY SUPERVISOR