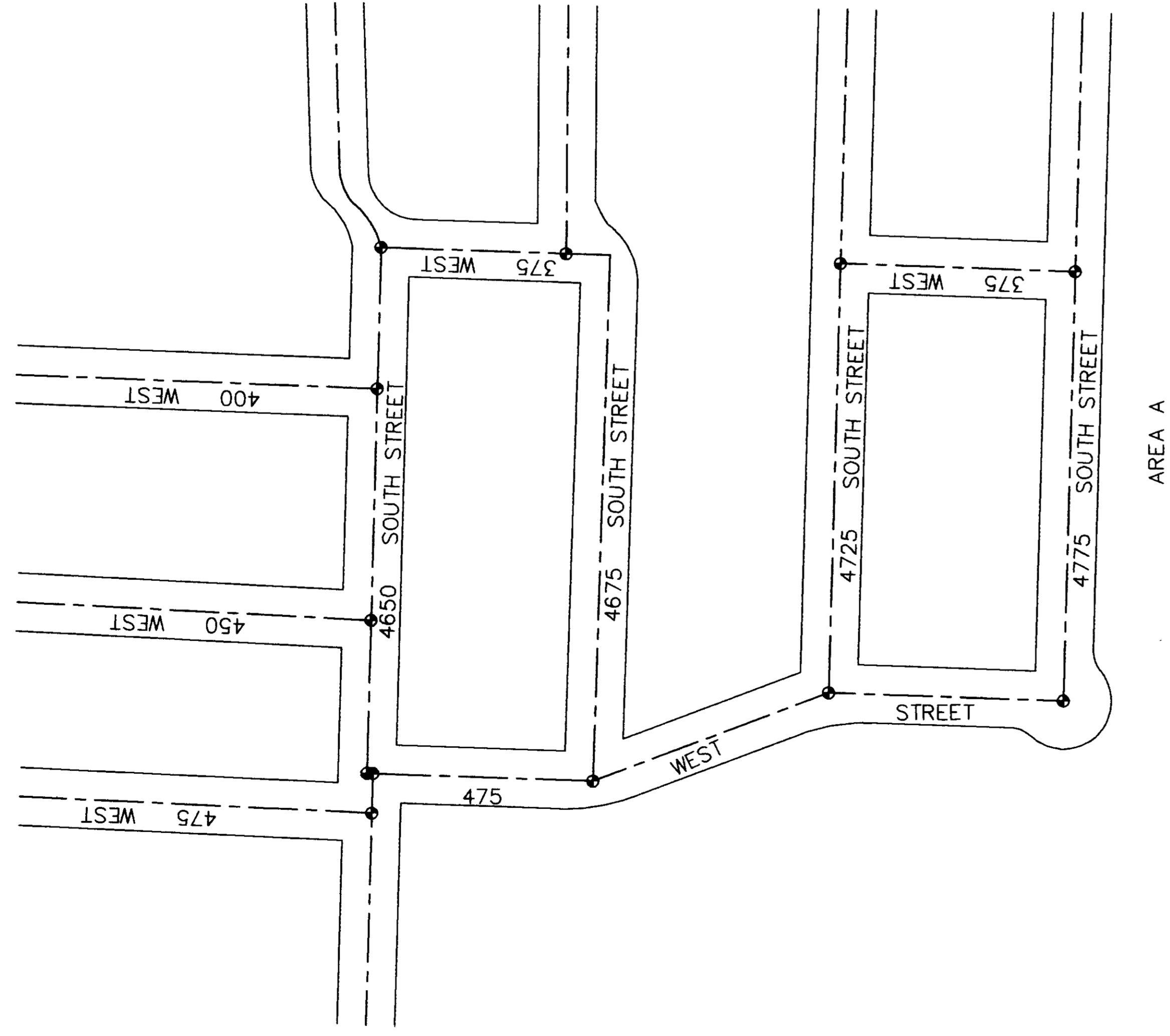
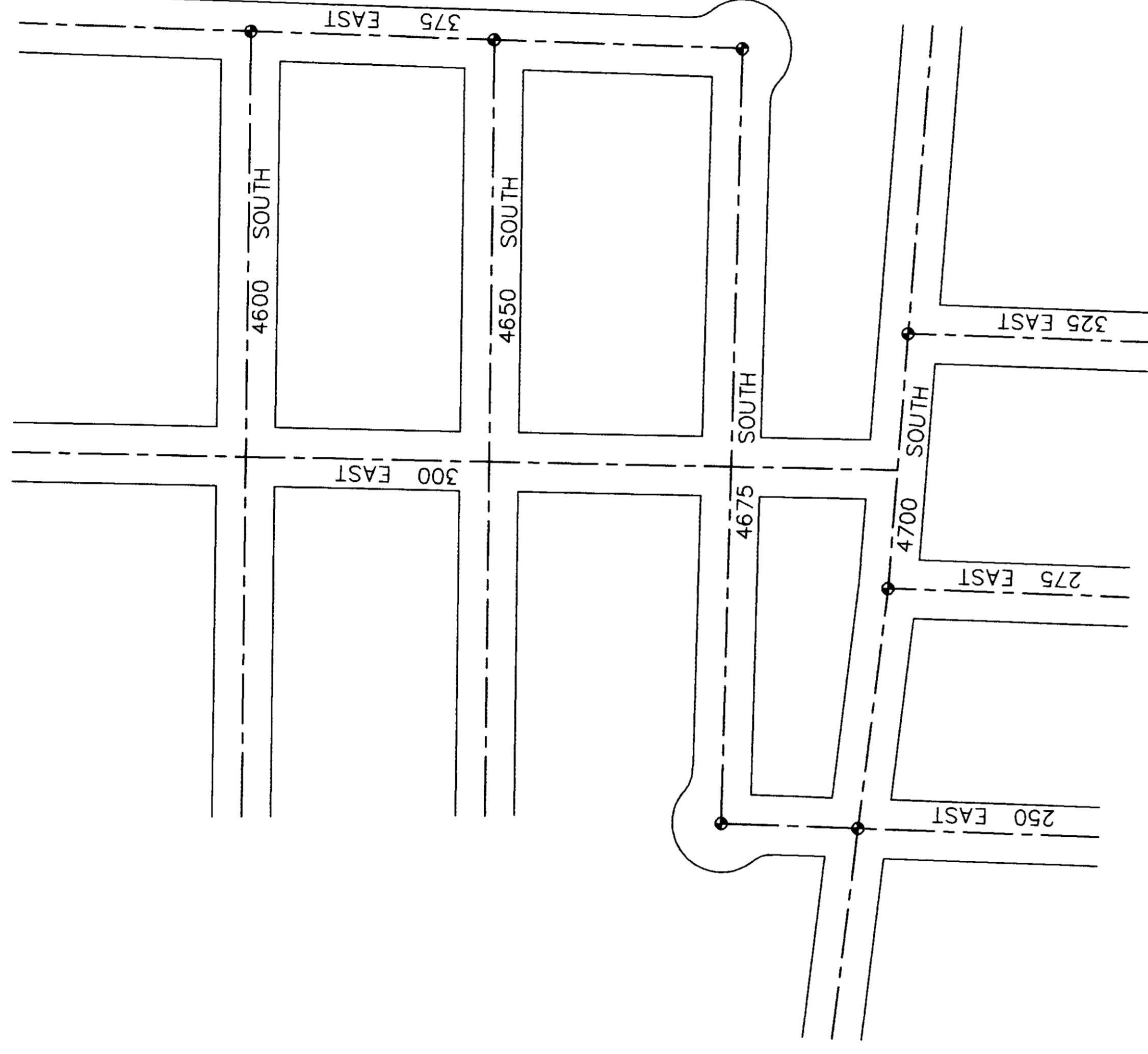


RECORD OF SURVEY
CENTERLINE MONUMENTATION FOR WASHINGTON TERRACE CITY.
JANUARY 2002

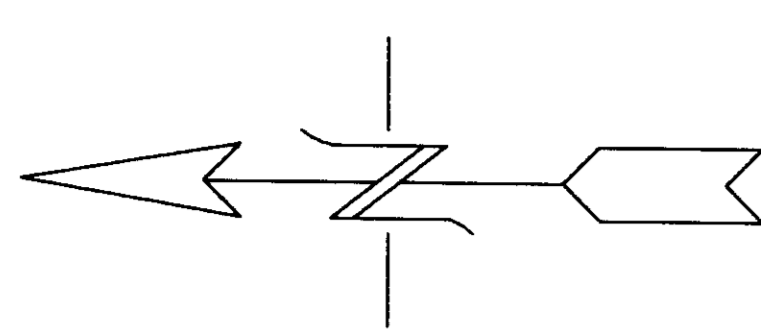
002824



AREA A

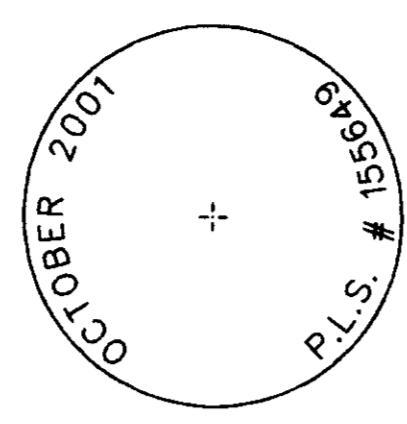


AREA B



Scale: 1"=100'

● LOCATION OF MONUMENTS



BRASS CAP DETAIL

NOTE:
 MONUMENTS WERE NOT CONSTRUCTED BY MOUNTAIN WEST P.L.S., L.L.C. THE MONUMENTS IN AREA B WERE NOT CONSTRUCTED TO CITY SPECIFICATIONS.

SURVEYORS CERTIFICATE

I, DICK N. MECHEM, DO HEREBY CERTIFY THAT I AM A PROFESSIONAL LAND SURVEYOR OF THE STATE OF UTAH, HOLDING LICENSE NUMBER 155649 AND THAT THIS MAP IS A TRUE AND COMPLETE REPRESENTATION OF A SURVEY MADE BY ME, AT THE REQUEST OF WASHINGTON TERRACE CITY AND IN BEHALF OF MOUNTAIN WEST P.L.S., L.L.C.. ALL MONUMENTS SHOWN HEREON ARE OF THE CHARACTER AND OCCUPY THE POSITIONS INDICATED, AND ARE SUFFICIENT TO ENABLE THE SURVEY TO BE RETRACED.

Dick N. Mechem
 DICK N. MECHEM, P.L.S.

Jan 31 2002
 DATE

NARRATIVE AND STATEMENT OF PURPOSE

THIS SURVEY WAS PERFORMED FOR THE PURPOSE OF REESTABLISHING THE LOCATION OF CENTERLINE MONUMENTS ON WASHINGTON TERRACE CITY 2001 STREET PROJECTS. ALL STREETS HAVE BEEN RECONSTRUCTED BY THE CITY. THESE LOCATIONS WERE DETERMINED BY SURVEY PRIOR TO CONSTRUCTION. BRASS MONUMENTS WERE STAMPED, AS SHOWN, AS PER WASHINGTON TERRACE CITY SPECIFICATION.

RECEIVED
 FEB 07 2002
 Weber County Surveyor

RECORD OF SURVEY
 for
WASHINGTON TERRACE CITY
 Located in Section 8,
 Township 5 North, Range 1 West, S11E4E,
 Salt Lake County, Utah

DATE: JAN. 2002 | NO. 00A-01-00 | EXP. 03/31 | CSD: JRM
 NorthWest Professional Land Surveyors, L.L.C.
 1000 North West 1000 West, Suite 100
 Provo, Utah 84607
 Phone: (801) 734-5528 Fax: (801) 734-5531

002824

002824

002824

002824

002824