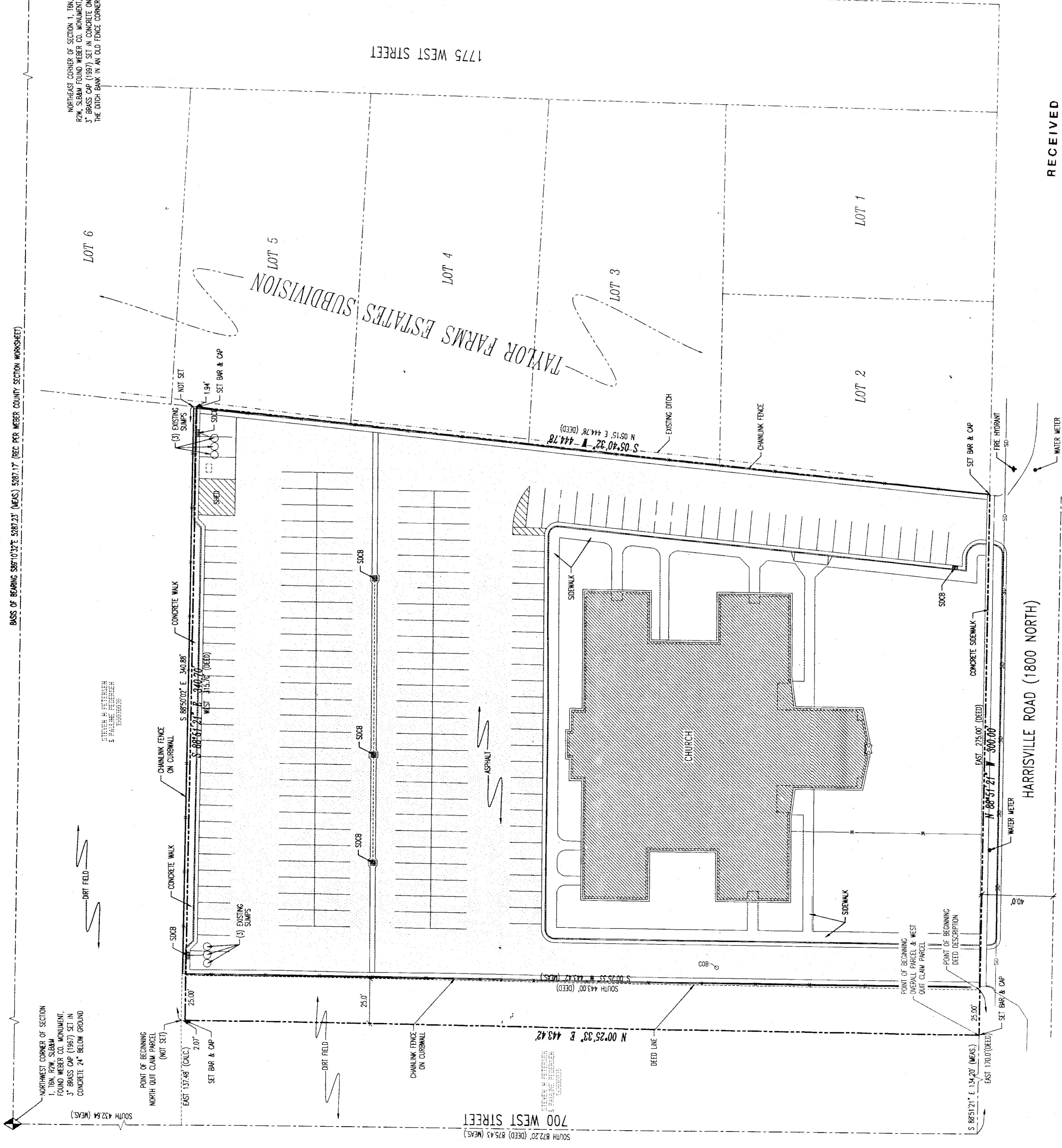


002827

002827

002827

002827



002827

SCALE: 1" = 30'

NORTH

LEGEND

- PROPERTY LINE
- DITCH
- EXIST. FENCE
- STORM DRAIN LINE
- SECTION CORNER MONUMENT
- FOUND BRASS CAP MONUMENT
- EXISTING BUILDING
- WATER VALVE
- FIRE HYDRANT
- SEWER MANHOLE

DEED DESCRIPTION

A PART OF THE NORTHWEST QUARTER OF SECTION 1, TOWNSHIP 6 NORTH, RANGE 2 WEST, SAULT LAKE BASE AND MERIDIAN, U.S. SURVEY, BEGINNING AT A POINT ON THE NORTH RIGHT OF WAY LINE OF COUNTY ROAD 1800 NORTH, SOUTH ALONG THE SECTION LINE 672.00 FEET TO A POINT OF BEGINNING, THENCE SOUTH 89°12'17.4" EAST 134.20 FEET TO THE WEST LINE OF SAULT LAKE BASE AND MERIDIAN, THENCE SOUTH 44°42'33.3" EAST 442.42 FEET TO THE POINT OF BEGINNING.

AS SUBDIVIDED LOCAL ORDINANCES

EXCEPT PORTION WITHIN THE ROAD ON THE SOUTH.

WEST QUARTER CLAIM PAPER

BEING A PART OF THE NORTH LINE OF COUNTY ROAD 1800 NORTH, BEGINNING AT A POINT ON THE NORTH LINE OF COUNTY ROAD 1800 NORTH, SOUTH ALONG SAULT LAKE BASE AND MERIDIAN, RANGE 2 WEST, SAULT LAKE BASE AND MERIDIAN, AND EAST ALONG SAULT LAKE BASE AND MERIDIAN, RANGE 2 WEST, SAULT LAKE BASE AND MERIDIAN, THENCE SOUTH 89°12'17.4" EAST 134.20 FEET TO THE WEST LINE OF SAULT LAKE BASE AND MERIDIAN, THENCE SOUTH 44°42'33.3" EAST 442.42 FEET TO THE POINT OF BEGINNING.

CONVENS. 3.278 ACRES

MONUMENTS: BRASS CAPS

GENERAL INCLUSIVE WEST AND NORTH QUARTER CLAIM PAPER

BEING A PART OF THE NORTH LINE OF COUNTY ROAD 1800 NORTH, BEGINNING AT A POINT ON THE NORTH LINE OF COUNTY ROAD 1800 NORTH, SOUTH ALONG SAULT LAKE BASE AND MERIDIAN, RANGE 2 WEST, SAULT LAKE BASE AND MERIDIAN, AND EAST ALONG SAULT LAKE BASE AND MERIDIAN, RANGE 2 WEST, SAULT LAKE BASE AND MERIDIAN, THENCE SOUTH 89°12'17.4" EAST 134.20 FEET TO THE WEST LINE OF SAULT LAKE BASE AND MERIDIAN, THENCE SOUTH 44°42'33.3" EAST 442.42 FEET TO THE POINT OF BEGINNING.

CONVENS. 3.278 ACRES

GENERAL INCLUSIVE WEST AND NORTH QUARTER CLAIM PAPER

BEING A PART OF THE NORTH LINE OF COUNTY ROAD 1800 NORTH, BEGINNING AT A POINT ON THE NORTH LINE OF COUNTY ROAD 1800 NORTH, SOUTH ALONG SAULT LAKE BASE AND MERIDIAN, RANGE 2 WEST, SAULT LAKE BASE AND MERIDIAN, AND EAST ALONG SAULT LAKE BASE AND MERIDIAN, RANGE 2 WEST, SAULT LAKE BASE AND MERIDIAN, THENCE SOUTH 89°12'17.4" EAST 134.20 FEET TO THE WEST LINE OF SAULT LAKE BASE AND MERIDIAN, THENCE SOUTH 44°42'33.3" EAST 442.42 FEET TO THE POINT OF BEGINNING.

CONVENS. 3.278 ACRES

GENERAL INCLUSIVE WEST AND NORTH QUARTER CLAIM PAPER

BEING A PART OF THE NORTH LINE OF COUNTY ROAD 1800 NORTH, BEGINNING AT A POINT ON THE NORTH LINE OF COUNTY ROAD 1800 NORTH, SOUTH ALONG SAULT LAKE BASE AND MERIDIAN, RANGE 2 WEST, SAULT LAKE BASE AND MERIDIAN, AND EAST ALONG SAULT LAKE BASE AND MERIDIAN, RANGE 2 WEST, SAULT LAKE BASE AND MERIDIAN, THENCE SOUTH 89°12'17.4" EAST 134.20 FEET TO THE WEST LINE OF SAULT LAKE BASE AND MERIDIAN, THENCE SOUTH 44°42'33.3" EAST 442.42 FEET TO THE POINT OF BEGINNING.

CONVENS. 3.278 ACRES

GENERAL INCLUSIVE WEST AND NORTH QUARTER CLAIM PAPER

BEING A PART OF THE NORTH LINE OF COUNTY ROAD 1800 NORTH, BEGINNING AT A POINT ON THE NORTH LINE OF COUNTY ROAD 1800 NORTH, SOUTH ALONG SAULT LAKE BASE AND MERIDIAN, RANGE 2 WEST, SAULT LAKE BASE AND MERIDIAN, AND EAST ALONG SAULT LAKE BASE AND MERIDIAN, RANGE 2 WEST, SAULT LAKE BASE AND MERIDIAN, THENCE SOUTH 89°12'17.4" EAST 134.20 FEET TO THE WEST LINE OF SAULT LAKE BASE AND MERIDIAN, THENCE SOUTH 44°42'33.3" EAST 442.42 FEET TO THE POINT OF BEGINNING.

CONVENS. 3.278 ACRES

GENERAL INCLUSIVE WEST AND NORTH QUARTER CLAIM PAPER

BEING A PART OF THE NORTH LINE OF COUNTY ROAD 1800 NORTH, BEGINNING AT A POINT ON THE NORTH LINE OF COUNTY ROAD 1800 NORTH, SOUTH ALONG SAULT LAKE BASE AND MERIDIAN, RANGE 2 WEST, SAULT LAKE BASE AND MERIDIAN, AND EAST ALONG SAULT LAKE BASE AND MERIDIAN, RANGE 2 WEST, SAULT LAKE BASE AND MERIDIAN, THENCE SOUTH 89°12'17.4" EAST 134.20 FEET TO THE WEST LINE OF SAULT LAKE BASE AND MERIDIAN, THENCE SOUTH 44°42'33.3" EAST 442.42 FEET TO THE POINT OF BEGINNING.

CONVENS. 3.278 ACRES

GENERAL INCLUSIVE WEST AND NORTH QUARTER CLAIM PAPER

BEING A PART OF THE NORTH LINE OF COUNTY ROAD 1800 NORTH, BEGINNING AT A POINT ON THE NORTH LINE OF COUNTY ROAD 1800 NORTH, SOUTH ALONG SAULT LAKE BASE AND MERIDIAN, RANGE 2 WEST, SAULT LAKE BASE AND MERIDIAN, AND EAST ALONG SAULT LAKE BASE AND MERIDIAN, RANGE 2 WEST, SAULT LAKE BASE AND MERIDIAN, THENCE SOUTH 89°12'17.4" EAST 134.20 FEET TO THE WEST LINE OF SAULT LAKE BASE AND MERIDIAN, THENCE SOUTH 44°42'33.3" EAST 442.42 FEET TO THE POINT OF BEGINNING.

CONVENS. 3.278 ACRES

GENERAL INCLUSIVE WEST AND NORTH QUARTER CLAIM PAPER

BEING A PART OF THE NORTH LINE OF COUNTY ROAD 1800 NORTH, BEGINNING AT A POINT ON THE NORTH LINE OF COUNTY ROAD 1800 NORTH, SOUTH ALONG SAULT LAKE BASE AND MERIDIAN, RANGE 2 WEST, SAULT LAKE BASE AND MERIDIAN, AND EAST ALONG SAULT LAKE BASE AND MERIDIAN, RANGE 2 WEST, SAULT LAKE BASE AND MERIDIAN, THENCE SOUTH 89°12'17.4" EAST 134.20 FEET TO THE WEST LINE OF SAULT LAKE BASE AND MERIDIAN, THENCE SOUTH 44°42'33.3" EAST 442.42 FEET TO THE POINT OF BEGINNING.

CONVENS. 3.278 ACRES

GENERAL INCLUSIVE WEST AND NORTH QUARTER CLAIM PAPER

BEING A PART OF THE NORTH LINE OF COUNTY ROAD 1800 NORTH, BEGINNING AT A POINT ON THE NORTH LINE OF COUNTY ROAD 1800 NORTH, SOUTH ALONG SAULT LAKE BASE AND MERIDIAN, RANGE 2 WEST, SAULT LAKE BASE AND MERIDIAN, AND EAST ALONG SAULT LAKE BASE AND MERIDIAN, RANGE 2 WEST, SAULT LAKE BASE AND MERIDIAN, THENCE SOUTH 89°12'17.4" EAST 134.20 FEET TO THE WEST LINE OF SAULT LAKE BASE AND MERIDIAN, THENCE SOUTH 44°42'33.3" EAST 442.42 FEET TO THE POINT OF BEGINNING.

CONVENS. 3.278 ACRES

GENERAL INCLUSIVE WEST AND NORTH QUARTER CLAIM PAPER

BEING A PART OF THE NORTH LINE OF COUNTY ROAD 1800 NORTH, BEGINNING AT A POINT ON THE NORTH LINE OF COUNTY ROAD 1800 NORTH, SOUTH ALONG SAULT LAKE BASE AND MERIDIAN, RANGE 2 WEST, SAULT LAKE BASE AND MERIDIAN, AND EAST ALONG SAULT LAKE BASE AND MERIDIAN, RANGE 2 WEST, SAULT LAKE BASE AND MERIDIAN, THENCE SOUTH 89°12'17.4" EAST 134.20 FEET TO THE WEST LINE OF SAULT LAKE BASE AND MERIDIAN, THENCE SOUTH 44°42'33.3" EAST 442.42 FEET TO THE POINT OF BEGINNING.

CONVENS. 3.278 ACRES

GENERAL INCLUSIVE WEST AND NORTH QUARTER CLAIM PAPER

BEING A PART OF THE NORTH LINE OF COUNTY ROAD 1800 NORTH, BEGINNING AT A POINT ON THE NORTH LINE OF COUNTY ROAD 1800 NORTH, SOUTH ALONG SAULT LAKE BASE AND MERIDIAN, RANGE 2 WEST, SAULT LAKE BASE AND MERIDIAN, AND EAST ALONG SAULT LAKE BASE AND MERIDIAN, RANGE 2 WEST, SAULT LAKE BASE AND MERIDIAN, THENCE SOUTH 89°12'17.4" EAST 134.20 FEET TO THE WEST LINE OF SAULT LAKE BASE AND MERIDIAN, THENCE SOUTH 44°42'33.3" EAST 442.42 FEET TO THE POINT OF BEGINNING.

CONVENS. 3.278 ACRES

GENERAL INCLUSIVE WEST AND NORTH QUARTER CLAIM PAPER

BEING A PART OF THE NORTH LINE OF COUNTY ROAD 1800 NORTH, BEGINNING AT A POINT ON THE NORTH LINE OF COUNTY ROAD 1800 NORTH, SOUTH ALONG SAULT LAKE BASE AND MERIDIAN, RANGE 2 WEST, SAULT LAKE BASE AND MERIDIAN, AND EAST ALONG SAULT LAKE BASE AND MERIDIAN, RANGE 2 WEST, SAULT LAKE BASE AND MERIDIAN, THENCE SOUTH 89°12'17.4" EAST 134.20 FEET TO THE WEST LINE OF SAULT LAKE BASE AND MERIDIAN, THENCE SOUTH 44°42'33.3" EAST 442.42 FEET TO THE POINT OF BEGINNING.

CONVENS. 3.278 ACRES

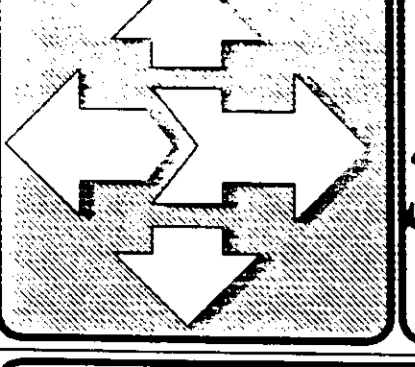
GENERAL INCLUSIVE WEST AND NORTH QUARTER CLAIM PAPER

BEING A PART OF THE NORTH LINE OF COUNTY ROAD 1800 NORTH, BEGINNING AT A POINT ON THE NORTH LINE OF COUNTY ROAD 1800 NORTH, SOUTH ALONG SAULT LAKE BASE AND MERIDIAN, RANGE 2 WEST, SAULT LAKE BASE AND MERIDIAN, AND EAST ALONG SAULT LAKE BASE AND MERIDIAN, RANGE 2 WEST, SAULT LAKE BASE AND MERIDIAN, THENCE SOUTH 89°12'17.4" EAST 134.20 FEET TO THE WEST LINE OF SAULT LAKE BASE AND MERIDIAN, THENCE SOUTH 44°42'33.3" EAST 442.42 FEET TO THE POINT OF BEGINNING.

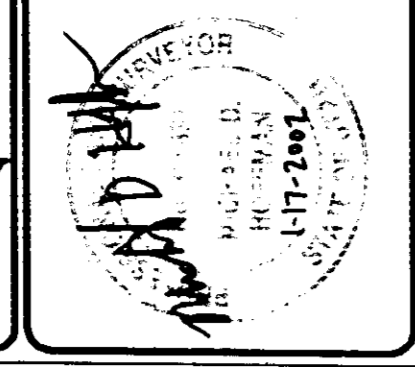
CONVENS. 3.278 ACRES

GENERAL INCLUSIVE WEST AND NORTH QUARTER CLAIM PAPER

BEING A PART OF THE NORTH LINE OF COUNTY ROAD 1800 NORTH, BEGINNING AT A POINT ON THE NORTH LINE OF COUNTY ROAD 1800 NORTH, SOUTH ALONG SAULT LAKE BASE AND MERIDIAN, RANGE 2 WEST, SAULT LAKE BASE AND MERIDIAN, AND EAST ALONG SAULT LAKE BASE AND MERIDIAN, RANGE 2 WEST, SAULT LAKE BASE AND MERIDIAN, THENCE SOUTH 89°12'17.4" EAST 134.20 FEET TO THE WEST LINE OF SAULT LAKE BASE AND MERIDIAN, THENCE SOUTH 44°42'33.3" EAST 442.42 FEET TO THE POINT OF BEGINNING.



McNEIL ENGINEERING & LAND SURVEYING, L.C.
 PROFESSIONAL CIVIL ENGINEERING & LAND SURVEYING SERVICES
 6695 SOUTH 900 EAST MIDVALE, UTAH 84047
 TEL: (801) 265-1700 FAX: (801) 265-1701
 VISIT OUR WEB SITE AT WWW.MCNEILSVC.COM



FARWEST 13&4 WARDS
 1800 WEST 1800 NORTH PLANE CITY
 LOCATED IN THE NW 1/4 OF SECTION 1, T18N, R10W, S18E

BOUNDARY SURVEY

REV.	DATE	DESCRIPTION
1	11-17-2001	11-17-2001

DATE: 10/29/2001
 DRAWN BY: SB/CS
 CALC. BY: MH
 SURVEYED BY: MW/JW
 CHECKED BY: MH
 SCALE: 1" = 30'
 COMP. DRWG. 210281

JOB NO: 210281
 SHEET NUMBER
1 of 1

RECEIVED
 FEB 19 2002
 Weber County Surveyor

002827

002827

002827