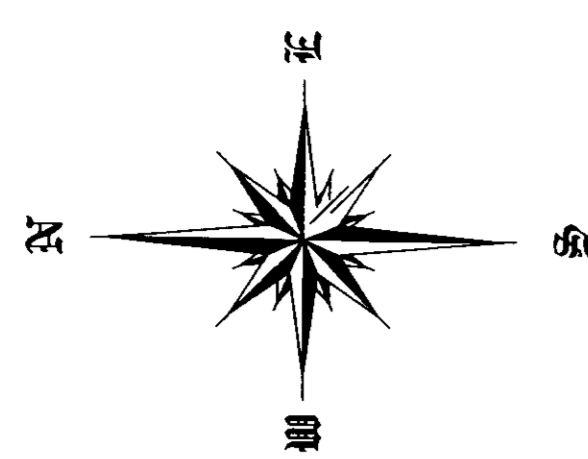
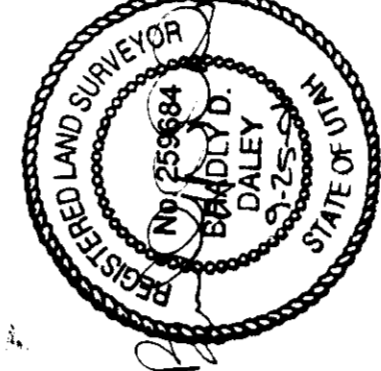
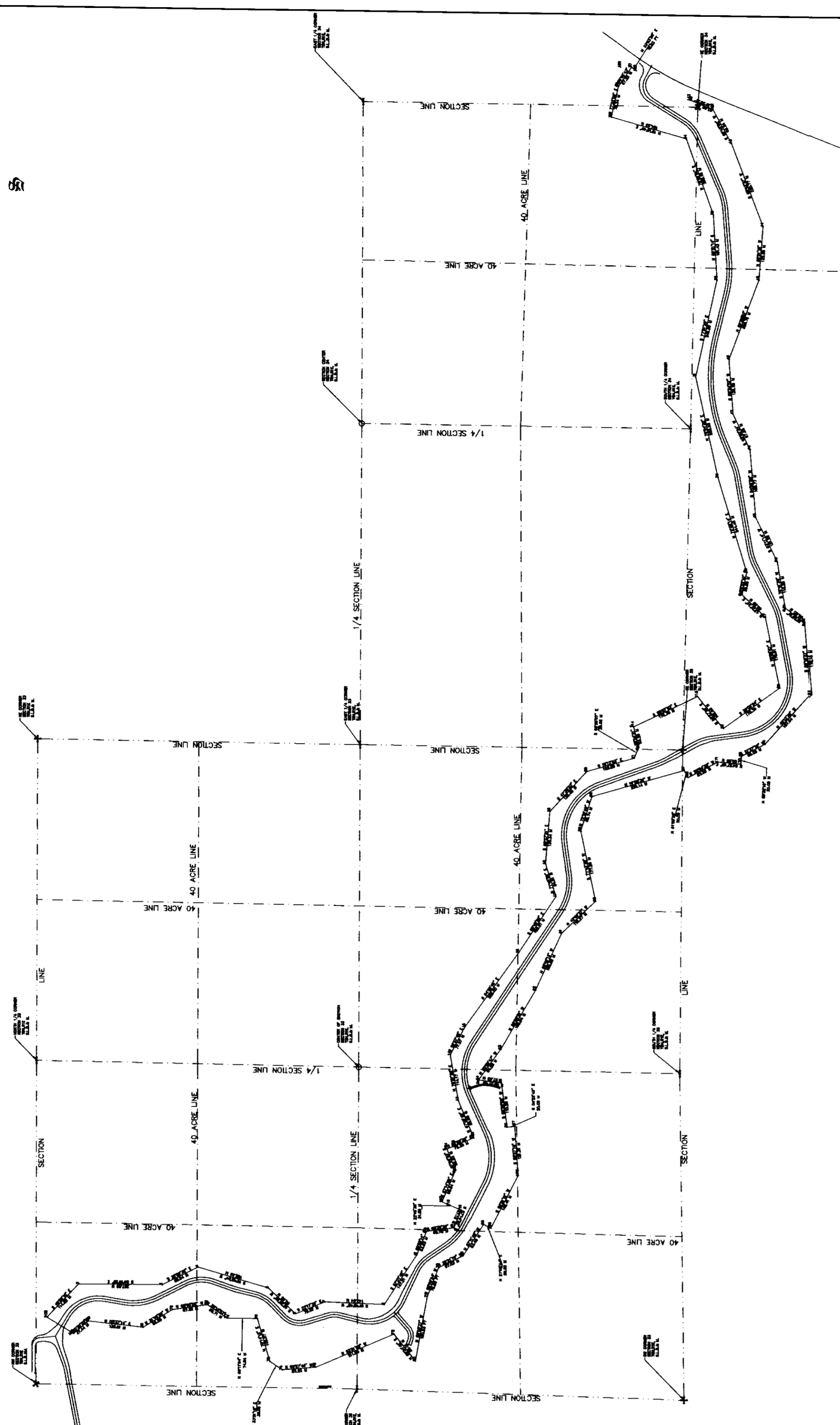


SP-1975(1)0
Trappers Loop - Snowbasin Road
Right of Way Markers

Point	Northing	Easting	Station	Offset		Remarks	Elevation	R	NEW POINT	1823.326
				Side	Distance					
1	9856.841	580125.596	2030	L	41.750	No Change	1910.625	R	69.365	1838.009
2	9849.057	580208.869	2117.956	L	45.017	No Change	1902.657	R	90.869	1875.188
3	98283.095	580209.908	2326.181	L	22.841	No Change	1926.302	R	74.919	1882.223
4	98194.401	580255.085	2414.6	L	31.760	No Change	1933.547	R	43.152	1870.370
5	98019.068	580205.467	2580.924	L	26.650	No Change	1944.920	R	43.543	1887.620
6	97951.293	580143.169	2676.832	L	21.647	No Change	1952.750	R	92.104	1899.315
7	97877.675	580173.352	2769.026	L	34.335	No Change	1955.060	R	27.769	1886.233
8	97730.110	580168.682	2831.957	L	29.831	No Change	1970.840	R	21.543	1912.369
9	97650.211	580292.321	4066.473	L	22.448	No Change	1982.675	R	60.363	1933.585
10	97626.405	580351.652	4115.952	L	55.446	No Change	1971.702	R	53.392	1928.303
11	97459.487	580361.994	4184.56	L	18.104	No Change	1991.563	R	38.915	1919.282
119	97540.247	580405.474	4234.346	L	22.667	NEW POINT	1992.148	R	53.392	1928.303
12	97456.095	580425.547	4230.737	L	74.429	NEW POINT	1987.465	R	53.126	1928.303
13	97354.689	580504.701	4316.365	L	80.399	NEW POINT	1987.678	R	72.630	1918.196
14	97244.128	580557.109	4454.654	L	106.196	NEW POINT	1989.350	R	59.736	1915.590
15	97101.530	580585.369	4451.786	L	33.886	NEW POINT	1995.033	R	64.121	1913.819
16	97049.589	580677.417	4552.085	L	30.435	No Change	1992.522	R	44.128	1927.399
17	97051.510	581557.518	4544.21	L	40.203	No Change	1986.767	R	41.538	1941.574
18	97070.153	580769.722	4644.21	L	38.142	No Change	1981.844	R	71.287	1966.595
19	97041.982	581045.248	4837.599	L	29.469	No Change	1960.972	R	32.754	1958.146
20	97009.954	581186.049	5112.232	L	26.688	No Change	1947.640	R	57.247	1978.851
21	97038.544	581766.693	5211.252	L	54.148	No Change	1945.777	R	66.664	1996.088
22	9726.217	581986.627	5319.964	L	45.079	No Change	1937.811	R	33.690	1996.476
23	97234.845	581496.656	5424.981	L	42.107	No Change	1913.844	R	85.882	2003.723
24	97117.124	581530.890	5542.899	L	32.580	No Change	1909.516	R	52.983	2013.224
25	97105.510	581557.518	5562.782	L	53.570	No Change	1903.312	R	72.136	2016.744
26	9718.927	581609.058	5587.961	L	108.575	NEW POINT	1890.073	R	71.875	2009.779
27	96980.319	581686.248	6104.408	L	109.208	NEW POINT	1883.671	R	62.896	2005.332
28	96955.390	581709.891	6146.894	L	20.872	No Change	1901.538	R	42.886	2004.016
29	96929.256	582279.440	6365.515	L	24.207	No Change	1906.610	R	46.613	2010.220
30	96918.990	582718.333	6557.844	L	32.902	No Change	1903.887	R	36.471	1995.863
31	96897.664	583067.534	6638.721	L	61.587	No Change	1886.501	R	51.360	1992.586
32	96850.926	581940.220	6638.721	L	26.287	No Change	1900.740	R	128.331	1991.297
33	96812.664	582229.026	6822.046	L	47.168	No Change	1882.954	R	44.503	1983.313
34	96770.632	582478.302	7171.203	L	37.866	No Change	1869.124	R	113.417	1995.521
35	96732.812	581984.681	7579.515	L	30.811	No Change	1833.822	R	128.948	1993.936
36	96697.664	583067.534	7794.248	L	27.520	No Change	1877.974	R	111.811	1995.585
37	96650.926	581940.220	7952.632	L	101.812	No Change	1783.097	R	51.150	1969.510
38	96629.256	582279.440	7975.3	L	61.186	No Change	1800.592	R	74.075	1992.442
39	96618.990	582718.333	8004.058	L	42.503	NEW POINT	1814.343	R	58.497	1953.624
40	96607.664	583067.534	8002.229	L	27.578	NEW POINT	1816.278	R	43.192	1939.397
41	96577.675	580173.352	8022.229	L	27.578	NEW POINT	1816.278	R	61.104	1938.541
42	96537.68	583995.855	CENTER OF ARC FOR INFORMATION ONLY							
43	96989.339	58363.626	7851.539	R	51.696	NEW POINT	1820.185	R	35.400	1917.959



NOTATION: THE PURPOSE OF THIS SURVEY WAS TO STAKE AND
MARKERS TO BE USED IN THE FUTURE TO RECONSTRUCT THE
STATE ROAD SP-1975(1)0 TRAPPERS LOOP - SNOWBASIN. ALL
DIMENSIONS, DISTANCES, OFFSETS, CENTERLINE ALIGNMENT, BASIS
POINTS, AND BEARING ANGLES WERE ESTABLISHED IN THIS PLAN.
ON TRANSFER OF LAND TITLE IS BEING INTERFERED.

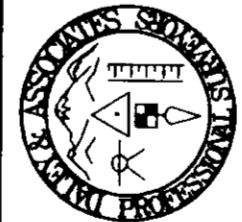


RECEIVED
FEB 27 2008
Weaver County Surveyor

002828

RIGHT-OF-WAY MARKER SURVEY

PROJECT: TRAPPERS LOOP - SNOW BASIN
RIGHT OF WAY MARKERS



DALEY & ASSOCIATES
PROFESSIONAL SURVEYORS
66 SOUTH MAIN ST. P.O. BOX 101
TOLSON, UTAH 84401
TEL (801) 466-4457 FAX (801) 466-6112

DATE PLOTTED: SEPTEMBER 25, 2001
SURVEYED BY: B.D.
PROJECT NO.: 89-18
SCALE: 1" = 200'