

AMENDED OGDEN COMMERCIAL & INDUSTRIAL PARK-PLAT D-LOT 70 & PLAT E-LOT 85

A PART OF THE N.W. 1/4 OF SECTION 36,

T. 6 N., R. 2 W., S.L.B.&M.

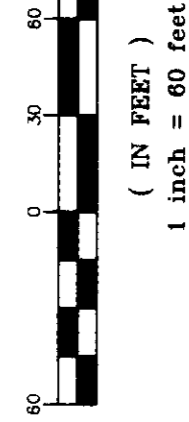
WEBER COUNTY, UTAH

JUNE 2001

NORTH 1/4 CORNER OF SEC. 36, TOWNSHIP 6 NORTH, RANGE 2 WEST, S.L.B. & M., WEBER CO. SURVEYORS BRASS CAPPED MONUMENT.



GRAPHIC SCALE



OGDEN CITY COMMUNITY AND ECONOMIC DEVELOPMENT DEPARTMENT

I HEREBY CERTIFY THAT THE SUBMISSION OF THIS PLAT TO THE CITY OF OGDEN, UTAH, COMPLETES ALL CITY REQUIREMENTS OF THE SUBDIVISION ORDINANCE OF OGDEN CITY, AND CONFORMS WITH THE APPROVED PRELIMINARY PLAT, AS REQUIRED BY THE CITY OF OGDEN. I HAVE REVIEWED THE PLAT AND APPROVE THE CITY OF OGDEN AND THE MAJOR OF OGDEN CITY, PRE-REQUISITE TO FINAL PLAT APPROVAL BY THE MAJOR OF OGDEN CITY.

SIGNED THIS _____ DAY OF _____, 2001
MANAGER, CURRENT PLANNING DIVISION

OGDEN CITY ENGINEER

I HEREBY CERTIFY THAT I HAVE CAREFULLY INVESTIGATED THE LINES OF SURVEY OF THE FOREGOING PLAT AND LEGAL DESCRIPTION OF THE SAME, AND THAT THE LINES AND MONUMENTS ON RECORD IN THIS OFFICE WITH THE LIES AND MONUMENTS ON RECORD IN THIS OFFICE.

SIGNED THIS _____ DAY OF _____, 2001
OGDEN CITY ENGINEER

CITY ATTORNEY'S OFFICE

APPROVED BY THE CITY ATTORNEY'S OFFICE THIS _____ DAY OF _____, 2001.

CITY ATTORNEY

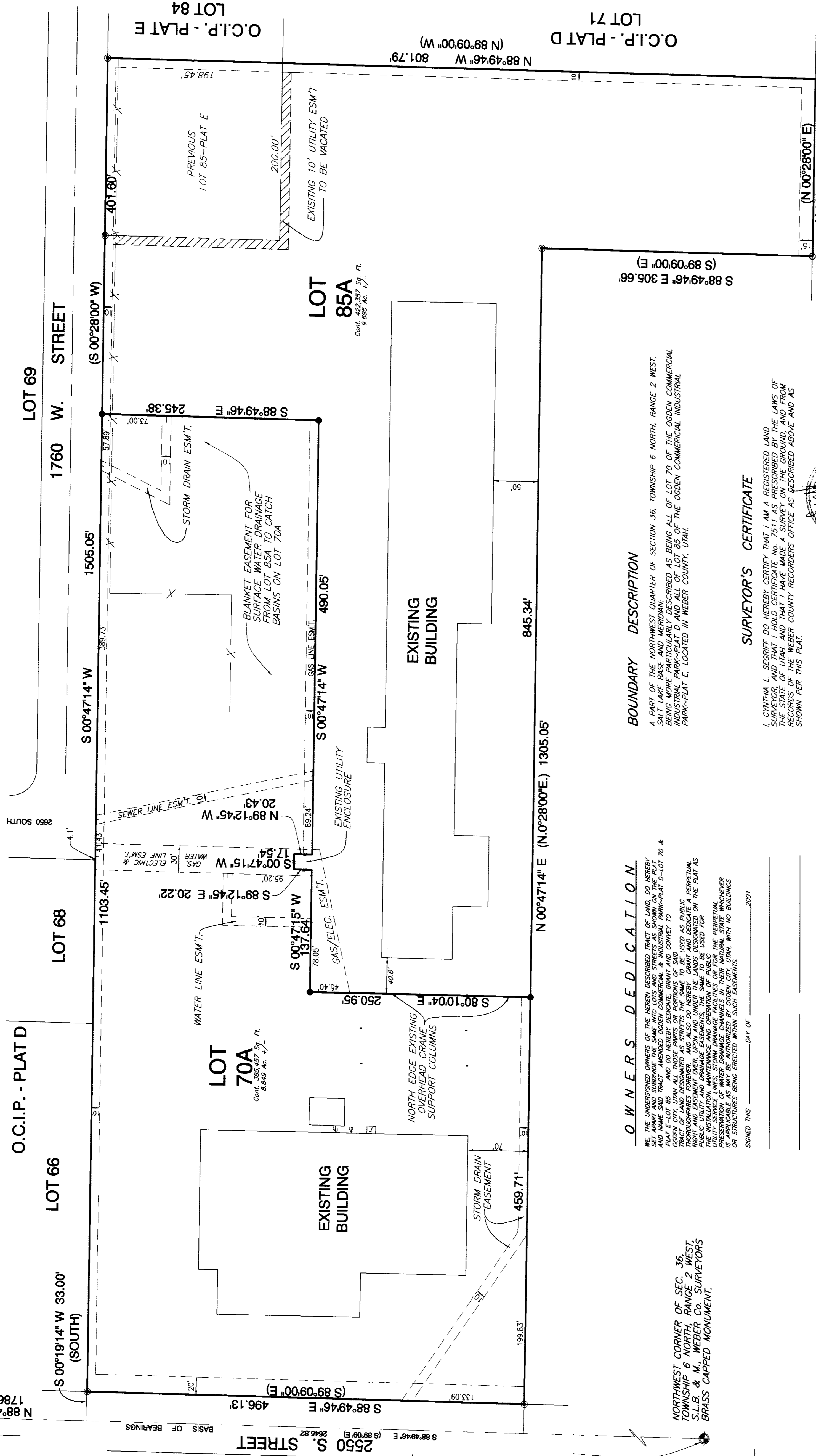
OGDEN CITY APPROVAL

THIS PLAT, AND THE DEDICATIONS OFFERED HEREIN, ARE APPROVED AND ACCEPTED BY THE MAJOR OF OGDEN CITY.

SIGNED THIS _____ DAY OF _____, 2001

MATTHEW R. COOPREY, MAJOR

ATTEST: _____ CITY RECORDER



O W N E R S D E D I C A T I O N

WE, THE UNDERSIGNED OWNERS OF THE HEREIN DESCRIBED TRACT OF LAND, DO HEREBY DEDICATE TO THE PUBLIC THE RIGHT OF WAY AND TRACT DESCRIBED IN THE COMMERCIAL AND INDUSTRIAL PARK-PLAT E-LOT 70 & LOT 85, UTAH. ALL UNOCCUPIED PORTIONS OF THE TRACT TO BE USED AS PUBLIC STREETS AND HIGHWAYS. WE HEREBY AGREE TO MAINTAIN AND OPERATE THE PUBLIC UTILITY LINES, WATER LINES, SEWER LINES, GAS LINES, AND OVERHEAD GRANTS SUPPORT COLUMNS, AND TO MAINTAIN AND OPERATE THE PUBLIC UTILITY LINES, WATER LINES, SEWER LINES, GAS LINES, AND OVERHEAD GRANTS SUPPORT COLUMNS, AND TO MAINTAIN AND OPERATE THE PUBLIC UTILITY LINES, WATER LINES, SEWER LINES, GAS LINES, AND OVERHEAD GRANTS SUPPORT COLUMNS, AND TO MAINTAIN AND OPERATE THE PUBLIC UTILITY LINES, WATER LINES, SEWER LINES, GAS LINES, AND OVERHEAD GRANTS SUPPORT COLUMNS.

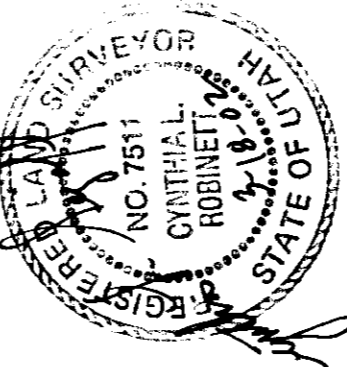
B O U N D A R Y D E S C R I P T I O N

A PART OF THE NORTHWEST QUARTER OF SECTION 36, TOWNSHIP 6 NORTH, RANGE 2 WEST, SALT LAKE BASE AND MERIDIAN, BEING MORE PARTICULARLY DESCRIBED AS BEING ALL OF LOT 70 OF THE OGDEN COMMERCIAL AND INDUSTRIAL PARK-PLAT E, LOCATED IN WEBER COUNTY, UTAH.

S U R V E Y O R S C E R T I F I C A T E

I, CYNTHIA L. SEGRIF, DO HEREBY CERTIFY THAT I AM A REGISTERED LAND SURVEYOR AND THAT I HOLD CERTIFICATE NO. 7511 AS PRESCRIBED BY THE LAWS OF THE STATE OF UTAH, AND THAT I HAVE MADE A SURVEY ON THE GROUND, AND FROM THE INSTRUMENTS IN THE WEBER COUNTY RECORDERS OFFICE AS DESCRIBED ABOVE AND AS SHOWN ON THIS PLAT.

CYNTHIA L. SEGRIF, P.L.S. 7511(170143)
PRO CYNTHIA L.S. ROBERTS

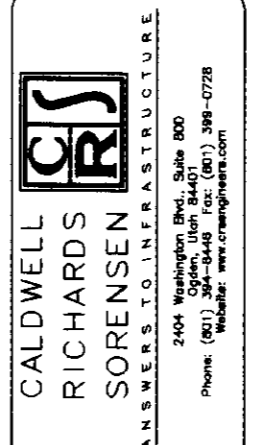


C O R P O R A T E A C K N O W L E D G E M E N T

STATE OF UTAH, COUNTY OF WEBER, I, _____, DO hereby certify that I am a duly qualified and authorized officer of the corporation named herein, and that I have caused the foregoing instrument to be signed and sealed in accordance with the laws of the State of Utah, and that the same has been duly recorded in the office of the County Recorder of said county, and that the same is a true and correct copy of the original instrument as the same appears in the records of said county.

LEGEND:

- () DISTANCE AND OR BEARING PER DEED OR PLAT.
- () NO PARALLELS IS MEASURED DISTANCE OR ROTATED PLAT OR DEED BEARING TO STATE PLANE GRID BEARING.
- () EXISTING FENCES.
- () FND 1/2" REBAR
- () SET 6"X1" REBAR/C. & L.S. CAP.
- () EASEMENT TO BE VACATED.
- () UTILITY EASEMENT.



COUNTY RECORDER
ENTRY NO. _____
FILED FOR RECORD AND RECORDED _____
IN BOOK _____
OF OFFICIAL RECORDS _____
RECORDED FOR _____
COUNTY RECORDER _____

RECEIVED
MAR 18 2002
Webb County Surveyor