

ONE FOR THE KID SUBDIVISION A PART OF THE S.E. 1/4 OF SECTION 15, T. 6 N., R. 3 W., S1.R.6.M. WEBER COUNTY, UTAH JUNE 15TH, 2001

OWNERS DEDICATION

THE UNDERSIGNED OWNERS OF THE HEREIN DESCRIBED TRACT OF LAND, DO HEREBY DEDICATE TO THE PUBLIC THE HEREIN DESCRIBED TRACT OF LAND, AND HEREBY AGREE TO CONVEY TO THE PUBLIC THE HEREIN DESCRIBED TRACT OF LAND FOR THE USE AND PURPOSES OF THE HEREIN DESCRIBED TRACT OF LAND, AND TO ACCEPT AS EASEMENTS THE HEREIN DESCRIBED TRACT OF LAND AS SHOWN ON THE ATTACHED PLAT AND TO ACCEPT AS EASEMENTS THE HEREIN DESCRIBED TRACT OF LAND AS SHOWN ON THE ATTACHED PLAT AND TO ACCEPT AS EASEMENTS THE HEREIN DESCRIBED TRACT OF LAND AS SHOWN ON THE ATTACHED PLAT.

SIGNED THIS _____ DAY OF _____, 2001.

ACKNOWLEDGEMENT

STATE OF UTAH, ss.
COUNTY OF WEBER, ss.
ON THIS _____ DAY OF _____, 2001, AND
PERSONALLY APPEARED _____
EXECUTED THE SAME.
WITNESSES OF THE FOREGOING INSTRUMENT WHO DULY ACKNOWLEDGED TO ME THAT THEY
EXECUTED THE SAME.
NOTARY PUBLIC _____ RESIDING AT _____
MY COMMISSION EXPIRES: _____

WEBER COUNTY ATTORNEY

THIS SUBDIVISION PLAT AND THE INSTRUMENTS ATTACHED HERETO, HAVE BEEN REVIEWED AND APPROVED FOR THE INSTALLATION OF THESE IMPROVEMENTS. THIS SUBDIVISION PLAT AND THE INSTRUMENTS ATTACHED HERETO, CONFORM WITH THE COUNTY ORDINANCES APPLICABLE THERETO AND NOW IN FORCE AND EFFECT.
SIGNED THIS _____ DAY OF _____, 2001.
SIGNATURE _____
WEBER COUNTY ENGINEER
THIS SUBDIVISION PLAT AND THE INSTRUMENTS ATTACHED HERETO, HAVE BEEN REVIEWED AND APPROVED FOR THE INSTALLATION OF THESE IMPROVEMENTS. THIS SUBDIVISION PLAT AND THE INSTRUMENTS ATTACHED HERETO, CONFORM WITH THE COUNTY ORDINANCES APPLICABLE THERETO AND NOW IN FORCE AND EFFECT.
SIGNED THIS _____ DAY OF _____, 2001.
SIGNATURE _____
WEBER COUNTY ENGINEER

WEBER COUNTY ENGINEER

THIS SUBDIVISION PLAT AND THE INSTRUMENTS ATTACHED HERETO, HAVE BEEN REVIEWED AND APPROVED FOR THE INSTALLATION OF THESE IMPROVEMENTS. THIS SUBDIVISION PLAT AND THE INSTRUMENTS ATTACHED HERETO, CONFORM WITH THE COUNTY ORDINANCES APPLICABLE THERETO AND NOW IN FORCE AND EFFECT.
SIGNED THIS _____ DAY OF _____, 2001.
SIGNATURE _____
WEBER COUNTY ENGINEER

WEBER COUNTY PLANNING COMMISSION APPROVAL

CHAIRMAN, WEBER COUNTY PLANNING COMMISSION _____
THIS SUBDIVISION PLAT AND THE INSTRUMENTS ATTACHED HERETO, HAVE BEEN REVIEWED AND APPROVED FOR THE INSTALLATION OF THESE IMPROVEMENTS. THIS SUBDIVISION PLAT AND THE INSTRUMENTS ATTACHED HERETO, CONFORM WITH THE COUNTY ORDINANCES APPLICABLE THERETO AND NOW IN FORCE AND EFFECT.
SIGNED THIS _____ DAY OF _____, 2001.
SIGNATURE _____
WEBER COUNTY ENGINEER

WEBER COUNTY ENGINEER

THIS SUBDIVISION PLAT AND THE INSTRUMENTS ATTACHED HERETO, HAVE BEEN REVIEWED AND APPROVED FOR THE INSTALLATION OF THESE IMPROVEMENTS. THIS SUBDIVISION PLAT AND THE INSTRUMENTS ATTACHED HERETO, CONFORM WITH THE COUNTY ORDINANCES APPLICABLE THERETO AND NOW IN FORCE AND EFFECT.
SIGNED THIS _____ DAY OF _____, 2001.
SIGNATURE _____
WEBER COUNTY ENGINEER

WEBER COUNTY ENGINEER

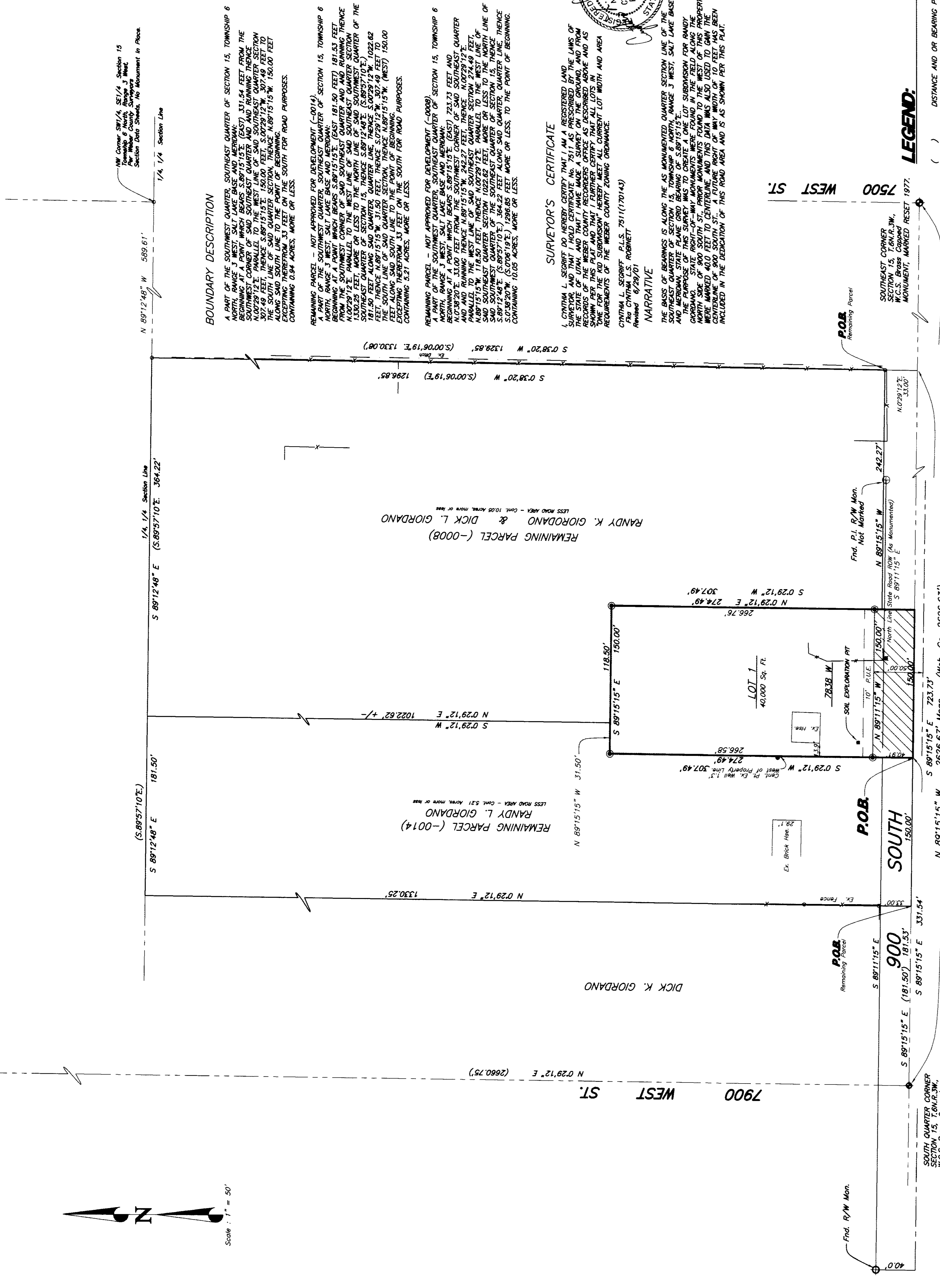
THIS SUBDIVISION PLAT AND THE INSTRUMENTS ATTACHED HERETO, HAVE BEEN REVIEWED AND APPROVED FOR THE INSTALLATION OF THESE IMPROVEMENTS. THIS SUBDIVISION PLAT AND THE INSTRUMENTS ATTACHED HERETO, CONFORM WITH THE COUNTY ORDINANCES APPLICABLE THERETO AND NOW IN FORCE AND EFFECT.
SIGNED THIS _____ DAY OF _____, 2001.
SIGNATURE _____
WEBER COUNTY ENGINEER

WEBER-MORGAN HEALTH DEPARTMENT

HEALTH DEPARTMENT SUPERVISOR _____
THIS SUBDIVISION PLAT AND THE INSTRUMENTS ATTACHED HERETO, HAVE BEEN REVIEWED AND APPROVED FOR THE INSTALLATION OF THESE IMPROVEMENTS. THIS SUBDIVISION PLAT AND THE INSTRUMENTS ATTACHED HERETO, CONFORM WITH THE COUNTY ORDINANCES APPLICABLE THERETO AND NOW IN FORCE AND EFFECT.
SIGNED THIS _____ DAY OF _____, 2001.
SIGNATURE _____
WEBER COUNTY ENGINEER

WEBER-MORGAN HEALTH DEPARTMENT

HEALTH DEPARTMENT SUPERVISOR _____
THIS SUBDIVISION PLAT AND THE INSTRUMENTS ATTACHED HERETO, HAVE BEEN REVIEWED AND APPROVED FOR THE INSTALLATION OF THESE IMPROVEMENTS. THIS SUBDIVISION PLAT AND THE INSTRUMENTS ATTACHED HERETO, CONFORM WITH THE COUNTY ORDINANCES APPLICABLE THERETO AND NOW IN FORCE AND EFFECT.
SIGNED THIS _____ DAY OF _____, 2001.
SIGNATURE _____
WEBER COUNTY ENGINEER



BOUNDARY DESCRIPTION

A PART OF THE SOUTHWEST QUARTER SECTION 15, TOWNSHIP 6 NORTH RANGE 3 WEST SALT LAKE MERIDIAN, BEARING AT A POINT WHICH BEARS S 89°15'15\"/>

REMAINING PARCEL RANDY L. GIORDANO (-004)
LESS ROAD AREA - Cont. 521 ACRES, MORE OR LESS.
N 02°29'12\"/>

REMAINING PARCEL RANDY K. GIORDANO & DICK L. GIORDANO (-008)
LESS ROAD AREA - Cont. 1028 ACRES, MORE OR LESS.
S 07°29'12\"/>

SURVEYORS CERTIFICATE

I, GUYTON L. SCOTT, DO HEREBY CERTIFY THAT I AM A REGISTERED LAND SURVEYOR AND THAT I HOLD CERTIFICATE NO. 7511 AS PRESCRIBED BY THE LAWS OF THE STATE OF UTAH AND THAT I HAVE PERSONALLY AND INDIVIDUALLY EXAMINED THIS PLAT AND THAT I BELIEVE THE ACCURACY OF THE SURVEY AND THE ACCURACY OF THE INFORMATION CONTAINED THEREON. I BELIEVE THE INFORMATION CONTAINED IN THIS PLAT TO BE TRUE AND CORRECT AND THAT THE INFORMATION CONTAINED THEREON IS IN ACCORDANCE WITH THE LAWS OF THE STATE OF UTAH.
GUYTON L. SCOTT, P.L.S. 7511(170143)
Registered 8/25/01

NARRATIVE

THE BASIS OF BEARINGS IS ALONG THE AS MONUMENTED QUARTER SECTION LINE OF THE 1/4, 1/4, 1/4, 1/4 SUBDIVISION FOR RANDY K. GIORDANO & DICK L. GIORDANO AND RANDY L. GIORDANO. THE MONUMENTS ARE AT THE CORNERS OF THE QUARTER SECTION. THE MONUMENTS ARE AT THE CORNERS OF THE QUARTER SECTION. THE MONUMENTS ARE AT THE CORNERS OF THE QUARTER SECTION.

LEGEND:

- () DISTANCE AND OR BEARING PER DEED OR PLAT.
- NO ADJUSTMENTS IS MEASURED DISTANCE OR BEARING ON DEED BEARING TO STATE PLAT AND BEARING.
- ** EXISTING FENCES.
- SET 2/8\"/>
- STREET DEDICATION - 2450 SO. FT.

NOTE:
AGRICULTURE IS THE PREFERRED USE IN THE AGRICULTURAL ZONES. PARTICULAR ZONE ARE PERMITTED AT ANY TIME INCLUDING THE OPERATION OF FARM MACHINERY AND NO ALLOWED AGRICULTURAL SHALL BE SUBJECT TO RESIDENTS OF THIS SUBDIVISION.

PREPARED BY:
C. L. S. INC.
810 CANYON ROAD
OROVILLE, UTAH 84004
PH. (801) 399-4335 Fax. (801) 627-1068

COUNTY RECORDER
ENTRY No. _____ FEE PAID _____
FILED FOR RECORD AND RECORDED: _____
IN BOOK _____ PAGE _____
OF ORIGINAL RECORDS: _____
RECORDED FOR: _____ 19 _____ AT _____
COUNTY RECORDER: _____
BY: _____

RECEIVED
MAR 18 04
Webber County Survey
2844