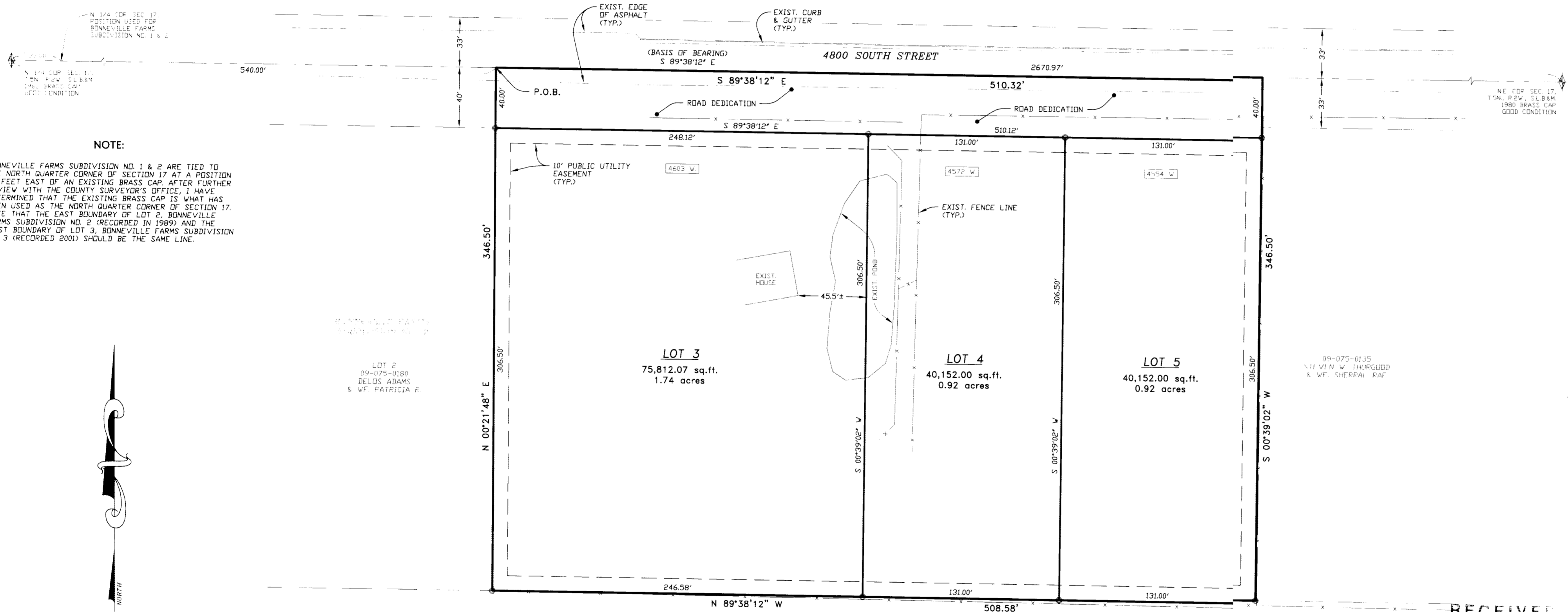


# RECORD OF SURVEY BONNEVILLE FARMS SUBDIVISION NO. 3

## A PART OF THE NORTHEAST QUARTER OF SECTION 17, T. 5 N., R. 2 W., S.L.B. & M. HOOPER CITY, WEBER COUNTY, UTAH



**NOTE:**  
BONNEVILLE FARMS SUBDIVISION NO. 1 & 2 ARE TIED TO THE NORTH QUARTER CORNER OF SECTION 17 AT A POSITION 33 FEET EAST OF AN EXISTING BRASS CAP. AFTER FURTHER REVIEW WITH THE COUNTY SURVEYOR'S OFFICE, I HAVE DETERMINED THAT THE EXISTING BRASS CAP IS WHAT HAS BEEN USED AS THE NORTH QUARTER CORNER OF SECTION 17. NOTE THAT THE EAST BOUNDARY OF LOT 2, BONNEVILLE FARMS SUBDIVISION NO. 2 (RECORDED IN 1999) AND THE WEST BOUNDARY OF LOT 3, BONNEVILLE FARMS SUBDIVISION NO. 3 (RECORDED 2001) SHOULD BE THE SAME LINE.

SCALE: 1" = 50'

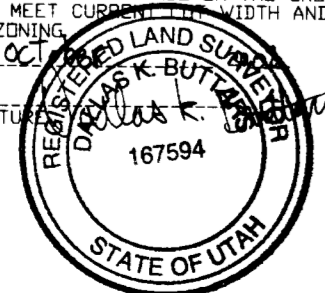
○ = 5/8" x 24" LENGTH REBAR WITH CAP STAMPED 167594

### SURVEYOR'S CERTIFICATE

I, DALLAS K. BUTTARS, A PROFESSIONAL LAND SURVEYOR IN THE STATE OF UTAH DO HEREBY CERTIFY THAT THIS PLAT OF BONNEVILLE FARMS SUBDIVISION NO. 3 IN WEBER COUNTY, UTAH, HAS BEEN CORRECTLY DRAWN TO SCALE AND IS A TRUE AND CORRECT REPRESENTATION OF THE FOLLOWING DESCRIPTION OF LANDS INCLUDED IN SAID SUBDIVISION, BASED ON DATA COMPILED FROM RECORDS IN THE WEBER COUNTY RECORDER'S OFFICE, WEBER COUNTY SURVEYOR'S OFFICE AND OF A SURVEY MADE ON THE GROUND, AND I FURTHER CERTIFY THAT ALL LOTS MEET CURB AND GUTTER WIDTH AND AREA REQUIREMENTS FOR HOOPER CITY ZONING.

SIGNED THIS 02 DAY OF OCTOBER 2002

R.L.S. # 167594



### BOUNDARY DESCRIPTION

A PART OF THE NORTHEAST QUARTER OF SECTION 17, TOWNSHIP 5 NORTH, RANGE 2 WEST, SALT LAKE BASE AND MERIDIAN, U.S. SURVEY, DESCRIBED AS FOLLOWS:  
BEGINNING AT A POINT SOUTH 89°38'12" EAST 540.00 FEET ALONG THE SECTION LINE FROM THE NORTH QUARTER CORNER OF SAID SECTION 17, AND RUNNING THENCE SOUTH 89°38'12" EAST 510.32 FEET ALONG SAID SECTION LINE; THENCE SOUTH 00°39'02" WEST 346.50 FEET; THENCE NORTH 89°38'12" WEST 308.50 FEET TO THE EAST LINE OF LOT 5, BONNEVILLE FARMS SUBDIVISION NO. 3; THENCE NORTH 00°21'48" EAST 346.50 FEET ALONG SAID EAST LINE TO THE POINT OF BEGINNING.  
CONTAINS 4.05 ACRES.

### NARRATIVE

THE PURPOSE OF THIS SURVEY WAS TO CREATE A THREE LOT SUBDIVISION AS SHOWN. BASIS OF BEARING IS UTAH STATE PLANE GRID BEARING ALONG THE SECTION LINE BETWEEN THE N. 1/4 CORNER AND THE NE. CORNER OF SECTION 17, T.5N., R.2W.

RECEIVED  
MAY 02 2002  
Weber County Survey

**LANDMARK SURVEYING AND ENGINEERING, INC.**  
A COMPLETE LAND DEVELOPMENT SERVICE  
4646 S. 3500 W. #A-3, ROY, UTAH 84067  
PHONE 801-731-4075

CLIENT: DELOS ADAMS 801-985-7074	
LOCATION: PART OF THE NE. 1/4 OF SEC. 17, T.5N., R.2W., S.L.B.&M.	
SURVEYED: SEP. 2000	
REVISIONS:	DRAWN BY: L.A.
10-04-01 L.A.	CHECKED BY: D.B.
10-17-01 L.A.	DATE: 10-19-00
	FILE: 22 11FINDWG

002876

002876