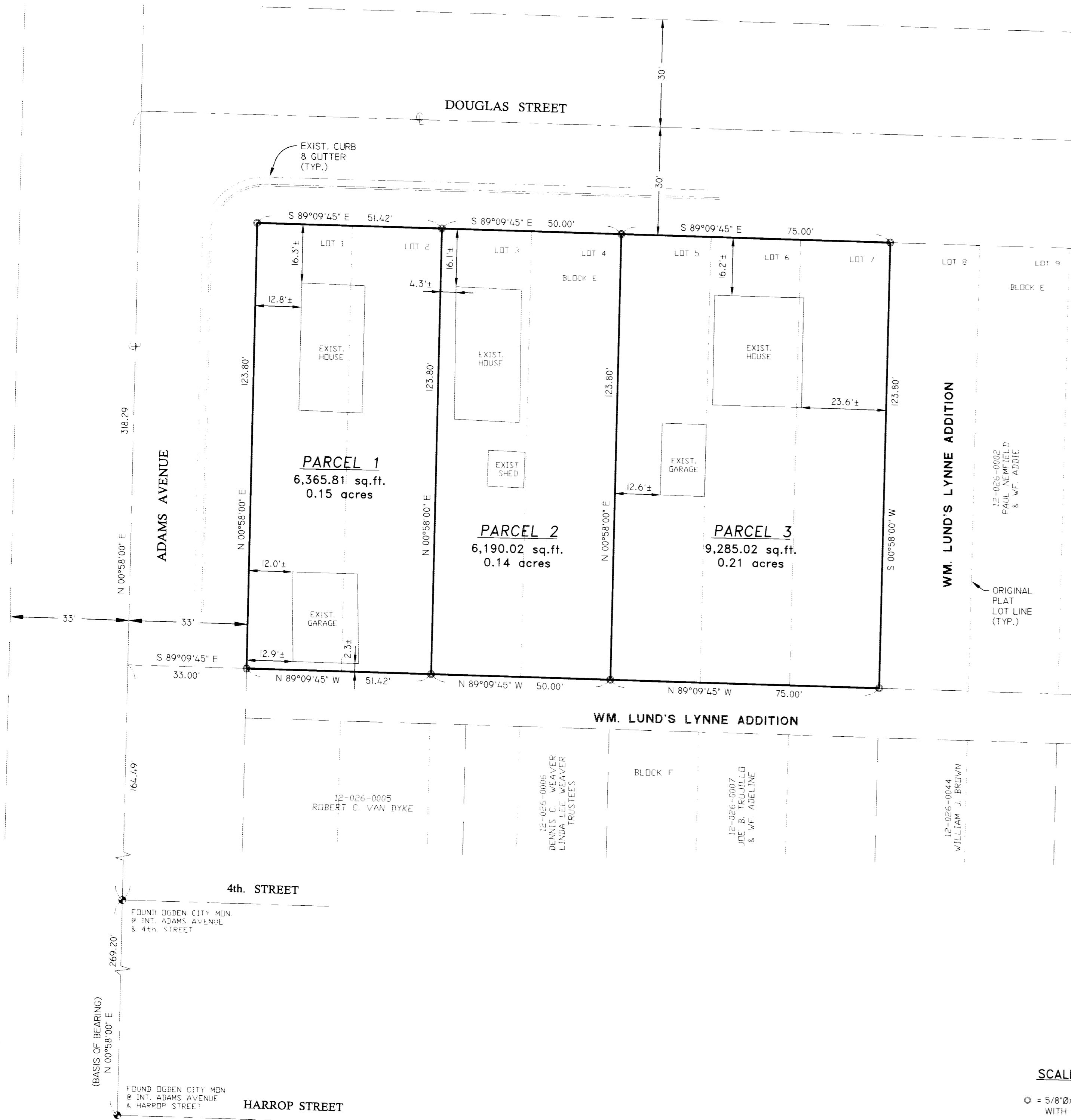


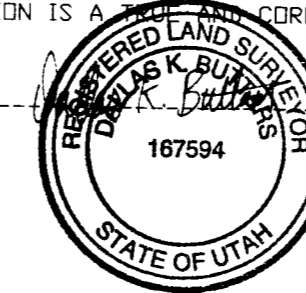
RECORD OF SURVEY
 PART OF THE N.W. 1/4 OF SECTION 16, T.6 N., R.1 W., S.L.B.&M.



SURVEYOR'S CERTIFICATE

I, DALLAS K. BUTTARS, A PROFESSIONAL LICENSED LAND SURVEYOR AS PRESCRIBED BY THE LAWS OF THE STATE OF UTAH AND HOLDING LICENSE NUMBER 167594 DO HEREBY CERTIFY THAT A SURVEY OF THE BELOW DESCRIBED PROPERTY HAS BEEN MADE BY MYSELF OR UNDER MY DIRECTION AND THE PLAT HEREON IS A TRUE AND CORRECT REPRESENTATION OF SAID SURVEY.

DATE: 2-01-02 SIGNED: _____



PARCEL 1 BOUNDARY DESCRIPTION

ALL OF LOTS 1 AND 2, BLOCK E, WM. LUND'S LYNNE ADDITION, OGDEN CITY, WEBER COUNTY, UTAH, ACCORDING TO THE OFFICIAL PLAT THEREOF.

PARCEL 2 BOUNDARY DESCRIPTION

ALL OF LOTS 3 AND 4, BLOCK E, WM. LUND'S LYNNE ADDITION, OGDEN CITY, WEBER COUNTY, UTAH, ACCORDING TO THE OFFICIAL PLAT THEREOF.

PARCEL 3 BOUNDARY DESCRIPTION

ALL OF LOTS 5, 6 AND 7, BLOCK E, WM. LUND'S LYNNE ADDITION, OGDEN CITY, WEBER COUNTY, UTAH, ACCORDING TO THE OFFICIAL PLAT THEREOF.

NARRATIVE

THE PURPOSE OF THIS SURVEY WAS TO SPLIT THE PARENT PARCEL INTO THREE (3) PARCELS AS SHOWN. BASIS OF BEARING IS OGDEN CITY STREET MONUMENTS BEARING.

RECEIVED

MAY 02 2002

LANDMARK SURVEYING AND ENGINEERING, INC.
 A COMPLETE LAND DEVELOPMENT SERVICE
 4646 S. 3500 W. #A-3, ROY, UTAH 84067
 PHONE 801-731-4075

CLIENT: KIM BEITELSPACHER
 LOCATION: PART OF THE N.W. 1/4 OF SEC. 16, T.6N., R.1W., S.L.B.&M.
 SURVEYED: JAN 2002

REVISIONS:	DRAWN BY: L.A.
	CHECKED BY: D.B.
	DATE: 02-01-02
	FILE: 2350RDS.DWG

SCALE: 1" = 20'
 O = 5/8"X24" LENGTH REBAR WITH CAP STAMPED 167594