

**RECORD OF SURVEY**  
**LARRY DALEY SUBDIVISION**  
 A PART OF THE N.W. 1/4 OF SECTION 21, T.5N., R.2W., S.L.B. & M.  
 ROY CITY, WEBER COUNTY, UTAH  
 JANUARY 2002



SCALE: 1" = 40'

○ = 1/4" = 5' (SEE NOTES)  
 CURB MARKS SHALL BE SET ON  
 EXTENSIONS OF LOT LINES.

**NARRATIVE**

THE PURPOSE OF THIS SURVEY WAS TO CREATE A TEN LOT PLANNING COMMISSION APPROVAL PLAT WITH A PLANNING COMMISSION APPROVAL PLAT BEARING ALONG THE 1/4 SECTION LINE BETWEEN T.5N., R.2W., S.L.B. & M.

**ROY CITY ENGINEER**

I HEREBY CERTIFY THAT THE REQUIREMENTS OF ALL APPLICABLE STATUTES AND ORDINANCES PRESENTED TO CITY ENGINEER HAVE BEEN COMPLIED WITH. SIGNING PART AND ENGINEERING FEE

SIGNED THIS \_\_\_\_\_ DAY OF \_\_\_\_\_ 20\_\_

**ROY CITY ATTORNEY**

I HEREBY CERTIFY THAT THE REQUIREMENTS OF ALL APPLICABLE STATUTES AND ORDINANCES PRESENTED TO CITY ENGINEER HAVE BEEN COMPLIED WITH. SIGNING PART AND ENGINEERING FEE

SIGNED THIS \_\_\_\_\_ DAY OF \_\_\_\_\_ 20\_\_

**ROY CITY PLANNING COMMISSION APPROVAL**

THIS IS TO CERTIFY THAT THE SUBDIVISION PLAT WAS ONLY MADE BY THE DAY OF \_\_\_\_\_ 20\_\_

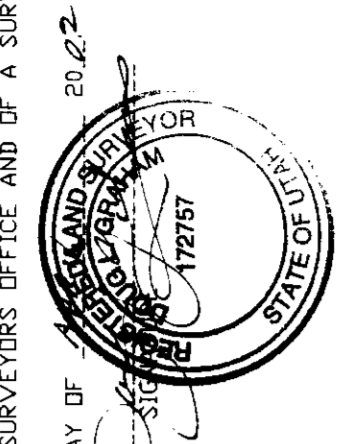
**ROY CITY ACCEPTANCE**

THIS IS TO CERTIFY THAT THIS SUBDIVISION PLAT, THE REDUCTION OF PUBLIC UTILITIES ASSOCIATED WITH THIS SUBDIVISION, THEREON ARE HEREBY APPROVED AND ACCEPTED BY THE CITY ENGINEER AND CITY ENGINEER.

SIGNED THIS \_\_\_\_\_ DAY OF \_\_\_\_\_ 20\_\_

**SURVEYOR'S CERTIFICATE**

I, JAMES L. GRAYSON, A PROFESSIONAL LAND SURVEYOR IN THE STATE OF UTAH, HAVE PERSONALLY EXAMINED THE RECORD OF SURVEY AND THE FIELD NOTES AND HAVE FOUND THEM TO BE A CORRECT REPRESENTATION OF THE FOLLOWING DESCRIPTION MADE BY ME OR BY A SURVEYOR UNDER MY SUPERVISION AND MADE ON THE GROUND. I HAVE ALSO EXAMINED THE RECORDS IN THE WEBER COUNTY RECORDS OFFICE AND OF A SURVEY MADE ON THE GROUND. I HAVE ALSO EXAMINED THE RECORDS IN THE WEBER COUNTY RECORDS OFFICE AND OF A SURVEY MADE ON THE GROUND. I HAVE ALSO EXAMINED THE RECORDS IN THE WEBER COUNTY RECORDS OFFICE AND OF A SURVEY MADE ON THE GROUND.



**OWNER'S DEDICATION**

WE, THE UNDERSIGNED OWNERS OF THE HEREIN DESCRIBED TRACT OF LAND BE HEREIN SET APART AND SUBDIVIDE THE SAME INTO LOTS AND STREETS AND DO HEREBY BEG, GRANT AND CONVEY TO THE CITY OF UTAH, WEBER COUNTY, UTAH, THE PUBLIC RIGHTS TO THE LOTS AND STREETS THE SAME TO BE USED AS PUBLIC HIGHWAYS, PARKS, AND UNDER THE LANDS DEDICATED ON THE PLAT AS PUBLIC UTILITIES, STORM WATER DRAINAGE AND DRAINAGE EXHIBITION. THE SAME TO BE USED FOR PUBLIC PURPOSES AND THE PUBLIC RIGHTS TO THE LOTS AND STREETS THE SAME TO BE USED FOR PUBLIC PURPOSES AND THE PUBLIC RIGHTS TO THE LOTS AND STREETS THE SAME TO BE USED FOR PUBLIC PURPOSES.

**ACKNOWLEDGMENT**

STATE OF UTAH, COUNTY OF WEBER, DAY OF \_\_\_\_\_ 20\_\_ PERSONALLY APPEARED \_\_\_\_\_ OF LEGAL AGE AND SOUND MIND, WHO HAS BEEN DULY ASKED TO MAKE THAT THEY SIGNED IT FREELY AND VOLUNTARILY AND FOR THE PURPOSES HEREIN EXPRESSED.

COMMISSION EXPENSES \_\_\_\_\_ NOTARY PUBLIC \_\_\_\_\_

**BOUNDARY DESCRIPTION**

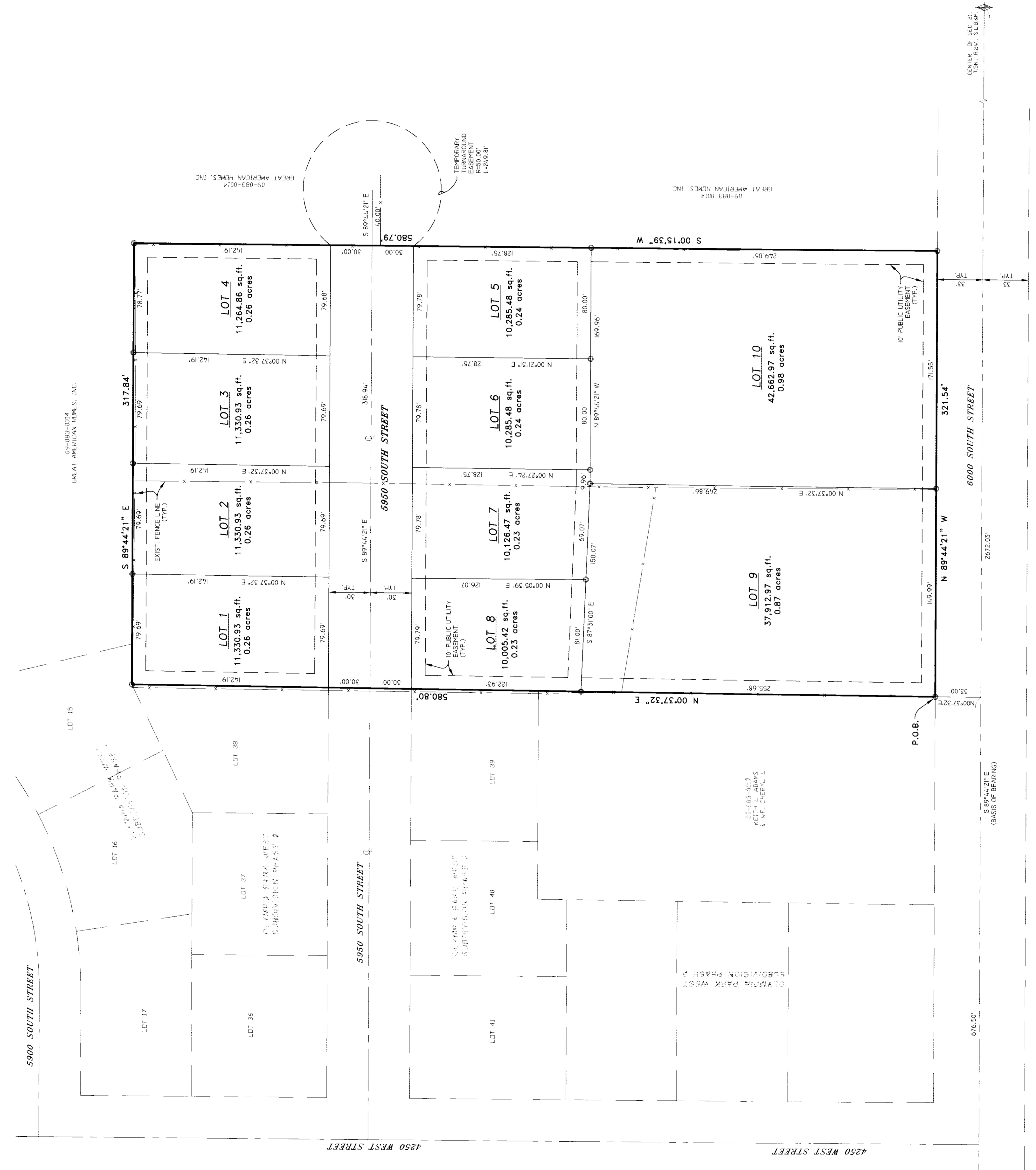
AS PER THE PLAT, SAID LOTS AND STREETS ARE TO BE USED AS PUBLIC HIGHWAYS, PARKS, AND UNDER THE LANDS DEDICATED ON THE PLAT AS PUBLIC UTILITIES, STORM WATER DRAINAGE AND DRAINAGE EXHIBITION. THE SAME TO BE USED FOR PUBLIC PURPOSES AND THE PUBLIC RIGHTS TO THE LOTS AND STREETS THE SAME TO BE USED FOR PUBLIC PURPOSES AND THE PUBLIC RIGHTS TO THE LOTS AND STREETS THE SAME TO BE USED FOR PUBLIC PURPOSES.

**NOTE:**

UTAH SPACE FINISHED ELEVATIONS LIMITED TO A MAXIMUM OF 1" BELOW TOP BACK OF CURB (TBO) ELEVATION.

**RECEIVED**

MAY 02 2002  
 Weber County Survey



**LANDMARK SURVEYING AND ENGINEERING, INC.**  
 464 S. 2500 W. #4-3, BOX 1044, BOONVILLE, UT 84007  
 PHONE 801-731-4079

CLIENT: BAILEY CONSTRUCTION  
 LOCATION: PART OF THE N.W. 1/4 OF SEC. 21, T5N., R2W., S.L.B. & M.  
 SURVEYED: AUGUST 2001

DRAWN BY: L.A.  
 CHECKED BY: B.G.  
 DATE: 11-19-01  
 FILE: 2887NDVJ

WEBER COUNTY RECORDER  
 ENTRY # \_\_\_\_\_ FEE \_\_\_\_\_  
 FILED FOR RECORD & RECORDED  
 THIS \_\_\_\_\_ DAY OF \_\_\_\_\_ 20\_\_  
 AT \_\_\_\_\_ IN BOOK \_\_\_\_\_ OF \_\_\_\_\_  
 PAGE \_\_\_\_\_  
 BY \_\_\_\_\_ DEPUTY