

002894

Northwest corner, Section 29
(Found 2" x 2" Brass Cap)
grounded in 1944

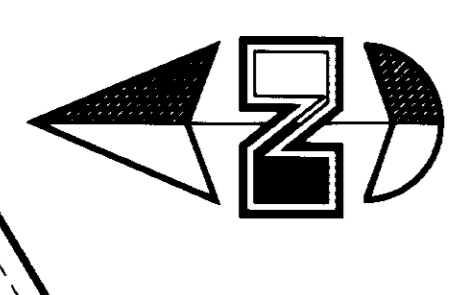
S 89°57'00" W
S 45°12'59" E
477.75'
N 89°11'07" W
407.10' Plat (406.97' meas.)
Found 1/2" rebar
461.00' Plat (338.96' meas.)
Found 1/2" rebar

495
Contains 2.52 acres

494

Private Right of Way
Oak
S 89°28'45" E
39.84'
S 89°15'42" E
205.86'
A = 48°15'42"
P = 334.90'
L = 284.50'
T = 148.71'
Set independent
of survey
10' Utility Easement

Private Right of Way
Oak
S 80°04'26" E
121.08'
S 43°19'30" E
22.67'
A = 141°08'38"
R = 28.91'
L = 71.21'
T = 81.96'
10' Utility Easement



Scale: 1" = 40'
LEGEND
● Found 1/2" rebar
○ Set 5/8" rebar (24" long) cap
(Previous set 7" North - at edge of gravel road)
○ Set 5/8" rebar (24" long) cap
(Previous set 7" North - at edge of gravel road)

493

492

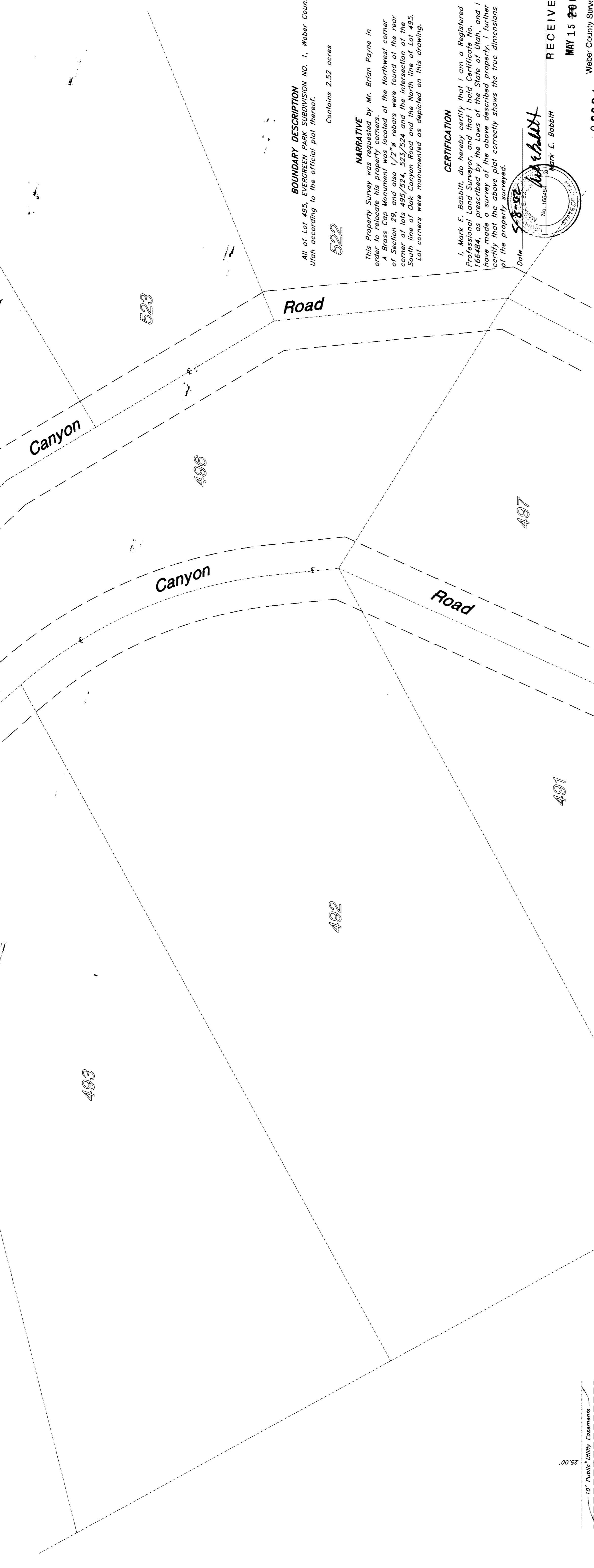
491

497

496

523

524



Road

Canyon

Canyon

Road

522
Contains 2.52 acres

NARRATIVE
This Property Survey was requested by Mr. Brian Payne in order to relocate his property corners. The Northwest corner of Section 29, and also 1/2" x 2" rebar were found at the rear corner of lots 495/524, 523/524 and the intersection of the South line of Oak Canyon Road and the North line of Lot 495. Lot corners were monumented as depicted on this drawing.

CERTIFICATION
I, Mark E. Babbitt, do hereby certify that I am a Registered Professional Land Surveyor, and that I hold Certificate No. 10000. I have made a survey of the above described property, I further certify that the above plat correctly shows the true dimensions of the property surveyed.

Date: 5-8-02
Mark E. Babbitt
No. 10000
Weber County Surveyor

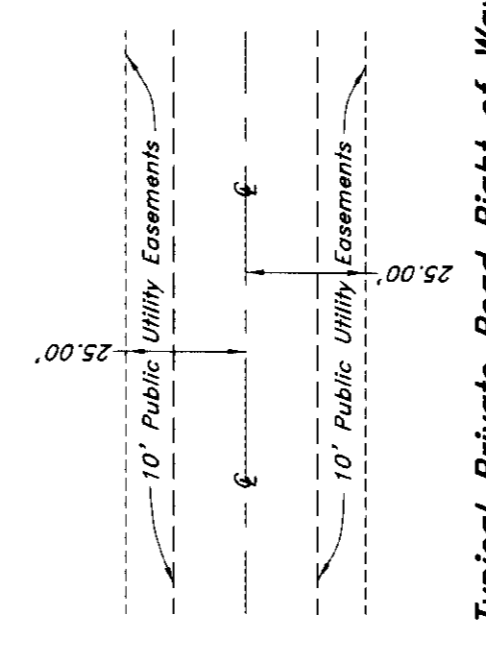
RECEIVED
MAY 15 2002
Weber County Surveyor

Property Survey

GREAT BASIN ENGINEERING NORTH
4774 South 1300 West - Suite 102
P.O. Box 10000
Provo, Utah 84602-8415
Phone: (801) 224-4415 Fax: (801) 224-4422

Scale: 1" = 40'
Drawn: ESI
Reviewed: 000M412V
Date: APR 24 APR 2000
Sheet No. 1

Brian Payne
A part of the Northwest 1/4 of Section 29 and the Northeast 1/4 of Section 29, T17N, R10E, S288M, U.S. Survey, Lot 495, DEER CREEK PLAIN SUBDIVISION in Weber County, Utah



Typical Private Road Right of Way

02894

02894

02894

02894