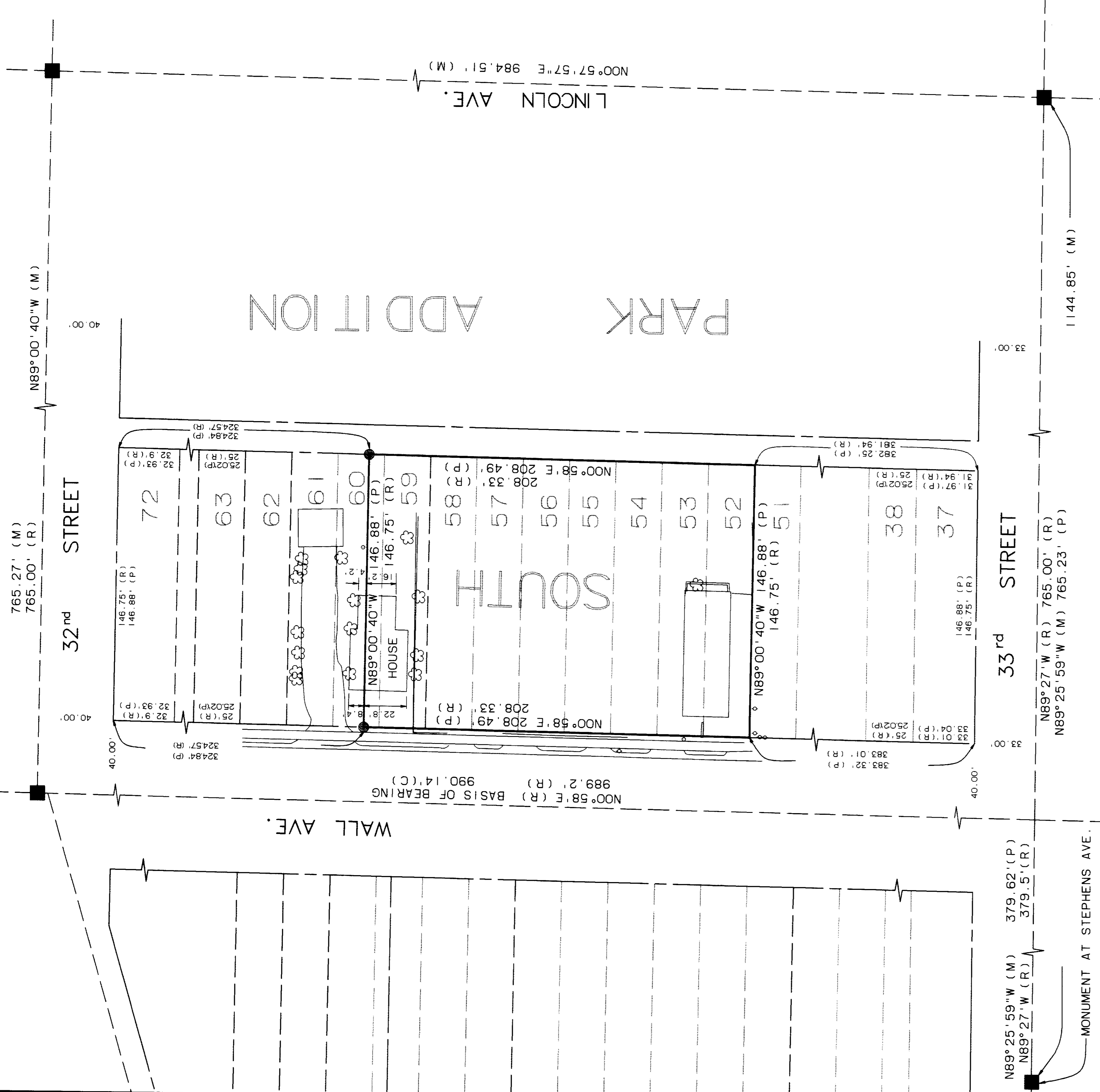


LOCATED IN THE NW 1/4 OF SEC. 5, T.5N., R.1W., S.L.B.&M.
& THE SW 1/4 OF SEC. 32, T.6N., R.1W., S.L.B.&M.

02895



SURVEYOR'S CERTIFICATE

I, Kirk Peter Morgan, do hereby certify that I am a registered land surveyor and that I hold certificate number 171201, as prescribed by the laws of the State of Utah, and that under my direction a survey has been made of the following described property recorded as Entry No. 1514760 in Book 1901 at Page 1139 in the office of the Weber County Recorder:

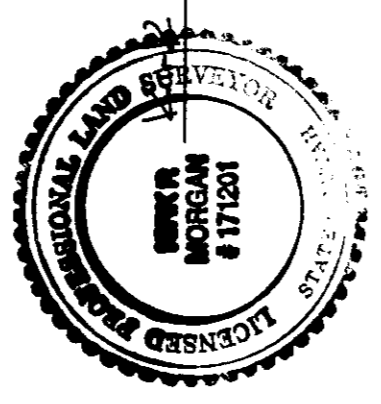
ALL OF LOT 59, AND THE SOUTH 8 1/3 FEET OF LOT 60, BLOCK 2, SOUTH PARK ADDITION, OGDEN CITY, WEBER COUNTY, UTAH, ACCORDING TO THE OFFICIAL PLAT THEREOF.

Also: recorded as Entry No. 1433839 in Book 1829 at Page 1160 in the office of the Weber County Recorder:

PARCEL 1: ALL OF LOTS 52 TO 55, INCLUSIVE, BLOCK 2 SOUTH PARK ADDITION, OGDEN CITY, WEBER COUNTY, UTAH, ACCORDING TO THE OFFICIAL PLAT THEREOF.

PARCEL 2: ALL OF LOT 56, BLOCK 2, SOUTH PARK ADDITION, OGDEN CITY, WEBER COUNTY, UTAH, ACCORDING TO THE OFFICIAL PLAT THEREOF.

PARCEL 3: ALL OF LOTS 57 AND 58, BLOCK 2, SOUTH PARK ADDITION, OGDEN CITY, WEBER COUNTY, UTAH, ACCORDING TO THE OFFICIAL PLAT THEREOF.



Date 2/12/2022
Kirk Peter Morgan
Utah License No. 171201

NARRATIVE

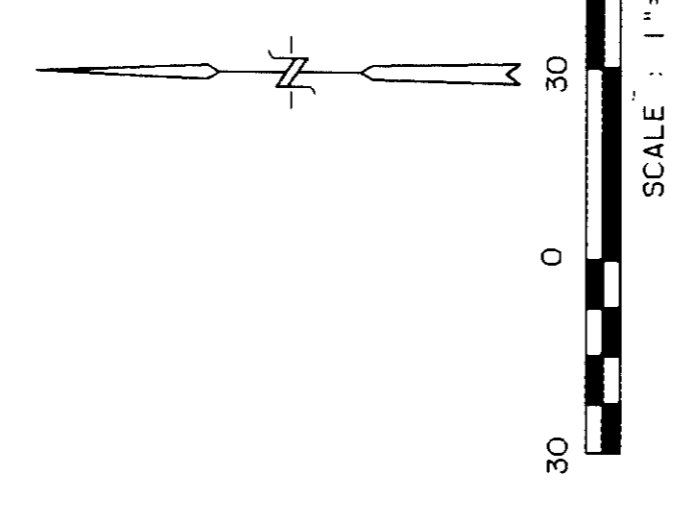
The purpose of this survey is to resurvey a tract of land in an existing subdivision in order to establish the location of the northerly boundary line of said tract on the ground. Ogdan city monuments were recovered, as shown on this plat. The location of the monument at Wall Ave. and 33rd Street was established using a single proportion between the monuments at 33rd Street and Stephens Ave. and Lincoln Ave. The basis of bearing for this survey is N00° 58' E along the monument line in Wall Ave., as shown on the Ogdan City Engineer's drawing No. 2701. The lots within the subdivision were then prorated and the northerly boundary line of the tract was staked on the ground accordingly.

LEGEND

- FOUND: OGDEN CITY MONUMENT
- SET 5/8" REBAR WITH ALUMINUM CAP STAMPED "ESI ENGINEERING"
- (R) INDICATES RECORD BEARING OR DISTANCE FROM OGDEN CITY ENGINEER'S DRAWING.
- (M) INDICATES BEARING OR DISTANCE MEASURED BY ESI ENGINEERING.
- (P) INDICATES PRORATED DISTANCE.
- (C) INDICATES CALCULATED DISTANCE.

RECEIVED
MAY 31 2002
Weber County Surveyor

02895



REVISION	DATE	BY	DESCRIPTION

DESIGN	KPM

RECORD OF SURVEY PLAT
3260 WALL AVE.
OGDEN, UTAH

D&M AUTOMOTIVE
3260 WALL AVE.
OGDEN, UTAH



ESI ENGINEERING
CONSULTING ENGINEERS AND LAND SURVEYORS
3500 SOUTH MAIN STREET SUITE 206
SALT LAKE CITY, UTAH 84115
(801) 288-1782

SHEET 1 OF 1
PROJECT NO. 02-006

02895

02895

02895

02895