

SURVEYOR'S CERTIFICATE
 I, RANDALL A. WILFORD, DEPOSE AND SAY THAT I AM A LICENSED PROFESSIONAL LAND SURVEYOR, HOLDING UTAH LICENSE NUMBER 159437. THE SURVEY HEREIN DESCRIBED WAS PERFORMED BY ME OR UNDER MY DIRECTION AND THAT THIS PLAN CORRECTLY DEPICTS THE FINDINGS OF THAT SURVEY.
 SIGNED THIS 3rd DAY OF JULY 2002 AT SALT LAKE CITY, UTAH.
 RANDALL A. WILFORD
 SURVEYOR
 UTAH LICENSE NUMBER 159437

THE BASIS OF RECORDS FOR THIS SURVEY IS THE UTM COORDINATE SYSTEM WITH THE SOUTH QUARTER CORNER AND THE SOUTHWEST QUARTER CORNER OF SECTION 17, T.7N., R.1E., S.L.B.M. AS INSTRUMENTED BY MERSON AS 1887-2425 W.

PARAGRAPHS
 THE PURPOSE OF THIS SURVEY WAS TO DETERMINE THE LIMITS OF THE BAILEY PROPERTY. THE BOUNDARY OF SAID PROPERTY IS BASED ON THE 1984 SURVEY OF SAID PROPERTY BY SAID SURVEYOR. THE 1984 SURVEY WAS MADE BY SAID SURVEYOR IN ACCORDANCE WITH THE UTAH SURVEYING ACT AND THE UTAH DEPARTMENT OF HERITAGE AND ARTS. THE 1984 SURVEY WAS MADE BY SAID SURVEYOR IN ACCORDANCE WITH THE UTAH SURVEYING ACT AND THE UTAH DEPARTMENT OF HERITAGE AND ARTS. THE 1984 SURVEY WAS MADE BY SAID SURVEYOR IN ACCORDANCE WITH THE UTAH SURVEYING ACT AND THE UTAH DEPARTMENT OF HERITAGE AND ARTS.

BOUNDARY DESCRIPTION
 PART OF THE SOUTHWEST QUARTER OF SECTION 18, TOWNSHIP 7 NORTH, RANGE 1 EAST, SALT LAKE BASIN AND MOUNTAIN, U.S. SURVEY, BEGINNING 129.5 FEET SOUTH OF THE 860.0 FEET, THENCE WEST 120 FEET TO THE TRUE POINT OF BEGINNING, RUNNING 492.8 FEET, THENCE NORTH 82.0 FEET, THENCE WEST 261.1 FEET, THENCE NORTH 82.4 FEET, THENCE NORTH 124.7 FEET, THENCE SOUTH 115.0 FEET TO THE POINT OF BEGINNING.

REVISIONS
 1. _____
 2. _____
 3. _____
 4. _____
 5. _____
 6. _____

RECORD OF SURVEY
 REEVE & ASSOCIATES, INC.
 ENGINEERS, PLANNERS & SURVEYORS
 3670 QUINCY AVE., SUITE 101
 SALT LAKE CITY, UTAH 84119
 (801) 621-3100 FAX (801) 621-2666
 TOLL-FREE 1-888-484-5100

RECEIVED
 AUG 19 02
 Noble County Surveyor
 002923

THESE PLANS AND SPECIFICATIONS ARE THE PROPERTY OF REEVE & ASSOC., INC., 3670 QUINCY AVE., OGDEN, UTAH, 84403 AND SHALL NOT BE COPIED OR REDUCED OR REPRODUCED WITHOUT THEIR WRITTEN PERMISSION.

BAILEY PROPERTIES
 S.E. 1/4 OF SEC. 18, S. 1/4 OF SEC. 17, T.7N., R.1E., S.L.B.M. & M. OF SEC. 1, LIBERTY DISTRICT, NEBER, COUNTY, UTAH
 FEBRUARY, 1986

RECORD OF SURVEY

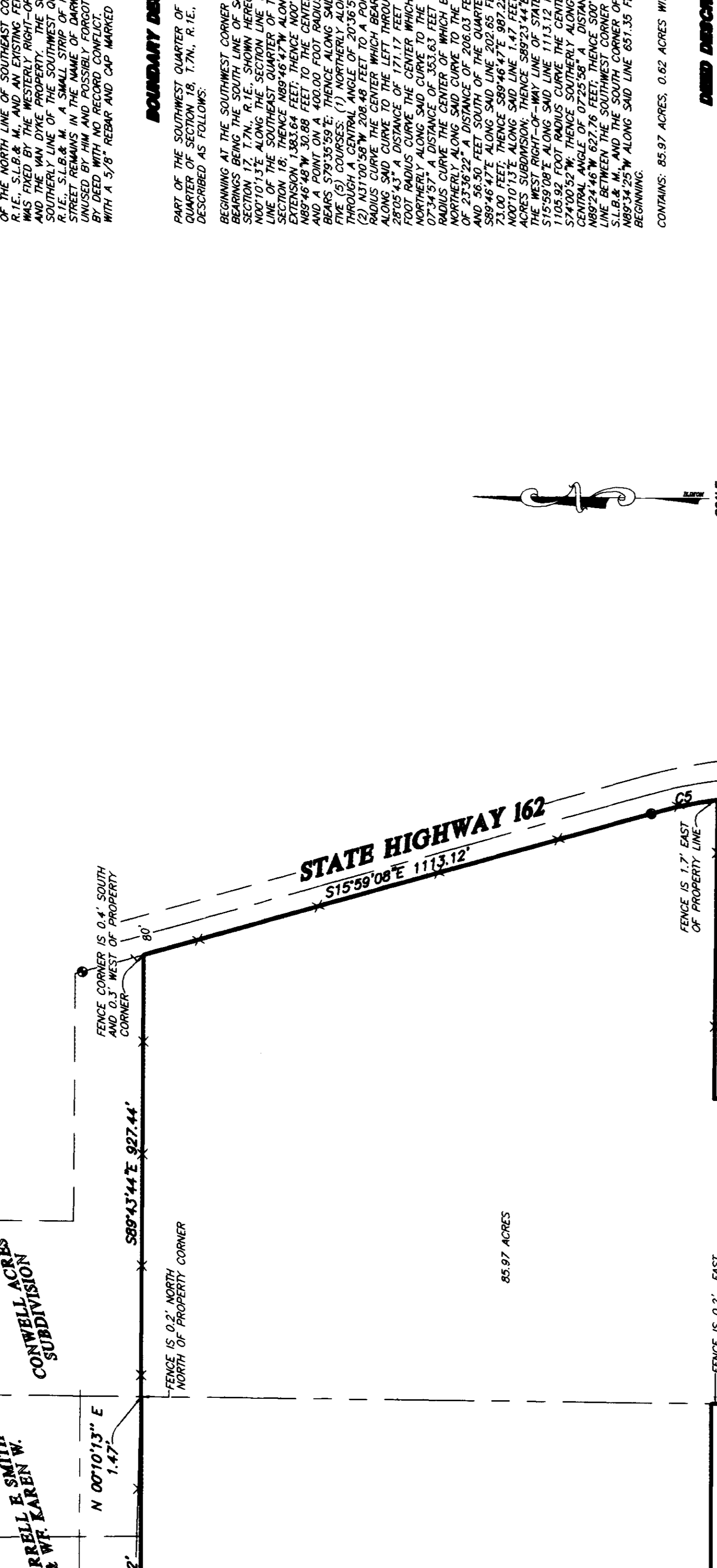
RECORD OF SURVEY

RECORD OF SURVEY

RECORD OF SURVEY

RECORD OF SURVEY

RECORD OF SURVEY



CURVE INFORMATION

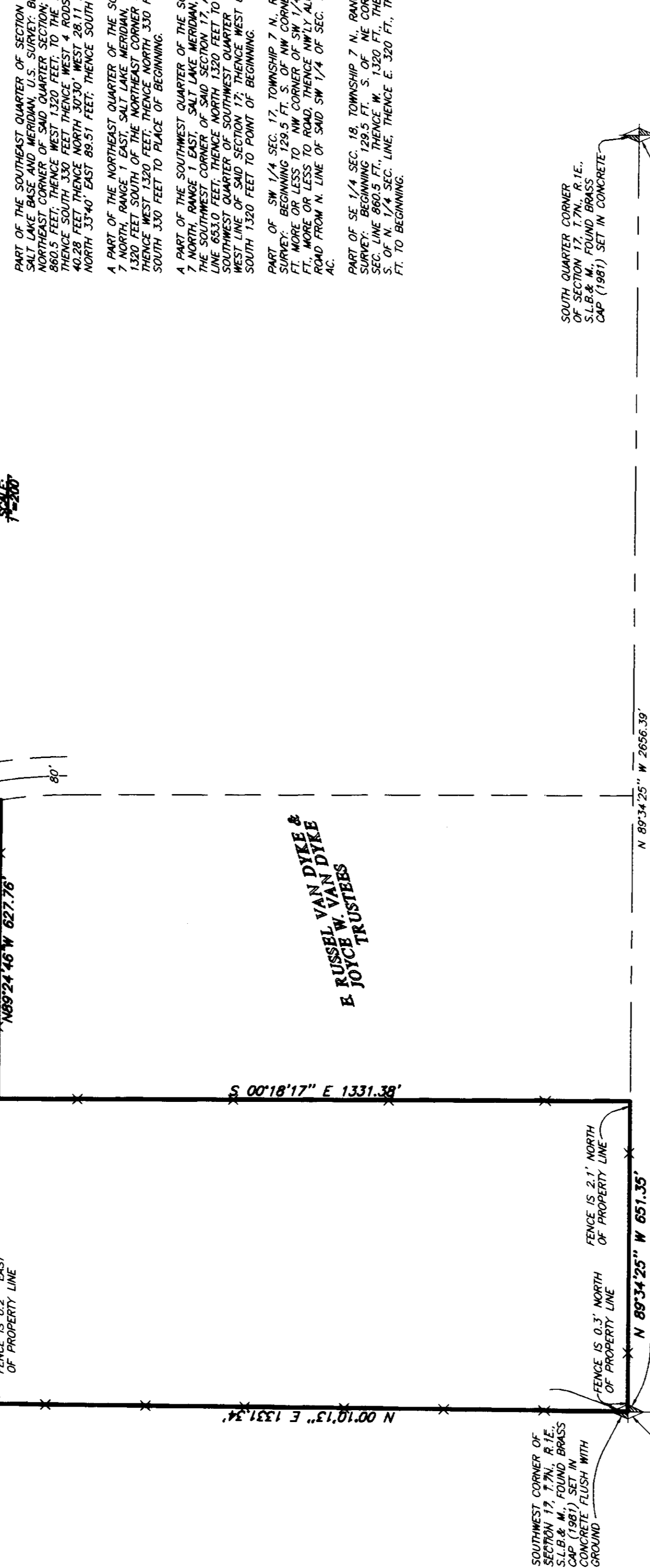
STATION	CHORD	CHORD BEARING	CHORD DISTANCE	CHORD BEARING	CHORD DISTANCE
1	107.00	S 89°46'47" W	1363.64	S 89°46'47" W	1363.64
2	107.00	S 89°46'47" W	1363.64	S 89°46'47" W	1363.64
3	107.00	S 89°46'47" W	1363.64	S 89°46'47" W	1363.64
4	107.00	S 89°46'47" W	1363.64	S 89°46'47" W	1363.64
5	107.00	S 89°46'47" W	1363.64	S 89°46'47" W	1363.64
6	107.00	S 89°46'47" W	1363.64	S 89°46'47" W	1363.64

LEGEND
 - SETBACK PROPERTY BOUNDARY AS NOTED HEREON
 - FOUND RIGHT-OF-WAY MONUMENT
 - EXISTING FENCE LINE

ADDITIONAL NOTES:
 PART OF THE SOUTHWEST QUARTER OF SECTION 18, TOWNSHIP 7 NORTH, RANGE 1 EAST, SALT LAKE BASIN AND MOUNTAIN, U.S. SURVEY, BEGINNING 129.5 FEET SOUTH OF THE 860.0 FEET, THENCE WEST 120 FEET TO THE TRUE POINT OF BEGINNING, RUNNING 492.8 FEET, THENCE NORTH 82.0 FEET, THENCE WEST 261.1 FEET, THENCE NORTH 82.4 FEET, THENCE NORTH 124.7 FEET, THENCE SOUTH 115.0 FEET TO THE POINT OF BEGINNING.

ADDITIONAL NOTES:
 CONTAINS 85.97 ACRES, 0.62 ACRES WITHIN 2000 EAST STREET

002923



CURVE INFORMATION

STATION	CHORD	CHORD BEARING	CHORD DISTANCE	CHORD BEARING	CHORD DISTANCE
1	107.00	S 89°46'47" W	1363.64	S 89°46'47" W	1363.64
2	107.00	S 89°46'47" W	1363.64	S 89°46'47" W	1363.64
3	107.00	S 89°46'47" W	1363.64	S 89°46'47" W	1363.64
4	107.00	S 89°46'47" W	1363.64	S 89°46'47" W	1363.64
5	107.00	S 89°46'47" W	1363.64	S 89°46'47" W	1363.64
6	107.00	S 89°46'47" W	1363.64	S 89°46'47" W	1363.64

LEGEND
 - SETBACK PROPERTY BOUNDARY AS NOTED HEREON
 - FOUND RIGHT-OF-WAY MONUMENT
 - EXISTING FENCE LINE

ADDITIONAL NOTES:
 PART OF THE SOUTHWEST QUARTER OF SECTION 18, TOWNSHIP 7 NORTH, RANGE 1 EAST, SALT LAKE BASIN AND MOUNTAIN, U.S. SURVEY, BEGINNING 129.5 FEET SOUTH OF THE 860.0 FEET, THENCE WEST 120 FEET TO THE TRUE POINT OF BEGINNING, RUNNING 492.8 FEET, THENCE NORTH 82.0 FEET, THENCE WEST 261.1 FEET, THENCE NORTH 82.4 FEET, THENCE NORTH 124.7 FEET, THENCE SOUTH 115.0 FEET TO THE POINT OF BEGINNING.

ADDITIONAL NOTES:
 CONTAINS 85.97 ACRES, 0.62 ACRES WITHIN 2000 EAST STREET

002923



CURVE INFORMATION

STATION	CHORD	CHORD BEARING	CHORD DISTANCE	CHORD BEARING	CHORD DISTANCE
1	107.00	S 89°46'47" W	1363.64	S 89°46'47" W	1363.64
2	107.00	S 89°46'47" W	1363.64	S 89°46'47" W	1363.64
3	107.00	S 89°46'47" W	1363.64	S 89°46'47" W	1363.64
4	107.00	S 89°46'47" W	1363.64	S 89°46'47" W	1363.64
5	107.00	S 89°46'47" W	1363.64	S 89°46'47" W	1363.64
6	107.00	S 89°46'47" W	1363.64	S 89°46'47" W	1363.64

LEGEND
 - SETBACK PROPERTY BOUNDARY AS NOTED HEREON
 - FOUND RIGHT-OF-WAY MONUMENT
 - EXISTING FENCE LINE

ADDITIONAL NOTES:
 PART OF THE SOUTHWEST QUARTER OF SECTION 18, TOWNSHIP 7 NORTH, RANGE 1 EAST, SALT LAKE BASIN AND MOUNTAIN, U.S. SURVEY, BEGINNING 129.5 FEET SOUTH OF THE 860.0 FEET, THENCE WEST 120 FEET TO THE TRUE POINT OF BEGINNING, RUNNING 492.8 FEET, THENCE NORTH 82.0 FEET, THENCE WEST 261.1 FEET, THENCE NORTH 82.4 FEET, THENCE NORTH 124.7 FEET, THENCE SOUTH 115.0 FEET TO THE POINT OF BEGINNING.

ADDITIONAL NOTES:
 CONTAINS 85.97 ACRES, 0.62 ACRES WITHIN 2000 EAST STREET

002923