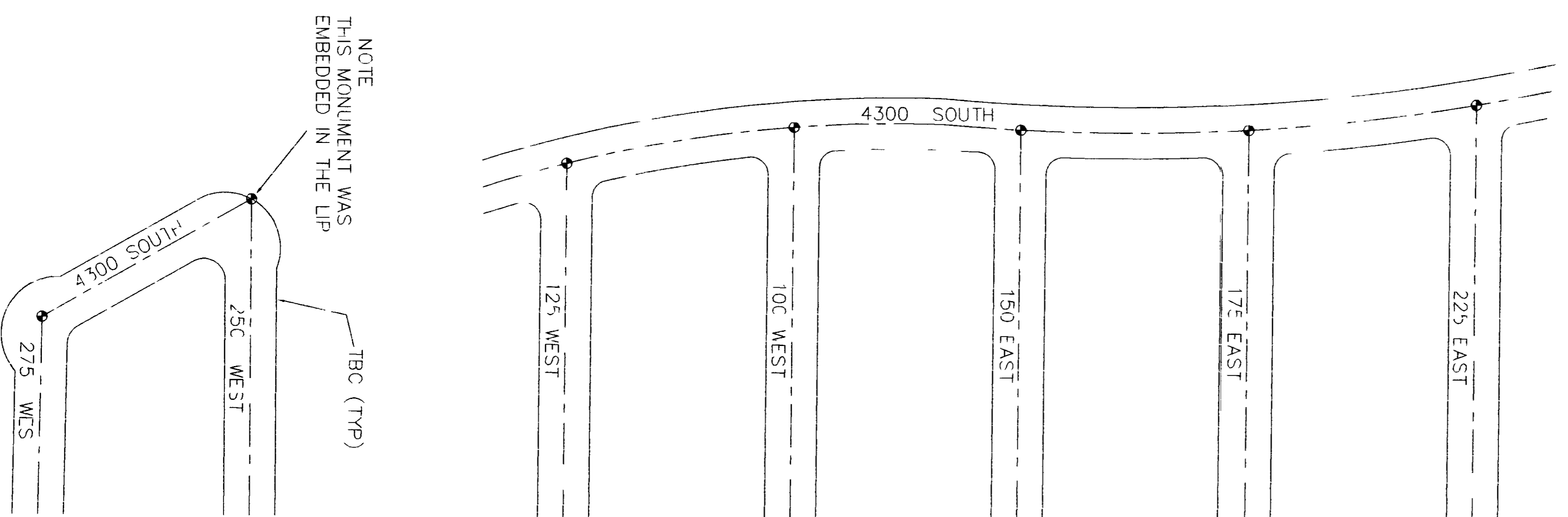


RECORD OF SURVEY CENTERLINE MONUMENTATION FOR WASHINGTON TERRACE CITY

NOVEMBER 2002

002969



I, DICK N. MECHEM, DO HEREBY CERTIFY THAT I AM A PROFESSIONAL LAND SURVEYOR OF THE STATE OF UTAH. LICENSE NUMBER 155649 AND THAT THIS MAP IS A TRUE AND COMPLETE REPRESENTATION OF A SURVEY MADE BY ME AT THE REQUEST OF WASHINGTON TERRACE CITY AND IN BEHALF OF MTWEST SURVEYING & MAPPING INC. ALL MONUMENTS SHOWN HEREON ARE OF THE CHARACTER AND OCCUPY THE POSITIONS INDICATED AND ARE SUFFICIENT TO ENABLE THE SURVEY TO BE RETRACED.

SURVEYOR'S CERTIFICATE

DATE: 11/15/02

NARRATIVE AND STATEMENT OF PURPOSE
THIS SURVEY WAS PERFORMED FOR THE PURPOSE OF REESTABLISHING THE LOCATION OF CENTERLINE MONUMENTS ON WASHINGTON TERRACE CITY 2002 STREET PROJECTS. ALL STREETS HAVE BEEN RECONSTRUCTED BY THE CITY. THESE LOCATIONS WERE DETERMINED BY SURVEY PRIOR TO CONSTRUCTION. BRASS MONUMENTS WERE STAMPED AS SHOWN AS PER WASHINGTON TERRACE CITY SPECIFICATION.

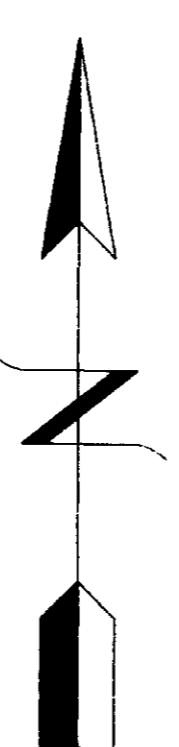
NOTE
MONUMENTS WERE NOT CONSTRUCTED BY WINWEST SURVEYING AND MAPPING INC

BRASS (AP DETAIL)



• LOCATION OF MONUMENTS

Scale 1"=100'



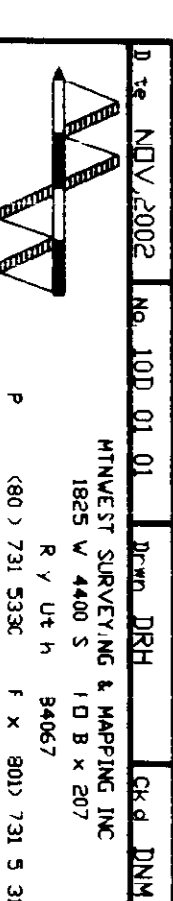
RECEIVED
NOV 09 2002
Weber County Surveyor

RECORD OF SURVEY
for

WASHINGTON TERRACE CITY

L & T d i i Section 8

T = 5th S North R = 9 West S.L.B.M.



002969
0000