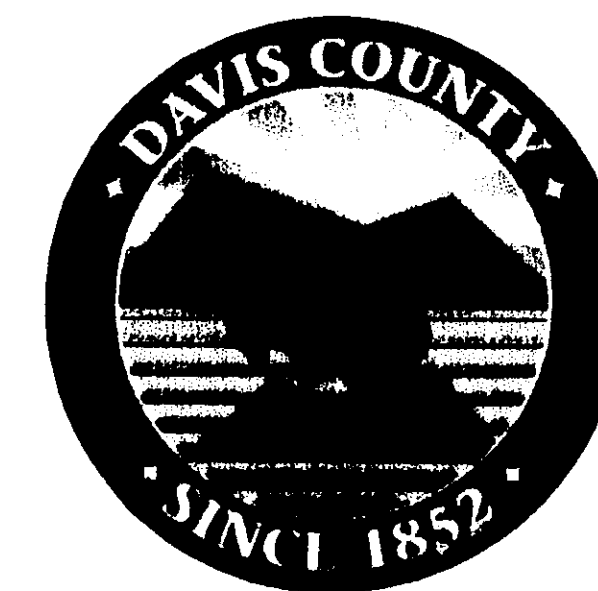


DECLARATION OF COUNTY LINE COMMON TO WEBER COUNTY AND DAVIS COUNTY, UTAH

LOCATED IN SECTIONS 23 & 24 T5N,R3W AND SECTIONS 19,
20, 21, 22, 23 & 24 T5N,R2W AND SECTIONS 19, 20, 21, 25, 26
27 & 28 T5N,R1W AND SECTIONS 29 & 30 T5N,R1E, SLB & M
OCTOBER, 2002
SHEET 1 of 5

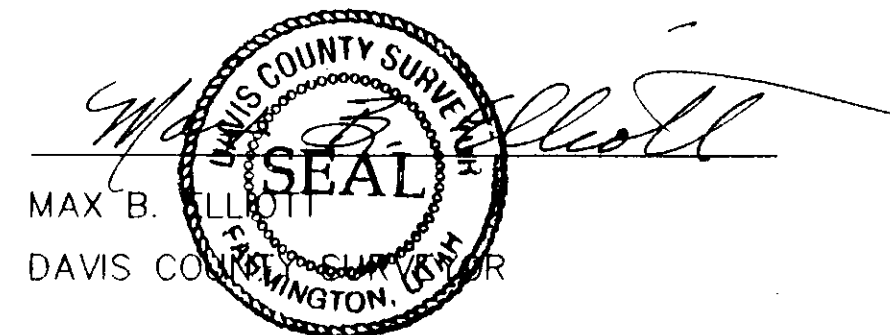
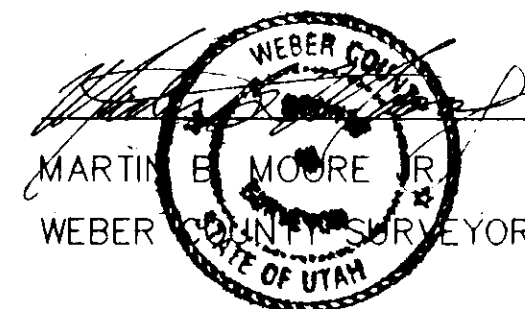
NARRATIVE

THE PURPOSE OF THIS PLAT IS TO RE-CONSTRUCT THE COMMON BOUNDARY BETWEEN WEBER AND DAVIS COUNTIES, BASED ON A SURVEY CONDUCTED BY THE COUNTY SURVEYORS OF BOTH WEBER AND DAVIS COUNTIES IN THE YEAR 1894. THE POSITION OF THE COUNTY LINE HAS BEEN RE-CONSTRUCTED BASED ON FOUND MONUMENTATION AND OLD SURVEY RECORDS. THE BASIS OF BEARINGS AND HORIZONTAL CONTROL IS THE HARN NAD 1983, UTAH STATE PLANE COORDINATE SYSTEM, NORTH ZONE. DISTANCES AND BEARINGS ARE SHOWN FROM EXISTING MONUMENTATION IN BOTH COUNTIES.



COUNTY SURVEYOR'S CERTIFICATE

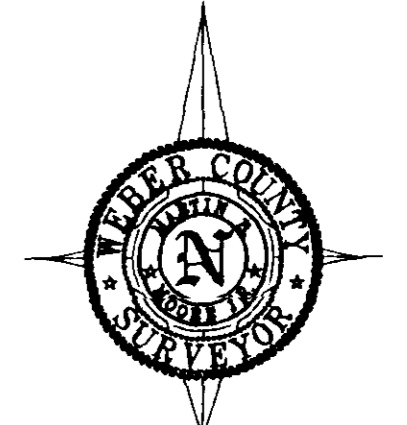
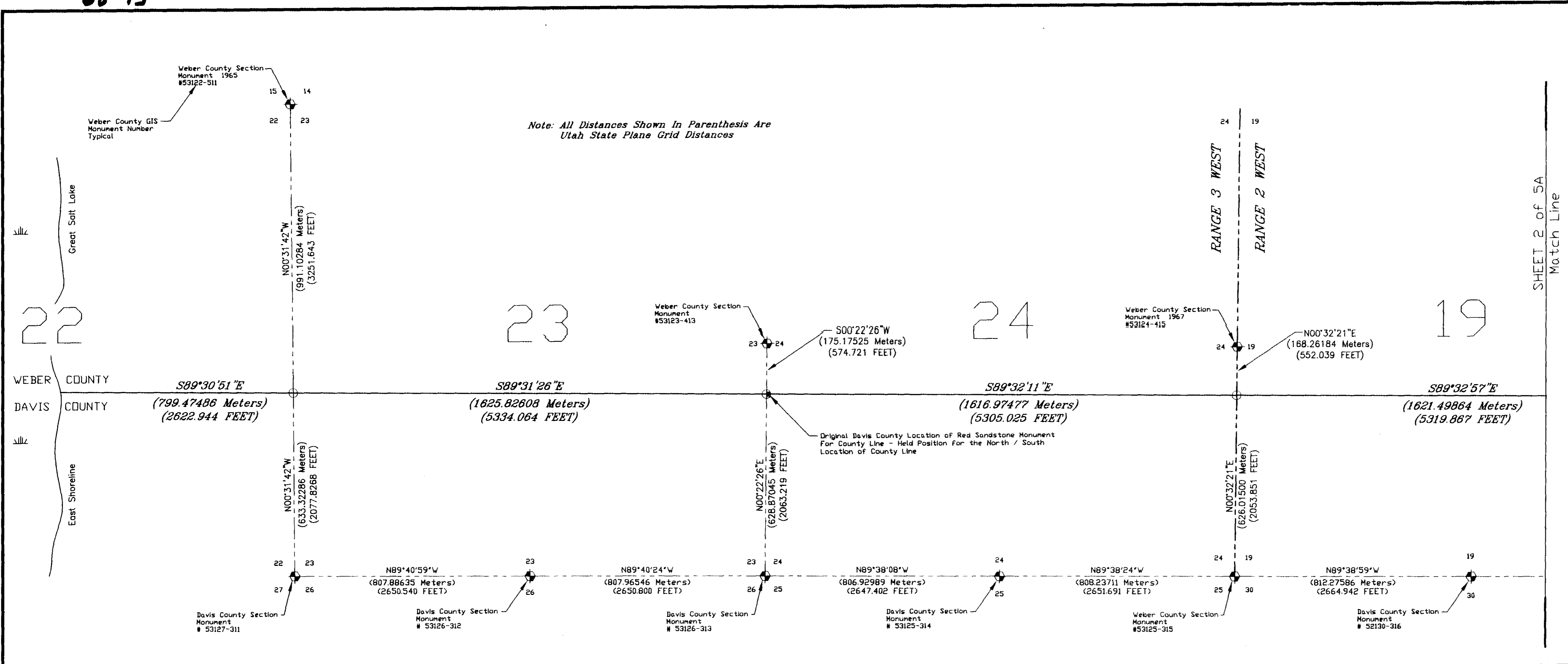
THIS IS TO CERTIFY THAT WE, THE UNDERSIGNED COUNTY SURVEYORS, DO HEREBY CERTIFY THAT THIS PLAT IS AN ACCURATE RETRACEMENT OF THE SURVEY CONDUCTED IN 1894 BY THE SURVEYORS OF WEBER AND DAVIS COUNTIES, AND IS THE ACTUAL AND LEGAL BOUNDARY BETWEEN SAID COUNTIES BASED ON UTAH STATUTE 17-50-204. THIS CERTIFICATION IS TO THE BEST OF OUR KNOWLEDGE AND BELIEF.



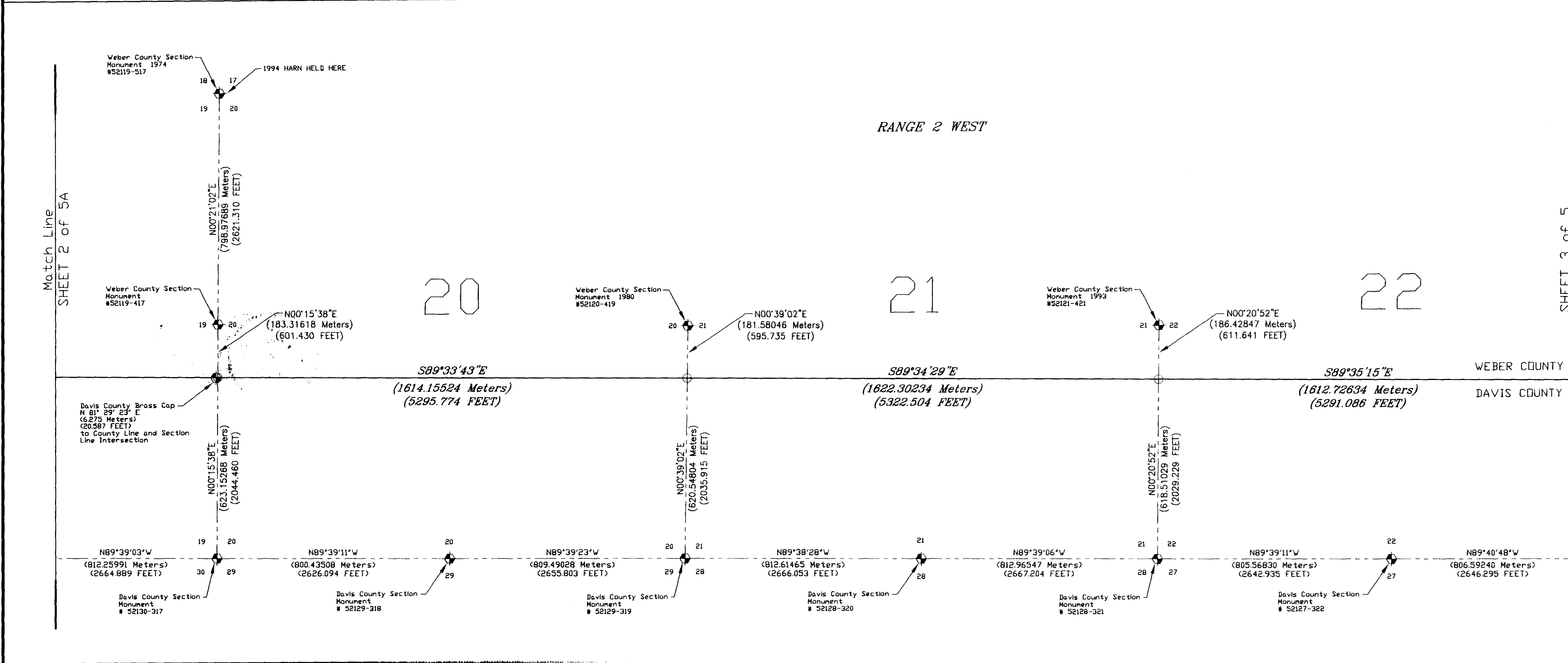
JAN 28 2003

2993

WEBER COUNTY RECORDER
ENTRY NO. 1885946 FEE PAID
\$0.00 FILED FOR RECORD AND
RECORDED 31-OCT-02 AT
1:01 PM IN BOOK 516 OF OFFICIAL
RECORDS, PAGES 88-92. RECORDED
FOR WEBER COUNTY SURVEYOR
Della Coats
WEBER COUNTY RECORDER
By: Buelin Kitta
DEPUTY



SCALE 1"=200 Meters



JAN 9 2003

**DECLARATION OF COUNTY LINE
COMMON TO WEBER
AND DAVIS COUNTY, UTAH**

RUNNING THRU SECTIONS 23 & 24, T5N,R3W, AND SECTIONS 19, 20, 21, 22, 23 & 24, T5N,R2W, AND SECTIONS 19, 20, 21, 25, 26, 27 & 28, T5N,R1W, AND SECTIONS 29 & 30, T5N,R1E, SLB & M.

Surveyed By
Weber County Surveyor
Davis County Surveyor

SURVEY DATE September 18, 2000
Plot Prepared By
Scott Mendoza
GIS Technician

DRAWING DATE October 20, 2002
Approved for Filing By
M. Moore
Weber County Surveyor

APPROVAL DATE October 24, 2002
SHEET NO. 2 OF 5

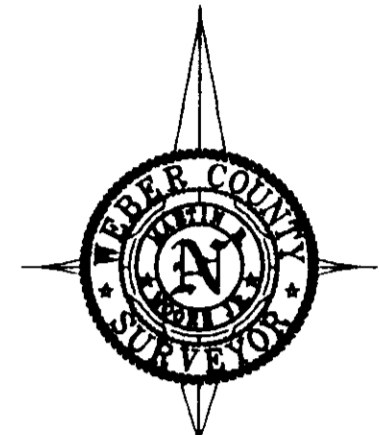
02993
SURVEY FILING NUMBER

RECORD INFORMATION

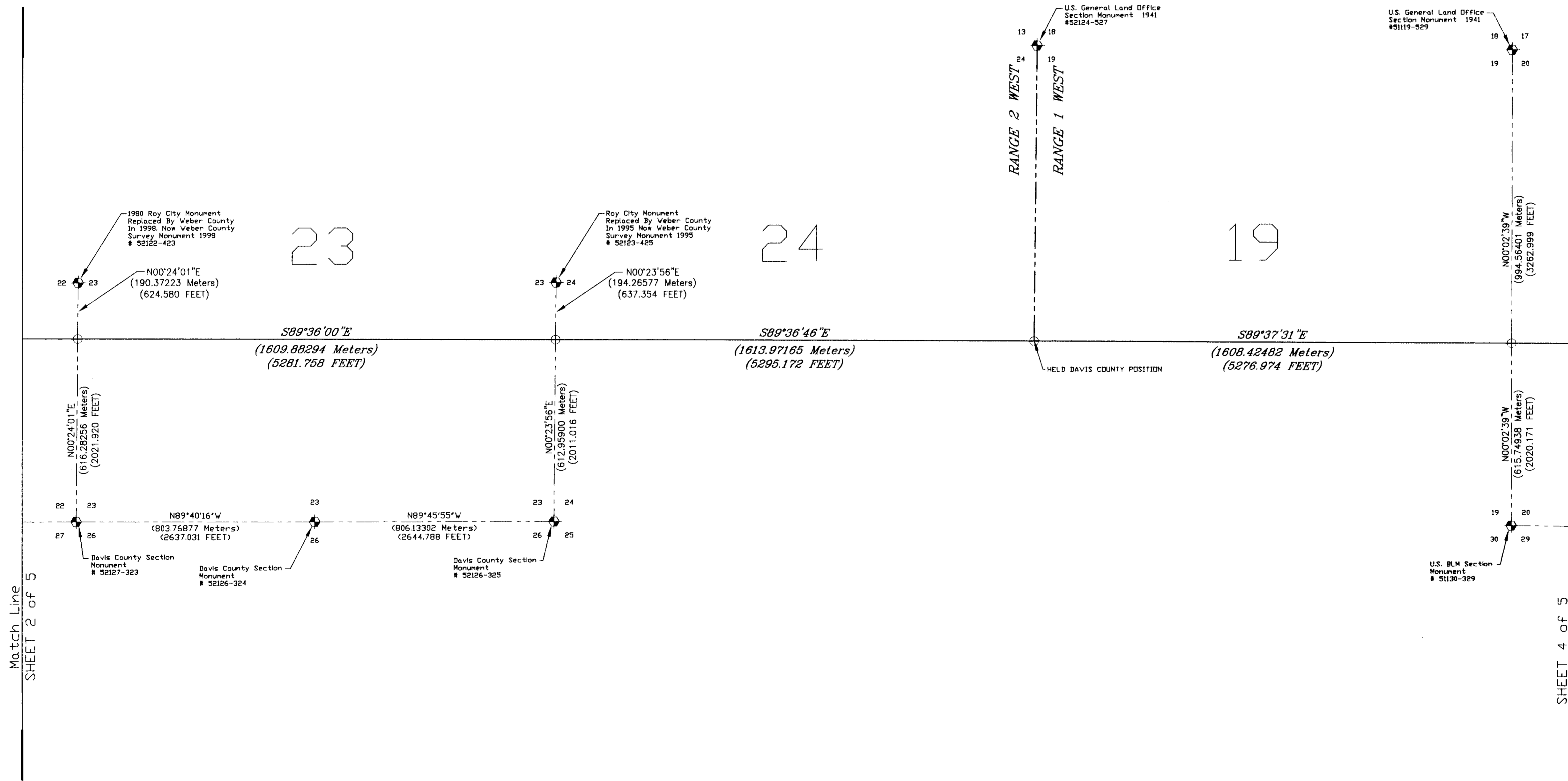
BOOK: 56
PAGE NO: 88-92
ENTRY NO: 1885748

WEBER COUNTY SURVEYING
Martin E. Moore Jr.
Weber County Surveyor
Ernest D. Rowley, Chief Deputy
2380 Washington Blvd. Rm 260
Ogden, Utah 84401
(801) 694 8333

Note: All Distances Shown in Parenthesis Are Utah State Plane Grid Distances



SCALE 1"=200 Meters



JAN 15 2003

**DECLARATION OF COUNTY LINE
COMMON TO WEBER
AND DAVIS COUNTY, UTAH**

RUNNING THRU SECTIONS 23 & 24, T5N,R3W, AND SECTIONS 19, 20, 21, 22, 23 & 24, T5N,R2W, AND SECTIONS 19, 20, 21, 25, 26, 27 & 28, T5N,R1W, AND SECTIONS 29 & 30, T5N,R1E, SLB & M.

Surveyed By
Weber County Surveyor
Davis County Surveyor

SURVEY DATE September 18, 2000

Plot Prepared By
Scott Mendoza
GIS Technician

DRAWING DATE October 20, 2002

Approved for Filing By
M. Moore
Weber County Surveyor

APPROVAL DATE October 24, 2002

SHEET NO. 3 OF 5

002993
SURVEY FILING NUMBER



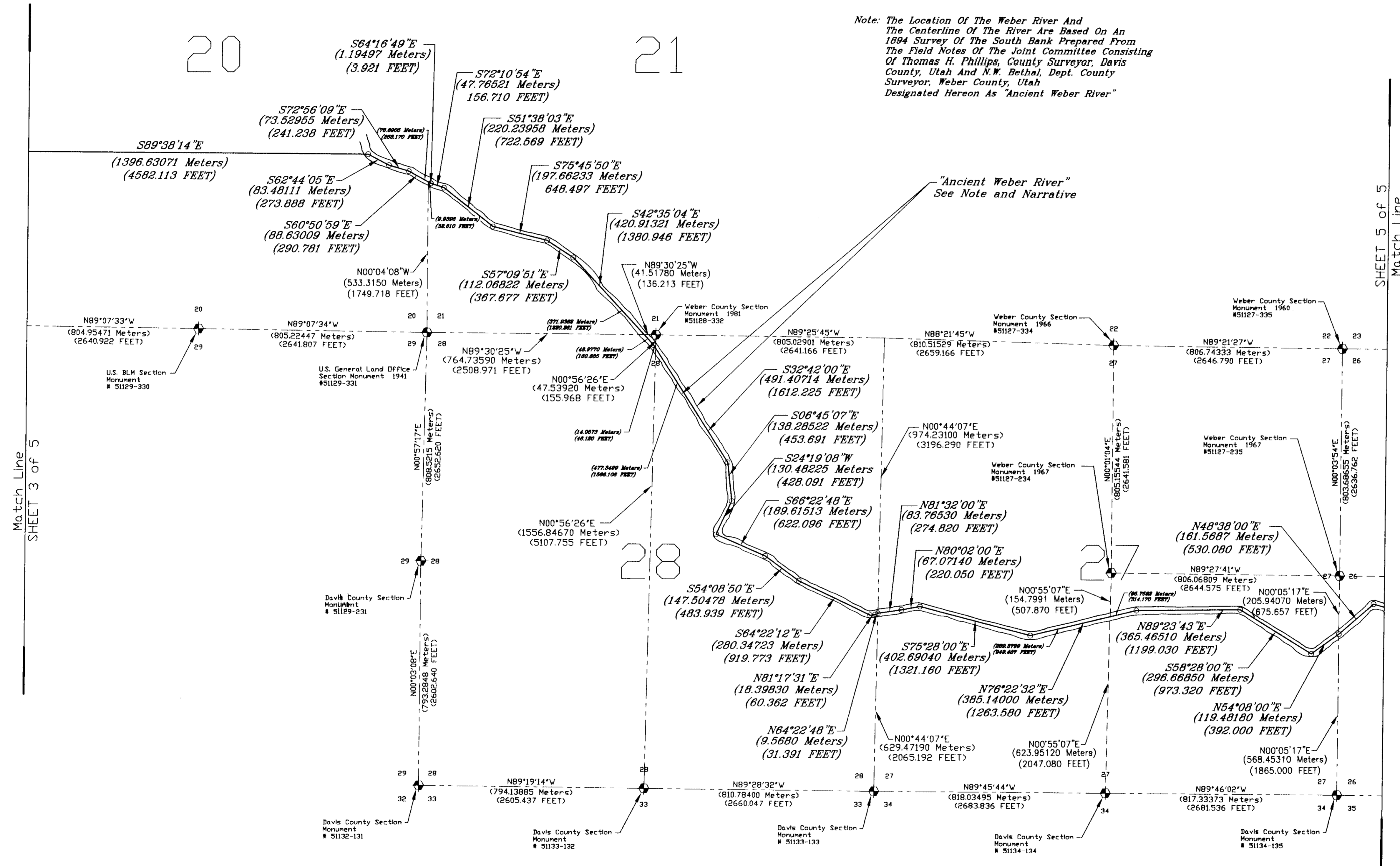
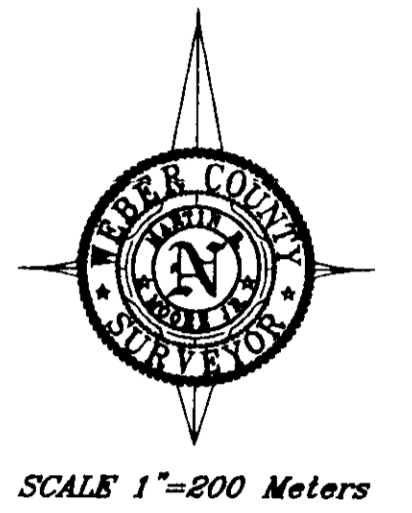
**WEBER COUNTY
SURVEYING**
Martin B. Moore Jr.
Weber County Surveyor
Ernest D. Rowley, Chief Deputy
2380 Washington Blvd. Rm 260
Ogden, Utah 84401
(801) 399-8020
FAX (801) 399-8316

RECORD INFORMATION

BOOK: 56
PAGE NO: 88-92
ENTRY NO: 1885946

Note: All Distances Shown In Parenthesis Are Utah State Plane Grid Distances

Note: The Location Of The Weber River And The Centerline Of The River Are Based On An 1894 Survey Of The South Bank Prepared From The Field Notes Of The Joint Committee Consisting Of Thomas H. Phillips, County Surveyor, Davis County, Utah And N.W. Bethal, Dept. County Surveyor, Weber County, Utah Designated Hereon As "Ancient Weber River"



Match Line SHEET 3 of 5

SHEET 5 of 5 Match Line

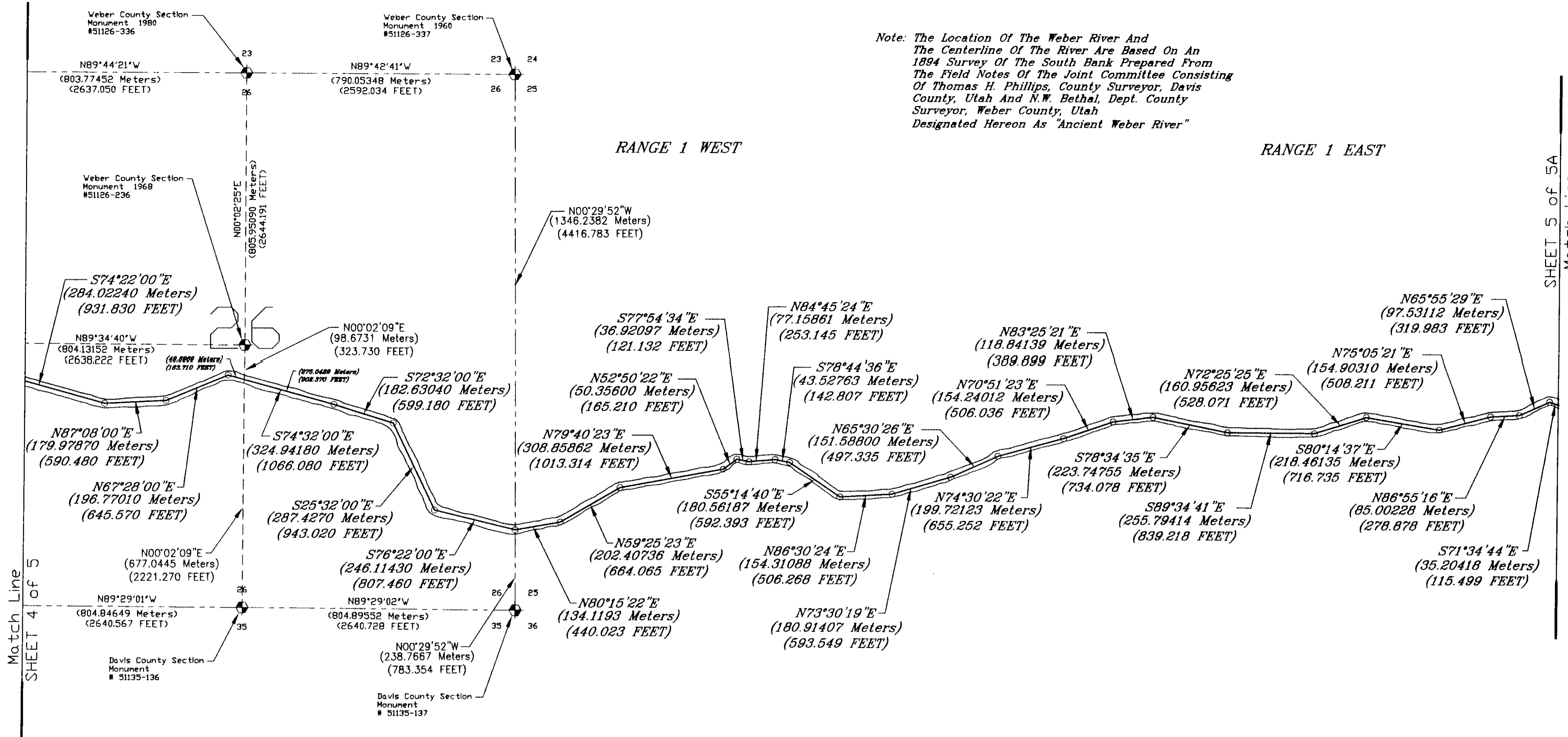
DECLARATION OF COUNTY LINE COMMON TO WEBER AND DAVIS COUNTY, UTAH

RUNNING THRU SECTIONS 23 & 24, T5N,R3W, AND SECTIONS 19, 20, 21, 22, 23 & 24, T5N,R2W, AND SECTIONS 19, 20, 21, 25, 26, 27 & 28, T5N,R1W, AND SECTIONS 29 & 30, T5N,R1E, SLB & M.

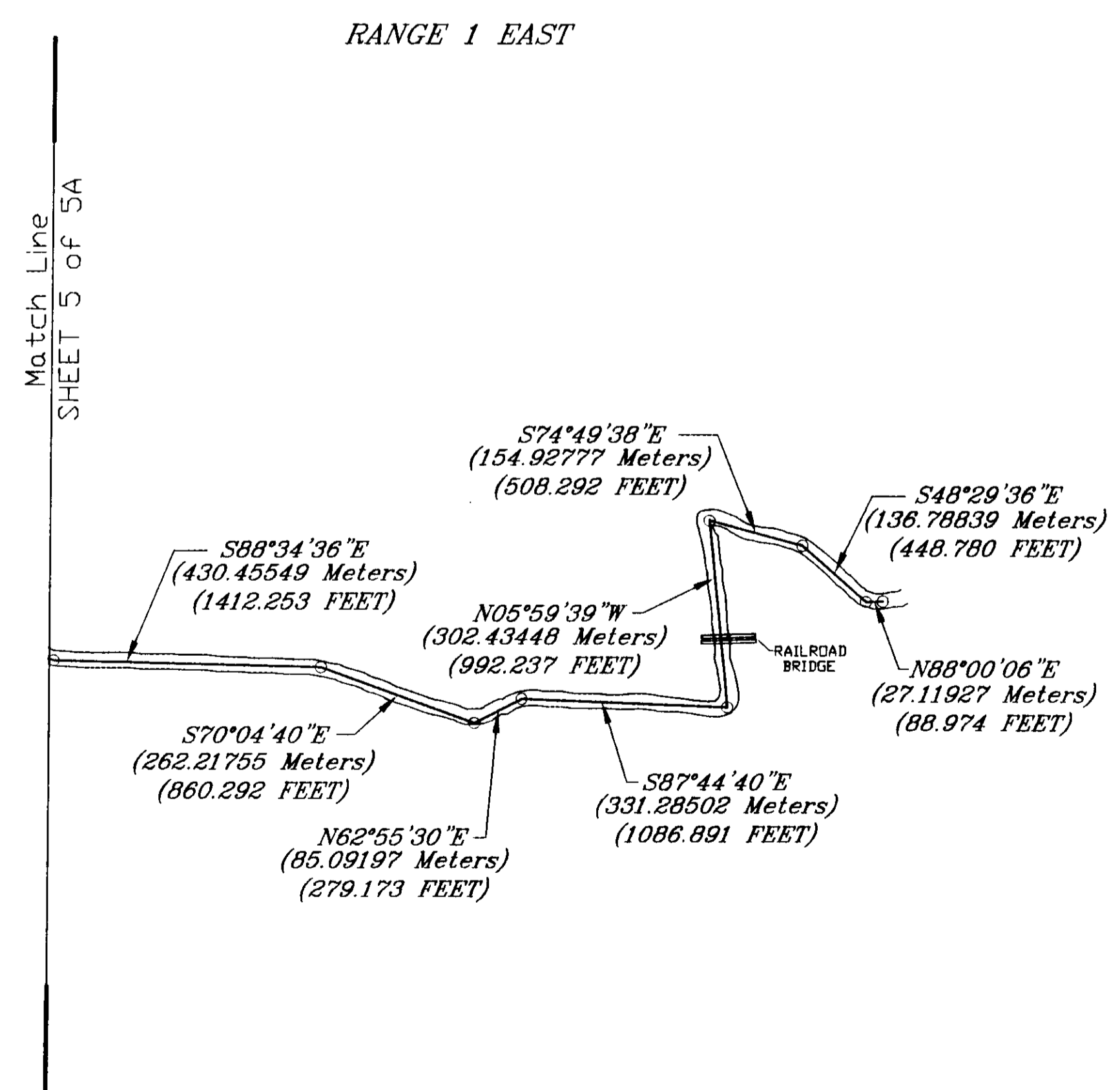
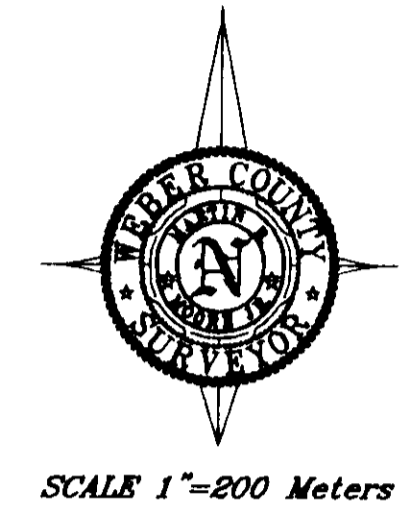
Surveyed By: Weber County Surveyor, Davis County Surveyor. Survey Date: September 18, 2000. Plat Prepared By: Scott Mendoza, GIS Technician. Drawing Date: October 20, 2002. Approved for Filing By: M. Moore, Weber County Surveyor. Approval Date: October 24, 2002.

SHEET NO. 4 OF 5. SURVEY FILING NUMBER: 02993

RECORD INFORMATION section including Weber County Surveying logo, contact information for Martin B. Moore Jr., Ernest D. Rowley, and address: 2380 Washington Blvd. Rm 260, Ogden, Utah 84401.



Note: The Location Of The Weber River And The Centerline Of The River Are Based On An 1894 Survey Of The South Bank Prepared From The Field Notes Of The Joint Committee Consisting Of Thomas H. Phillips, County Surveyor, Davis County, Utah And N.W. Bethal, Depl. County Surveyor, Weber County, Utah Designated Hereon As "Ancient Weber River"



Note: All Distances Shown In Parenthesis Are Utah State Plane Grid Distances

DECLARATION OF COUNTY LINE COMMON TO WEBER AND DAVIS COUNTY, UTAH

RUNNING THRU SECTIONS 23 & 24, T5N,R3W, AND SECTIONS 19, 20, 21, 22, 23 & 24, T5N,R2W, AND SECTIONS 19, 20, 21, 25, 26, 27 & 28, T5N,R1W, AND SECTIONS 29 & 30, T5N,R1E, SLB & M.

Surveyed By
Weber County Surveyor
Davis County Surveyor
SURVEY DATE September 18, 2000

Plot Prepared By
Scott Mendoza
GIS Technician
DRAWING DATE October 20, 2002

Approved for Filing By
M. Moore
Weber County Surveyor
APPROVAL DATE October 24, 2002

SHEET NO. 5 OF 5
002993
SURVEY FILING NUMBER

<p>WEBER COUNTY SURVEYING Martin B. Moore Jr. Weber County Surveyor Ernest D. Rowley, Chief Deputy 2380 Washington Blvd Rm 260 Ogden, Utah 84401 (801) 399-8020 FAX (801) 399-8316</p>	<p>RECORD INFORMATION</p> <p>BOOK: 56</p> <p>PAGE NO: 88-92</p> <p>ENTRY NO: 1885948</p>
---	--