

**Narrative**  
 The purpose of this survey was to do the Boundary Survey as required by U.D.O.T. for the SP-0053(2) Roadway project located in Ogden, Weber County, Utah. The control used to establish the Right-of-Way lines was that established by U.D.O.T. The Basis of Bearing is the West line of the Southwest Quarter of Section 30, T6N, R1W, S1B&M which bears North 01°04'34" East.

SOUTHWEST CORNER SECTION 30  
 T6N, R1W, S1B&M  
 BRASS CAP MONUMENT

25 30  
 36 31

360.72 m

N 1°04'34" E

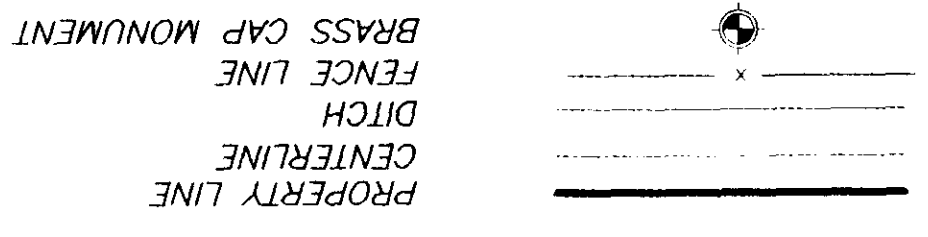
1616.11 m

25 30

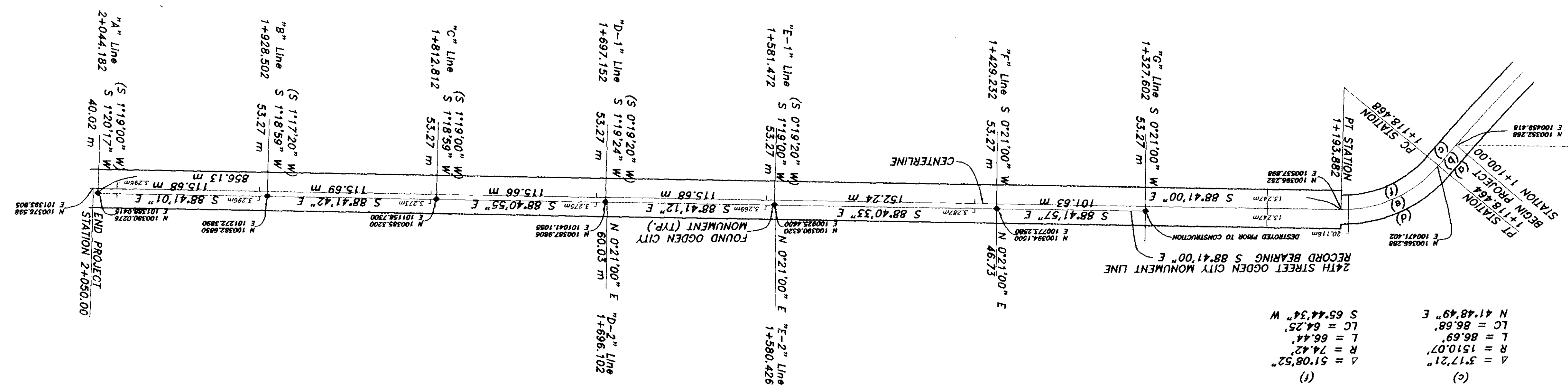
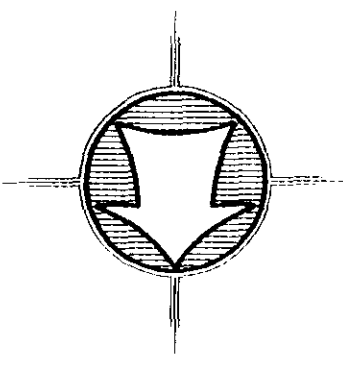
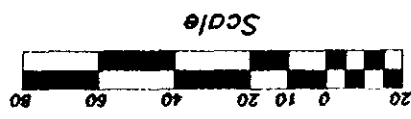
WEST QUARTER CORNER SECTION 30  
 T6N, R1W, S1B&M  
 BRASS CAP MONUMENT

S 88°55'26" E  
 452.78'

A = 51°08'52"	D = 317'21"	A = 51°08'52"	D = 317'21"
R = 1489.95'	L = 85.53'	R = 84.45'	L = 86.10'
R = 84.54'	LC = 81.62'	R = 84.45'	LC = 86.68'
L = 85.53'	L = 72.94'	L = 75.42'	L = 72.94'
LC = 81.62'	S 65°44'34" W	S 65°44'34" W	S 65°44'34" W
A = 51°08'52"	D = 317'21"	A = 51°08'52"	D = 317'21"
R = 1489.95'	L = 85.53'	R = 84.45'	L = 86.10'
R = 84.54'	LC = 81.62'	R = 84.45'	LC = 86.68'
L = 85.53'	L = 72.94'	L = 75.42'	L = 72.94'
LC = 81.62'	S 65°44'34" W	S 65°44'34" W	S 65°44'34" W



LEGEND



**SURVEY CERTIFICATE**  
 I, K. Greg Hansen, do hereby certify that I am a Registered Land Surveyor, and that I hold Certificate No. 167819 as prescribed by the Laws of the State of Utah, and that I have made and/or supervised the survey of the Right-of-Way as shown and described hereon. I and the firm of K. Greg Hansen, Registered Professional Engineer and Land Surveyors, are duly licensed and qualified to perform the survey and that the plot is a true and correct representation of said survey to the best of my knowledge and belief.  
 K. Greg Hansen, R.L.S. No. 167819  
 K. GREG HANSEN  
 STATE OF UTAH  
 REGISTERED PROFESSIONAL ENGINEER AND LAND SURVEYOR  
 MAY 3 7 53  
 003063  
 Nov. 15, 2002 date

1. The bearings and distances shown are the calculated bearings between the bearings in parentheses are the record bearings shown on drawings DM-1 thru DM-7. The coordinates given by U.D.O.T. on drawings DM-1 thru DM-7. The bearings and distances shown are the calculated bearings between measured coordinates. The coordinates in parentheses are the record coordinates given by U.D.O.T. on sheets DM-1 thru DM-7.  
 2. The coordinates shown on the centerline monuments are the field measured coordinates. The coordinates in parentheses are the record coordinates given by U.D.O.T. on sheets DM-1 thru DM-7.

003063

SHEETS	1	OF	1
SHEET	1		
<b>Utah Dept. of Transportation</b>			
Record of Survey			
Ogden 24th Street: B Avenue to I-15			
SP-0053(2)0			
A PART OF THE SOUTH HALF OF SECTION 30, TOWNSHIP 6 NORTH, RANGE 1 WEST, S1B&M.			
Drawn By: JL	Date: 11/13/02		
Checked By:			
Approved By:			
Scale: -			
Drawing File: 02-3-19bndrv.dwg			
JOB NUMBER: 02-3-19			
<b>HANSEN &amp; ASSOCIATES, INC.</b>			
Consulting Engineers and Land Surveyors			
538 North Main	Brighton City, Utah	Ogden	84302
Brighton City		389-4805	752-8272
723-3491			
No.	Date	By	Revision