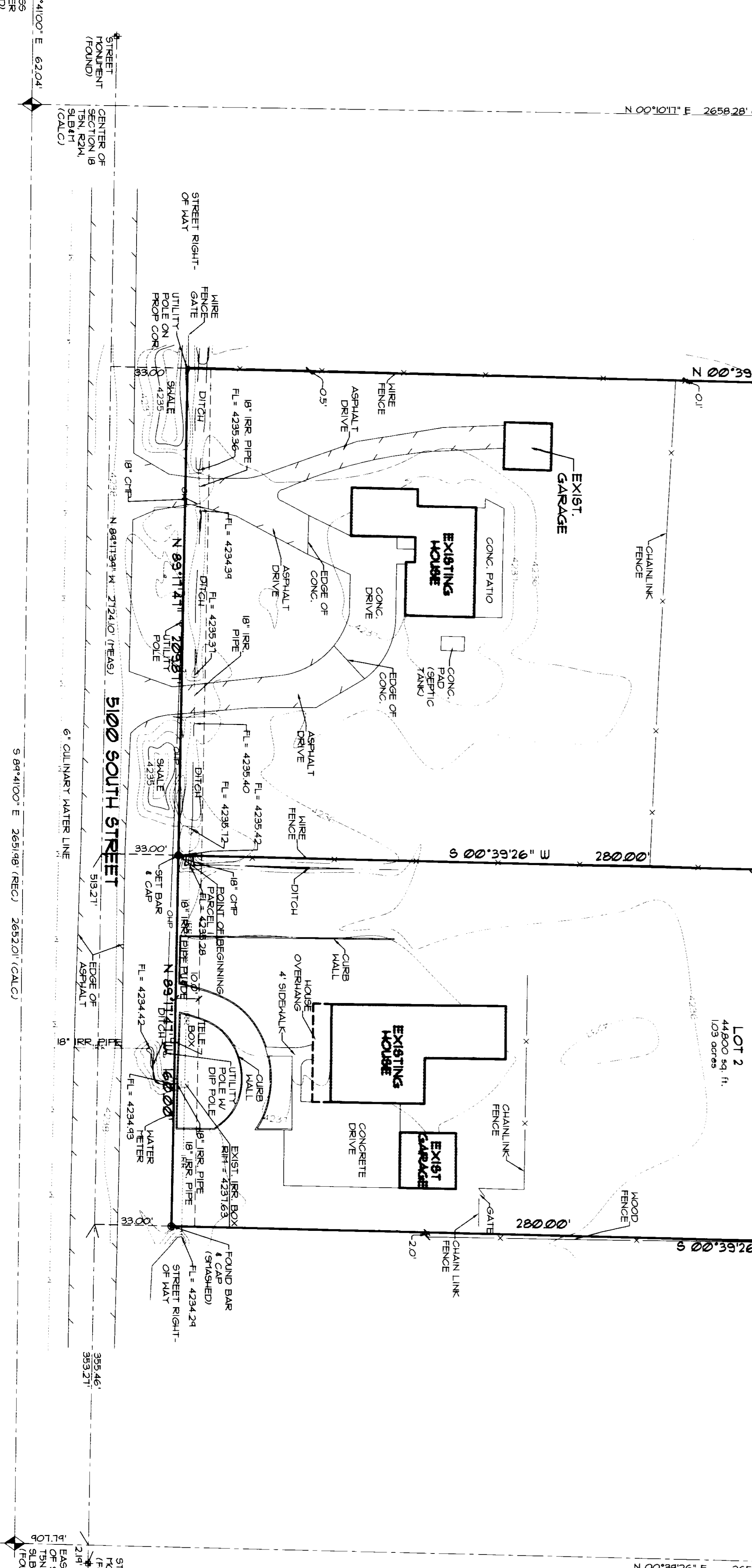
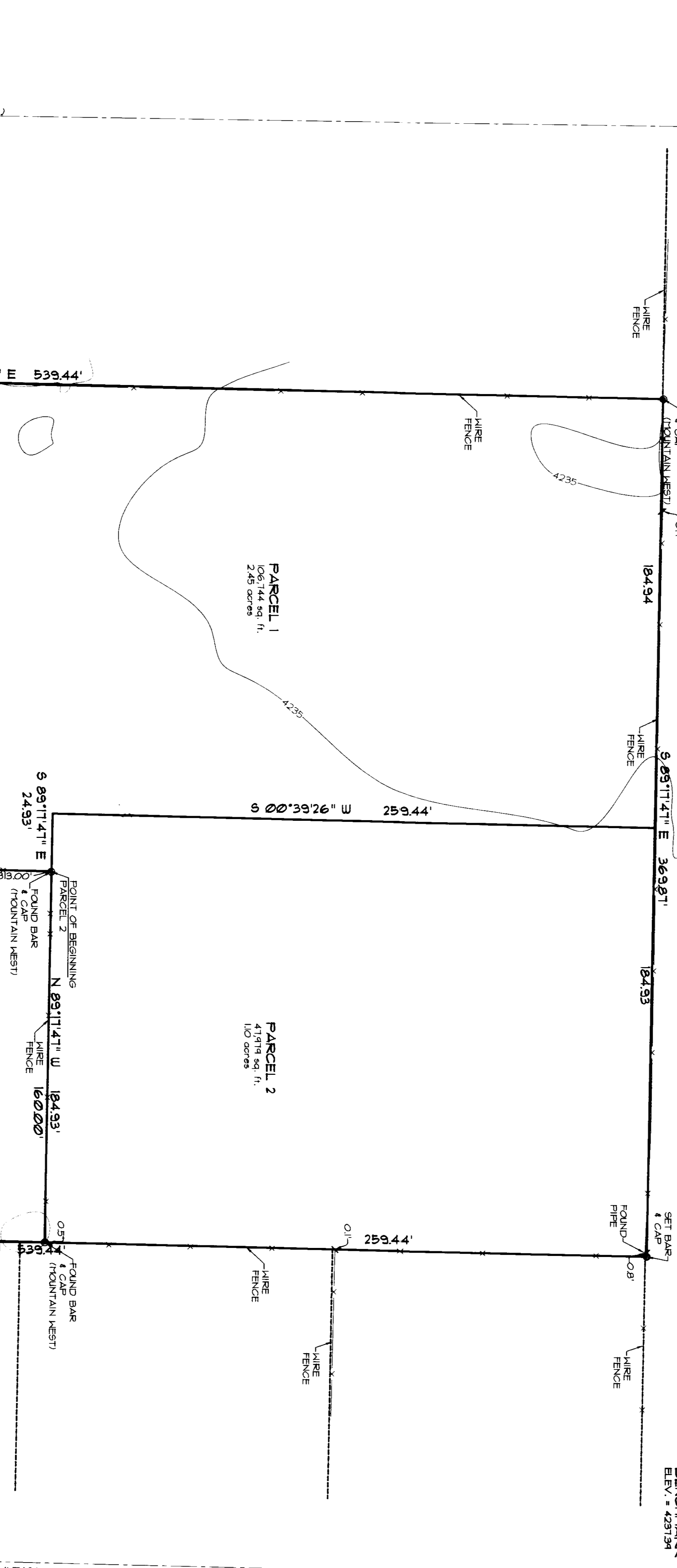


N 89°11'41" E 369.871' (CALC.)  
 N 00°39'26" E 259.44' (REC.)  
 N 00°39'26" E 265.88' (REC.)  
 N 00°39'26" E 265.88' (REC.)



LEGEND

- EXISTING WATER LINE
- EXISTING SANITARY SEWER LINE
- EXISTING STORM DRAIN LINE
- EXISTING IRRIGATION LINE
- EXISTING SECONDARY WATER LINE
- TELEPHONE LINE
- OVERHEAD POWER LINE
- PIPE
- SECTION CORNER
- STREET CORNER
- IRRIGATION

PROPERTY DESCRIPTIONS  
 Parcel 1  
 Parcel 2

RECEIVED  
 AUG 01  
 WHEEL COUNTY SURVEYOR

DAVIS SURVEY  
 5160 & 5194 WEST & 5100 SOUTH STREET  
 HOOPER  
 CHARLENE DAVIS

BOUNDARY & TOPOGRAPHIC SURVEY

PROJECT NAME:  
 PROJECT NO.:  
 SHEET NO.:  
 003092

ENSIGN SURVEYING  
 1558 West 700 North, Suite 5  
 Layton, Utah 84041  
 (801) 547-1100  
 fax (801)-593-6315  
 Project manager: K. RUSSELL  
 drawn by: T. WILLIAMS  
 date: 7/31/05

003092

003092

003092

003092

003092