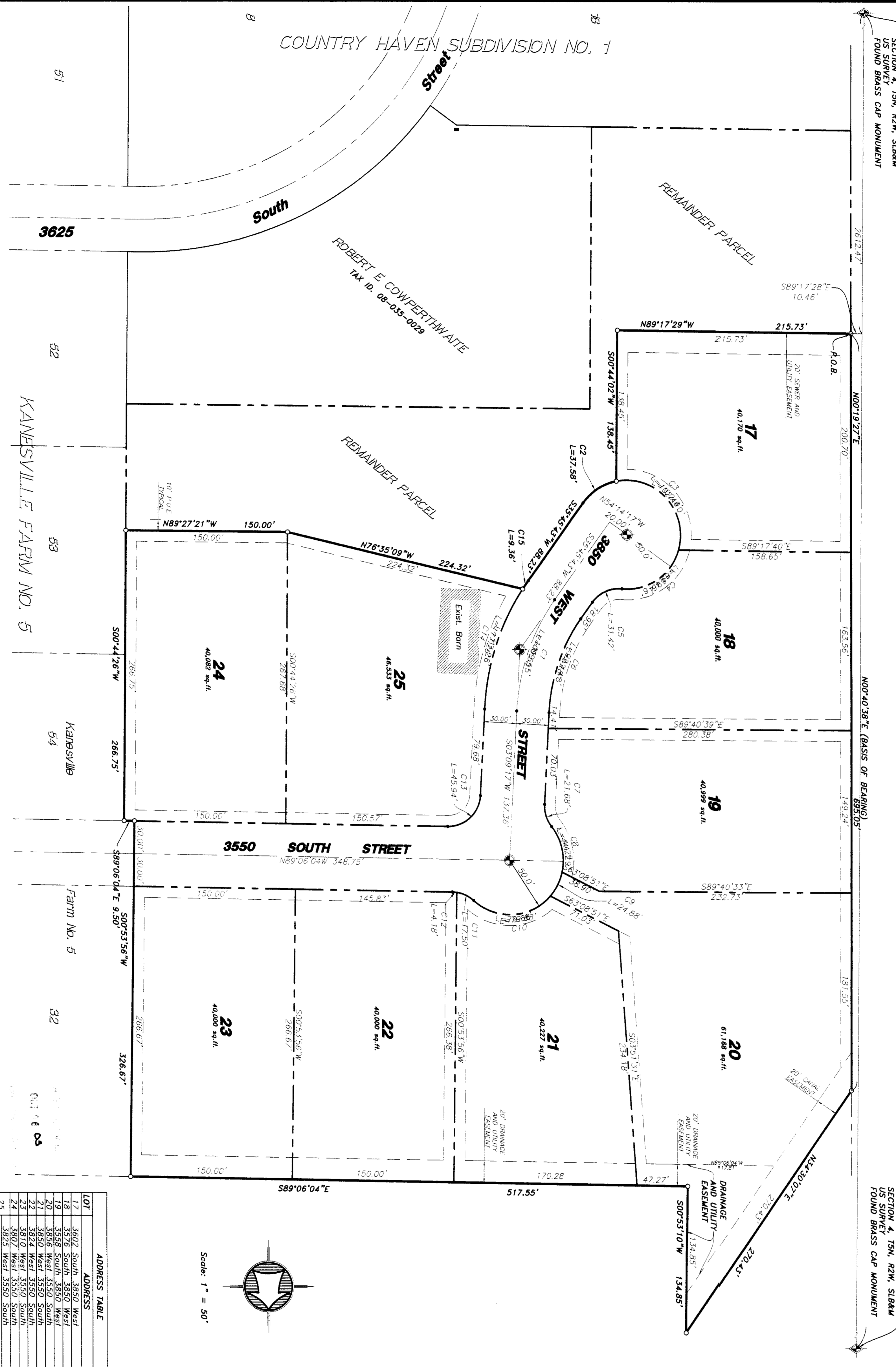


**A FINAL PLAT OF**  
**COUNTRY HAVEN SUBDIVISION NO. 1A**  
 A PART OF THE SOUTHEAST QUARTER OF SECTION 4  
 TOWNSHIP 5 NORTH, RANGE 2 WEST, SLB&M  
 WEST HAVEN CITY, WEBER COUNTY, UTAH



SOUTH QUARTER CORNER OF SECTION 4, T5N, R2W, SLB&M FOUND BRASS CAP MONUMENT

NORTH QUARTER CORNER OF SECTION 4, T5N, R2W, SLB&M FOUND BRASS CAP MONUMENT

**SURVEYORS CERTIFICATE**  
**003124**

I, K. Greg Hansen, a registered land surveyor in the State of Utah, do hereby certify that this plat of COUNTRY HAVEN SUBDIVISION NO. 1A in Weber County, Utah has been correctly drawn to the designated scale and is a true and correct copy of the original survey records in the Weber County Recorder's Office, and of a survey made on the ground.

Signed this 1st day of Oct. 2003

K. Greg Hansen  
 Surveyor

**BOUNDARY DESCRIPTION**

A PART OF THE SOUTHEAST QUARTER OF SECTION 4, TOWNSHIP 5 NORTH, RANGE 2 WEST BEGINNING AT A POINT LOCATED NORTH 02°40'58" EAST 2612.47 FEET ALONG WEST LINE OF SAID SOUTHEAST QUARTER AND SOUTH 89°17'28" EAST 10.46 FEET FROM THE SOUTH QUARTER CORNER OF SAID SECTION, RUNNING THENCE NORTH 00°19'27" EAST 688.05 FEET THENCE NORTH 50°00'00" EAST 278.57 FEET TO THE WEST LINE OF KANESVILLE FARM NO. 5; THENCE ALONG SAID WEST LINE THE FOLLOWING COURSES: (1) SOUTH 00°33'56" WEST 326.67 FEET; (2) SOUTH 89°06'04" WEST 9.50 FEET; (3) SOUTH 00°44'28" WEST 266.75 FEET THENCE NORTH 89°27'21" WEST 150.00 FEET TO A 222.50 FOOT PAVILION CURVE A DISTANCE OF 9.56 FEET; CHORD BEARS SOUTH AND OF 34.3323" WEST 9.56 FEET; THENCE SOUTH 59°45'45" WEST 882.3 FEET THENCE TO THE NORTH QUARTER CORNER OF SECTION 4, TOWNSHIP 5 NORTH, RANGE 2 WEST, THENCE SOUTH 138.45 FEET; THENCE NORTH 89°17'29" WEST 215.73 FEET TO THE POINT OF BEGINNING, CONTAINING 10.055 ACRES AND 9 LOTS.

**OWNER'S DEDICATION**

The undersigned owner of the herein described tract of land, do hereby set apart and dedicate to the public use of the herein shown on the plat and name said tract Country Street and the portion of said tract of land designed as streets the same to be used as public thoroughfares forever, and also grant and dedicate to the public use of the same, all poles, ditches and canal maintenance easements, the same to be used for the installation, maintenance and repair of water, gas, electric, telephone, and other utility lines, and for the perpetual preservation of water drainage channels of their natural state wherever is applicable as may be authorized by West Haven, Utah, with no buildings or structures being erected within said easements.

Signed this day of 2003

Kevin W. Gossmann, President  
 K&W Development, Inc.

**NARRATIVE:**

The purpose of this survey was to establish and set the property corners of the subdivision 4 on shown and recorded hereon. This survey and plat are based on the basis of bearing is the line from the South quarter corner to the North quarter corner of section 4, township 5 North, range 2 West, SLB&M, which bears N02°40'58"E as currently monumented.

**NOTE:**

P.U.E. = Public Utility Easement. All P.U.E.'s are ten feet in width unless otherwise specified.

Utilities shall have the right to install, maintain, and operate their equipment above and below ground and all other related facilities within the Public Utility Easements shown on this plat. The owner of the land shall be responsible for providing all services within and without the lots identified herein, including the right of access to such facilities and the right to require removal of any obstructions including, but not limited to, trees, shrubs, and other structures which may interfere with the utility easements. At no time may any permanent structures be placed within the P.U.E. of the lot owners without the prior approval of the utilities with facilities in the P.U.E.

Scale: 1" = 50'

LOT	AREA	ADDRESS
17	3970	South 3850 West
18	40,000	South 3850 West
19	40,390	South 3850 West
20	61,168	South 3850 West
21	40,221	South 3850 West
22	40,000	South 3850 West
23	40,000	South 3850 West
24	40,000	South 3850 West
25	40,333	South 3850 West
32	40,000	South 3850 West

CURVE	DELTA	RADIUS	TANGENT	CHORD	BEARING
C1	150.00	150.00	150.00	150.00	S52°27'12"W
C2	150.00	150.00	150.00	150.00	S52°27'12"W
C3	150.00	150.00	150.00	150.00	S52°27'12"W
C4	150.00	150.00	150.00	150.00	S52°27'12"W
C5	150.00	150.00	150.00	150.00	S52°27'12"W
C6	150.00	150.00	150.00	150.00	S52°27'12"W
C7	150.00	150.00	150.00	150.00	S52°27'12"W
C8	150.00	150.00	150.00	150.00	S52°27'12"W
C9	150.00	150.00	150.00	150.00	S52°27'12"W
C10	150.00	150.00	150.00	150.00	S52°27'12"W
C11	150.00	150.00	150.00	150.00	S52°27'12"W
C12	150.00	150.00	150.00	150.00	S52°27'12"W
C13	150.00	150.00	150.00	150.00	S52°27'12"W
C14	150.00	150.00	150.00	150.00	S52°27'12"W
C15	150.00	150.00	150.00	150.00	S52°27'12"W
C16	150.00	150.00	150.00	150.00	S52°27'12"W

**ACKNOWLEDGMENT**

I, the undersigned, do hereby certify that I have investigated the lines of survey of the foregoing plat and the legal description thereon to be correct and to agree with the same and monuments on record in this office.

Signed this day of 2003

Commission Expires

**WEST HAVEN CITY ATTORNEY**  
 I have examined this subdivision plat and in my opinion it conforms with the City Ordinance applicable thereto and now in force and effect.

Signed this day of 2003

**WEST HAVEN ENGINEER**  
 I hereby certify that this subdivision plat and the dedication and financial guarantees of public improvements required for these improvements.

Signed this day of 2003

**WEST HAVEN CITY ACCEPTANCE**  
 This is to certify that this subdivision plat and the dedication and financial guarantees of public improvements required for these improvements.

Signed this day of 2003

**WEST HAVEN PLANNING COMMISSION ACCEPTANCE**  
 This is to certify that this subdivision plat was duly approved by the Planning Commission on this day of 2003.

**WEST HAVEN CITY SURVEYOR**  
 I hereby certify that I have investigated the lines of survey of the foregoing plat and the legal description thereon to be correct and to agree with the same and monuments on record in this office.

Signed this day of 2003

**HANSEN & ASSOCIATES, INC.**  
 Consulting Engineers and Land Surveyors  
 638 North Main  
 Brigham City, Utah 84302  
 801-733-3838

**COUNTY RECORDER**

ENTER NO. \_\_\_\_\_ FEE PAID \_\_\_\_\_

RECORDED \_\_\_\_\_ AT \_\_\_\_\_

IN BOOK \_\_\_\_\_ OF \_\_\_\_\_

RECORDS PAGE \_\_\_\_\_

COUNTY RECORDER \_\_\_\_\_

BY \_\_\_\_\_