

BOUNDARY DESCRIPTION

A part of Section 36, Township 6 North, Range 2 West, Salt Lake County, Utah, has been subdivided into lots and blocks as shown on the attached plat...

NARRATIVE

The following conditions were in force when the survey was made: 1. The plat was prepared by the Surveyor in accordance with the provisions of the Utah Surveying Act...

LEGEND

- FOUND WEIR COUNTY MONUMENT TO BE SET AFTER ROAD CONSTRUCTION
STREET MONUMENTS TO BE SET AFTER ROAD CONSTRUCTION
FOUND REBAR AND CAP WITH LABELS AS SHOWN BELOW

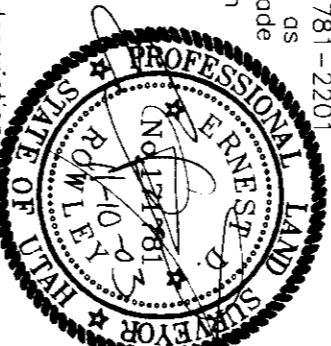
MIDLAND BUSINESS PARK
Record of Survey Map
PART OF SECTION 36 TOWNSHIP 6 NORTH, RANGE 2 WEST,
SALT LAKE BASE AND MERIDIAN, WEBER COUNTY, UTAH
DECEMBER 1995

SURVEYOR'S CERTIFICATE

I, Ernest D. Rowley, do hereby certify that I am a registered land surveyor in the State of Utah and hold certificate number 88-11781-2201...

BASIS OF BEARING

The basis of bearing is as contained in the boundary description.
N 00°17'06" E 2624.58' record
S 89°08'07" E 2846.00' record



NARRATIVE (Continued A)

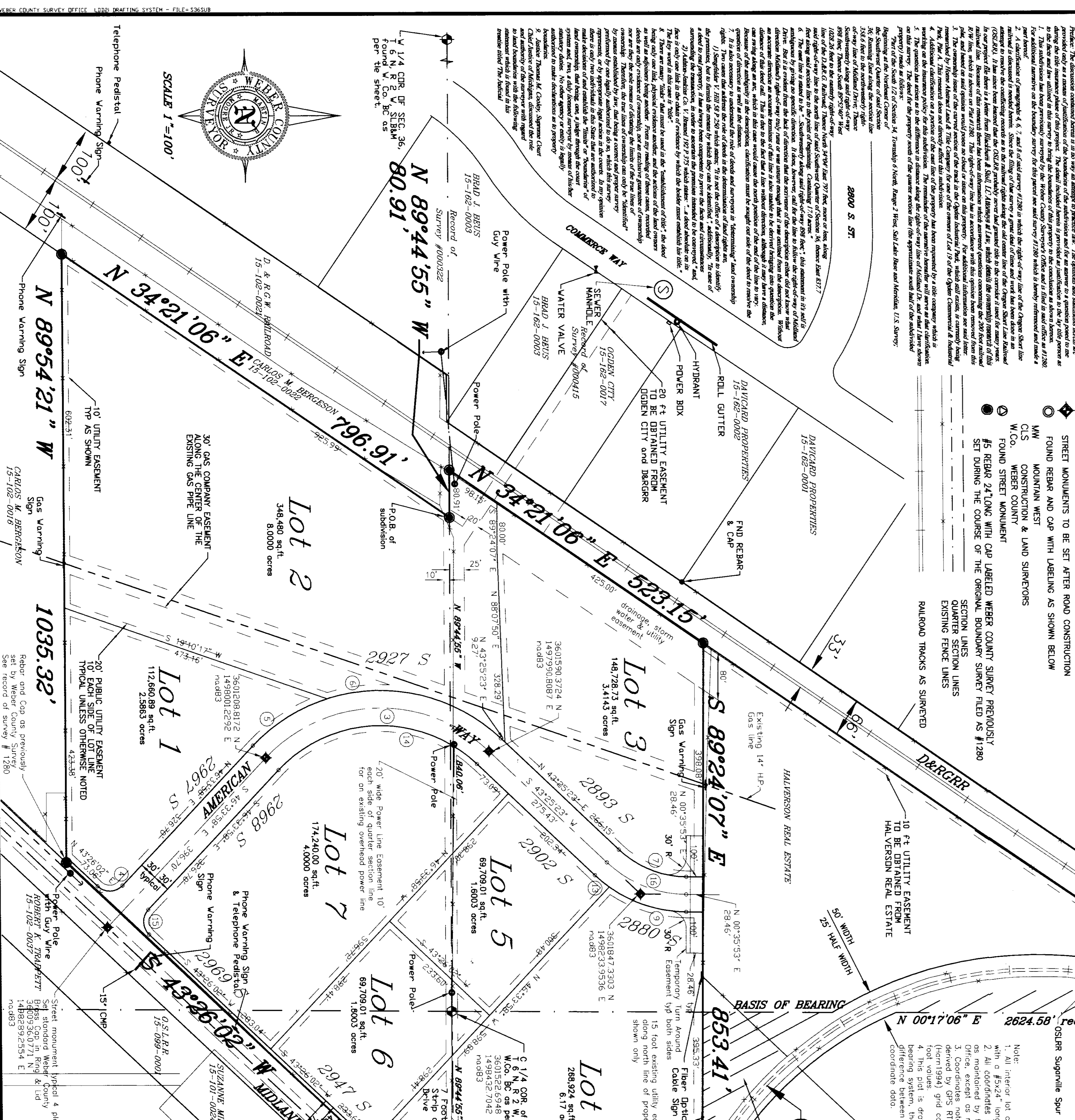
Approximate description of the boundary lines and monuments for the lots shown on the plat. Includes bearings and distances for various lines and curves.

NARRATIVE (Continued B)

Approximate description of the boundary lines and monuments for the lots shown on the plat. Includes bearings and distances for various lines and curves.

NARRATIVE (Continued C)

Approximate description of the boundary lines and monuments for the lots shown on the plat. Includes bearings and distances for various lines and curves.



CURVE DATA table with columns: CURVE NO., DATA, RADII, TANGENT, CHORD BEARING, CHORD DISTANCE. Includes 15 rows of curve information.

NARRATIVE (Continued B) text block describing the survey process and findings for the second part of the plat.

NARRATIVE (Continued C) text block describing the survey process and findings for the third part of the plat.

Professional information block including 'RECEIVED' stamp, '003138' number, 'NOV 19 95' date, and 'WEBER COUNTY' logo with 'Ernest D. Rowley, Surveyor' name.