

# Rocky Mountain Meadows Subdivision Phase Ten

A part of the Northwest 1/4 of Section 9, T5N, R2W, SLB&M, U.S. Survey  
West Haven City, Weber County, Utah

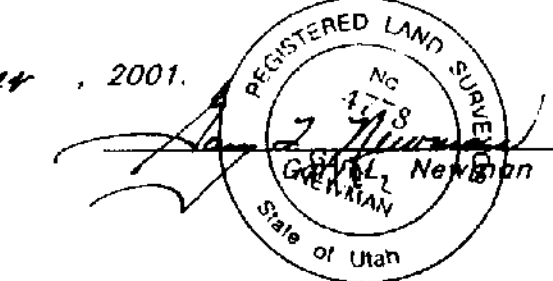
SURVEYOR'S CERTIFICATE

I, Gary L. Newman, a Registered Professional Land Surveyor in the State of Utah, do hereby certify that this plat of Rocky Mountain Meadows Subdivision Phase Ten in Weber County, Utah has been correctly drawn to the designated scale and is a true and correct representation of the following description of lands included in said subdivision, based on data compiled from records in the Weber County Recorder's Office, and of a survey made on the ground.

Signed this 8<sup>th</sup> day of October, 2001.

4778

License No.



**NARRATIVE**

This Survey and Subdivision plat was required by Mr. Kevin V. Glasmann of KDR, LLC in order to subdivide residential lots. Brass Cap Monuments were found at the Northwest corner and the North 1/4 corner of Section 9 T5N, R2W. A line bearing N 89°19'15" W (WCS) between these two monuments was used as the basis of bearings. Lot corners were monumented as depicted on this drawing.

**BOUNDARY DESCRIPTION**

A part of the Northwest corner of Section 9, Township 5 North, Range 2 West, Salt Lake Base and Meridian, U.S. Survey:  
Beginning at a point on the centerline of 3900 West street, which is 1023.05 feet South 0°33'52" West along said centerline from the North quarter corner of said Section 9; and running thence South 0°33'52" West 305.18 feet along said centerline to the intersection of said centerline and the centerline of 4200 South Street; thence North 89°22'21" West 1092.98 feet along said centerline to the Easterly boundary of Rocky Mountain Meadows Subdivision Phase Seven in West Haven City, Weber County, Utah; thence North 264.33 feet to the Southerly Boundary of Rocky Mountain Meadows Subdivision Phase Four in West Haven City, Weber County, Utah; thence five (5) courses along the Southerly boundary of said Phase Four as follows: North 76°27'51" East 164.83 feet; East 141.42 feet; South 41°27'45" East 12.97 feet and East 155.44 feet to the Southwest corner of Lot 82, Rocky Mountain Meadows Subdivision Phase Six in West Haven City, Weber County, Utah; thence along the Southerly boundary of said Phase Six East 450.00 feet to the Southwest corner of Lot 86 of said, Rocky Mountain Meadows Subdivision Phase Seven; thence East 180.24 feet to the point of beginning.

Contains 7.514 Acres

**OWNER'S DEDICATION**

I the undersigned owner of the herein described tract of land, do hereby set apart and subdivide the same into lots and streets as shown on the plat and name said tract Rocky Mountain Meadows Subdivision Phase Ten and do hereby: dedicate, grant and convey to West Haven, Utah all those parts or portions of said tract of land designed as streets the same to be used as public thoroughfares forever, and also grant and dedicate a perpetual right and easement over, upon and under the lands designated on the plat as public utility, storm water drainage, drainage and canal maintenance easements; the same to be used for the installation, maintenance and operation of public utility service lines, storm drainage facilities, irrigation canals or for the perpetual preservation of water drainage channels in their natural state whichever is applicable as may be authorized by West Haven, Utah, with no buildings or structures being erected within such easements.

Signed this 8<sup>th</sup> day of October, 2001.

KDR, LLC., A Utah Limited Liability Company

*Kevin V. Glasmann*  
Kevin V. Glasmann, Manager

**ACKNOWLEDGMENT**

State of Utah } ss  
County of Weber }

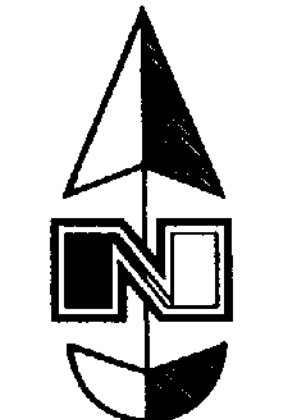
On the 8 day of October, 2001, personally appeared before me, Kevin V. Glasmann who being by me duly sworn did say that he is Manager of KDR, LLC., a Utah Limited Liability Company and that said instrument was signed in behalf of said Limited Liability Company by a resolution of its Board of Directors and Kevin V. Glasmann said Limited Liability Company executed the same.

Residing at: West Haven, Ut

*Patricia G. Mikesell*  
A Notary Public commissioned in Utah

Commission Expires: Aug 1, 2002

*Patricia G. Mikesell*  
Print Name



Scale: 1" = 50'

**LEGEND**

(As of Oct. 2001)

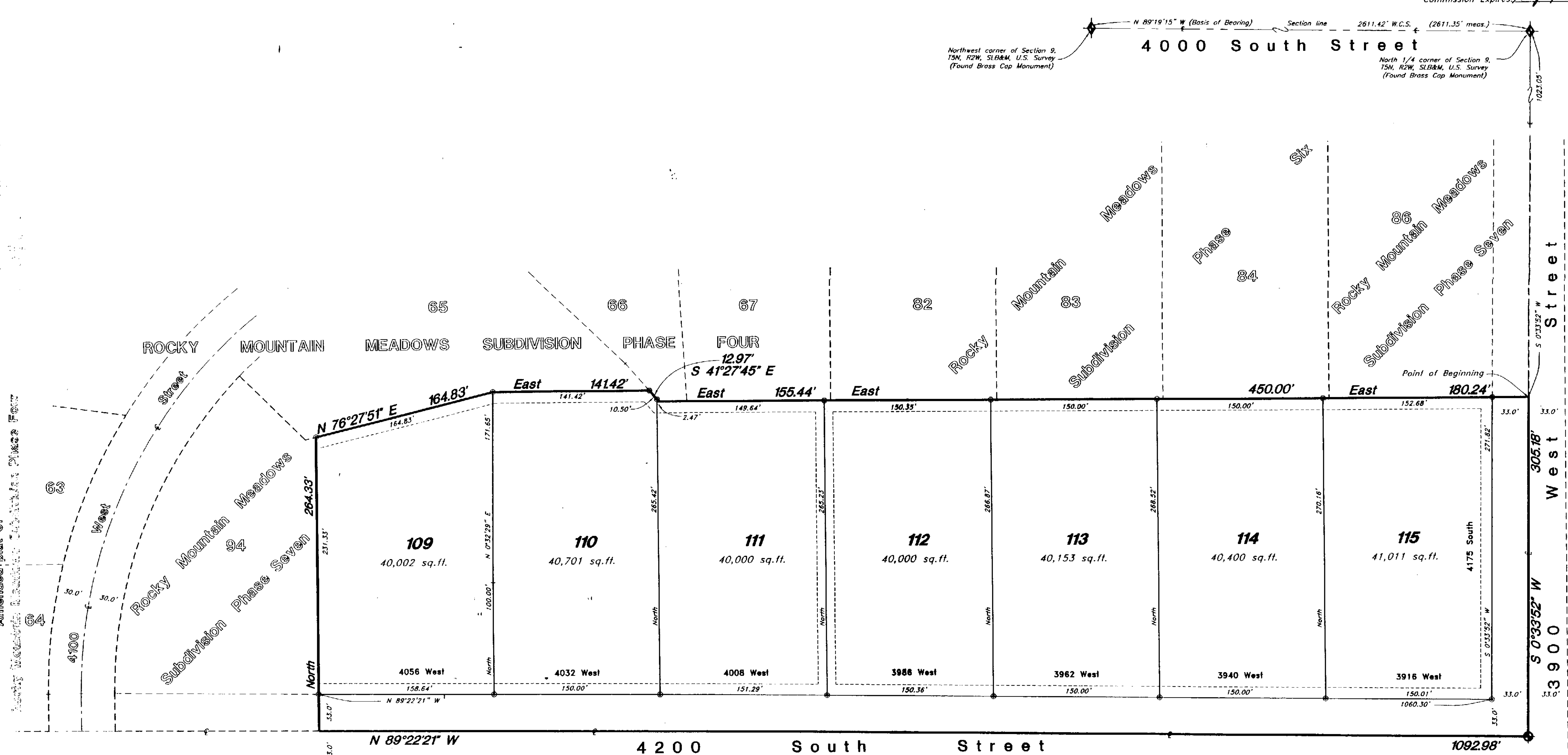
- Set Rebar & Cap w/Fencepost
- Set Hub & Tack
- ◆ Monument to be Set
- ◆ Section Corner
- Found Great Basin Rebar & Cap w/Fencepost

**WEST HAVEN CITY COUNCIL ACCEPTANCE**

This is to certify that this subdivision plat, the dedication of streets and other public ways and financial guarantees of public improvements thereon hereby accepted by the City Council of West Haven, Utah this 15 day of OCT, 2001.

Attest: *Patricia G. Mikesell*  
Mayor, West Haven, Utah

AUTOMATIC PRINT OUT FROM THE WEBER COUNTY RECORDER'S OFFICE



**NOTE:**  
10' Utility and Drainage Easements each side of property line as indicated by dashed lines, except as otherwise shown.

**GREAT BASIN ENGINEERING NORTH**  
CONSULTING ENGINEERS AND SURVEYORS  
4774 South 1300 West - Suite 102  
Riverville, Utah 84405  
P.O. Box 9307, Ogden, Utah 84409  
Ogden (801)394-4515, Salt Lake City (801)521-0222, Fax (801)392-7544

**WEST HAVEN CITY SURVEYOR**  
I hereby certify that I have investigated the lines of survey of the foregoing plat and the legal description of the land embraced therein, and find them to be correct and to agree with the lines and monuments on record in this office.  
Signed this \_\_\_\_\_ day of \_\_\_\_\_, 2001.  
Signature \_\_\_\_\_

**WEST HAVEN CITY ENGINEER**  
I hereby certify that the required public improvement standards and drawings for this subdivision conform with County standards and the amount of the financial guarantee is sufficient for the installation of these improvements.  
Signed this 8<sup>th</sup> day of October, 2001.  
*Shawn L. Anderson*  
Signature

**WEST HAVEN CITY ATTORNEY**  
I have examined the financial guarantee and other documents associated with this subdivision plat and in my opinion they conform with the West Haven, Utah Ordinances applicable thereto and now in force and effect.  
Signed this 15 day of Oct, 2001.  
*Alan Martin*  
Signature

**WEST HAVEN CITY PLANNING COMMISSION APPROVAL**  
This is to certify that this subdivision plat was duly approved by the West Haven, Utah Planning Commission on the 10 day of October, 2001.  
*Alan Martin*  
Chair, West Haven, Utah Planning Commission

**WEBER COUNTY RECORDER**  
ENTRY NO. 160116  
FEE \$37.00  
RECORDED 16-OCT-2001 AT 11:02 AM BOOK 54 OF OFFICIAL RECORDS, PAGE 87  
FILED FOR *Kevin V. Glasmann*  
*Doug Crofts*  
WEBER COUNTY RECORDER  
BY: *Bronnie Hitt*  
DEPUTY