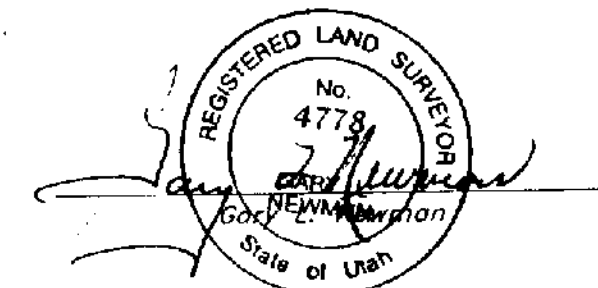


Road Dedication Plat

for 2300 North Street
 A part of Lot 8, Plat "B" North Ogden Survey
 A part of the Northeast 1/4 of Section 32, & the
 Northwest 1/4 of Section 33, T7N, R1W, SLB&M, U.S. Survey
 North Ogden City, Weber County, Utah

SURVEYOR'S CERTIFICATE
 I, Gary L. Newman, a Registered Professional Land Surveyor in the State of Utah, do hereby certify that this Road Dedication Plat of 2300 North Street, in North Ogden City, Weber County, Utah has been correctly drawn to the designated scale and is a true and correct representation of the following description of lands included in said Road Dedication Plat, based on data compiled from records in the Weber County Recorder's Office and from a survey made on the ground.
 Signed this 13th day of July, 2001.



4778
 License No.

OWNER'S DEDICATION

We, the undersigned owners of the hereon described tract of land, hereby dedicate, grant and convey said tract to North Ogden City, Weber County, Utah, as a public thoroughfare forever, to be known as 2300 North Street.

Signed this 13th day of July, 2001

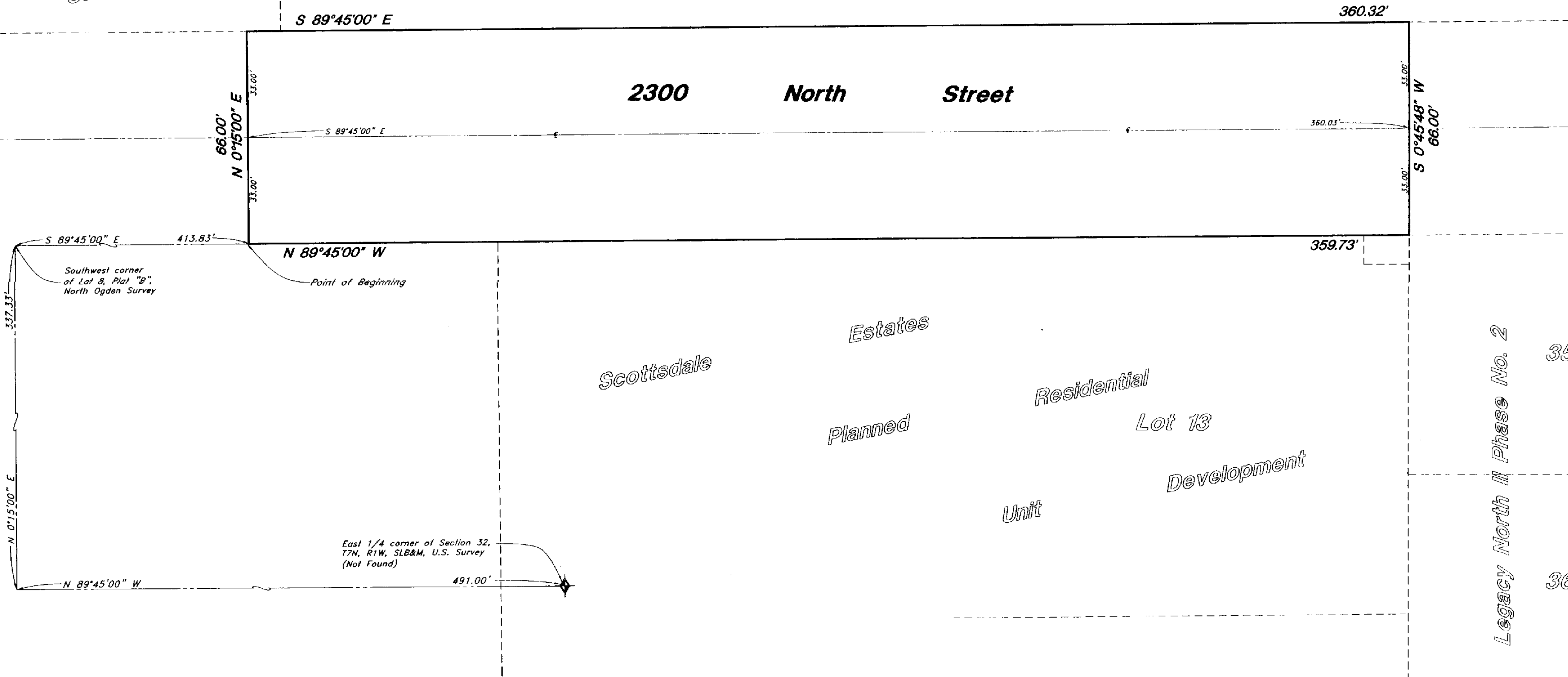
~ J&H Development, L.C. ~

John W. Hansen
 John W. Hansen



Scale : 1" = 30'

IHC North Ogden
 Subdivision



Scottsdale Estates
 planned Residential
 Unit Development
 Lot 13

Legacy North II Phase No. 2
 35
 36

ACKNOWLEDGMENT

State of Utah } ss
 County of Weber }
 On the 13th day of July, 2001, personally appeared before me John W. Hansen who being by me duly sworn did say that he is manager, and that said instrument was signed in behalf of said J&H Dev. Co. L.C. by a resolution of its members and John W. Hansen acknowledged to me that said J&H Dev. Co. L.C. executed the same.

Residing at: Roy, Utah
 Commission Expires: 11-26-2003
 Laurie Hall
 Laurie Hall
 A Notary Public commissioned in Utah
 Print Name

BOUNDARY DESCRIPTION

A part of Lot 8, Plat "B" North Ogden Survey, Being a part of the Northeast 1/4 of Section 32, & the Northwest 1/4 of Section 33, Township 7 North, Range 1 West, Salt Lake Base & Meridian, U.S. Survey:
 Beginning at the Southeast corner of IHC North Ogden Subdivision in North Ogden City, Weber County, Utah said point being 413.83 feet South 89°45'00" East from the Southwest corner of Lot 8, Plat B, North Ogden Survey; running thence North 0°15'00" East 66.00 feet along the Easterly boundary of said IHC North Ogden Subdivision; thence South 89°45'00" East 360.32 feet to the West line of Legacy North II Phase No. 2 a subdivision in North Ogden City, Weber County, Utah; thence South 0°45'48" West 66.00 feet along said West line; thence North 89°45'00" West 359.73 feet to the point of beginning.
 Contains 23,762 square feet
 or 0.545 Acres

NORTH OGDEN CITY APPROVALS
 This Plat was approved by the City Engineer and the Community Development Director.
 by: *Kent L. Jones* 7/16/01
 City Engineer Date
 by: *Paul M. [Signature]* 16 July 2001
 Community Development Director Date

ASSURANCE STATEMENT
 Assurance in the form of a _____, issued from _____ in the amount of \$ _____ has been deposited with North Ogden City to guarantee construction of the required improvements.

NORTH OGDEN CITY COUNCIL
 Approved by the City Council of North Ogden City, Utah this 17th day of April, 2000.
 By: *John F. [Signature]*
 Mayor
 Attest: *John F. [Signature]*
 City Recorder



GREAT BASIN ENGINEERING NORTH
 CONSULTING ENGINEERS AND SURVEYORS
 4774 South 1300 West - Suite 102
 Rivardale, Utah 84405
 P.O. Box 9307, Ogden, Utah 84409
 Ogden (801)394-4515 Salt Lake City (801)321-0222 Fax (801)392-7544

WEBER COUNTY RECORDER
 ENTRY NO. 1784122 FEE PAID
 FILED FOR RECORD AND
 RECORDED 20-JUL-2001 AT
 1:00 PM IN BOOK 54 OF OFFICIAL
 RECORDS, PAGE 35 RECORDED
 FOR J&H DEVELOPMENT L.C.
 DOUG CROFTS
 WEBER COUNTY RECORDER
 BY: *Cara [Signature]*
 DEPUTY
 MAY 17 04
 003263