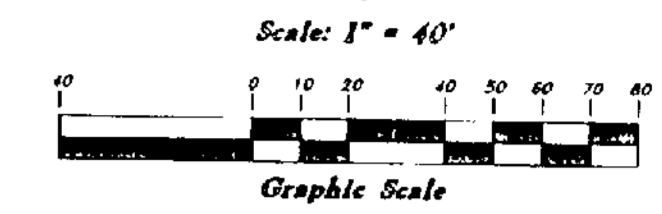
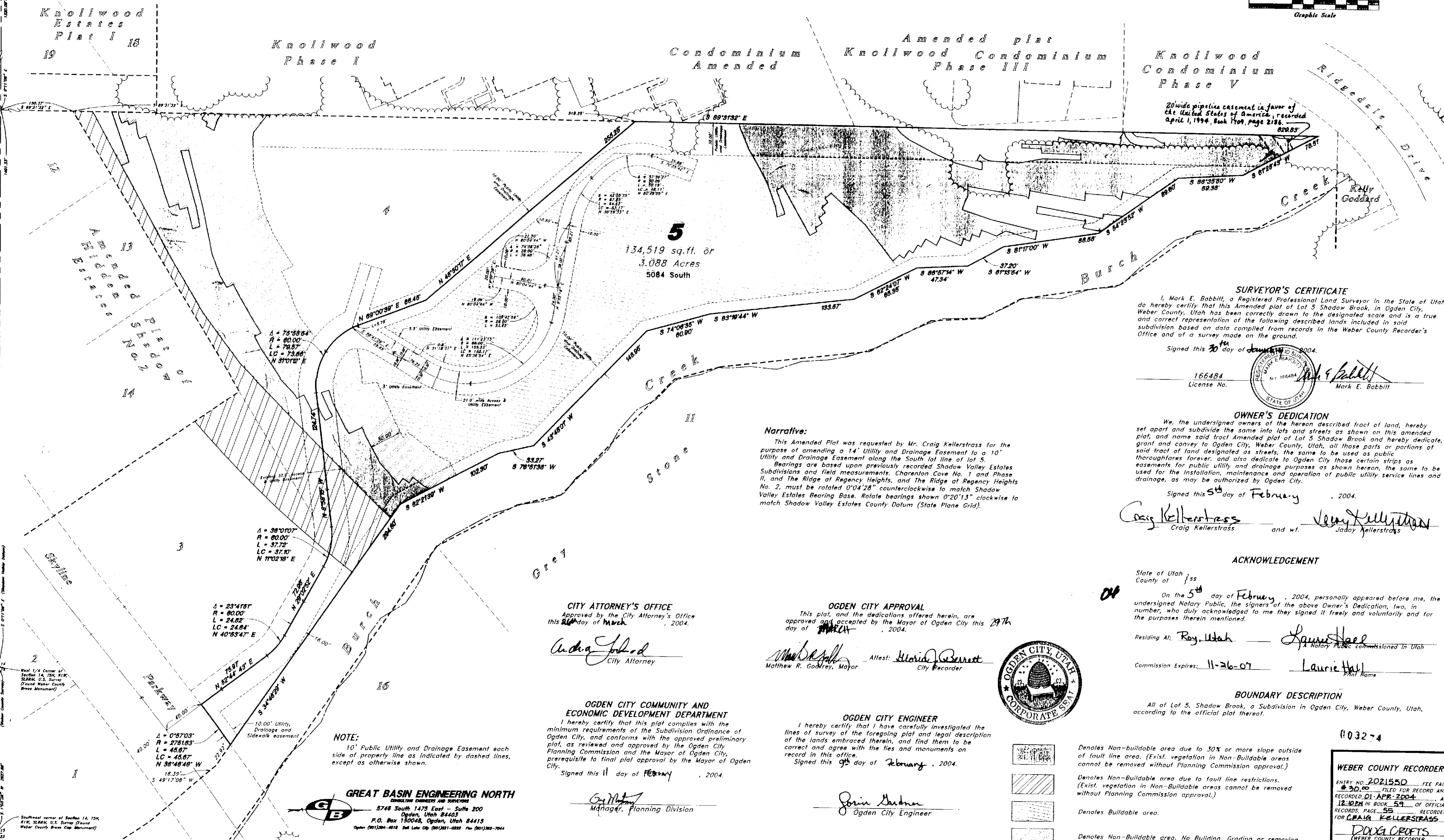


Amended Plat of Lot 5  
**Shadow Brook**  
 A part of the Northwest 1/4 of Section 14 and the  
 Northeast 1/4 of Section 15, T5N, R1W, SLB&M, U.S. Survey  
 Ogden City, Weber County, Utah



Northwest corner of Section 14,  
 T5N, R1W, SLB&M, U.S. Survey  
 (Found Brass Cap)



**SURVEYOR'S CERTIFICATE**  
 I, Mark E. Babbitt, a Registered Professional Land Surveyor in the State of Utah, do hereby certify that this Amended plat of Lot 5 Shadow Brook, in Ogden City, Weber County, Utah has been correctly drawn to the designated scale and is a true and correct representation of the following described lands included in said subdivision based on data compiled from records in the Weber County Recorder's Office and of a survey made on the ground.  
 Signed this 30<sup>th</sup> day of January, 2004.  
 166484 License No. Mark E. Babbitt

**OWNER'S DEDICATION**  
 We, the undersigned owners of the hereon described tract of land, hereby set apart and subdivide the same into lots and streets as shown on this amended plat, and name said tract Amended plat of Lot 5 Shadow Brook and hereby dedicate, grant and convey to Ogden City, Weber County, Utah, all those parts or portions of said tract of land designated as streets, the same to be used as public thoroughfares forever, and also dedicate to Ogden City those certain strips as easements for public utility and drainage purposes as shown hereon, the same to be used for the installation, maintenance and operation of public utility service lines and drainage, as may be authorized by Ogden City.  
 Signed this 5<sup>th</sup> day of February, 2004.  
 Craig Kellerstrass and w/f. Jody Kellerstrass

**CITY ATTORNEY'S OFFICE**  
 Approved by the City Attorney's Office this 26<sup>th</sup> day of March, 2004.  
 Andrea Johnson  
 City Attorney

**OGDEN CITY APPROVAL**  
 This plat, and the dedications offered herein, are approved and accepted by the Mayor of Ogden City this 29<sup>th</sup> day of March, 2004.  
 Matthew R. Godfrey, Mayor Attest: Heidi Bennett  
 City Recorder

**OGDEN CITY COMMUNITY AND ECONOMIC DEVELOPMENT DEPARTMENT**  
 I hereby certify that this plat complies with the minimum requirements of the Subdivision Ordinance of Ogden City, and conforms with the approved preliminary plat, as reviewed and approved by the Ogden City Planning Commission and the Mayor of Ogden City, prerequisite to final plat approval by the Mayor of Ogden City.  
 Signed this 11 day of February, 2004.  
 Erin Hartman  
 Manager, Planning Division

**OGDEN CITY ENGINEER**  
 I hereby certify that I have carefully investigated the lines of survey of the foregoing plat and legal description of the lands embraced therein, and find them to be correct and agree with the lies and monuments on record in this office.  
 Signed this 9<sup>th</sup> day of February, 2004.  
 Erin Hartman  
 Ogden City Engineer



**ACKNOWLEDGEMENT**  
 State of Utah ss  
 County of \_\_\_\_\_  
 On the 5<sup>th</sup> day of February, 2004, personally appeared before me, the undersigned Notary Public, the signers of the above Owner's Dedication, two, in number, who duly acknowledged to me they signed it freely and voluntarily and for the purposes therein mentioned.  
 Residing At: Roy, Utah Laurie Hall  
 A Notary Public commissioned in Utah  
 Commission Expires: 11-26-07 Laurie Hall  
 Print Name

**BOUNDARY DESCRIPTION**  
 All of Lot 5, Shadow Brook, a Subdivision in Ogden City, Weber County, Utah, according to the official plat thereof.

- Denotes Non-buildable area due to 30% or more slope outside of fault line area. (Exist. vegetation in Non-Buildable areas cannot be removed without Planning Commission approval.)
- Denotes Non-Buildable area due to fault line restrictions. (Exist. vegetation in Non-Buildable areas cannot be removed without Planning Commission approval.)
- Denotes Buildable area.
- Denotes Non-Buildable area. No Building, Grading or removing of vegetation within this area.

**NOTE:**  
 10' Public Utility and Drainage Easement each side of property line as indicated by dashed lines, except as otherwise shown.

**GREAT BASIN ENGINEERING NORTH**  
 CONSULTING ENGINEERS AND SURVEYORS  
 5748 South 1475 East - Suite 200  
 Ogden, Utah 84403  
 P.O. Box 150048, Ogden, Utah 84415  
 Ogden (801)244-0818 Salt Lake City (801)241-2222 Fax (801)242-7044

**WEBER COUNTY RECORDER**  
 ENTRY NO. 2021550 FEE PAID  
 \$ 30.00 FILED FOR RECORD AND  
 RECORDED 01 APR 2004 AT  
 12:10 PM IN BOOK 59 OF OFFICIAL  
 RECORDS, PAGE 55 RECORDED  
 FOR CRAIG KELLERSTRASS  
 DODD CROFTS  
 WEBER COUNTY RECORDER  
 BY: Yeann Kitts  
 DEPUTY