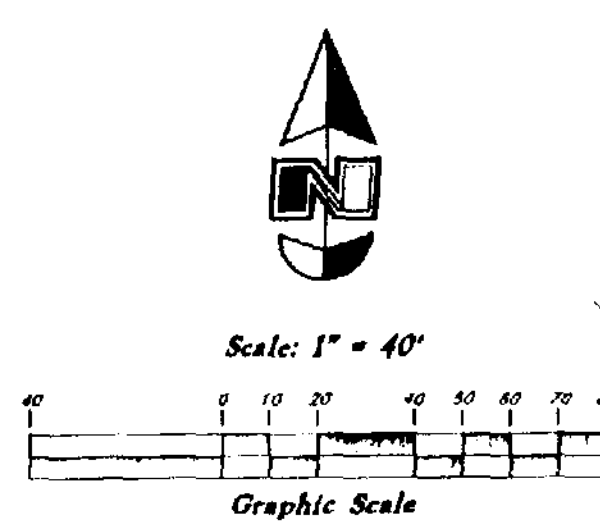


Ascension Lutheran Church Subdivision

A part of the Southeast 1/4 of Section 5 and the Northeast 1/4 of Section 8, T6N, R1W, SLB & M, U.S. Survey
Harrisville City, Weber County, Utah

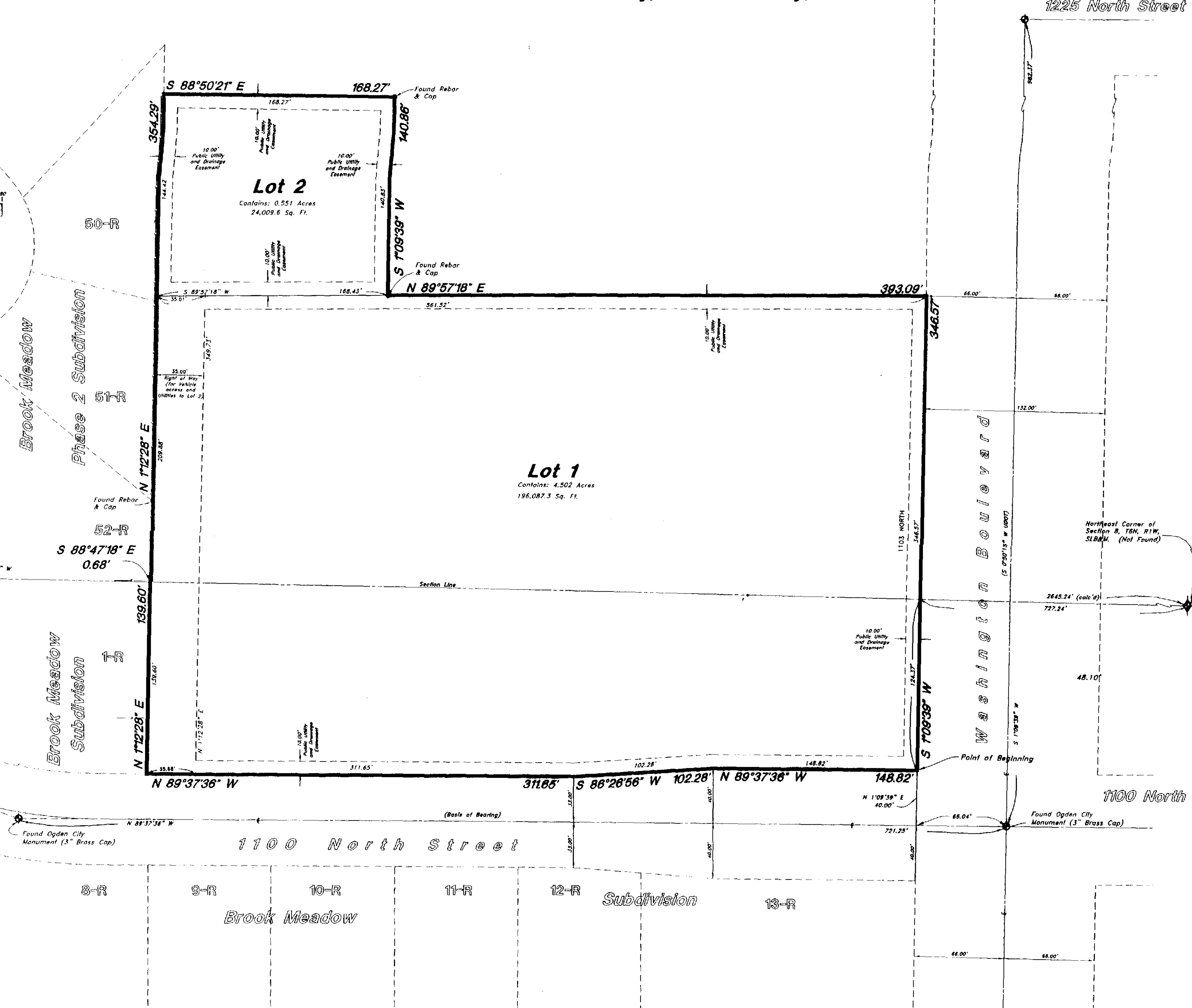
Arralives:
This Survey and Subdivision plat was requested by Mrs. Leslie Whited Vance for the purpose of subdividing a parcel of land into two (2) lots. Basis of Bearing is North 89°37'36" West from Monuments found on the centerline of 1100 North Street from Washington Blvd. to a centerline monument 721.25' West of Washington Blvd. No additional property corners were set. Also found several rebar in Brook Meadow Phase No. 2 Subdivision, Harrisville City, Weber County, which were honored.



LEGEND
 ▲ Set Nail & Washer
 ● Set Rebar & Cap w/ Fencepost
 ⊕ Set Hub & Tick
 ⊕ Monument to be set
 (Rad.) Radial Line
 (N/R) Non-Radial Line

North 1/4 Corner of Section 8, T6N, R1W, SLB&M (Not Found)

GREAT BASIN ENGINEERING NORTH
 CONSULTING ENGINEERS AND SURVEYORS
 5746 South 1475 East - Suite 200
 Ogden, Utah 84403
 P.O. Box 130048, Ogden, Utah 84413
 Phone (801)244-6519 Salt Lake City (801)261-0222 Fax (801)262-7544



SURVEYOR'S CERTIFICATE

I, Mark Babbitt, a Registered Professional Land Surveyor in the State of Utah, do hereby certify that this plat of Ascension Lutheran Church Subdivision in Weber County, Utah has been correctly drawn to the designated scale and is a true and correct representation of the following description of lands included in said subdivision, based on data compiled from records in the Weber County Recorder's Office, Harrisville City Engineer office and of a survey made on the ground.

Signed this 20th day of October, 2003.

166484
 License No. *Mark Babbitt*
 Mark Babbitt

OWNER'S DEDICATION

I, the undersigned owners of the hereon described tract of land, hereby set apart and subdivide the same into lots as shown on this plat, and name said tract Ascension Lutheran Church Subdivision and hereby dedicate, grant and convey to Harrisville City, Weber County, Utah all those parts or portions of said tract of land designated as easements for public utility and drainage purposes as shown hereon, the same to be used for the installation, maintenance, and operation of public utility service lines and drainage, as may be authorized by Harrisville City, Utah with no buildings or structures being erected within such easement.

Signed this 21st day of October, 2003.

Don E. Brown
 Don E. Brown - Congregational President

ACKNOWLEDGMENT

State of Utah } ss
 County of Box Elder
 On the 21st day of October, 2003, personally appeared before me Don E. Brown, who being by me duly sworn did say that he is the Congregational President of Ascension Lutheran Church, and that said instrument was signed in behalf of said Church by a resolution of its Members, and Don E. Brown acknowledged to me that said Church executed the same.

Residing at Brigham City Becky Miller
 (Notary Public Commissioned in Utah)
 Commission Expires: March 20, 2006 Becky Miller
 (Print Name)

BOUNDARY DESCRIPTION

A part of the Southeast Quarter of Section 5 and the Northeast Quarter of Section 8, Township 6 North, Range 1 West, Salt Lake Base and Meridian, U.S. Survey:
 Beginning at the intersection of the West Right of Way line of Washington Boulevard and the North Right of Way line of 1100 North Street, which is 66.04 feet North 89°37'36" West and 40.00 feet North 1°09'39" East from an Ogden City Brass Monument at the centerline intersection of Washington Boulevard and 1100 North Street, also being the Northwest corner of Brook Meadow Subdivision, Harrisville City, Weber County, Utah, which is 727.24 feet North 88°47'18" West along a Section line and 124.37' South 1°09'32" West along the said West Right of Way line of Washington Boulevard, from the Northeast corner of said Section 8, and running thence four (4) courses along the North and East boundary line of said Brook Meadow Subdivision subdivision:
 North 89°37'36" West 148.82 feet; South 86°26'56" West 102.28 feet;
 North 89°37'36" West 311.65 feet; and North 1°12'28" East 139.60 feet to the South boundary line of Brook Meadow Phase 2 Subdivision, Harrisville City, Weber County, Utah, and running thence South 88°47'18" East 0.68 feet and North 1°12'28" East 354.29 feet along the South and East boundary line of said Brook Meadow Phase 2 Subdivision; thence South 88°50'21" East 168.27 feet; thence South 01°09'39" West 140.86 feet; thence North 89°57'18" East 393.09 feet to said West Right of Way line of Washington Boulevard; thence South 01°09'39" West 346.57 feet to the point of beginning.
 Contains 5.053 acres

CITY ATTORNEY'S OFFICE
 Approved by the City Attorney's Office.
 Signed this 20th day of October, 2003.

HARRISVILLE CITY ENGINEER
 I have examined the foregoing plat of Ascension Lutheran Church Subdivision and concur with the legal description and lines of Survey as they are presented. In my opinion this plat meets the applicable ordinances prerequisite to approval by the South
 Signed this 23rd day of October, 2003.

HARRISVILLE CITY PLANNING COMMISSION
 Approved by Harrisville City Planning Commission on the 4th day of November, 2003.

HARRISVILLE CITY APPROVAL
 This plat and the dedications offered hereon, are approved and accepted by the Mayor of Harrisville City, Utah this 28th day of October, 2003.
 Mayor *Paul White*
 Attest *Donna B. Jett*
 City Recorder

WEBER COUNTY RECORDER
 ENTRY NO. 1989447 FEE PAID
 \$32.00 FILED FOR RECORD AND
 RECORDED ON NOV-2-2003 AT
 1:13PM IN BOOK 58 OF OFFICIAL
 RECORDS, PAGE 86 RECORDED
 FOR ASCENSION LUTHERAN
 CHURCH
 DDUG CREFFS
 WEBER COUNTY RECORDER
 BY: *Karla B. Jittle*
 DEPUTY
 03NS07P

5886