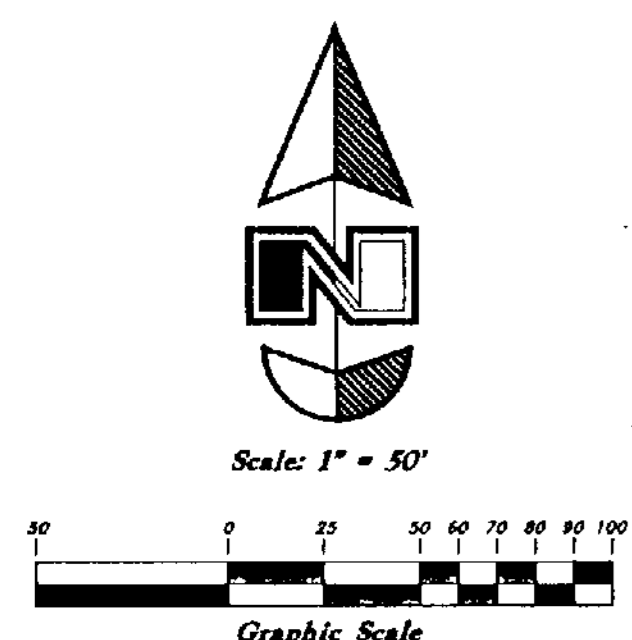


Hidden Meadows

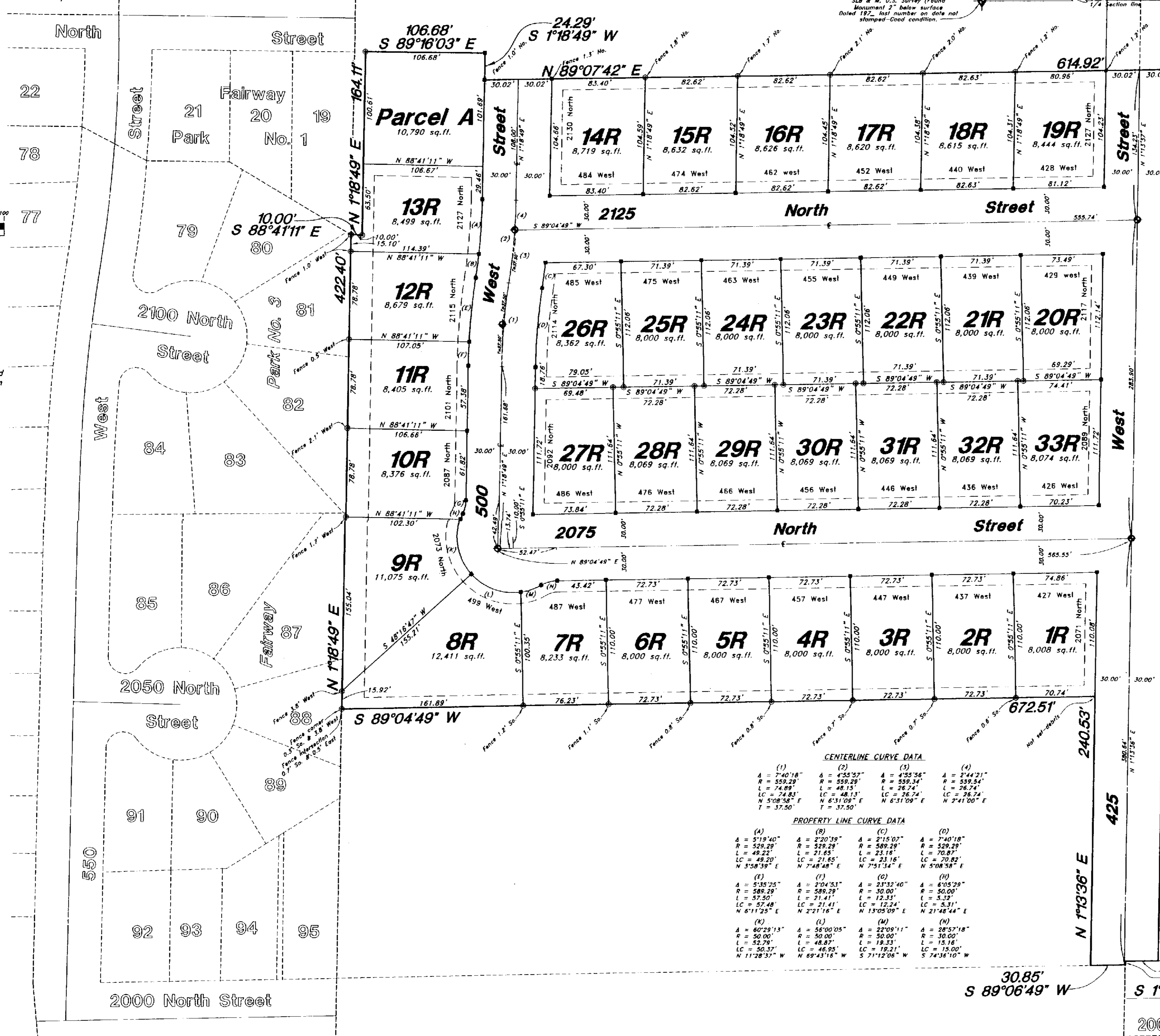
A part of the Southeast 1/4 of Section 31, T7N, R1W, SLB & M, U.S. Survey Harrisville City, Weber County, Utah

Narrative:
This Survey and Subdivision plat was requested by Mr. John Hansen for the purpose of platting thirty-three (33) residential lots and Parcel A. Brass Cap Monuments were found at the Center of Section 31, and the Center of Section 32, a Hub & Tack was found at the East 1/4 corner of Section 32, T7N, R1W, SLB&M, U.S. Survey. A line bearing South 89°39'06" West between the monument at the Center of Section 32 and the Hub & Tack was used as the basis of bearings. Property corners were monumented as depicted on this drawing.



LEGEND
▲ Set Nail & Washer
● Set Rebar & Cap
⊙/⊙ Fencepost
⊙ Set Hub & Tack
⊙ Monument to be set
(Rad.) Radial Line
(N/R) Non-Radial Line
R Restricted Lot (no basements allowed)

NOTE:
Lots 8R through 13R are restricted from planting trees of any kind within the rear 20 feet of the lot.



CENTERLINE CURVE DATA

(1) A = 7'40"18"	(2) A = 4'58"37"	(3) A = 4'58"36"	(4) A = 2'44"21"
R = 559.29'	R = 559.29'	R = 559.29'	R = 559.29'
L = 74.89'	L = 48.15'	L = 48.15'	L = 26.74'
LC = 74.83'	LC = 48.13'	LC = 48.13'	LC = 26.74'
N 5'08"58" E	N 6'31"09" E	N 6'31"09" E	N 2'41"00" E
T = 37.50'	T = 37.50'	T = 37.50'	T = 37.50'

PROPERTY LINE CURVE DATA

(A) A = 5'19"40"	(B) A = 2'20"36"	(C) A = 2'18"07"	(D) A = 7'40"18"
R = 528.29'	R = 528.29'	R = 528.29'	R = 528.29'
L = 49.22'	L = 21.85'	L = 23.18'	L = 70.87'
LC = 49.20'	LC = 21.85'	LC = 21.16'	LC = 70.82'
N 5'39"39" E	N 7'48"48" E	N 7'51"14" E	N 5'08"58" E
(E) A = 5'38"25"	(F) A = 2'04"53"	(G) A = 2'32"40"	(H) A = 6'05"29"
R = 589.29'	R = 589.29'	R = 30.00'	R = 50.00'
L = 57.50'	L = 21.41'	L = 12.24'	L = 3.32'
LC = 57.48'	LC = 21.41'	LC = 12.24'	LC = 5.31'
N 5'08"58" E	N 2'21"16" E	N 13'05"09" E	N 21'48"44" E
(I) A = 6'02"13"	(J) A = 6'02"05"	(K) A = 6'02"11"	(L) A = 6'02"18"
R = 50.00'	R = 50.00'	R = 50.00'	R = 50.00'
L = 32.79'	L = 48.87'	L = 18.33'	L = 15.18'
LC = 50.32'	LC = 48.93'	LC = 18.21'	LC = 15.00'
N 11'28"37" W	N 6'43"16" W	S 71'12"06" W	S 74'36"10" W

SURVEYOR'S CERTIFICATE
I, Gary L. Newman, a Registered Professional Land Surveyor in the State of Utah, do hereby certify that this plat of Hidden Meadows in Weber County, Utah has been correctly drawn to the designated scale and is a true and correct representation of the following description of lands included in said subdivision, based on data compiled from records in the Weber County Recorder's Office, Harrisville City Engineer office and of a survey made on the ground.
Signed this 26th day of April, 2002.
4778 License No.
Gary L. Newman

OWNER'S DEDICATION
We, the undersigned owners of the hereon described tract of land, hereby set apart and subdivide the same into lots and streets as shown on this plat, and name said tract Hidden Meadows and hereby dedicate, grant and convey to Harrisville City, Weber County, Utah all those parts or portions of said tract of land designated as streets, the same to be used as public thoroughfares forever, and also dedicate to Harrisville City, Parcel A for a detention basin also those certain strips as easements for public utility and drainage purposes as shown hereon, the same to be used for the installation, maintenance, and operation of public utility service lines and drainage, as may be authorized by Harrisville City, Utah with no buildings or structures being erected within such easement.
Signed this 26th day of April, 2002.
John W. Hansen - Managing Member

ACKNOWLEDGMENT
Terry F. Rudd, Authorized Agent
Corporation of the Presiding Bishop of the Church of Jesus Christ of Latter-day Saints - a Utah Corporation Sole
State of Utah }
County of Weber }
On the 26 day of April, 2002, personally appeared before me John W. Hansen who being by me duly sworn did say that he is the Managing Member of JTJ L.L.C., and that said instrument was signed in behalf of said Limited Liability Company by a resolution of its Members, and John W. Hansen acknowledged to me that said Limited Liability Company executed the same.
Residing at: N Ogden
Commission Expires: 3-1-05
Krista Spruner
State of Utah }
County of Salt Lake }
On the 2nd day of May, 2002, personally appeared before me, Terry F. Rudd who being by me duly sworn did say that he is an Authorized Agent of the Corporation of the Presiding Bishop of the Church of Jesus Christ of Latter Day Saints a Utah Corporation Sole, and that said instrument was signed in behalf of said corporation by a resolution of its Board of Directors, and acknowledged to me that said Corporation executed the same.
Residing at: Salt Lake County
Commission Expires: 9-25-04
Gordon R. Jessee

BOUNDARY DESCRIPTION
A part of the Southeast Quarter of Section 31, Township 7 North, Range 1 West, Salt Lake Base and Meridian, U.S. Survey:
Beginning at a point which is 538.13 feet South 89°52'42" West along the Quarter Section line and 840.82 feet South 1°13'36" West from the Northeast corner of said Quarter Section; running thence South 1°13'36" West 795.65 feet to the North right of way line of 2000 North Street; thence South 89°16'44" West 29.18 feet along said North right of way line; thence South 1°28'12" West 3.21 feet; thence South 89°06'49" West 30.85 feet; thence North 1°13'36" East 240.53 feet; thence South 89°04'49" West 672.51 feet to the East boundary of Fairway Park No. 3, Harrisville City, Weber County, Utah; thence North 1°18'49" East 422.40 feet along said East boundary; thence South 88°41'11" East 10.00 feet; thence North 1°18'49" East 164.11 feet; thence South 89°16'03" East 106.68 feet; thence South 1°18'49" East 164.11 feet; thence North 89°07'42" East 614.92 feet to the point of beginning.
Contains 9.741 Acres

CITY ATTORNEY'S OFFICE
Approved by the City Attorney's Office.
Signed this 4th day of June, 2002.
GREAT BASIN ENGINEERING NORTH
CONSULTING ENGINEERS AND SURVEYORS
4774 South 1300 West - Suite 102
Riverton, Utah 84403
P.O. Box 6307, Ogden, Utah 84409
Ogden (801)394-4815 Salt Lake City (801)521-0222 Fax (801)392-7544

HARRISVILLE CITY ENGINEER
I have examined the foregoing plat of Hidden Meadows and concur with the legal description and lines of Survey as they are presented. In my opinion this plat meets the applicable ordinances prerequisite to approval by the South
Signed this 4th day of JUNE, 2002.
Kent L. Jones
Harrisville City Engineer

HARRISVILLE CITY PLANNING COMMISSION
Approved by Harrisville City Planning Commission on the 18th day of July, 2002.
City Chairman

HARRISVILLE CITY APPROVAL
This plat and the dedications offered hereon, are approved and accepted by the Mayor of Harrisville City, Utah this 20 day of June, 2002.
Attest Brenda K. Colburn
City Clerk

WEBER COUNTY RECORDER
ENTRY NO. 1810795 FEE PAID \$63.00 FILED FOR RECORD AND RECORDED 27 AUG-2002 AT 4:59 PM IN BOOK 56 OF OFFICIAL RECORDS, PAGE 38 RECORDED FOR HARRISVILLE CITY
DOUG CROFTS
WEBER COUNTY RECORDER