

DRAWING NUMBER

000033

PLAN HOLD CORPORATION • IRVINE, CALIFORNIA  
REORDER BY NUMBER 0754R  
POSTER SIZE OF PRINT ON THIS LINE

DRAWING NUMBER

000033

PLAN HOLD CORPORATION • IRVINE, CALIFORNIA  
REORDER BY NUMBER 0754R  
POSTER SIZE OF PRINT ON THIS LINE

DRAWING NUMBER

000033

PLAN HOLD CORPORATION • IRVINE, CALIFORNIA  
REORDER BY NUMBER 0754R  
POSTER SIZE OF PRINT ON THIS LINE

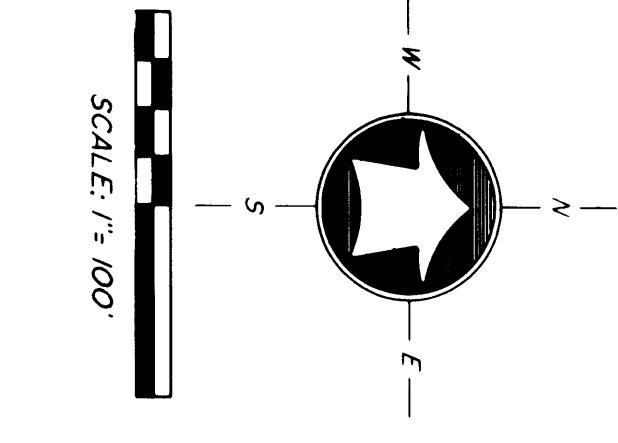
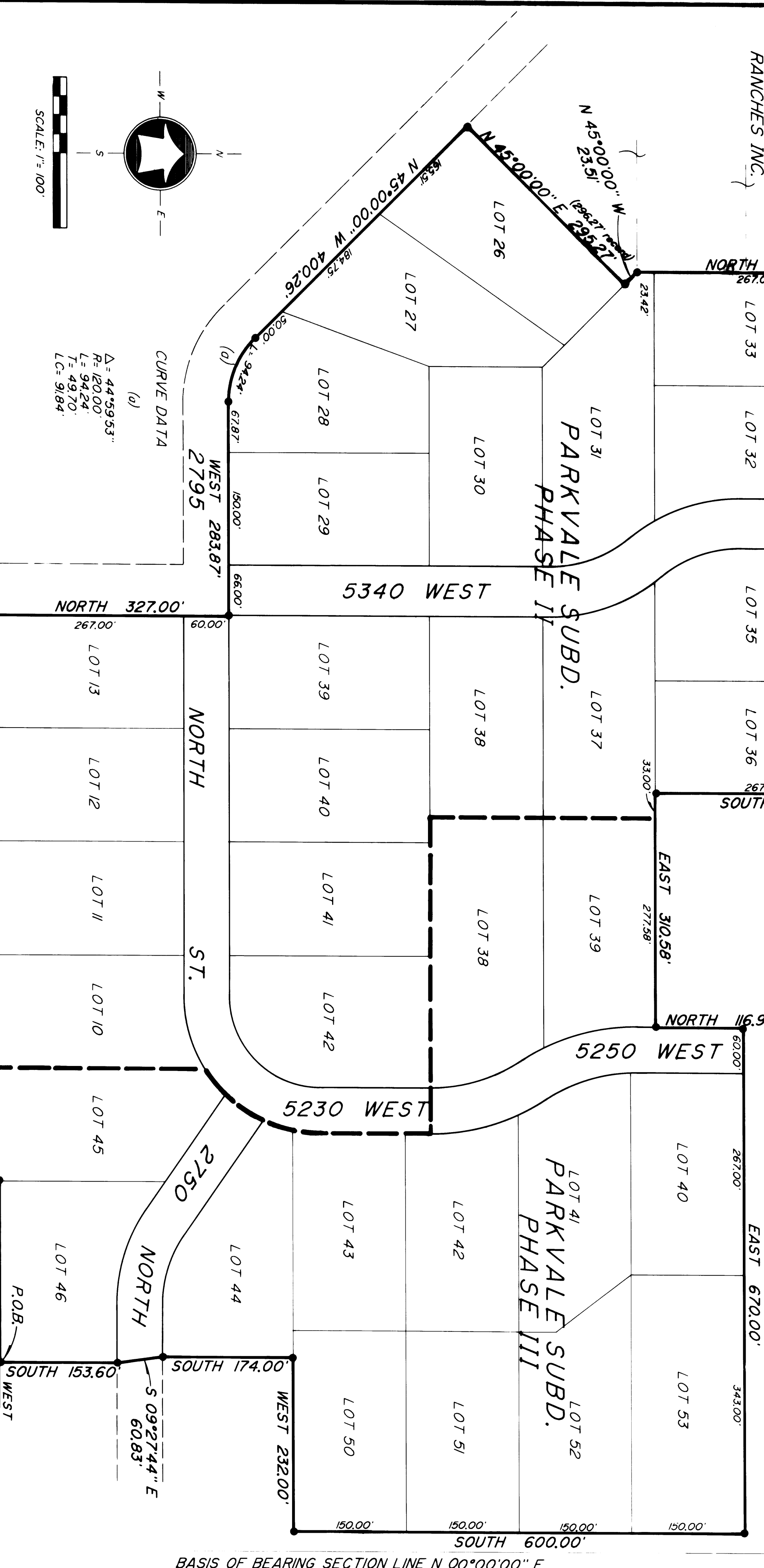
DRAWING NUMBER

000033

PLAN HOLD CORPORATION • IRVINE, CALIFORNIA  
REORDER BY NUMBER 0754R  
POSTER SIZE OF PRINT ON THIS LINE

VACATING PLAT  
PLAIN CITY DISTRICT  
WEBER COUNTY

VACATING LOTS 10-13, 26-42  
OF PARKVALE SUBDIVISION  
PHASE II, & LOTS 38-46,  
50-53 OF PARKVALE  
SUBDIVISION, PHASE III,  
A PART OF THE SOUTHEAST  
QUARTER OF SECTION 30, T7N,  
R2W, SLB 8 M.



CURVE DATA  
(a) Δ: 44°39'53\"/>

P: 420.00'  
L: 94.24'  
LC: 9.89'

SET & RECORD W/ CAD  
MAPPED 08/17/26 (TYP.)  
JUNE 1987



SURVEYOR'S CERTIFICATE  
I, K. Greg Hansen, do hereby certify that I am a Registered Land Surveyor, and that I have made a survey of the property described hereon and is a true and correct representation of the same.

REMARKS  
THE PURPOSE OF THIS SURVEY WAS TO ESTABLISH AND REDEFINITION OF THE BOUNDARIES OF LOTS 26-53 OF PARKVALE SUBDIVISION PHASE II, LOTS 38-46 AND 50-53 FOR THE PURPOSE OF VACATING SAID PROPERTY. THE SURVEY WAS CONDUCTED BY THE MEAL SERVICE COMPANY OF IRVINE, CALIFORNIA, UNDER THE CLOSE SUPERVISION OF THE SURVEYOR. THE CORNERS WERE SET BY THE SURVEYOR AND WERE CHECKED BY THE SURVEYOR. THE CORNERS WERE SET BY THE SURVEYOR AND WERE CHECKED BY THE SURVEYOR. THE CORNERS WERE SET BY THE SURVEYOR AND WERE CHECKED BY THE SURVEYOR.

COUNTY ENGINEER  
I HEREBY CERTIFY THAT THIS OFFICE HAS  
EXAMINED THIS PLAT AND IT IS CORRECT IN  
ACCORDANCE WITH INFORMATION ON FILE IN  
THIS OFFICE.

APPROVAL AS TO FORM  
DATE

APPROVED THIS DAY OF  
A.D. 1987 BY THE WEBER COUNTY PLANNING  
COMMISSION.

COUNTY COMMISSION  
PRESENTED TO THE BOARD OF WEBER CO.  
COMMISSIONERS THIS DAY OF  
THIS SUBDIVISION WAS APPROVED AND  
ACCEPTED

RECEIVED  
DATE: \_\_\_\_\_  
FEE: \_\_\_\_\_  
PAGE: \_\_\_\_\_

County Recorder No. \_\_\_\_\_  
State of Utah, County of Weber  
Recorded and Filed at the Request  
of: \_\_\_\_\_  
DATE: \_\_\_\_\_  
FEE: \_\_\_\_\_  
PAGE: \_\_\_\_\_