



Scale: 1" = 50'



Graphic Scale

NARRATIVE

This Property & Topographic Survey were requested by Mr. Gage Fraerer of Century 21 in behalf of Weber County School District for the purpose of establishing the boundaries of this property for a future elementary school site. This property was previously surveyed by Great Basin Engineering (W.O. #99N329) in December 1999 for the Robson Family. Brass Cap monuments were found at the East 1/4 corner and the Northeast corner of Section 33, T7N, R2W, SLB&M U.S. Survey. A line bearing South 1°21'54" East between these monuments was used as the basis of bearings. Property corners were monumented as depicted on this drawing.

Plain City

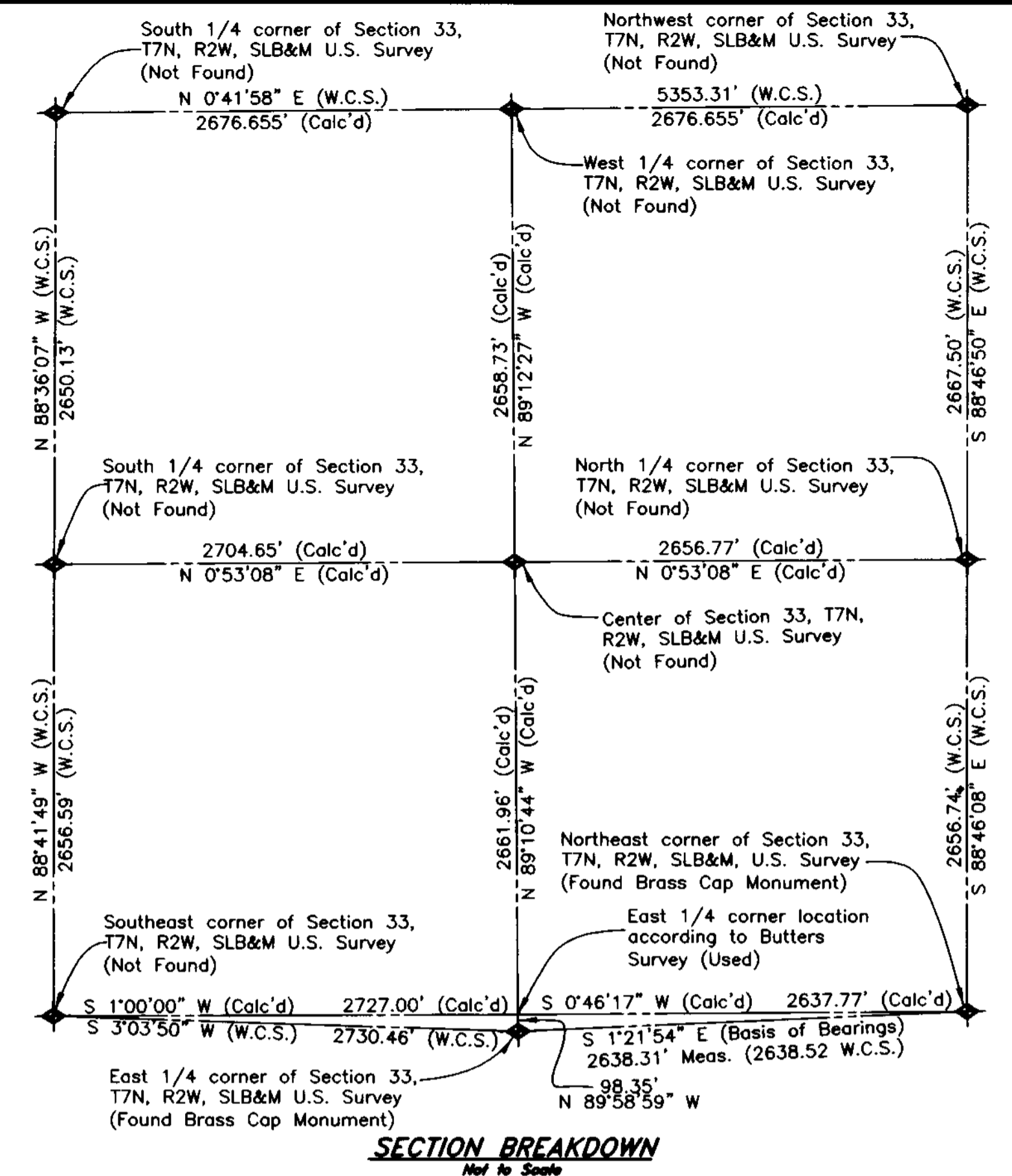
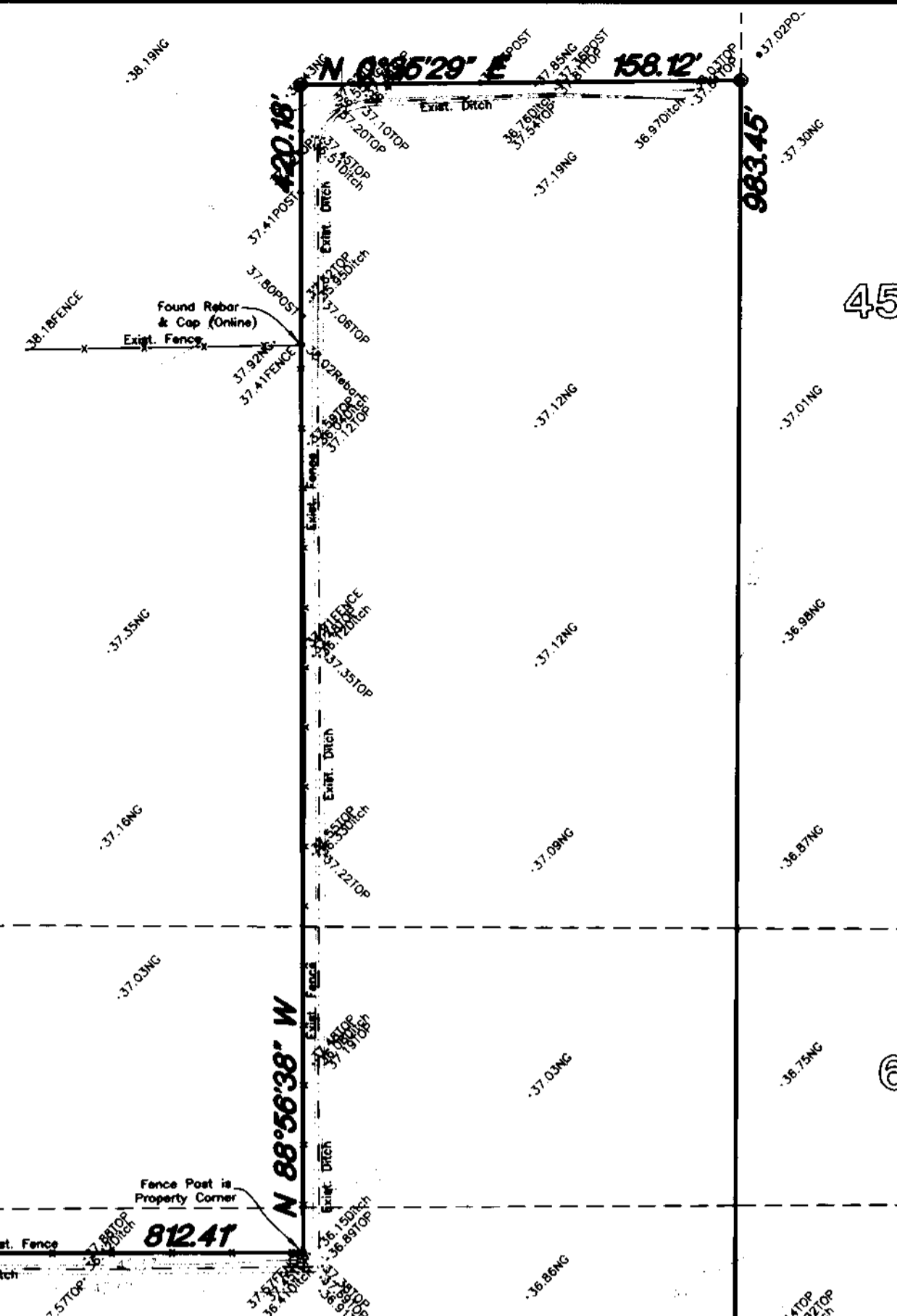
25
Survey Plat

24

Contains 13.976 Acres

West Street

East 1/4 corner of Section 33, T7N, R2W, SLB&M U.S. Survey (Found Brass Cap Monument)



SECTION BREAKDOWN

Not to Scale

BOUNDARY DESCRIPTION

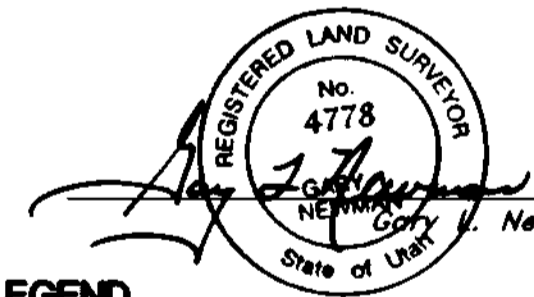
A part of the East Half of Section 33, Township 7 North, Range 2 West, Salt Lake Base and Meridian, U.S. Survey;
 Beginning at a point on the West right-of-way line of 3600 West Street; said point being 742.85 feet North 88°46'08" West along the Section line and 2006.18 feet South 1°13'53" West from the Northeast corner of said Section 33; running thence South 1°13'53" West 969.59 feet along said West right-of-way line to a point 5.0 feet South of the centerline of an existing concrete ditch; thence North 88°20'23" West 558.99 feet to a fence line extended; thence North 1°03'15" East 812.41 feet along said fence and fence line extended to a fence corner; thence North 88°56'38" West 420.18 feet along said fence and fence extended; thence North 0°35'29" East 158.12 feet; thence South 88°32'43" East 983.45 feet to the point of beginning.

Contains 13.976 Acres

SURVEYOR'S CERTIFICATE

I, Gary L. Newman, do hereby certify that I am a Registered Professional Land Surveyor, and that I hold Certificate No. 4778, as prescribed by the Laws of the State of Utah, and I have made a survey of the above described property. I further certify that the above plat correctly shows the true dimensions of the property surveyed.

Date 1-6-2005



LEGEND

—C—	Centerline	TA	Top of Asphalt	C.M.P.	Corrugated Metal Pipe
—UGF—	Buried Telephone line	EA	Edge of Asphalt	R.C.P.	Reinforced Concrete Pipe
—OHT—	Overhead Telephone line	SP	Service Pole	C.C.W.C.	Edge of Concrete
—OHP—	Overhead Power line	LP	Light Pole	R.W.A.L.L.	Retaining Wall
—UGP—	Power line	PP	Power Pole	SMH	Sewer Manhole
—S—	Sanitary Sewer line	TP	Telephone Pole	WV	Water Valve
—W—	Culinary Water line	TH	Fire Hydrant	CB	Catch Basin
—G—	Gas line	DIT	Flowline of Ditch	DV	Diversion Box
—SD—	Storm Drain line	TOE	Top of Slope	TC	Top of Curb
—SW—	Secondary Waterline	TOP	Top of Slope	SW	Sidewalk
—LD—	Land Drain line	CO	Cleanout	GAS	Gas line Marker
—IW—	Irrigation Waterline	TC	Top of Curb	GUY	Guy Wire
—F—	Fence	MG	Natural Ground	BLDG	Building Corner
—P—	Post	FC	Fence	TH	Fire Hydrant
—W.M.—	Water Meter	PP	Power Pole	WV	Water Valve
—G.M.—	Gas Meter	DMH	Drain Manhole	LP	Light Pole
—T.B.—	Telephone Box	x99.00	Spot Elevation	—	Power Pole w/guy
—S.M.—	Sewer Manhole	—	Asphalt	—	Deciduous Tree
—D.M.—	Drain Manhole	—	Concrete	—	Coniferous Tree
—W.M.—	Water Manhole	—	Building	—	Set Nail & Washer
—C.B.—	Cleanout Box	—	Catch Basin	—	Set Rebar & Cap
				—	w/ Fencepost
				—	Set Hub & Tack

RECEIVED
 JAN 19 05
 Weber County Surveyor

Property Survey

GREAT BASIN ENGINEERING NORTH
 5746 South 1475 East - Suite 200
 Ogden, Utah 84403
 P.O. Box 130048, Ogden, Utah 84413
 Ogden (801)304-8515 Salt Lake City (801)301-8252 Fax (801)302-7544

SCALE: 1" = 50'	DATE: 29 Dec, 2004	DRWG. NO.
DRAWN: AH	REVISIONS:	04N348
04N348	003401	

Plain City Elementary
 A part of the East 1/2 of Section 33, T7N, R2W, SLB&M, U.S. Survey
 Plain City, Weber County, Utah

2006.18'
 Northeast corner of Section 33, T7N, R2W, SLB&M, U.S. Survey (Found Brass Cap Monument [Dec. 1999]).
 742.85'
 N 88°46'08" W