


W 1/4 cor. Sec. 8, T7N, R1E, SLB&M, Weber Co. cone. monument # 71207-3241. Mon. has occupied this position since April of 1966, prior to that date it occupied a position approximately 13 feet west of this location for an undetermined time, Fnd in good condition. Point #1005

N 1/4 cor. Sec. 8, T7N, R1E, SLB&M, Weber Co. monument # 71208-3342. Mon. has occupied this position since 1989, and is a replacement of the original government Stone, Fnd in good condition.

CURVE DATA						
CURVE	DELTA	RADIUS	TANGENT	LENGTH	CHORD BRG	CHORD DIST
C1	65°41'03"	30.000'	19.365'	34.392'	N 32°08'59" W	32.540'
C2	155°19'29"	55.000'	251.460'	149.101'	N 12°40'14" E	107.460'
C3	134°14'53"	75.00'	177.758'	175.703'	S 06°43'03" E	138.202'
C4	154°19'15"	45.000'	197.437'	121.203'	S 00°41'33" W	87.750'
C5	21°28'19"	450.000'	85.321'	168.640'	N 12°17'11" W	167.655'
C6	41°00'00"	200.000'	74.777'	143.117'	N 18°56'59" E	140.083'
C7	39°08'44"	250.000'	88.887'	170.804'	N 19°52'37" E	167.502'
C8	19°00'00"	650.000'	108.773'	215.548'	S 41°03'01" E	214.562'
C9	24°30'01"	299.200'	64.963'	127.941'	S 11°57'28" E	126.966'

WEBER COUNTY SURVEYOR'S CERTIFICATE
 I, Ernest D. Rowley, am a licensed surveyor in the State of Utah holding license number 89-171781-2201, and having been duly appointed as the Chief Deputy Surveyor for the Weber County Surveyor's Office, do hereby certify that we, of said Office have made a survey of the tract of land shown herein. That this plat has been prepared from the original field notes made during a survey of this tract of land and from the notes and records of the County Surveyor's Office and County Recorder's Office. That this plat is a true and accurate record of that survey.



BASIS OF BEARING
 Basis of bearing is N 00°45'13" E between the Southwest and West Quarter Corner's of Section 8, Township 7 North, Range 1 East, Salt Lake Base and Meridian, as noted on this plat.

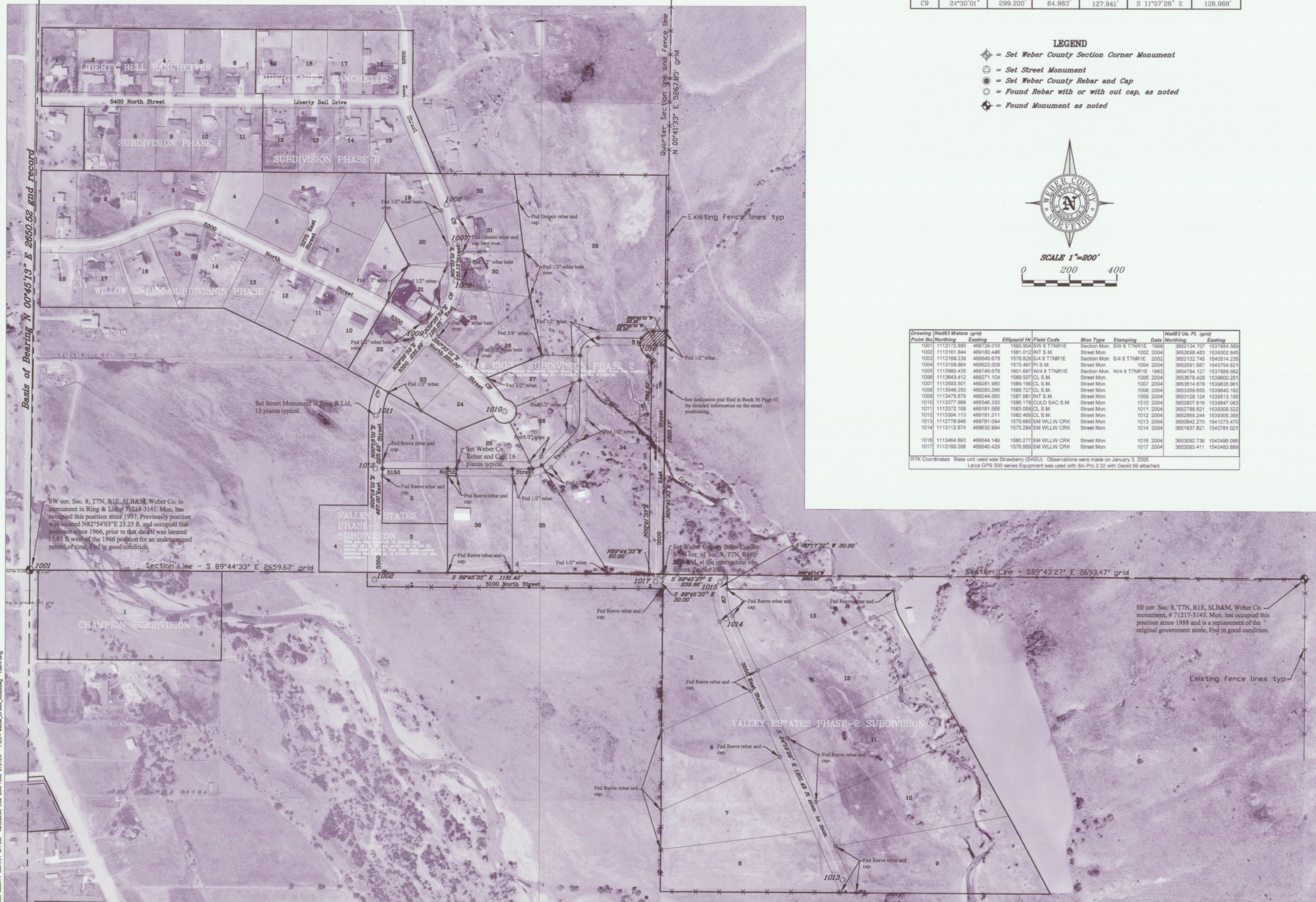
NARRATIVE
 The purpose of this survey is to prepare a dedication plat for 3500 East Street and the vacating of 5150 North Street. The vacating process followed directions from the owners and county attorney's office, in which deeds were prepared by this survey to define the limits of the street which was to be given to each adjoining. The basic premise of this vacating was to extend the current lot lines to the center of the street. The road shown as 3500 East Street was dedicated by plat recorded as Book 56 Page 47 of the Weber County Plat Records. I would refer the reader to that plat for a narrative on the identification and establishment of the lines of ownership as related to this street and the subdivisions involved. The vacated street area was surveyed and monumented as shown hereon as directed by the County Attorney's Office and the wishes of the land owners. The ordinance vacating the street, which includes the descriptions which were prepared as a result of this survey, is recorded as entry # 1877175, Book 2266 Page 2498. Only the corners shown hereon were set. During the process of this survey a subdivision was being prepared for Willow Creek Subdivision-Phase 3, creating Lots 1 & 2. Phase 3 platted over Lots 26 & 34 of Willow Creek Subdivision-Phase 2. Also, phase 3 utilized the dedication plat 56-47 to create the east line of phase 3 subdivision. Willow Creek Subdivision-Phase 3 is not shown on this plat. The rebar and cap monuments set for the vacating and west boundary of 3500 East Street and the brass cap for the south quarter corner of section 8, were set prior to the recording of Willow Creek subdivision-Phase 3. However, the street monuments have been set after that subdivision was recorded as part of this survey. 3500 East Street was monumented as dedicated. Also, there are additional street monuments being set for the Willow Creek Subdivision Phase 2, Valley Estates Phase-1 Subdivision, and Valley Estates Phase-2 Subdivision. These are being set due to the fact that the time allotted the developer to install the monuments has expired. Since these monuments have not been set and the escrow funds have been forfeited it is therefore our responsibility to install the monuments. The other subdivisions shown on this plat have not been sufficiently surveyed to be able to identify the location of the street monument positions and are not being monumented as part of this survey.

- LEGEND**
- ◆ = Set Weber County Section Corner Monument
 - ⊙ = Set Street Monument
 - = Set Weber County Rebar and Cap
 - = Found Rebar with or without cap, as noted
 - ⊕ = Found Monument as noted



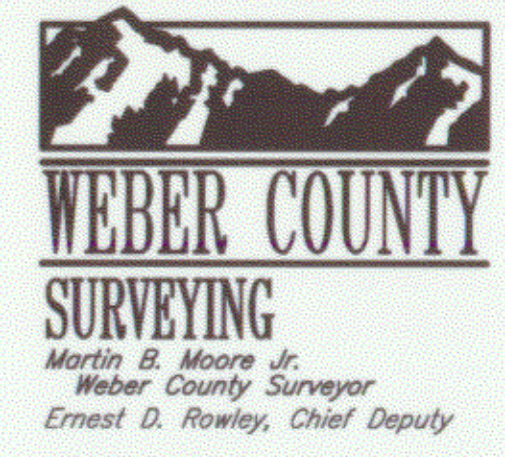
Drawing	Nad83 Meters (grid)	Nad83 U.S. Ft. (grid)							
Point No.	Northing	Easting	Ellipsoid Ht	Field Code	Mon Type	Stamping	Date	Northing	Easting
1001	1113172.885	466730.076	1590.904	SW 8 T7NR1E	Section Mon.	SW 8 T7NR1E	1998	3652134.707	1537854.589
1002	1113181.844	469190.449	1581.012	INT S.M.	Street Mon.	SW 8 T7NR1E	1002 2004	3652098.493	1539302.845
1003	1113169.239	469549.678	1576.820	S/4 8 T7NR1E	Section Mon.	S/4 8 T7NR1E	2002	3652122.745	1540514.235
1004	1113189.864	469523.009	1575.497	PI S.M.	Street Mon.		1004 2004	3652091.987	1540754.821
1005	1113980.430	468748.676	1601.697	W/4 8 T7NR1E	Section Mon.	W/4 8 T7NR1E	1963	3654784.127	1537886.562
1006	1113643.412	469271.104	1598.507	CL S.M.	Street Mon.		1206 2004	3653676.428	1539800.281
1007	1113593.501	468281.980	1589.156	CL S.M.	Street Mon.		1007 2004	3653614.678	1539635.061
1008	1113546.290	468283.266	1588.727	CL S.M.	Street Mon.		1008 2004	3653359.655	1539640.182
1009	1113475.679	468244.550	1587.961	INT S.M.	Street Mon.		1009 2004	3653128.124	1539513.195
1010	1113377.998	469345.330	1586.178	CHILD SAC S.M.	Street Mon.		1010 2004	3652807.618	1539847.083
1011	1113372.189	469181.566	1583.058	CL S.M.	Street Mon.		1011 2004	3652788.521	1539905.522
1012	1113304.113	469181.211	1582.489	CL S.M.	Street Mon.		1012 2004	3652695.244	1539905.355
1013	1112778.948	469781.094	1570.985	SM WLLW CRK	Street Mon.		1013 2004	3652842.270	1541273.470
1014	1113112.874	469630.994	1575.284	SM WLLW CRK	Street Mon.		1014 2004	3651937.821	1542781.021
1016	1113484.893	469544.149	1580.277	SM WLLW CRK	Street Mon.		1016 2004	3653092.736	1540496.096
1017	1113180.298	469542.429	1578.959	SM WLLW CRK	Street Mon.		1017 2004	3652093.411	1540483.888

RTK Coordinates: Base unit used was Strawberry (SASU). Observations were made on January 3, 2005. Leica GPS 500 series Equipment was used with SK-Pro 2.02 with Geoid 99 attached.



RECEIVED
 JAN 20 2005
 Weber County Surveyor

Road Dedication Survey for 3500 East Street
 PART OF THE SW 1/4 OF SECTION 8
 TOWNSHIP 7 NORTH, RANGE 1 EAST,
 SALT LAKE BASE AND MERIDIAN



Surveyed By
 MDJ, BPA
 SURVEY DATE Aug. 2001
 Plat Prepared By
 E. Rowley
 Chief Deputy
 DRAWING DATE Jan. 20, 2005
 Approved for Filing By
 M. Moore
 County Surveyor

2380 Washington Blvd. Rm 260
 Ogden, Utah 84401
 (801) 399-8020
 FAX: (801) 399-8316

003406
 SURVEY FILING NUMBER

