







**Legend**

-  = EXISTING PAVEMENT
-  = EXISTING CURB & GUTTER
-  = EXISTING SIDEWALK
-  = FOUND STREET MONUMENT
-  = SET PLUG IN CURB
-  = FOUND REBAR

**Narrative**

THE PURPOSE OF THIS PLAT IS TO SHOW A RECORD OF SURVEY FOR THE STAKING OF THE LINE BETWEEN LOTS 36 AND 37, FOREST GREEN ESTATES SUBDIVISION, ACCORDING TO THE OFFICIAL PLAT THEREOF ON FILE IN THE WEBER COUNTY RECORDER'S OFFICE. THE FRONT CORNER OF SAID LOT LINE WAS SET WITH A LEAD PLUG AND TACK IN THE TOP BACK OF CURB AT THE EXTENSION OF SAID LOT LINE. A REBAR WAS FOUND AT THE BACK CORNER OF SAID LOT LINE.

**Basis of Bearings**

THE BASIS OF BEARINGS FOR THIS PLAT IS THE FOREST GREEN ESTATES SUBDIVISION, ACCORDING TO THE OFFICIAL PLAT THEREOF ON FILE IN THE WEBER COUNTY RECORDER'S OFFICE, DETERMINED LOCALLY BY THE LINE BETWEEN THE TWO FOUND STREET MONUMENTS ON THE CENTER LINE OF 1650 EAST STREET, SHOWN HEREON AS: S49°00'00"E

**Boundary Description**

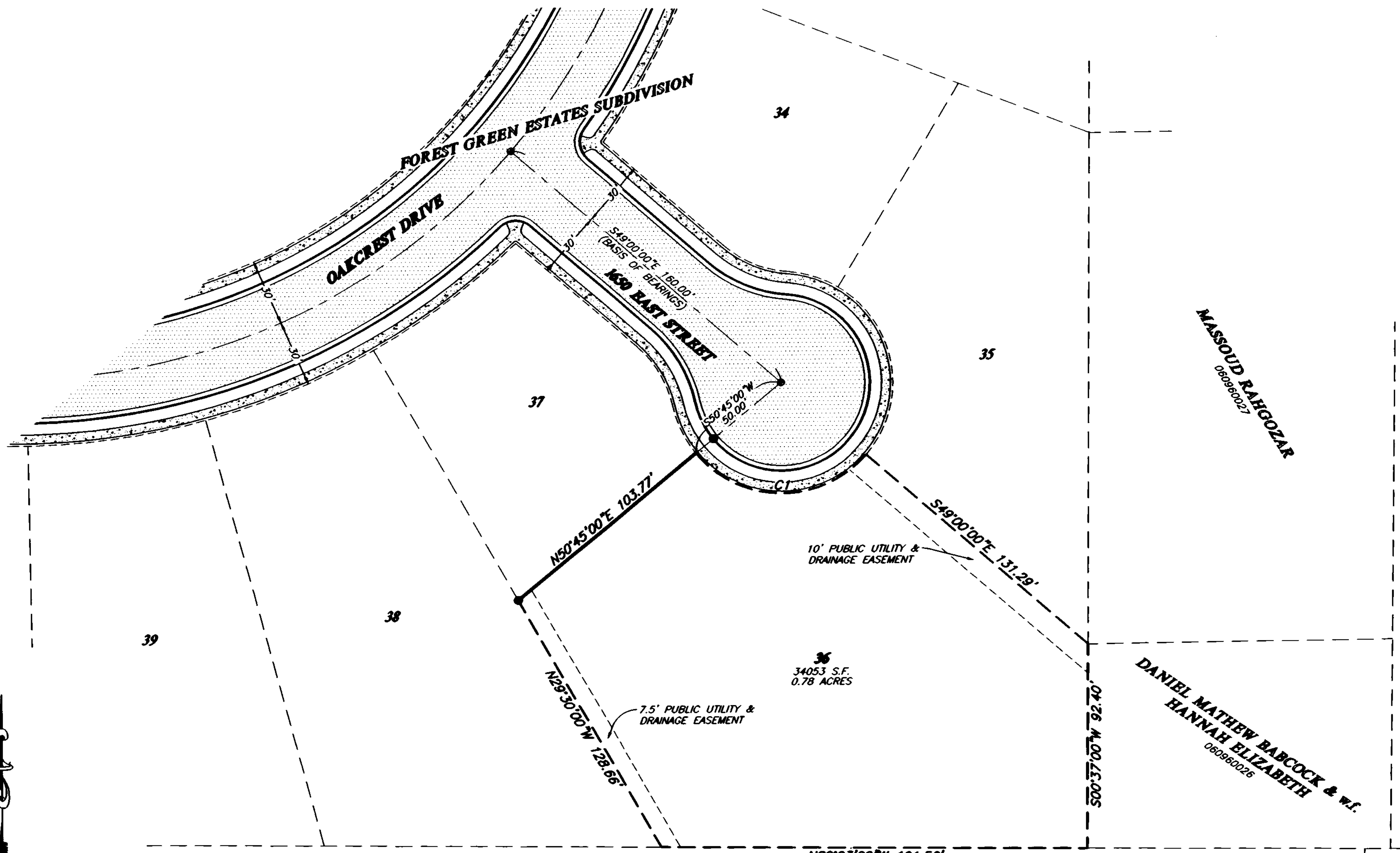
PART OF THE SOUTHEAST QUARTER OF SECTION 10, T.5N., R.1W., S.L.B.&M., U.S. SURVEY, DESCRIBED AS FOLLOWS:

ALL OF LOT 37, FOREST GREEN ESTATES SUBDIVISION, ACCORDING TO THE OFFICIAL PLAT THEREOF ON FILE AND OF RECORD IN THE WEBER COUNTY RECORDER'S OFFICE.

CONTAINS: 34053 S.F. or 0.78 ACRES

**Curve Table**

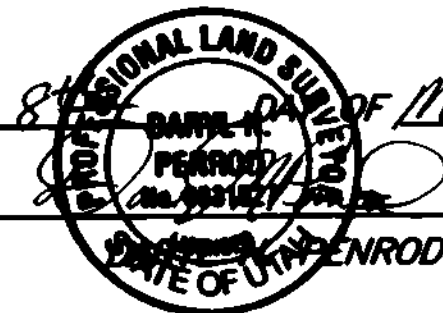
NUMBER	RADIUS	DELTA	LENGTH	TANGENT	CHORD	CH LENGTH
C1	50.00'	99°45'00"	87.05'	59.32'	S89°07'30"E	76.46'



**Surveyor's Certificate**

I, DARYL N. PENROD, REGISTERED PROFESSIONAL LAND SURVEYOR IN THE STATE OF UTAH, LICENSE NO. 533152Z, DO HEREBY CERTIFY THAT THIS PLAT IS A TRUE AND CORRECT REPRESENTATION OF A SURVEY PERFORMED BY ME OR UNDER MY DIRECTION USING DATA COMPILED FROM RECORDS ON FILE IN THE WEBER COUNTY RECORDERS OFFICE, AND FIELD DATA COLLECTED FOR THIS SURVEY.

SIGNED THIS 8th day of March, 2005.



RECEIVED

MAR 08 2005

Weber County Surveyor:

003431

THESE PLANS AND SPECIFICATIONS ARE THE PROPERTY OF REEVE & ASSOC., INC., EXECUTIVE BLDG., 4155 S. HARRISON BLVD., #310 OGDEN UTAH, 84403 AND SHALL NOT BE COPIED OR REDUCED OR REPRODUCED WITHOUT THEIR WRITTEN PERMISSION.

**REVISIONS**

1. 02-07-2005 NSJ/OM/AD 4.
2. \_\_\_\_\_ 5.
3. \_\_\_\_\_ 6.

PROJECT NO.: 0001-01 SURVEYOR: D. PENROD  
 DATE: 10-26-2004 DRAWN: N. JOHNSON  
 SCALE: 1"=30' CHECKED: \_\_\_\_\_

**REEVE & ASSOCIATES, INC.**  
 Civil Engineering \* Structural Engineering  
 Surveying \* Land Planning \* Landscape Architecture  
 EXECUTIVE BLDG., 4155 S. HARRISON BLVD., #310  
 OGDEN, UTAH 84403  
 (801) 621-3100 FAX (801) 621-2666

**RECORD OF SURVEY**

**JON JENSEN PROPERTY**  
 PART OF THE SOUTHEAST QUARTER OF SECTION 10, T.5N., R.1W., S.L.B.&M., U.S. SURVEY  
 OGDEN CITY, WEBER COUNTY, UTAH  
 MARCH, 2005

SHEET  
**1**  
 SHEETS