

DRAWING NUMBER

000346

PLAN HOLD CORPORATION • IRVINE, CALIFORNIA

REORDER BY NUMBER 075AR

POSITION EDGE OF PRINT ON THIS LINE

DRAWING NUMBER

000346

PLAN HOLD CORPORATION • IRVINE, CALIFORNIA

REORDER BY NUMBER 075AR

POSITION EDGE OF PRINT ON THIS LINE

DRAWING NUMBER

000346

PLAN HOLD CORPORATION • IRVINE, CALIFORNIA

REORDER BY NUMBER 075AR

POSITION EDGE OF PRINT ON THIS LINE

DRAWING NUMBER

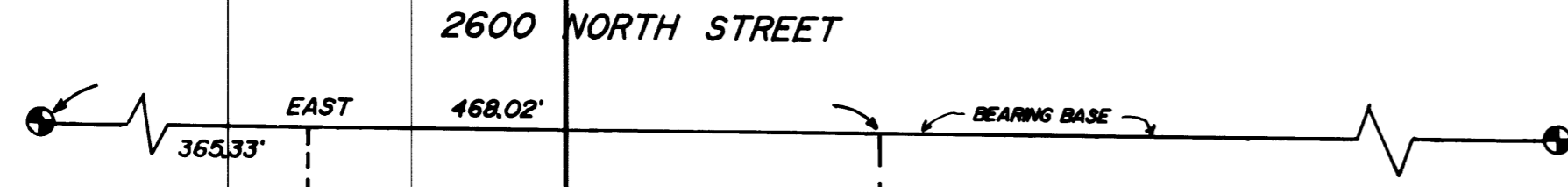
000346

PLAN HOLD CORPORATION • IRVINE, CALIFORNIA

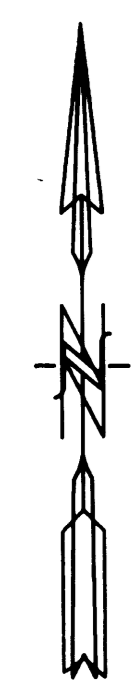
REORDER BY NUMBER 075AR

POSITION EDGE OF PRINT ON THIS LINE

3" DIA. BRASS CAP
INTERSECTION OF
2600 N. & 700 E.

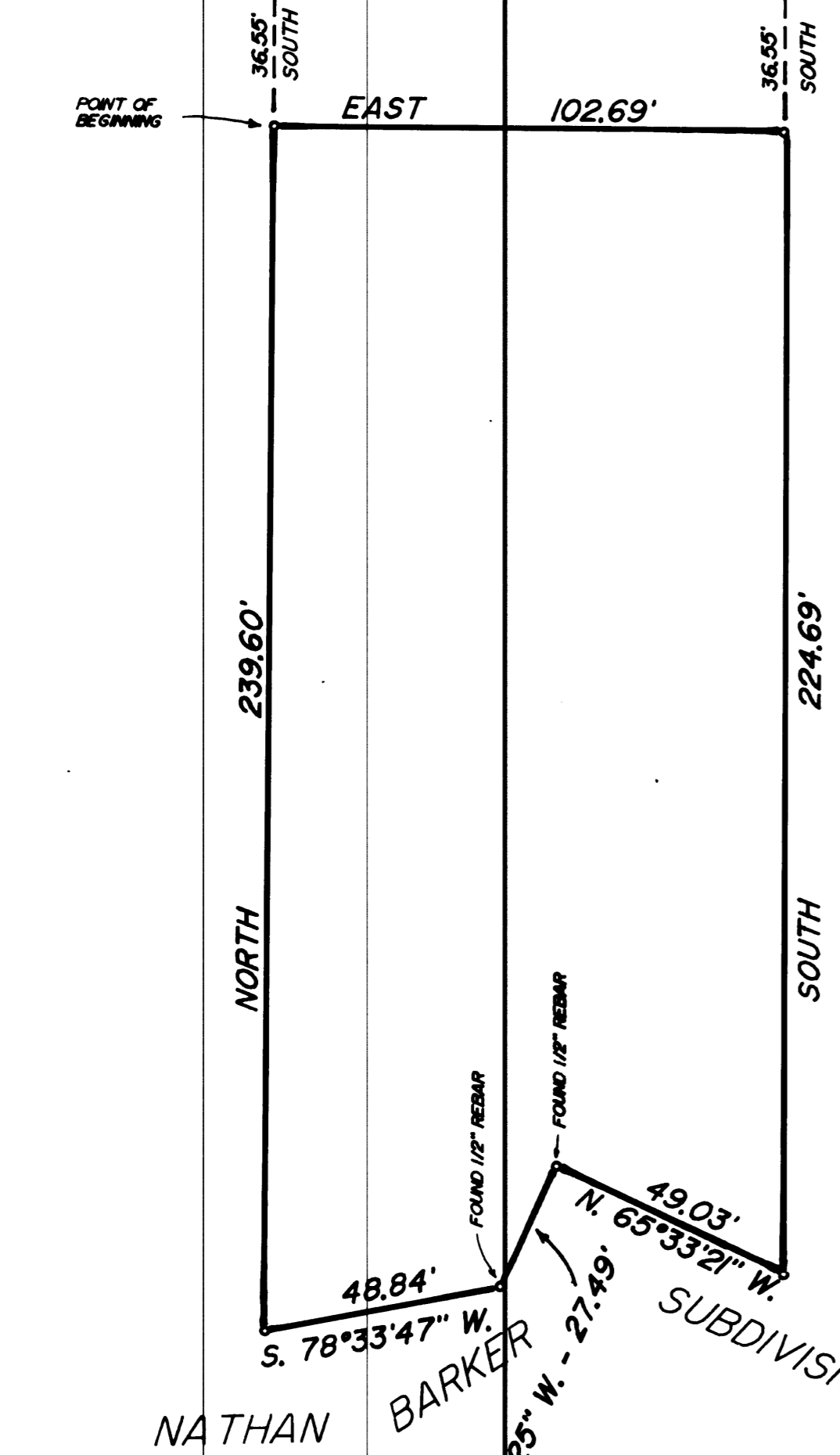


3" DIA. BRASS CAP
INTERSECTION OF
2600 N. & FRUITLAND DR.



SCALE: 1" = 30'

LEGEND:
UNLESS OTHERWISE NOTED
Ø IS A SET #5 CAPPED REBAR
24" LONG.



PROPERTY DESCRIPTION
BEING A PART OF THE NE 1/4 OF SECTION 33, T7N, R1W, S.L.B.&M., AND DESCRIBED AS FOLLOWS:

BEGINNING AT A POINT WHICH IS EAST, ALONG THE MONUMENT LINE OF 2600 NORTH STREET, 365.33 FEET, AND SOUTH 36.55 FEET FROM THE MONUMENT AT THE INTERSECTION OF 2600 NORTH STREET, AND 700 EAST STREET AND RUNNING:

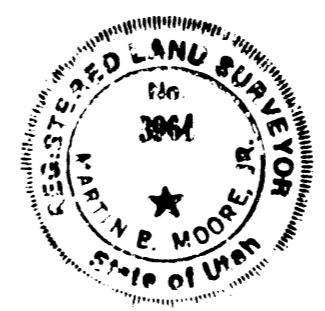
THENCE EAST, ALONG THE SOUTH LINE OF 2600 NORTH STREET, 102.69 FEET;
THENCE SOUTH, 224.69 FEET TO THE NORTH LINE OF THE NATHAN BARKER SUBDIVISION;

THENCE ALONG SAID LINE, THE FOLLOWING THREE COURSES;
1. N. 65°33'21" W., 49.03 FEET;
2. ALONG THE ARC OF A CURVE TO THE RIGHT, HAVING A RADIUS OF 415 FEET, A DISTANCE OF 27.50 FEET; (LONG CHORD BEARS S. 21°44'25" W., 27.49 FEET)
3. S. 78°33'47" W., 48.84 FEET, TO A POINT 21.0 FEET EAST OF THE EAST LINE OF LOT 1, BLOCK 1, NORTH OGDEN CITY PLAT "A".

THENCE NORTH, 21 FEET EAST OF AND PARALLEL WITH THE SAID EAST LINE OF LOT 1, 239.60 FEET TO THE POINT OF BEGINNING, AND CONTAINING 0.69 ACRES.

I, MARTIN B. MOORE JR., UTAH REGISTERED LAND SURVEYOR NO. 3964, DO HEREBY CERTIFY THAT THIS PLAT WAS PREPARED FROM A SURVEY MADE ON THE GROUND BY ME, OR UNDER MY SUPERVISION, AT THE REQUEST OF NORTH OGDEN CITY, AND ON BEHALF OF MOUNTAIN WEST PROFESSIONAL LAND SURVEYORS P.C., AND IS TRUE AND CORRECT TO THE BEST OF MY KNOWLEDGE AND BELIEF.

Martin B. Moore Jr.
MARTIN B. MOORE JR.



NARRATIVE OF SURVEY
THE PURPOSE OF THIS SURVEY WAS TO ESTABLISH THE LINES OF THE PARCEL ON THE GROUND. THIS PARCEL WAS A PART OF THE PARCEL THAT WAS SURVEYED FOR DOUG WARREN IN 1987, AND IS ON FILE WITH THE WEBER COUNTY SURVEYORS OFFICE. NO PROBLEMS WERE ENCOUNTERED.

RECORD OF SURVEY
for
NORTH OGDEN CITY

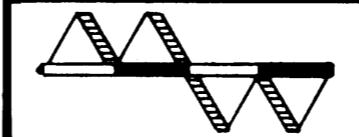
A PART OF THE NE 1/4 OF SECTION 33, T.7N, R.1W, S.L.B. & M.

RECEIVED

JUN 12 1990

Weber County Surveyor

Date 5/07/90 No 90-1002 Drwn RLW Ckd MEM



MOUNTAIN WEST PROFESSIONAL
LAND SURVEYORS, P.C.
Roy, Utah

000346