
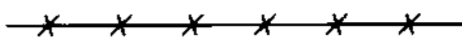
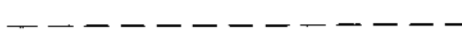
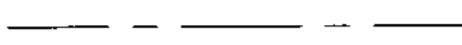
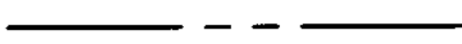




Legend

-  = SECTION CORNER
-  = EXISTING FENCE
-  = RIGHT OF WAY LINE
-  = ROAD CENTERLINE
-  = SECTION TIE LINE
-  SSMHO = SANITARY SEWER MANHOLE
-  = EXISTING PAVEMENT

Surveyor's Certificate

I, CHAD R. MOSER, REGISTERED PROFESSIONAL LAND SURVEYOR IN THE STATE OF UTAH, LICENSE NO. 350503, DO HEREBY CERTIFY THAT THIS PLAT IS A TRUE AND CORRECT REPRESENTATION OF A SURVEY PERFORMED BY ME OR UNDER MY DIRECTION USING DATA COMPILED FROM RECORDS ON FILE IN THE WEBER COUNTY RECORDERS OFFICE, AND FIELD DATA COLLECTED FOR THIS SURVEY.

SIGNED THIS 24th DAY OF May, 2005.

Chad R. Moser
CHAD R. MOSER



Narrative

THE PURPOSE OF THIS SURVEY IS TO DETERMINE THE PHYSICAL LOCATIONS OF THE PROPERTY LINES FOR BRANDON AND ANN PARK. THE NORTH AND SOUTH LINES WERE FIXED BY DEED. THE WEST LINE WAS FIXED BY THE DEED LOCATION OF THE EAST LINE OF 400 WEST STREET. THE EAST LINE WAS FIXED BY THE WEST LINE OF WEBER VIEW SUBDIVISION. DEED BEARINGS WERE ROTATED TO MATCH THE UTAH STATE PLANE COORDINATE SYSTEM (1927) NORTH ZONE, DETERMINED LOCALLY BY THE LINE BETWEEN THE NORTHWEST CORNER AND THE SOUTHWEST CORNER OF SECTION 29, T.7N., R.1W., S.L.B.&M., U.S. SURVEY, SHOWN HEREON AS; 500°58'26"W. ALL BOUNDARY CORNERS WERE SET WITH A 5/8" REBAR AND RED CAP STAMPED "REEVE & ASSOCIATES".

Basis of Bearings

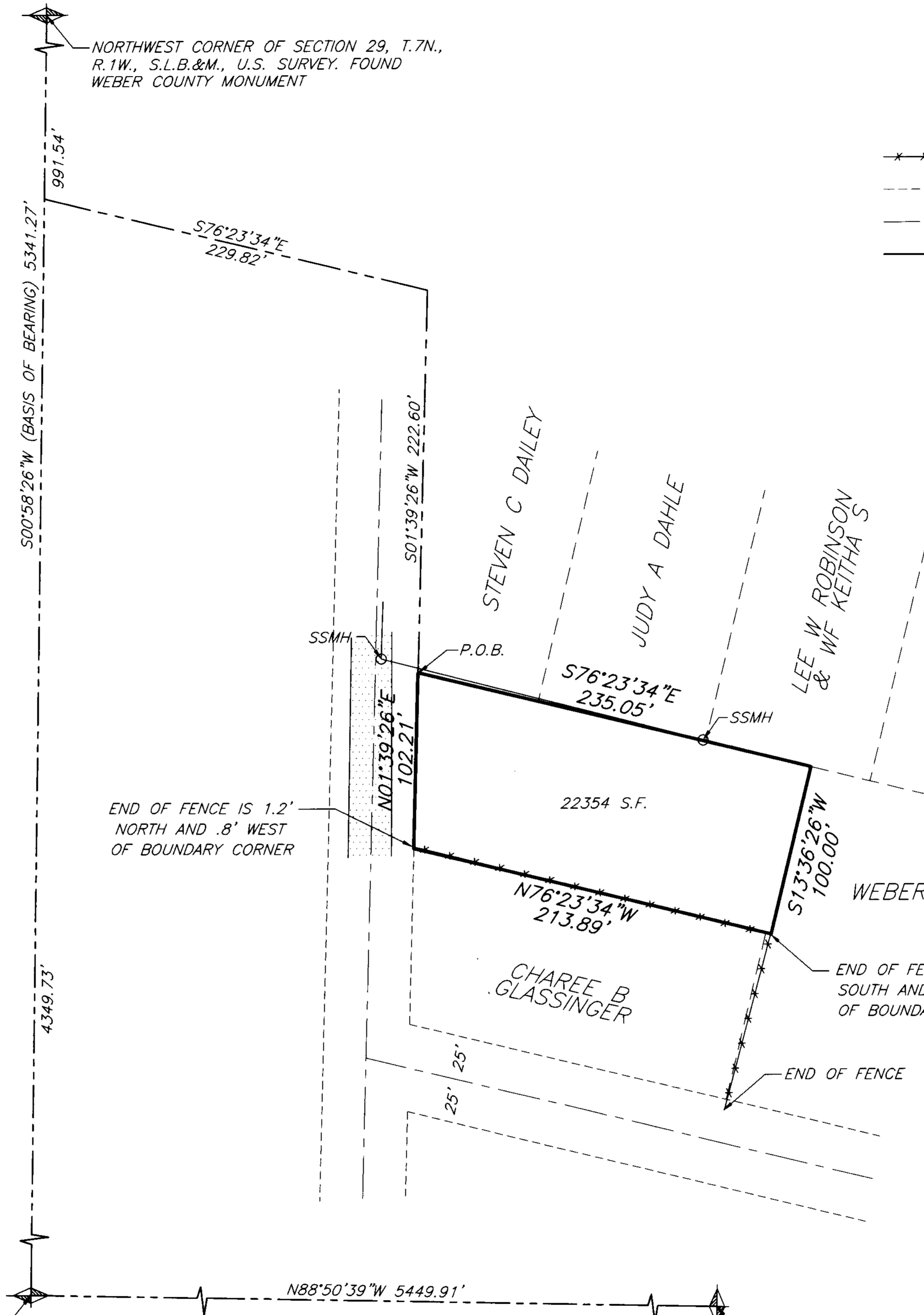
THE BASIS OF BEARINGS FOR THIS PLAT IS THE UTAH STATE COORDINATE SYSTEM (1927) NORTH ZONE, DETERMINED LOCALLY BY THE LINE BETWEEN THE NORTHWEST CORNER AND THE SOUTHWEST CORNER OF SECTION 29, T.7N., R.1W., S.L.B.&M., U.S. SURVEY, SHOWN HEREON AS; 500°58'26"W

Boundary Description

PART OF THE NORTHWEST QUARTER OF SECTION 29, TOWNSHIP 7 NORTH, RANGE 1 WEST, SALT LAKE BASE AND MERIDIAN, U.S. SURVEY, DESCRIBED AS FOLLOWS: BEGINNING ON THE EAST LINE OF 400 WEST STREET, WHICH POINT LIES 500°58'26"W 991.54 FEET ALONG THE SECTION LINE AND S76°23'34"E 229.82 FEET AND S01°39'26"W 222.60 FEET FROM THE NORTHWEST CORNER OF SAID SECTION 29; THENCE S76°23'34"E 235.05 FEET TO THE WEST LINE OF WEBER VIEW SUBDIVISION, THENCE S13°36'26"W 100.00 FEET, THENCE N76°23'34"W 213.89 FEET TO THE EAST LINE OF 400 WEST STREET; THENCE N01°39'26"E 102.21 FEET TO THE POINT OF BEGINNING.

SOUTHWEST CORNER OF SECTION 29, T.7N., R.1W., S.L.B.&M., U.S. SURVEY. FOUND WEBER COUNTY MONUMENT

SOUTHEAST CORNER OF SECTION 29, T.7N., R.1W., S.L.B.&M., U.S. SURVEY. FOUND WEBER COUNTY MONUMENT



RECEIVED
MAY 25 2005
Weber County Surveyor

THESE PLANS AND SPECIFICATIONS ARE THE PROPERTY OF REEVE & ASSOC., INC., EXECUTIVE BLDG., 4155 S. HARRISON BLVD., #310 OGDEN UTAH, 84403 AND SHALL NOT BE COPIED OR REDUCED OR REPRODUCED WITHOUT THEIR WRITTEN PERMISSION.

REVISIONS	
1. 05-18-2005 NSJ (M.L.A.R.)	4.
2.	5.
3.	6.

PROJECT NO.: 2002-01	SURVEYOR: C. MOSER
DATE: 5-18-05	DRAWN: N. ANDERSON
SCALE: 1"=40'	CHECKED:

REEVE & ASSOCIATES, INC.
Civil Engineering • Structural Engineering
Surveying • Land Planning • Landscape Architecture
EXECUTIVE BLDG., 4155 S. HARRISON BLVD., #310
OGDEN, UTAH 84403
(801) 621-3100 FAX (801) 621-2666

RECORD OF SURVEY

PARK PROPERTY
PART OF NW 1/4 SECTION 29, T.7N., R.1W., S.L.B. & M., U.S. SURVEY
OGDEN CITY, WEBER COUNTY, UTAH
MAY, 2005

SHEET	
1	1