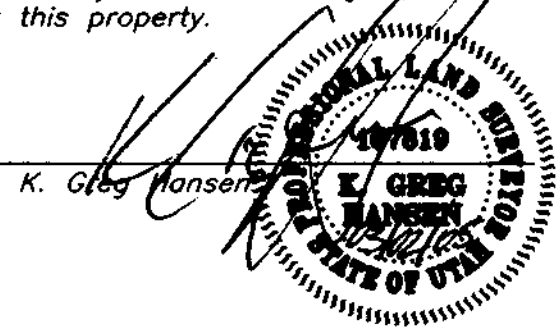


Dave Wadman Subdivision

A PART OF THE SOUTHEAST QUARTER OF SECTION 1,
TOWNSHIP 7 NORTH, RANGE 1 WEST, S.L.B.&M.
WEBER COUNTY, UTAH

SURVEYOR'S CERTIFICATE
I, K. Greg Hansen, a registered land surveyor in the State of Utah, do hereby certify that this plat of DAVE WADMAN SUBDIVISION in Weber County, Utah has been correctly drawn to the designated scale and is a true and correct representation of the following description of lands included in said subdivision, based on data compiled from records in the Weber County Recorder's Office, and of a survey made on the ground and meets the Weber County zoning requirements that affect this property.

Signed this 2ND day of MARCH, 2005
167819
License No.



SUBDIVISION BOUNDARY

A PART OF THE SOUTHEAST QUARTER OF SECTION 1, TOWNSHIP 7 NORTH, RANGE 1 WEST OF THE SALT LAKE BASE AND MERIDIAN. BEGINNING AT A POINT ON THE WEST LINE OF SERENITY HILLS SUBDIVISION LOCATED NORTH 89°58'16" EAST 1121.00 FEET ALONG THE SOUTH LINE OF SAID SOUTHEAST QUARTER AND NORTH 13°28'48" EAST 110.25 FEET AND SOUTH 89°59'00" WEST 186.53 FEET AND NORTH 00°01'00" EAST 235.25 FEET FROM THE SOUTHWEST CORNER OF SAID SOUTHEAST QUARTER BEING A WEBER COUNTY SURVEY BRASS CAP MONUMENT; RUNNING THENCE ALONG THE WEST BOUNDARY LINE OF SAID SUBDIVISION THE FOLLOWING THREE (3) COURSES; (1) NORTH 00°01'00" EAST 278.21 FEET; (2) TO THE RIGHT ALONG THE ARC OF A 502.22 FOOT RADIUS CURVE, A DISTANCE OF 277.09 FEET, CHORD BEARS NORTH 15°47'22" EAST; (3) NORTH 22°45'10" EAST 214.84 FEET TO THE SOUTHWESTERLY RIGHT-OF-WAY LINE OF 2250 EAST STREET; THENCE NORTH 45°04'00" WEST 150.00 FEET ALONG SAID RIGHT-OF-WAY LINE; THENCE SOUTH 30°42'33" WEST 408.04 FEET; THENCE SOUTH 09°58'35" EAST 218.15 FEET; THENCE SOUTH 88°30'09" WEST 30.56 FEET; THENCE SOUTH 00°01'00" WEST 278.20 FEET; THENCE SOUTH 88°59'00" EAST 150.01 FEET TO THE POINT OF BEGINNING. CONTAINING 3.00 ACRES AND ONE LOT.

OWNER'S DEDICATION

We, the undersigned owners of the hereon described tract of land, hereby set apart and subdivide the same into a lot as shown on this plat and name said tract DAVE WADMAN SUBDIVISION and do hereby dedicate, grant and convey to Weber County, Utah, all those parts or portions of said tract of land designated as Public Utility Easements as a perpetual right and easement over, upon and under the lands designated on the plat as public utility, storm water detention ponds and drainage easements, the same to be used for the installation, maintenance and operation of public utility service lines, storm drainage facilities or for the perpetual preservation of water drainage channels in their natural state whichever is applicable as may be authorized by Weber County, Utah, with no buildings or structures being erected within such easements.

Signed this day of , 2005.

by: _____
Name

ACKNOWLEDGMENT

State of Utah } SS
County of }
On the day of , 2005, personally appeared before me, the undersigned Notary Public, the signers of the above Owners Dedication, in number, who duly acknowledged to me they signed it freely and voluntarily and for the purposes therein mentioned.

Commission Expires _____ Notary Public

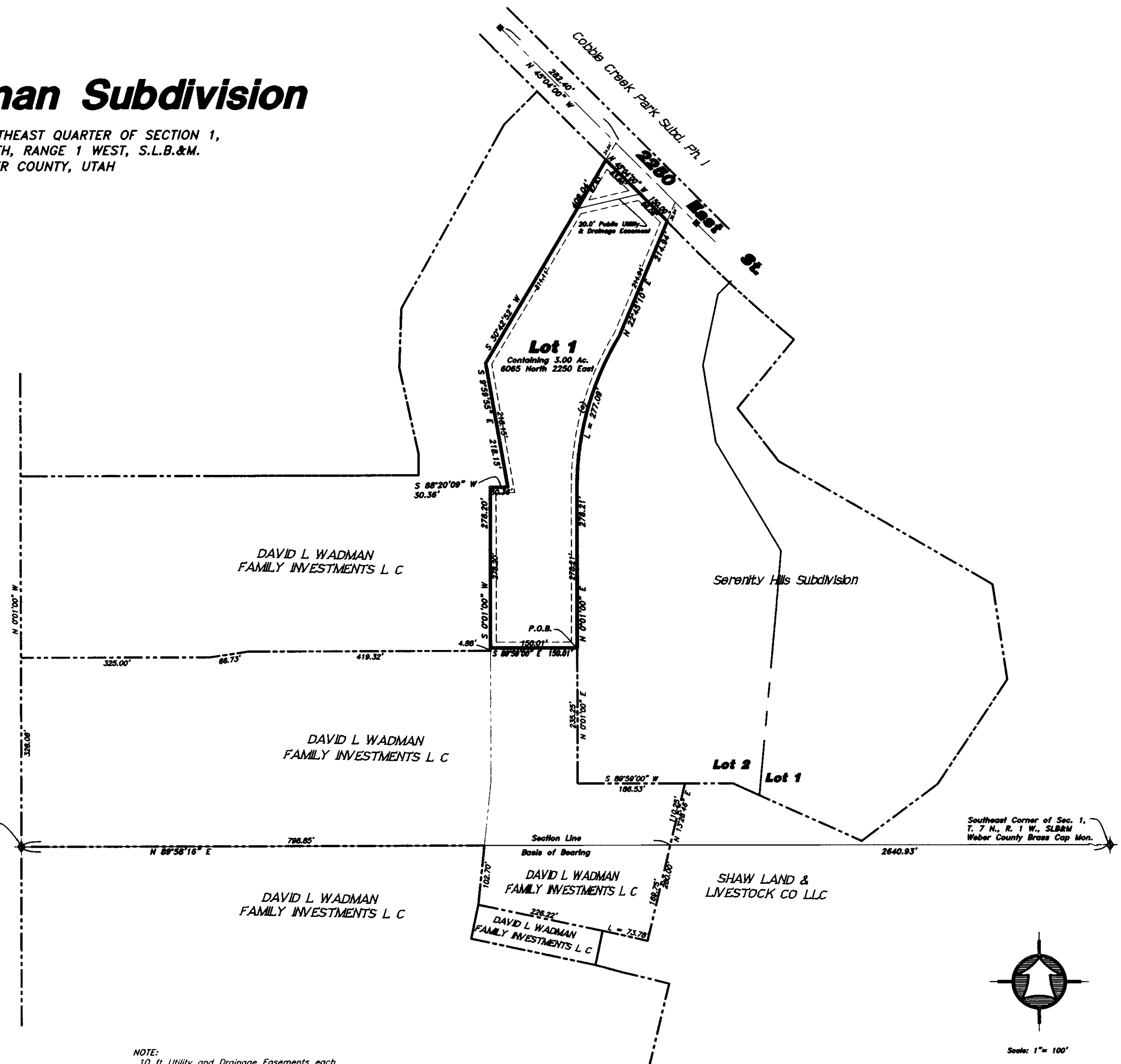
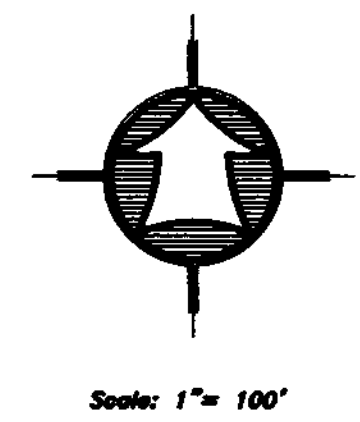
State of Utah } SS
County of }
On the day of , 2005, personally appeared before me, who being by me duly sworn did say that they are of and that said instrument was signed in behalf of said Corporation by a resolution of its Board of Directors, and acknowledged to me that said Corporation executed the same.

Commission Expires _____ Notary Public

NARRATIVE

THE PURPOSE OF THIS SURVEY WAS TO ESTABLISH AND SET THE SOUTH PROPERTY CORNERS OF THIS 3.0 ACRE SUBDIVISION. THIS IS A RESUBDIVISION OF THE WADMAN SUBDIVISION WHICH WAS ORIGINALLY A 5.0 ACRE SUBD. THAT SUBDIVISION WAS VACATED AND REPLACED WITH THIS PLAT. THE SURVEY WAS ORDERED BY DAVE WADMAN. THE CONTROL USED WAS THE EXISTING WEBER COUNTY SURVEYOR MONUMENTATION SURROUNDING SECTION 1, TOWNSHIP 7 NORTH, RANGE 1 WEST S.L.B.&M. THE BASIS OF BEARING IS THE SOUTH LINE OF THE SOUTHEAST QUARTER OF SECTION 1 ASSUMED TO BEAR NORTH 89°58'16" EAST. THE REMAINDER PARCEL OF THE ORIGINAL SUBDIVISION WAS COMBINED WITH PARCEL 18-003-0033.

RECEIVED
MAY 31 2005
Weber County Survey



(a)
Δ = 31°36'41"
R = 502.22'
L = 277.09'
LC = 273.59'
N 15°47'22" E

WEBER COUNTY SURVEYOR
I hereby certify that the Weber County Surveyor's office has reviewed this plat for mathematical correctness, section corner data, and for harmony with lines and monuments on record in county offices. The approval of this plat by the Weber County Surveyor does not relieve the Licensed Land Surveyor who executed this plat from the responsibilities and/or liabilities associated therewith.
Signed this day of , 2005.

NOTE:
10 ft Utility and Drainage Easements each side of Property Lines as indicated by dashed lines, unless otherwise shown.

HANSEN & ASSOCIATES, INC.
Consulting Engineers and Land Surveyors
538 North Main Brigham City, Utah 84302
Brigham City Ogden Logan
723-3491 399-4905 752-8272

WEBER COUNTY PLANNING COMMISSION
This is to certify that this subdivision plat was duly approved by the Weber County Planning Commission on the day of , 2005.
Chairman, Weber County Planning Commission

WEBER COUNTY ENGINEER
I hereby certify that the required public improvement standards and drawings for this subdivision conform with the county standards and the amount of the financial guarantee is sufficient for the installation of these improvements.
Signed this day of , 2005.
Signature

WEBER COUNTY COMMISSION ACCEPTANCE
This is to certify that this subdivision plat, the dedication of streets and other public ways and the financial guarantee of public improvements associated with this subdivision, thereon are hereby accepted by the Commissioners of Weber County, Utah this day of , 2005.
Chairman, Weber County Commission

WEBER COUNTY ATTORNEY
I have examined the financial guarantee and other documents associated with this subdivision plat and in my opinion they conform with the county ordinance applicable thereto and now in force and effect.
Signed this day of , 2005.
Signature

05-3-40 05-3-40.DWG 03-01-05
WEBER COUNTY RECORDER
ENTRY NO. _____ FEE PAID _____
FILED FOR RECORD AND
RECORDED _____ AT _____
IN BOOK _____ OF OFFICIAL
RECORDS, PAGE _____ RECORDED
FOR _____
COUNTY RECORDER
BY: _____
DEPUTY