

NARRATIVE

This Condominium plat was requested by Mr. Brent McQuarrie in order to build a Condominium Project.

A line bearing South 89°36'57" East between the Brass Cap Monuments found at the Southwest corner and the South Quarter corner of Section 13, T6N, R1E, was used as the basis of bearings.

Lot corners were monumented as depicted on this drawing.

NOTE:

1. Construction of this project was not complete at the time this Record of Survey Map was prepared. Upon completion of construction, the Map may require amendment in the event of any material change in the final location of improvements.

2. Each condominium unit contained within the project is as shown and is designated by a number.

Common areas & facilities -

Private ownership - 2

Limited common area & facilities -

3. All driveways, patios, decks, balconies, on each unit contained within the project are considered Limited Common Areas. They are set aside and reserved for the use of the respective condominium unit to which they are attached and/or appurtenant.

4. All other areas contained within the project, but not shown with diagonal stripe or cross hatched lines are considered Common Area, including covered and uncovered parking, private streets, storm water detention and drainage easement area.

5. Dimensions on this sheet are to exterior foundation only.

6. All Common Area is considered to be an easement for public utility and drainage purposes, including the private streets.

7. 8" culinary waterline and the Sanitary Sewer Main to be privately owned and maintained by the Home Owner's Association.

Lakeside Village Phase 8

A Condominium Plat

A part of the Southwest 1/4 of Section 13, T6N, R1E, SLB&M, U.S. Survey

Weber County, Utah

Sheet 1 of 3

February 2005



Scale 1" = 20'



Graphic Scale

Section Corner

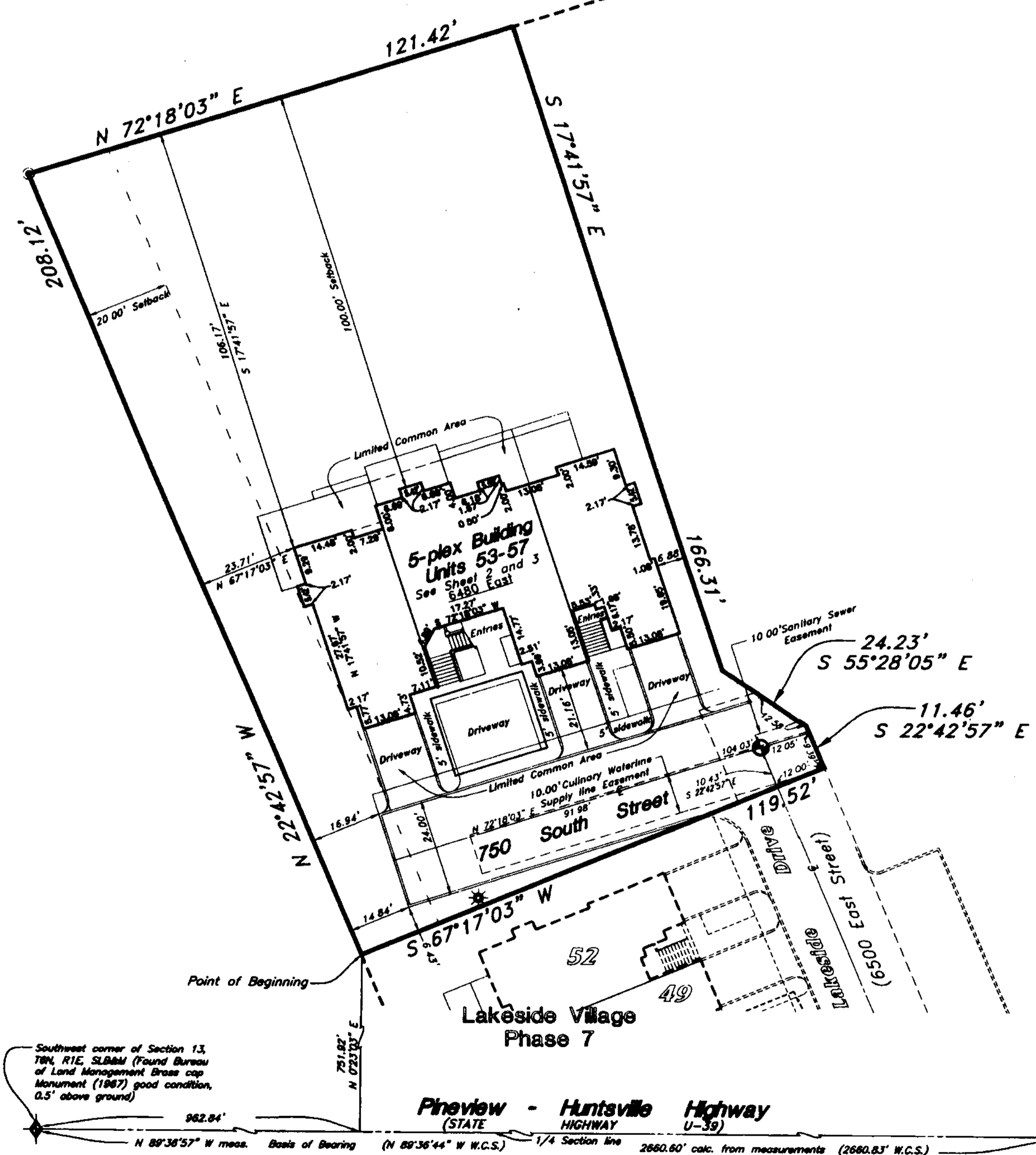
W.C.S. Weber County Survey

(Rad.) Radial line

(N/R) Non-Radial line

Location of Centerline Monument to be set upon completion of road improvements

Set 5/8" # Rebar (24" long) & cap with fencepost



WEBER COUNTY ATTORNEY
I have examined the financial guarantee and other documents associated with this subdivision plat and in my opinion they conform with the County Ordinance applicable thereto and now in force and effect.
Signed this 2nd day of March, 2005.

U. Hulgado
Signature

WEBER COUNTY SURVEYOR
I hereby certify that the Weber County Surveyor's office has reviewed this plat for mathematical correctness, section corner data, and for harmony with lines and monuments on record in county offices. The approval of this plat by the Weber County Surveyor does not relieve the Licensed Land Surveyor who executed this plat from the responsibilities and/or liabilities associated therewith.
Signed this 2nd day of March, 2005.

[Signature]
Signature

TOWNSHIP PLANNING COMMISSION
This is to certify that this subdivision plat was duly approved by the Ogden Valley Township Planning Commission on the 16 day of March, 2005.

[Signature]
Chair, Ogden Valley Township Planning Commission

WEBER COUNTY ENGINEER
I hereby certify that the required public improvement standards and drawings for this subdivision conform with County standards and the amount of the financial guarantee is sufficient for the installation of these improvements.
Signed this 15th day of March, 2005.

[Signature]
Signature

WEBER COUNTY COMMISSION ACCEPTANCE
This is to certify that this subdivision plat, the dedication of streets and other public ways and financial guarantee of public improvements associated with this subdivision, thereon are hereby approved and accepted by the Commissioners of Weber County, Utah this 15 day of March, 2005.

Title *[Signature]*
Attest *[Signature]* Chair, Weber County Commission

OWNERS CERTIFICATE OF CONSENT TO RECORD 00355
Know all men by these presents: Brent McQuarrie, President of Legacy Properties L.L.C. a Limited Liability Company, which is the owner of the tract of land described hereon and Lakeside Village Phase 8, a condominium project located on said tract of land do hereby make this certificate for and on behalf of said corporation has caused a survey to be made, and this record of survey map, consisting of three (3) sheets to be prepared; that said Corporation has consented to and does hereby consent to the recordation of this Record of Survey Map in accordance with the Utah Condominium Ownership Act.
In Witness whereof I have set my hand and affixed the Corporate seal this 2nd day of March, 2005

Legacy Properties L.L.C.

[Signature]
Brent McQuarrie - President

OWNER'S DEDICATION

I, the undersigned owner of the herein described tract of land, do hereby set apart and subdivide the same into units and private street as shown on this plat, and name said tract Lakeside Village Phase 8, a Condominium Plat and do hereby dedicate and reserve unto themselves, their heirs, their grantees and assigns, a right of way to be used in common with all others within said condominium (and those adjoining condominiums that may be prepared by the undersigned owners, their successors, or assigns) on, over and across all those portions or parts of said tract of land designated on said plat as Private Street (Private Right of Way) as access to the individual units, be maintained by Lakeside Village Home Owners Association whose membership consists of said owners, their grantees, successors or assigns; and grant and convey to said Owners Association, all those parts or portions of said tract of land designated as Common Areas to be used for recreational and open space purposes for the benefit of each Owners Association member in common with all others in the condominium and grant and dedicate to Weber County a perpetual Open Space Right and Easement on and over the Common Area to guarantee to Weber County that the Common Areas remain open and undeveloped except for approved recreational, parking and open space purposes. Also grant and dedicate a perpetual right and easement over, upon and under the lands designated on the plat as public utility, storm water detention ponds and drainage easements, the same to be used for the installation, maintenance and operation of public utility service lines, storm drainage facilities or for the perpetual preservation of water drainage channels in their natural state whichever is applicable as may be authorized by governing authority with no buildings or structures being erected within such easements.
Signed this 2nd day of March, 2005.

Legacy Properties L.L.C.

[Signature]
Brent McQuarrie - President

ACKNOWLEDGMENTS

State of Utah } ss
County of Weber }

On the 8th day of March, 2005, personally appeared before me, the undersigned Notary Public, the signer of the above Owner's Dedication, one in number, who duly acknowledged to me he signed it freely and voluntarily and for the purposes therein mentioned.

Residing at: Roy, Utah *[Signature]*
Commission Expires: 11-26-2007 *[Signature]*
A Notary Public commissioned in Utah

State of Utah } ss
County of Weber }

On the 8th day of March, 2005, personally appeared before me, Brent McQuarrie who being by me duly sworn did say that he is President of Legacy Properties L.L.C. a Limited Liability Company and that said instrument was signed in behalf of said Corporation by a resolution of its Board of Directors and acknowledged to me that said Corporation executed the same.

Residing at: Roy, Utah *[Signature]*
Commission Expires: 11-26-2007 *[Signature]*
A Notary Public commissioned in Utah

SURVEYOR'S CERTIFICATE

I, Mark E. Babbitt, a duly Registered Professional Utah Land Surveyor as required by the laws of the State of Utah, holding License No. 166484, do hereby certify that I have surveyed the following described tract of land at the instance of Legacy Properties L.L.C. a Limited Liability Company and is based on information on record at the Weber County Recorder's Office:

A part of the Southwest quarter of Section 13, Township 6 North, Range 1 East, Salt Lake Base and Meridian, U.S. Survey:
Beginning at the Northwest corner of Lakeside Village Phase 7, a Condominium project in Weber County, Utah which is 962.84 feet South 89°36'57" East along the quarter section line and 751.92 feet North 0°23'03" East from the Southwest corner of said Section 13; running thence North 22°42'57" West 202.12 feet; thence North 72°18'03" East 121.42 feet; thence South 17°41'57" East 166.31 feet; thence South 55°28'05" East 24.23 feet; thence South 22°42'57" East 11.46 feet to the Northeast corner of said Lakeside Village Phase 7; thence South 67°17'03" West 119.52 feet along the Northerly line of said Lakeside Village Phase 7 to the point of beginning.
Contains 23,147 sq. ft.
Or 0.531 acre

I further certify that the above description correctly describes the perimeter of the surface of the land on which has been or will be constructed "Lakeside Village Phase 8", that the property corners have been accurately set on the ground and are sufficient to readily retrace or reestablish this survey, and that all current lot widths and areas meet the requirements of the Weber County Zoning Ordinance; that this Record of Survey Map consisting of three (3) sheets was prepared in accordance with the "Utah Condominium Ownership Act" and represents a true and accurate map of the land and building thereon to the best of my knowledge and belief.
Signed this 23rd day of February, 2005.

166484
License No. *[Signature]*
Mark E. Babbitt



RECEIVED
JAN 26 2006
WEBER CO SURVEYOR

003556

WEBER COUNTY RECORDER
ENTRY NO. 2093905 FEE PAID
RECORDED 30-MAR-2005 AT 2:18 PM IN BOOK 16 OF OFFICIAL RECORDS, PAGE 33. RECORDED FOR LAND AND TITLE
[Signature]
DEPUTY

GREAT BASIN ENGINEERING NORTH
CONSULTING ENGINEERS AND SURVEYORS
5746 South 1475 East - Suite 200
Ogden, Utah 84403
P.O. Box 152048, Ogden, Utah 84415
Phone (801)226-0818 Fax (801)226-0822