

# LEAVITT FIELD SUBDIVISION

PART OF THE N.E. 1/4 OF SECTION 17, T.6N., R.1W., S.L.B. AND M.  
OGDEN CITY, WEBER COUNTY, UTAH  
RECORD OF SURVEY

N 0°58' E 2710.38 MEAS. (2709.27 REC.)  
BASIS OF BEARINGS  
FOUND OGDEN CITY MONUMENT @ INT. WALL AVE. & 2ND STREET  
FOUND OGDEN CITY MONUMENT @ INT. WALL AVE. & NORTH STREET

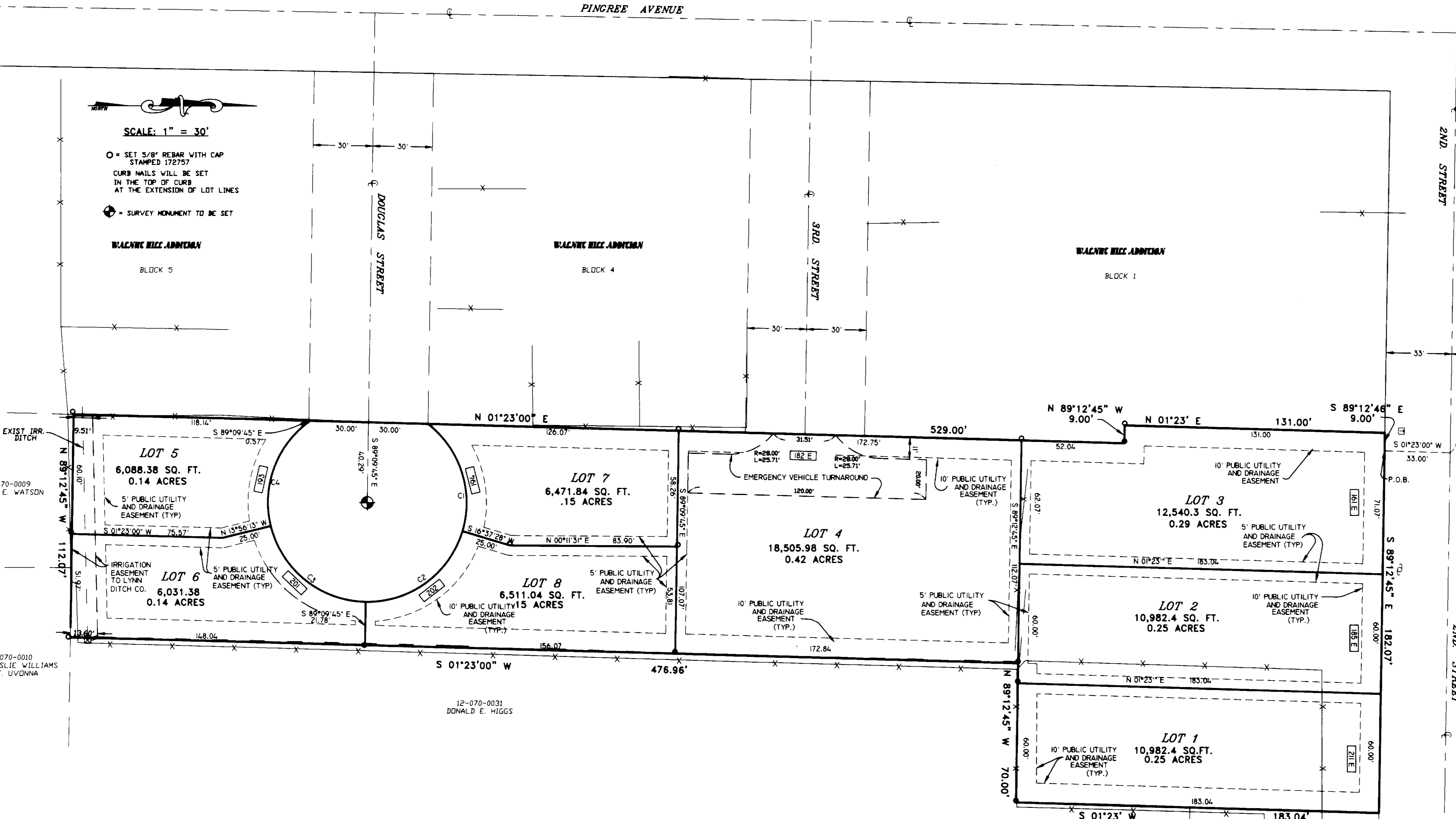
**SURVEYOR'S CERTIFICATE**  
I, DOUG L. GRAMM, A REGISTERED LAND SURVEYOR IN THE STATE OF UTAH DO HEREBY CERTIFY THAT THIS PLAN OF LEAVITT FIELD SUBDIVISION IN WEBER COUNTY, UTAH, HAS BEEN CORRECTLY DRAWN TO SCALE AND IS A TRUE AND CORRECT REPRESENTATION OF THE FOLLOWING DESCRIPTION OF LANDS INCLUDED IN SAID SUBDIVISION, BASED ON DATA COMPILED FROM RECORDS IN THE WEBER COUNTY RECORDERS OFFICE, OGDEN CITY ENGINEERS OFFICE AND OF A SURVEY MADE ON THE GROUND.  
SIGNED THIS 6<sup>TH</sup> DAY OF DECEMBER 2005  
RL# 172757



**OWNER'S DECLARATION**  
WE, THE UNDERSIGNED OWNERS OF THE HEREIN DESCRIBED TRACT OF LAND, DO HEREBY SEPARATE AND SUBDIVIDE THE SAME INTO LOTS AND STREETS AS SHOWN ON THE PLAN AND MAKE SAID TRACT LEAVITT FIELD SUBDIVISION AND DO HEREBY DEDICATE, GRANT AND CONVEY TO OGDEN CITY, UTAH, ALL THOSE PARTS OR PORTIONS OF SAID TRACT OF LAND DESIGNATED AS STREETS, THE SAME TO BE USED AS PUBLIC THOROUGHFARES FOREVER, AND ALSO GRANT, DEDICATE AND CONVEY TO OGDEN CITY A PERPETUAL RIGHT AND EASEMENT OVER THOSE LANDS DESIGNATED ON THE PLAN AS PUBLIC UTILITY AND DRAINAGE EASEMENTS, THE SAME TO BE USED FOR DRAINAGE AND THE INSTALLATION, MAINTENANCE AND OPERATION OF PUBLIC UTILITY SERVICES LINES, AS MAY BE AUTHORIZED BY OGDEN CITY, UTAH, AND ALSO GRANT AND DEDICATE TO LYNN IRRIGATION A PERPETUAL EASEMENT FOR IRRIGATION OVER AND ACROSS THESE AREAS DESIGNATED AS IRRIGATION EASEMENTS, WITH NO BUILDINGS OR STRUCTURES BEING ERECTED WITHIN SUCH EASEMENTS. THE OWNERS FURTHER DEDICATE AND CONVEY TO OGDEN CITY ALL THESE PORTIONS OF SAID TRACT DESIGNATED HEREON AS AN EMERGENCY VEHICLE TURNAROUND TO BE USED FOR ACCESS AND MANEUVERING BY EMERGENCY VEHICLES AND NOT AS A PUBLIC THOROUGHFARE WITH NO ABOVE-GROUND STRUCTURES PLACED WITHIN SUCH EASEMENTS.  
SIGNED THIS \_\_\_\_\_ DAY OF \_\_\_\_\_ 20\_\_

**COMMISSION EXPIRES**  
STATE OF UTAH  
COUNTY OF DAVIS  
ON THIS \_\_\_\_\_ DAY OF \_\_\_\_\_ 20\_\_, PERSONALLY APPEARED BEFORE ME \_\_\_\_\_ WHOSE IDENTITY IS PERSONALLY KNOWN TO ME OR PROVED TO ME ON THE BASIS OF SATISFACTORY EVIDENCE AND WHO BY ME DULY SWORN OR AFFIRMED, DID SAY THAT HE (SHE) IS THE TITLE OR OFFICE OF \_\_\_\_\_ AND THAT SAID DOCUMENT WAS SIGNED BY HIM (HER) IN BEHALF OF SAID CORPORATION BY AUTHORITY OF ITS BYLAWS, OR RESOLUTION OF ITS BOARD OF DIRECTORS, AND SAID \_\_\_\_\_ ACKNOWLEDGED TO ME THAT SAID CORPORATION EXECUTED THE SAME.  
COMMISSION EXPIRES \_\_\_\_\_ NOTARY PUBLIC

**BOUNDARY DESCRIPTION**  
A PART OF THE NORTHEAST QUARTER OF SECTION 17, TOWNSHIP 6 NORTH, RANGE 1 WEST, SALT LAKE BASE AND MERIDIAN, U.S. SURVEY, DESCRIBED AS FOLLOWS:  
BEGINNING AT A POINT ON THE SOUTH LINE OF 2ND STREET, SAID POINT BEING SOUTH 89°12'45" EAST 658.73 FEET ALONG THE CENTERLINE OF SAID 2ND STREET AND SOUTH 01°23'00" WEST 33.00 FEET FROM THE OGDEN CITY MONUMENT AT THE INTERSECTION OF WALL AVENUE AND 2ND STREET, AND RUNNING THENCE SOUTH 89°12'45" EAST 182.07 FEET ALONG THE SOUTH LINE OF SAID 2ND STREET; THENCE SOUTH 01°23'00" WEST 183.04 FEET; THENCE NORTH 89°12'45" WEST 70.00 FEET; THENCE SOUTH 01°23'00" WEST 476.96 FEET; THENCE NORTH 89°12'45" WEST 112.07 FEET TO THE EAST LINE OF WALNUT HILL ADDITION, BLOCK 5; THENCE ALONG SAID EAST LINE, NORTH 01°23'00" EAST 529.00 FEET; THENCE NORTH 89°12'45" WEST 9.00 FEET; THENCE NORTH 01°23' EAST 131.00 FEET TO THE SOUTH LINE OF 2ND STREET; THENCE ALONG SAID SOUTH LINE, SOUTH 89°12'45" EAST 9.00 FEET TO THE POINT OF BEGINNING.



SCALE: 1" = 30'  
O = SET 5/8" REBAR WITH CAP STAMPED 172757  
CURB NAILS WILL BE SET IN THE TOP OF CURB AT THE EXTENSION OF LOT LINES  
+ = SURVEY MONUMENT TO BE SET

12-070-0009  
CALLIE E. WATSON

12-070-0010  
LESLIE WILLIAMS & W. UVONNA

12-070-0031  
DONALD E. HIGGS

12-070-0004  
DONALD E. HIGGS

12-070-0009  
LEONA M. SULLY

**ABSTRACT**  
THE PURPOSE OF THIS SURVEY WAS TO CREATE A SUBDIVISION AS SHOWN. THE BASIS OF BEARING IS OGDEN CITY MONUMENTATION.

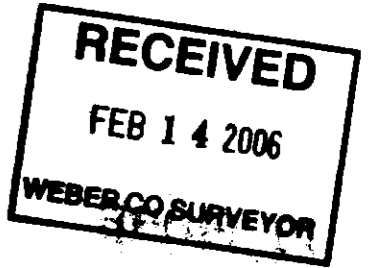
CURVE DATA						
CURVE	RADIUS	LENGTH	TANGENT	CHORD	BEARING	DELTA
C1	50.00'	60.14'	34.31'	56.58'	S 72°09'57" W	68°55'01"
C2	50.00'	64.76'	37.82'	60.33'	N 36°16'09" W	74°12'47"
C3	50.00'	65.65'	38.52'	61.03'	N 38°27'01" E	75°13'32"
C4	50.00'	59.26'	33.66'	55.85'	S 69°59'05" E	67°54'16"

**OGDEN CITY COMMUNITY AND ECONOMIC DEVELOPMENT DEPARTMENT**  
I HEREBY CERTIFY THAT THIS PLAN COMPLIES WITH THE MINIMUM REQUIREMENTS OF THE SUBDIVISION ORDINANCE OF OGDEN CITY, AND CONFORMS WITH THE APPROVED PRELIMINARY PLAN, AS REVIEWED AND APPROVED BY THE OGDEN CITY PLANNING COMMISSION AND THE MAYOR OF OGDEN CITY. PREREQUISITE TO FINAL PLAN APPROVAL BY THE MAYOR OF OGDEN CITY.  
SIGNED THIS \_\_\_\_\_ DAY OF \_\_\_\_\_ 20\_\_

**OGDEN CITY ENGINEER**  
I HEREBY CERTIFY THAT I CAREFULLY INVESTIGATED THE LINES OF SURVEY OF THE FOREGOING PLAN AND LEGAL DESCRIPTION OF THE LANDS ENRAGED THEREIN, AND FIND THEM TO BE CORRECT AND TO AGREE WITH THE TIES AND MONUMENTS ON RECORD IN THIS OFFICE.  
SIGNED THIS \_\_\_\_\_ DAY OF \_\_\_\_\_ 20\_\_

**CITY ATTORNEY'S OFFICE**  
APPROVED BY THE CITY ATTORNEY'S OFFICE THIS \_\_\_\_\_ DAY OF \_\_\_\_\_ 20\_\_

**OGDEN CITY APPROVAL**  
THIS PLAN AND THE DEDICATIONS OFFERED HEREIN, ARE APPROVED AND ACCEPTED BY THE MAYOR OF OGDEN CITY THIS \_\_\_\_\_ DAY OF \_\_\_\_\_ 20\_\_



LANDMARK SURVEYING AND ENGINEERING, INC.  
A COMPLETE LAND DEVELOPMENT SERVICE  
4646 S. 3500 W. #A-3, WEST HAVEN, UTAH 84401  
PHONE 801-731-4075

CLIENT: LARRY BUTTARS  
LOCATION: PART OF THE N.E. 1/4 OF SEC. 17, T.6N., R.1W., S.L.B.&M.  
SURVEYED: DEC 2002

REVISIONS:	DRAWN BY: D.L.G.
05-25-04 D.L.G.	CHECKED BY: D.G.
07-28-05 R.H.	DATE: 12-06-02
08-05-05 D.L.G.	FILE: 2213PLAT2.DWG

WEBER COUNTY RECORDER  
ENTRY # \_\_\_\_\_ FEE \_\_\_\_\_  
FILED FOR RECORD & RECORDED  
THIS \_\_\_\_\_ DAY OF \_\_\_\_\_ 20\_\_  
AT \_\_\_\_\_ IN BOOK \_\_\_\_\_ OF \_\_\_\_\_  
PAGE \_\_\_\_\_  
WEBER COUNTY RECORDER  
BY \_\_\_\_\_ DEPUTY