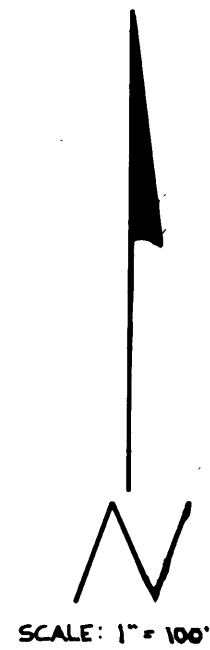


WHISPERING PINES SUBDIVISION

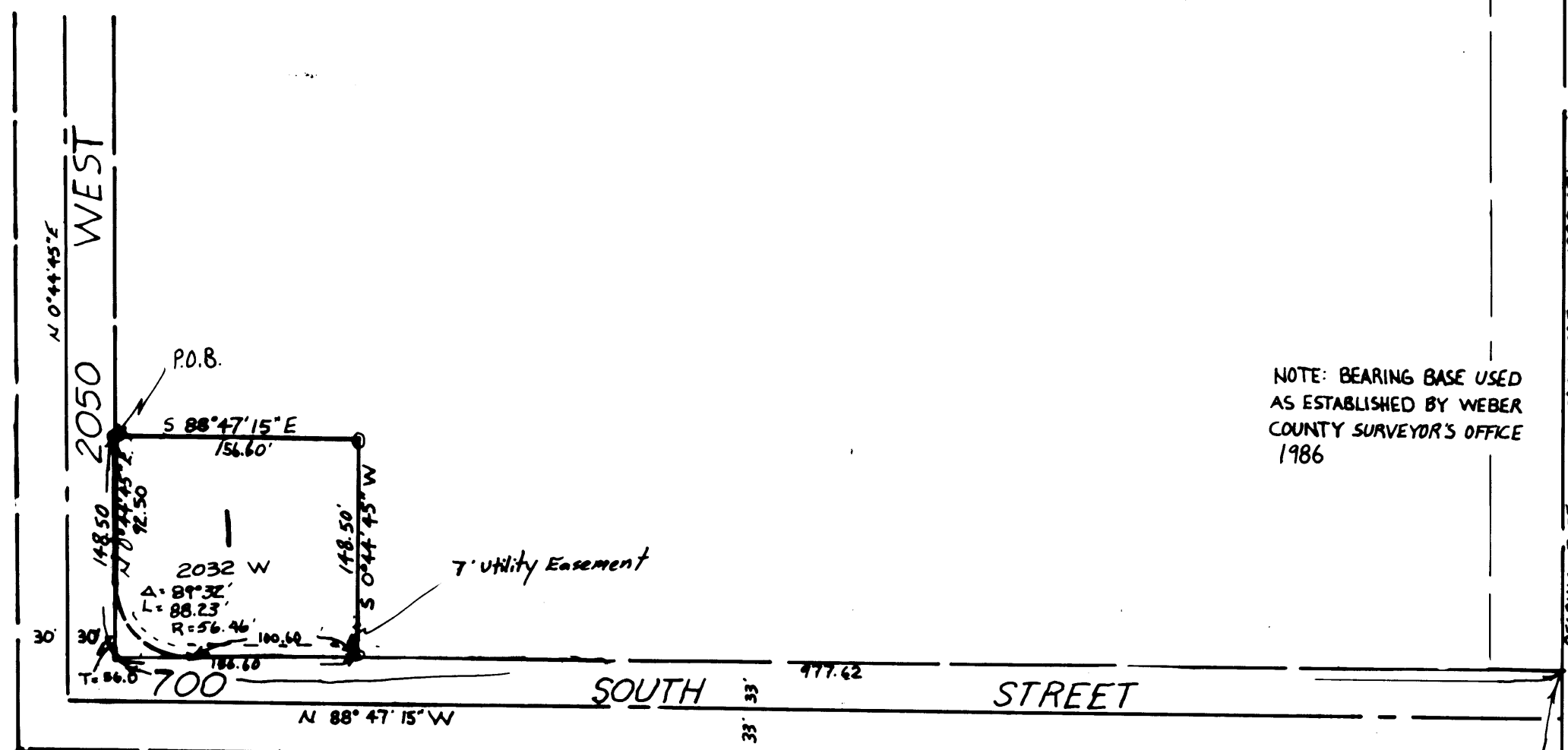
PART OF THE SOUTHEAST QUARTER OF SECTION 14,
TOWNSHIP 6 NORTH RANGE 2 WEST S.L.B. & M.
WEBER COUNTY UTAH JUNE 1987



N.E. COR. SECTION
14, T6N R2W
3" BRASS
1982

NOTE: BEARING BASE USED
AS ESTABLISHED BY WEBER
COUNTY SURVEYOR'S OFFICE
1986

S.E. COR. SECTION
14, T6N R2W.
3" BRASS 1964



NARRATIVE
THE PURPOSE OF THIS SURVEY WAS TO
DIVIDE OFF A PARCEL OF LAND FOR
A SUBDIVISION PLAT SO A HOUSE COULD
BE BUILT. THE PARCEL WAS TAKEN
FROM A 7 ACRE TRACT OF LAND
SURVEYED IN 1980 BY ANOTHER
SURVEYOR

**WEBER COUNTY
PLANNING COMMISSION**
This is to certify that
this subdivision plat was
duly approved by the
Weber County Planning
Commission on the
day of June 1987

Chairman, Weber County
Planning Commission.

**WEBER COUNTY
ENGINEER**

I hereby certify that I have investigated
the lines of survey of the foregoing plat legal
description of the land embraced therein, and
find them to be correct and to agree with the
lines and monuments on record in this office.
I also approve the required improvement
standards and drawings for this subdivision
and the amount of financial guarantee for
these improvements. Signed this 27th day of July 1987.

Signature

**WEBER COUNTY
COMMISSION ACCEPTANCE**

This is to certify that this subdivision
plat and the dedication and financial
guarantee of public improvements thereon
are hereby accepted by the Commissioners
of Weber County, Utah this 27th day
of July 1987.

Chairman, Weber County Commission

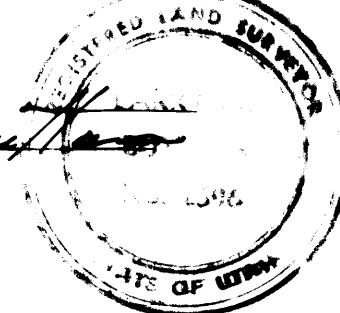
SURVEYORS CERTIFICATE

I, Larry M. Butters, a registered Land Surveyor in the State of
Utah, do hereby certify that this plat of
in Weber County, Utah has been correctly drawn to designated
scale and is a true and correct representation of the following
description of lands included in said subdivision, based on data
compiled from records in the Weber County Recorder's Office
and of a survey made on the ground.

Signed this 15th day of JUNE 1987

RLS 2596
Licence No.

Larry M. Butters
Signature



OWNERS DEDICATION

We, the undersigned owners of the herein described tract of land,
do hereby set apart and subdivide the same into lots and streets as
shown on the plat and name said tract
and do hereby dedicate, grant and convey to Weber County, Utah
all those parts or portions of said tract of land designated as streets
the same to be used as public thoroughfares forever, and also grant
and dedicate a perpetual right and easement over, upon and under
the lands designated on the plat as public utility, storm water
detention ponds and drainage easements, the same to be used for
the installation, maintenance, and operation of public utility
service lines, storm drainage facilities or for the perpetual
preservation of water drainage channels in their natural state
whichever is applicable as may be authorized by Weber County,
Utah, with no buildings or structures being erected within
such easements.

Signed this 18th day of June 1987

[Signatures]

ACKNOWLEDGEMENT

State of Utah } ss
County of Weber }
On the 18th day of June 1987, personally appeared before me, the
undersigned Notary Public, the signers of the above owners Dedication
in number, who duly acknowledged to me they signed it
freely and voluntarily and for the purposes therein mentioned.
12-20-88
Commission Expires Notary Public

DESCRIPTION
Part of the Southeast Quarter of section 14, Township 6 North,
Range 2 West, T6N R2W, S.L.B. & M. Survey, beginning
at the corner of Meridian, the Survey, bearing
0 30' 19" East 131.10 feet, and North 88 47' 15" West 87.70
feet and thence East 11.40 feet from the corner
Corner of said Quarter Section and thence South 88
15" East 15.00 feet, thence South 0 11' 30" West 50 feet
to the North Right of Way of 700 feet, and thence North 88
17' 15" West 100 feet along North Right of Way of 700 feet
thence South 0 11' 30" West 50 feet, and thence East 88
15" West 100 feet to the corner of said Quarter Section.

- LEGEND**
- o REBAR SET WITH CAP 1/2" DIAM. 24" LONG
 - PK. Nail and Flagging

RECEIVED
OCT 2 1987
Weber County Surveyor

BUTTERS SURVEYING
CLIENT: LES SYME
SURVEY LOCATION:
S.E. 1/4 SECTION 14, T6N R2W
DATE: JUNE 15, 1987

WEBER COUNTY RECORDS
INDEXED
000036