

KEY

- 1/2" REBAR W/CAP MARKED MDC 103573
- ◻ CORNER NOT SET
- ⊕ FOUND NAIL ON TOP OF CURB
- ⊞ FOUND REBAR WITH CAP
- 7' UTILITY & DRAINAGE EASEMENT

Beginning at the Northeast corner of LOT 37 MOUNTAIN SHADOWS SUBDIVISION NO. 2; thence N 78° 20' W 4.00' along the northerly lot line of said lot; thence S 0° 26' 30" W 20.00' parallel to the east line of said lot; thence S 78° 20' E 4.00' to the east line of said lot; thence N 0° 26' 30" E 20.00' along east line of said lot to the Point Of Beginning.
 AS RECORDED IN THE WEBER COUNTY RECORDERS OFFICE BOOK _____ AND PAGE 220, 23, 17

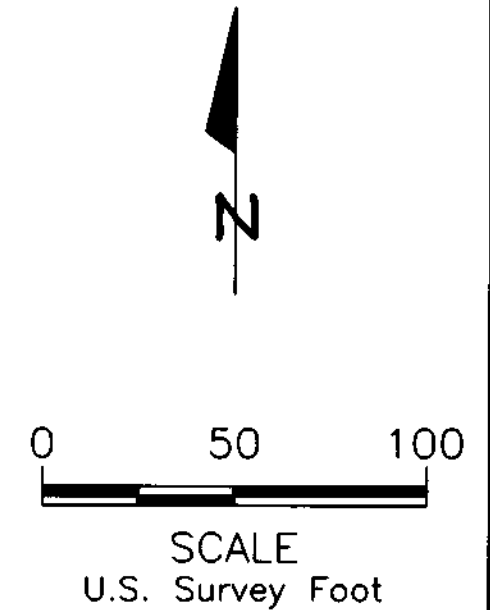
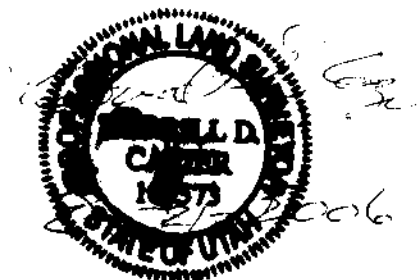
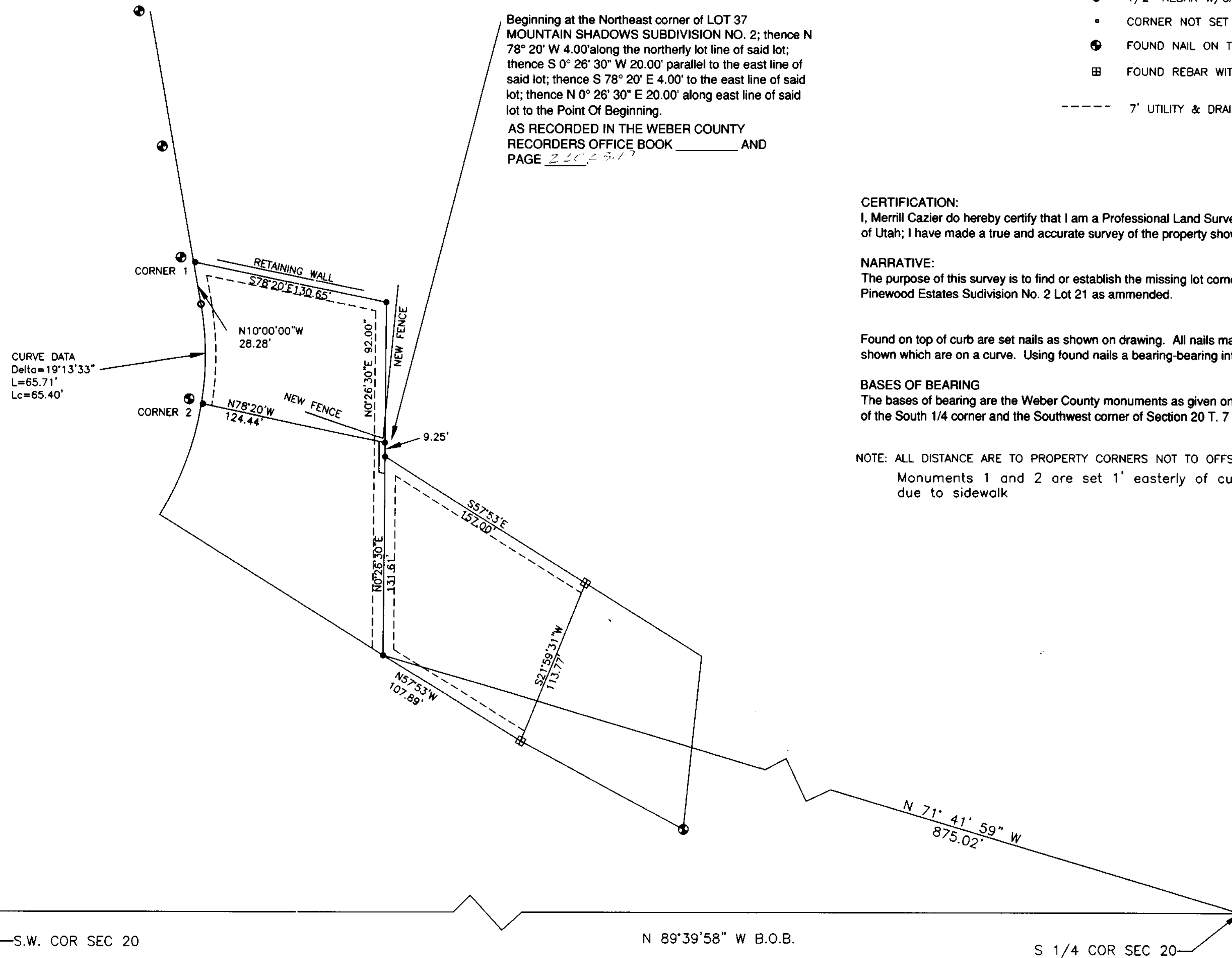
CERTIFICATION:
 I, Merrill Cazier do hereby certify that I am a Professional Land Surveyor and hold License Number 103573 as prescribed by the State of Utah; I have made a true and accurate survey of the property shown hereon in accordance with 17-23-17 of the Utah State Code.

NARRATIVE:
 The purpose of this survey is to find or establish the missing lot corner of the Mountain Shadows Subdivision No. 2 Lot #38 and Pinewood Estates Subdivision No. 2 Lot 21 as amended.

Found on top of curb are set nails as shown on drawing. All nails match closely to the subdivision plats except corners 1 and 2 as shown which are on a curve. Using found nails a bearing-bearing intersect was used to establish lost corners.

BASES OF BEARING
 The bases of bearing are the Weber County monuments as given on the Mountain Shadows Subdivision No. 2 of the South 1/4 corner and the Southwest corner of Section 20 T. 7 N., R. 1 W. SLM

NOTE: ALL DISTANCE ARE TO PROPERTY CORNERS NOT TO OFFSET MONUMENTS
 Monuments 1 and 2 are set 1' easterly of calculated position due to sidewalk



COUNTY RECORDER		
INST. # _____	BK. _____	PG. _____
TIME _____	DATE _____	
COUNTY RECORDER RECORDS OF WEBER COUNTY, STATE OF UTAH		
FEE _____		

NATALIE & SHIRLEY NIGRO
 Mountain Shadows Subdivision No. 2 Lot #38 and
 Pinewood Estates Subdivision No. 2 Lot 21 as amended

WEBER COUNTY, UTAH

SURVEYED BY: MERRILL CAZIER
 4315 S. 1050 W.
 RIVERDALE, UTAH 84405
 801-621-3661

RECEIVED
 AUG 20 2006
 WEBER CO SURVEYOR

00366

00366