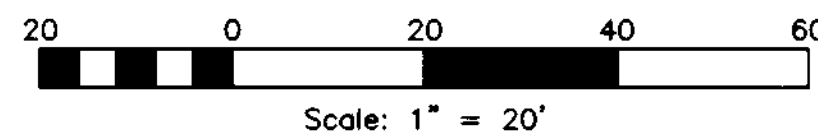


Legend

- = FOUND STREET MONUMENT
- = SET 5/8" REBAR AND PLASTIC CAP STAMPED "REEVE & ASSOCIATES"
- = BOUNDARY LINE
- = LOT LINE
- - - = ADJOINING PROPERTY
- - - = ROAD CENTERLINE
- x - x - = FENCE LINE
- = CONCRETE
- ▨ = HOUSE



Boundary Description

PART OF SOUTH HALF OF SECTION 16, T.5N., R.1W., S.L.B.&M., U.S. SURVEY.

ALL OF LOT 26 OF DUFFIN HEIGHTS SUBDIVISION IN SOUTH OGDEN, WEBER COUNTY, UTAH.

CONTAINING 0.34 ACRES

Basis of Bearings

THE BASIS OF BEARINGS FOR THIS PLAT IS THE LINE BETWEEN TWO FOUND MONUMENTS ON WINDEMERE LANE. SHOWN HEREON AS N60°28'50"W.

Narrative

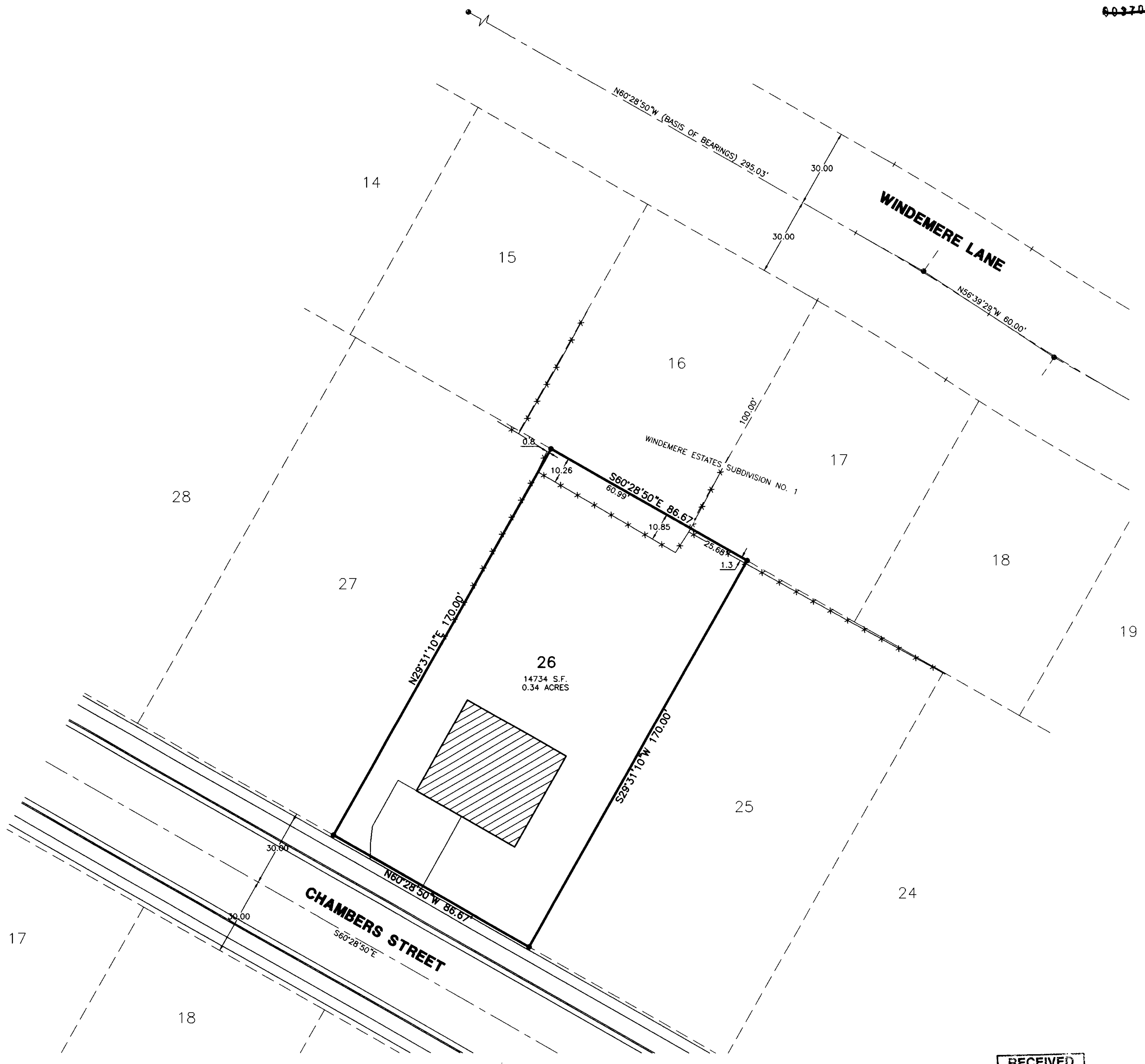
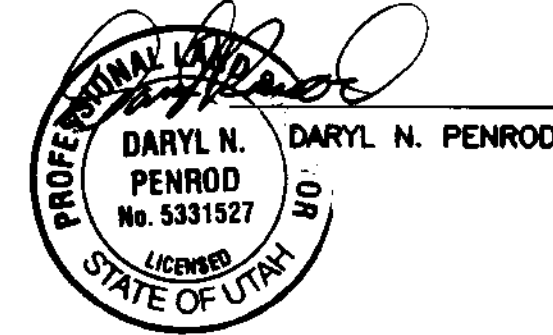
THE PURPOSE OF THIS SURVEY WAS TO DETERMINE LOT 26 OF DUFFIN HEIGHTS SUBDIVISION. ALL LOT CORNERS WERE SET WITH A 5/8" REBAR AND PLASTIC CAP STAMPED "REEVE & ASSOCIATES". CONTROL FOR SURVEY WAS THE FOUND MONUMENTS IN WINDEMERE LANE IN WINDEMERE ESTATES SUBDIVISION NO. 1. CALCULATIONS FROM RECORD PLATS OF WINDEMERE ESTATES SUBDIVISION NO. 1 AND DUFFIN HEIGHTS SUBDIVISION FROM SAID MONUMENTS FIT WELL WITH EXISTING OCCUPATION LINES AND PHYSICAL IMPROVEMENTS. SURVEY REQUESTED BY ROBERT HALL.

Surveyor's Certificate

I, DARYL N. PENROD, DO HEREBY CERTIFY THAT I AM A REGISTERED PROFESSIONAL LAND SURVEYOR IN THE STATE OF UTAH IN ACCORDANCE WITH TITLE 58, CHAPTER 22, PROFESSIONAL ENGINEERS AND LAND SURVEYORS ACT; AND THAT I HAVE COMPLETED A SURVEY OF THE PROPERTY DESCRIBED ON THIS PLAT IN ACCORDANCE WITH SECTION 17-23-17 AND HAVE VERIFIED ALL MEASUREMENTS, AND HAVE PLACED MONUMENTS AS REPRESENTED ON THIS PLAT. I FURTHER CERTIFY THAT THIS PLAT IS A CORRECT REPRESENTATION OF THE LAND SURVEYED AND HAS BEEN PREPARED IN CONFORMITY WITH THE MINIMUM STANDARDS AND REQUIREMENTS OF THE LAW.

SIGNED THIS 2nd DAY OF October, 2006

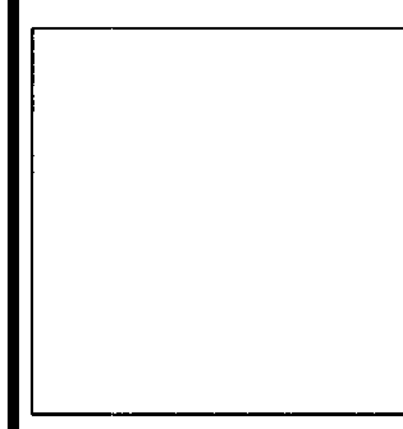
5331527
UTAH LICENSE NUMBER



Reeve & Associates, Inc.
 4155 S. WASHINGTON BLVD., SUITE 310, OGDEN, UTAH 84403
 TEL: (801) 621-3100 FAX: (801) 621-3008 www.reeve-associ.com

REVISIONS	DESCRIPTION
DATE	

All of Lot 26 of Duffin Heights Subdivision
 SOUTH OGDEN CITY, WEBER COUNTY, UTAH
Record of Surety for Robert Hall



Project Info.

Surveyor:	D. PENROD
Designer:	N. ANDERSON
Begin Date:	06-28-06
Name:	ROBERT HALL
Scale:	1"=20'
Checked:	
Number:	5291-01

RECEIVED
 OCT 10 2006
 WEBER CO SURVEYOR