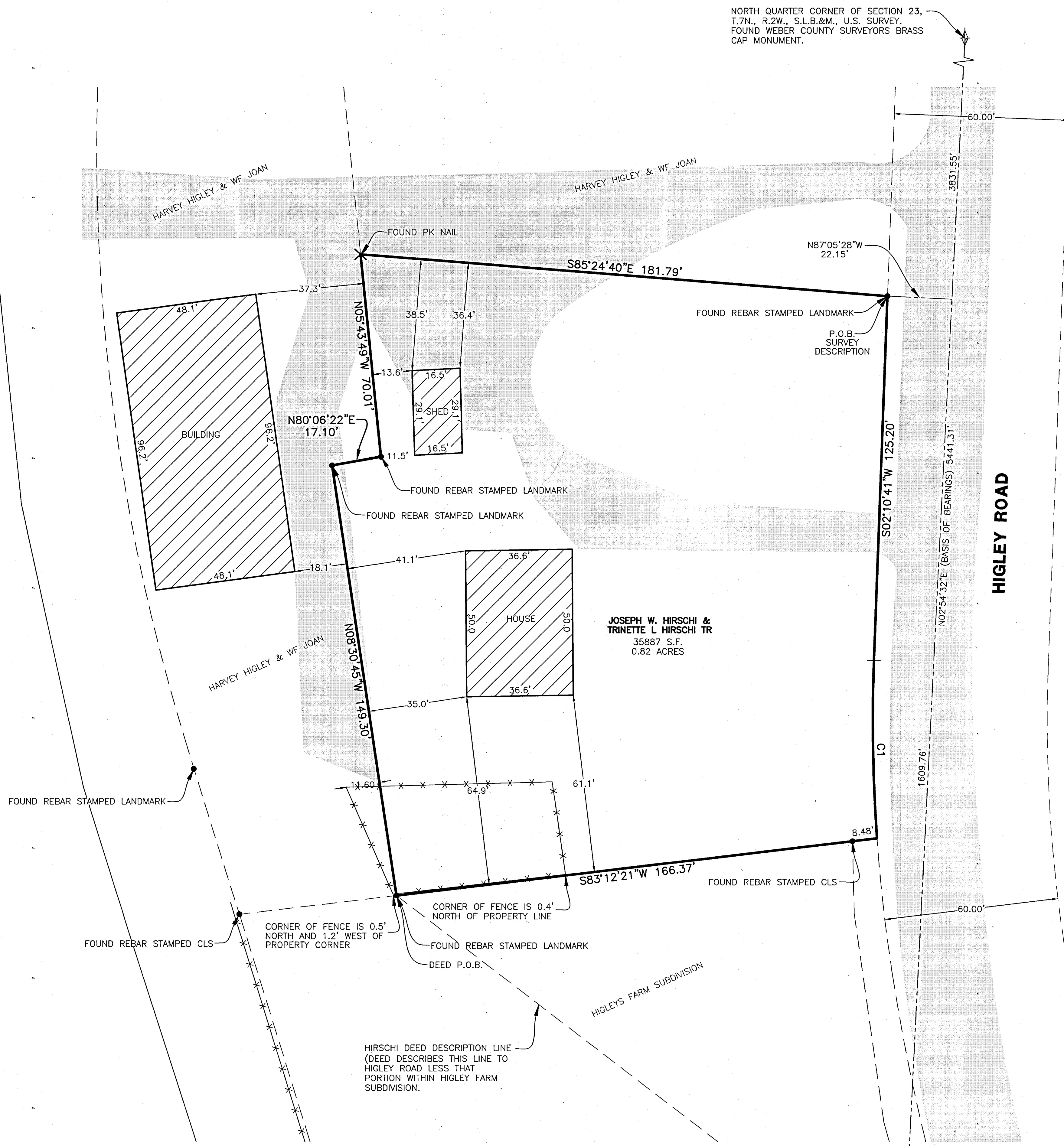


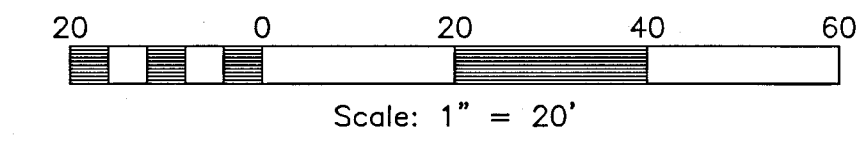
WILLARD CANAL



SOUTH QUARTER CORNER OF SECTION 23,  
T.7N., R.2W., S.L.B.&M., U.S. SURVEY.  
FOUND WEBER COUNTY SURVEYORS BRASS  
CAP MONUMENT.

**Legend**

- = SECTION CORNER
- = PK NAIL
- = REBAR
- = BOUNDARY LINE
- = ADJOINING PROPERTY
- = FENCE LINE
- = SECTION TIE LINE
- = EXISTING PAVEMENT
- = EXISTING BUILDING



**Surveyed Description**

PART OF THE WEST HALF OF SECTION 23, T.7N., R.2W., S.L.B.&M., U.S. SURVEY, DESCRIBED AS FOLLOWS:

BEGINNING AT A POINT N02°54'32"E ALONG THE QUARTER SECTION LINE 1609.76 FEET AND N87°05'28"W 22.15 FEET FROM THE SOUTH QUARTER CORNER OF SECTION 23; THENCE S02°10'41"W A DISTANCE OF 125.20 FEET TO A 560.61 FOOT RADIUS CURVE THE CENTER OF WHICH BEARS S87°49'19"E THENCE SOUTHEASTERLY TO THE LEFT THROUGH A CENTRAL ANGLE OF 06°13'47" A DISTANCE OF 60.95 FEET; THENCE S83°12'21"W A DISTANCE OF 166.37 FEET; THENCE N08°30'45"W A DISTANCE OF 149.30 FEET; THENCE N80°06'22"E A DISTANCE OF 17.10 FEET; THENCE N05°43'49"W A DISTANCE OF 70.01 FEET; THENCE S85°24'40"E A DISTANCE OF 181.79 FEET TO THE POINT OF BEGINNING.

CONTAINING 0.82 ACRES

**Narrative**

THE PURPOSE OF THIS PLAT IS TO DETERMINE THE BOUNDARY OF THE HIRSCHI PROPERTY AND CHECK THE RELATION TO RECENT SURVEY BY LANDMARK ENGINEERING AND PHYSICAL IMPROVEMENTS. THE DEED WAS CALCULATED AS PER RECORD DESCRIPTION. THE CALL NORTH FROM THE SOUTH QUARTER CORNER WAS MAINTAINED WITH THE BASIS OF BEARING AS SHOWN. THE HIGLEY FARM SUBDIVISION WAS THEN CALCULATED AS PER RECORD AND THIS AREA WAS SUBTRACTED FROM THE FIRST AS STATED IN THE DEED. ALL CALCULATIONS MATCHED MONUMENTATION PLACED BY LANDMARK AND CLS ON PREVIOUS SURVEYS. SURVEY REQUESTED BY JOE HIRSCHI.

**Basis of Bearings**

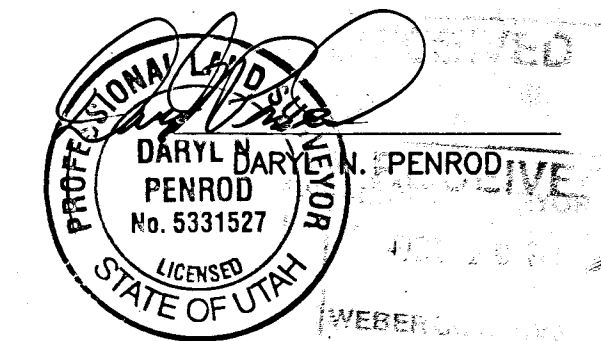
THE BASIS OF BEARINGS FOR THIS PLAT IS THE SECTION LINE BETWEEN THE SOUTH QUARTER CORNER AND THE NORTH QUARTER CORNER OF SECTION 23, T.7N., R.2W., S.L.B.&M., U.S. SURVEY AS CALCULATED FROM WEBER COUNTY RECORD. SHOWN HEREON AS N02°54'32"E.

**Surveyors Certificate**

I, DARYL N. PENROD, DO HEREBY CERTIFY THAT I AM A REGISTERED PROFESSIONAL LAND SURVEYOR IN THE STATE OF UTAH IN ACCORDANCE WITH TITLE 58, CHAPTER 22, PROFESSIONAL ENGINEERS AND LAND SURVEYORS ACT; AND THAT I HAVE COMPLETED A SURVEY OF THE PROPERTY DESCRIBED ON THIS PLAT IN ACCORDANCE WITH SECTION 17-23-17 AND HAVE VERIFIED ALL MEASUREMENTS, AND HAVE PLACED MONUMENTS AS REPRESENTED ON THIS PLAT. I FURTHER CERTIFY THAT THIS PLAT IS A CORRECT REPRESENTATION OF THE LAND SURVEYED AND HAS BEEN PREPARED IN CONFORMITY WITH THE MINIMUM STANDARDS AND REQUIREMENTS OF THE LAW.

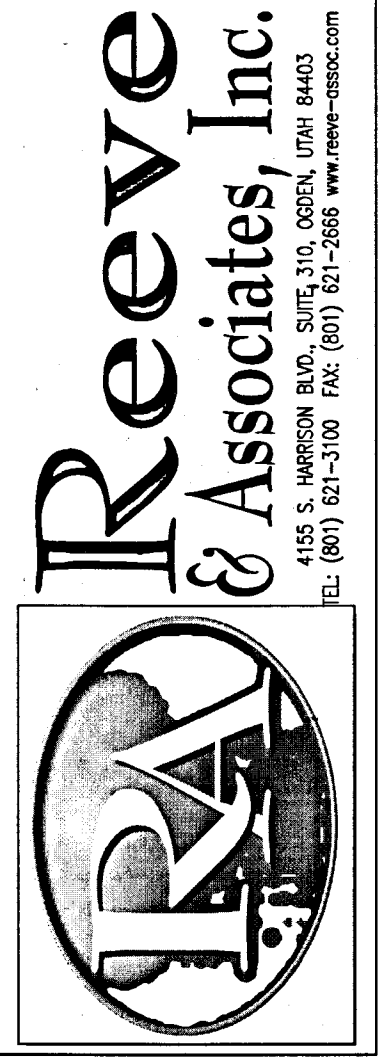
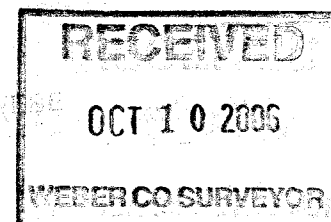
SIGNED THIS 2<sup>nd</sup> DAY OF October, 2006

5331527  
UTAH LICENSE NUMBER



**Curve Table**

NUMBER	RADIUS	DELTA	LENGTH	TANGENT	CHORD DIR	CHD LENGTH
C1	560.61'	06°13'47"	60.95'	30.51'	N00°56'12"W	60.92'



REVISIONS	DESCRIPTION
DATE	

**Hirschi Property**  
FARR WEST CITY, WEBER COUNTY, UTAH

**Record of Survey**

**Project Info.**  
Surveyor: D. PENROD  
Designer: N. ANDERSON  
Begin Date: 06-06-06  
Name: JOE HIRSCHI  
RECORD OF SURVEY  
Scale: 1"=20'  
Checked: [Signature]  
Number: 5278-01

Sheet 1 of 1  
1 Sheets