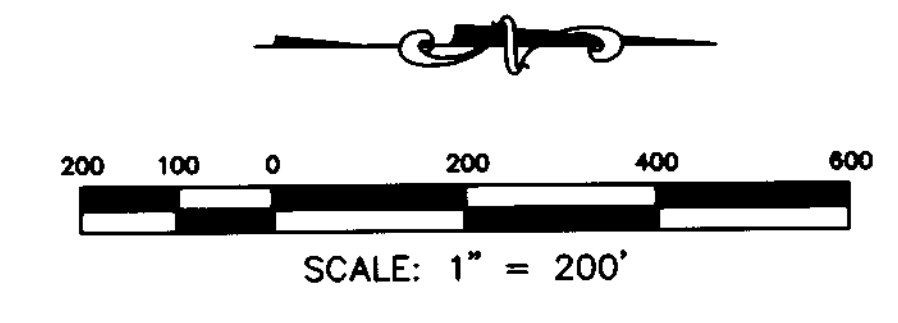
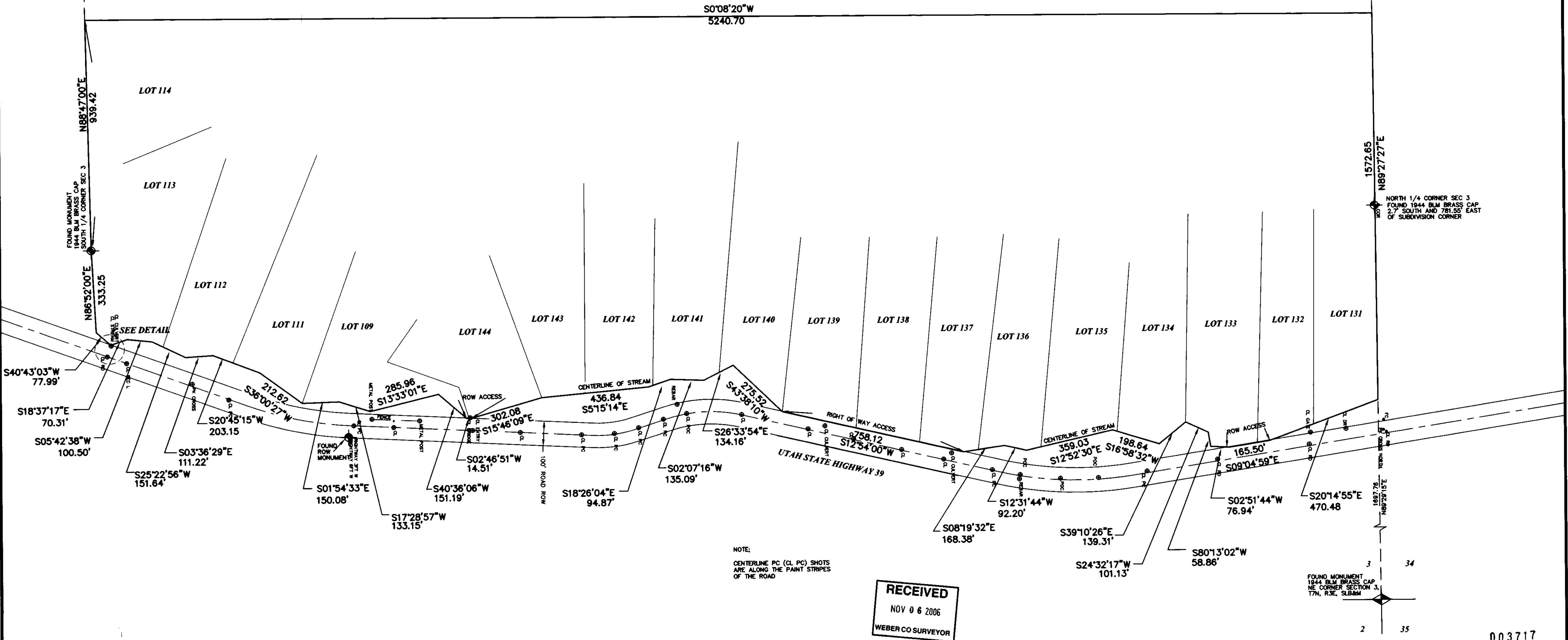


**DESCRIPTION**  
THE EASTERLY BOUNDARY OF DIAMOND T ESTATES #3, AN UNRECORDED SUBDIVISION LOCATED IN SECTION 3, TOWNSHIP 7 NORTH, RANGE 3 EAST, SALT LAKE BASE AND MERIDIAN, WEBER COUNTY, UTAH.

**NARRATIVE**  
THIS IS RETRACEMENT OF DIAMOND T ESTATES #3 (AN UNRECORDED SUBDIVISION) SIGNED BY ROSS SYPHUS 27 AUGUST 1973. THE PLAT WAS OBTAINED FROM THE WEBER COUNTY SURVEYOR'S OFFICE. THE SURVEY WAS BASED ON THE MONUMENTS FOUND AS SHOWN. BASIS OF BEARING IS AS SHOWN. THE RIGHT-OF-WAY SHOWN IN THE DETAIL IS BASED UPON THE FOUND RIGHT-OF-WAY MONUMENT AND ROTATING THE HIGHWAY PLAT BEARINGS TO MATCH THE SYPHUS SURVEY. THE PAINT STRIPES FOR THE HIGHWAY WERE ALSO MEASURED AND ARE AS SHOWN.



**CERTIFICATE**  
I, VON R. HILL, A PROFESSIONAL LAND SURVEYOR ACCORDING TO THE LAWS OF THE STATE OF UTAH, DO CERTIFY THAT I HAVE SURVEYED THE PARCEL OF GROUND SHOWN HEREON.



NOTE:  
CENTERLINE PC (CL PC) SHOTS ARE ALONG THE PAINT STRIPES OF THE ROAD

