

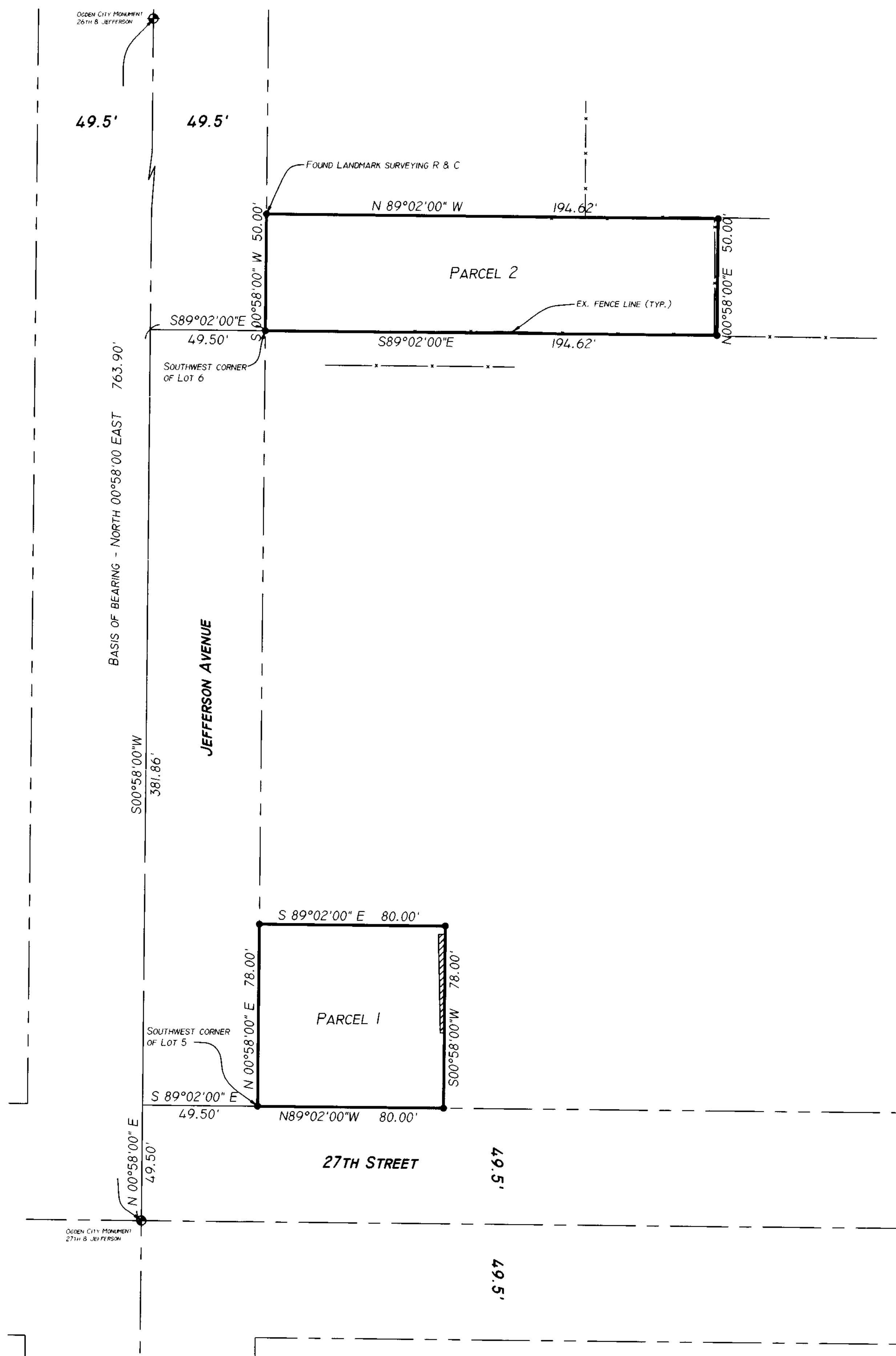


SCALE: 1" = 30'

RECORD OF SURVEY

003786

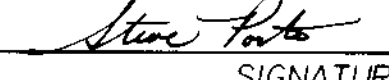
PART OF LOTS 5, 6 & 7, BLOCK 14, PLAT A, OGDEN CITY SURVEY, WEBER COUNTY, UTAH

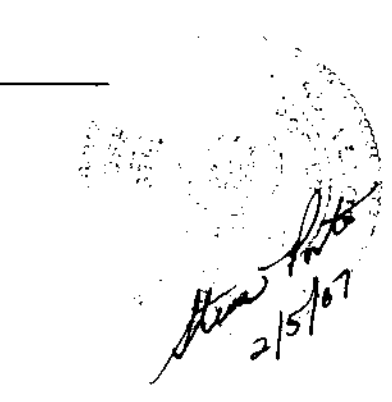


SURVEYOR'S CERTIFICATE

I, STEVE A. PORTER, A REGISTERED LAND SURVEYOR IN THE STATE OF UTAH, HOLDING A LICENSE IN ACCORDANCE WITH TITLE 58, CHAPTER 22, PROFESSIONAL ENGINEERS AND PROFESSIONAL LAND SURVEYORS LICENSING ACT; DO HEREBY CERTIFY THAT THIS PLAT, WHICH IS IN WEBER COUNTY, UTAH, HAS BEEN SURVEYED AND DESCRIBED ON THE PLAT. ALL MEASUREMENTS HAVE BEEN VERIFIED AND CORRECTLY DRAWN TO SCALE, AND MONUMENTS HAVE BEEN PLACED AS REPRESENTED ON THE PLAT FROM A SURVEY MADE ON THE GROUND, AND IS A TRUE AND CORRECT REPRESENTATION OF THE FOLLOWING DESCRIPTION OF LANDS, BASED ON DATA COMPILED FROM RECORDS IN THE WEBER COUNTY RECORDERS OFFICE AND OGDEN CITY ENGINEERS OFFICE.

SIGNED THIS 5TH DAY OF February 2007.

P.L.S. # 376071 
SIGNATURE



BOUNDARY DESCRIPTIONS


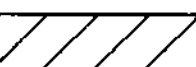
PARCEL 1
A PART OF LOT 5 IN BLOCK 14, PLAT "A" OF OGDEN CITY SURVEY, BEGINNING AT THE SOUTHWEST CORNER OF SAID LOT 5, AND RUNNING THENCE NORTH 00°58'00" 78 FEET, THENCE SOUTH 89°02'00" EAST 80 FEET, THENCE SOUTH 00°58'00" WEST 78 FEET, THENCE NORTH 89°02'00" WEST 80 FEET TO THE POINT OF BEGINNING.

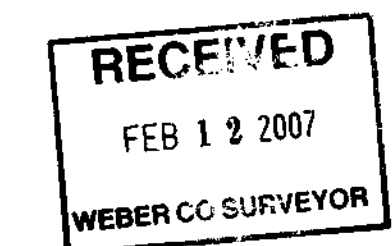

PARCEL 2
A PART OF LOTS 6 & 7, BLOCK 14, PLAT "A" OF OGDEN CITY SURVEY, BEGINNING AT THE SOUTHWEST CORNER OF SAID LOT 6, AND RUNNING THENCE NORTH 00°58'00" 50 FEET, THENCE SOUTH 89°02'00" EAST 194.62 FEET, THENCE SOUTH 00°58'00" WEST 50 FEET, THENCE NORTH 89°02'00" WEST 194.62 FEET TO THE POINT OF BEGINNING.

NARRATIVE

THE SURVEY WAS REQUESTED BY NEIGHBORHOOD DEVELOPMENT TO PREPARE THE PARCEL TO BE SOLD. THE BASIS OF BEARING FOR BOTH OF THESE SURVEYS IS BETWEEN THE OGDEN CITY MONUMENTS FOUND AT 27TH STREET & JEFFERSON AVENUE AND 26TH STREET AND JEFFERSON AVENUE WHICH IS NORTH 00°58'00" EAST HAVING A DISTANCE OF 763.90 FEET.

LEGEND

-  = SET 5/8" REBAR W/ CAP
-  = ENCROACHMENT OF NEIGHBORS DRIVEWAY

OGDEN CITY ENGINEERING
2549 WASHINGTON BLVD, SUITE 610
OGDEN, UT 84401

003786