

REVISIONS	DESCRIPTION
DATE	

Record of Survey
 PART OF THE SOUTHEAST QUARTER OF SECTION 23, T.6N., R.1E., S.L.B.&M., U.S. SURVEY
 WEBER COUNTY, UTAH

Merrill Bean

Basis of Bearings

THE BASIS OF BEARING FOR THIS PLAT IS THE SECTION LINE BETWEEN THE EAST QUARTER CORNER AND THE SOUTHEAST CORNER OF SECTION 23, T.6N., R.1E., S.L.B.&M., U.S. SURVEY AS DEFINED BY THE WEBER COUNTY SURVEYOR. SHOWN HEREON AS S00°48'08"W.

Narrative

THE PURPOSE OF THIS PLAT IS TO RESURVEY A PARCEL OF LAND LOCATED IN WEBER COUNTY. ALL BOUNDARY CORNERS WERE SET WITH A 5/8" REBAR AND PLASTIC CAP STAMPED "REEVE & ASSOCIATES". THE BEARINGS WERE ROTATED TO MATCH THE WEBER COUNTY COORDINATE SYSTEM USING S00°48'08"W INSTEAD OF DUE SOUTH ON THE SECTION LINE AS NOTED ON THE DEED.

Boundary Description

PART OF THE SOUTHEAST QUARTER OF SECTION 23, T.6N., R.1E., S.L.B.&M., U.S. SURVEY, DESCRIBED AS FOLLOWS:
 BEGINNING AT THE EAST QUARTER CORNER OF SECTION 23; THENCE S00°48'08"W A DISTANCE OF 39.03 FEET; THENCE A CURVE TURNING TO THE LEFT WITH AN ARC LENGTH OF 349.01 FEET, WITH A RADIUS OF 605.57 FEET WITH A CHORD BEARING S48°33'32"W, WITH A CHORD LENGTH OF 344.20 FEET; THENCE S32°02'54"W A DISTANCE OF 109.07 FEET; THENCE A CURVE TURNING TO THE RIGHT WITH AN ARC LENGTH OF 156.50 FEET, WITH A RADIUS OF 901.89 FEET, WITH A CHORD BEARING OF S37°01'10"W, WITH A CHORD LENGTH OF 156.30 FEET; THENCE N46°10'10"W A DISTANCE OF 67.27 FEET; THENCE A CURVE TURNING TO THE LEFT WITH AN ARC LENGTH OF 481.21 FEET, WITH A RADIUS OF 333.70 FEET, WITH A CHORD BEARING OF N02°31'34"E, WITH A CHORD LENGTH OF 440.59 FEET; THENCE S89°39'10"E A DISTANCE OF 439.63 FEET; TO THE POINT OF BEGINNING.

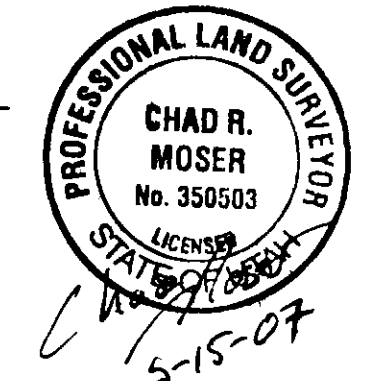
CONTAINING 1.96 ACRES

Surveyor's Certificate

I, CHAD R. MOSER, DO HEREBY CERTIFY THAT I AM A REGISTERED PROFESSIONAL LAND SURVEYOR IN THE STATE OF UTAH IN ACCORDANCE WITH TITLE 58, CHAPTER 22, PROFESSIONAL ENGINEERS AND LAND SURVEYORS ACT; AND THAT I HAVE COMPLETED A SURVEY OF THE PROPERTY DESCRIBED ON THIS PLAT IN ACCORDANCE WITH SECTION 17-23-17 AND HAVE VERIFIED ALL MEASUREMENTS; AND HAVE PLACED MONUMENTS AS REPRESENTED ON THIS PLAT. I FURTHER CERTIFY THAT THIS PLAT IS A CORRECT REPRESENTATION OF THE LAND SURVEYED AND HAS BEEN PREPARED IN CONFORMITY WITH THE MINIMUM STANDARDS AND REQUIREMENTS OF THE LAW.

SIGNED THIS 15 DAY OF May, 2007

350503
 UTAH LICENSE NUMBER



Chad Moser
 CHAD R. MOSER

RECEIVED

WEBER CO SURV

003822

RECEIVED

MAY 17 2007

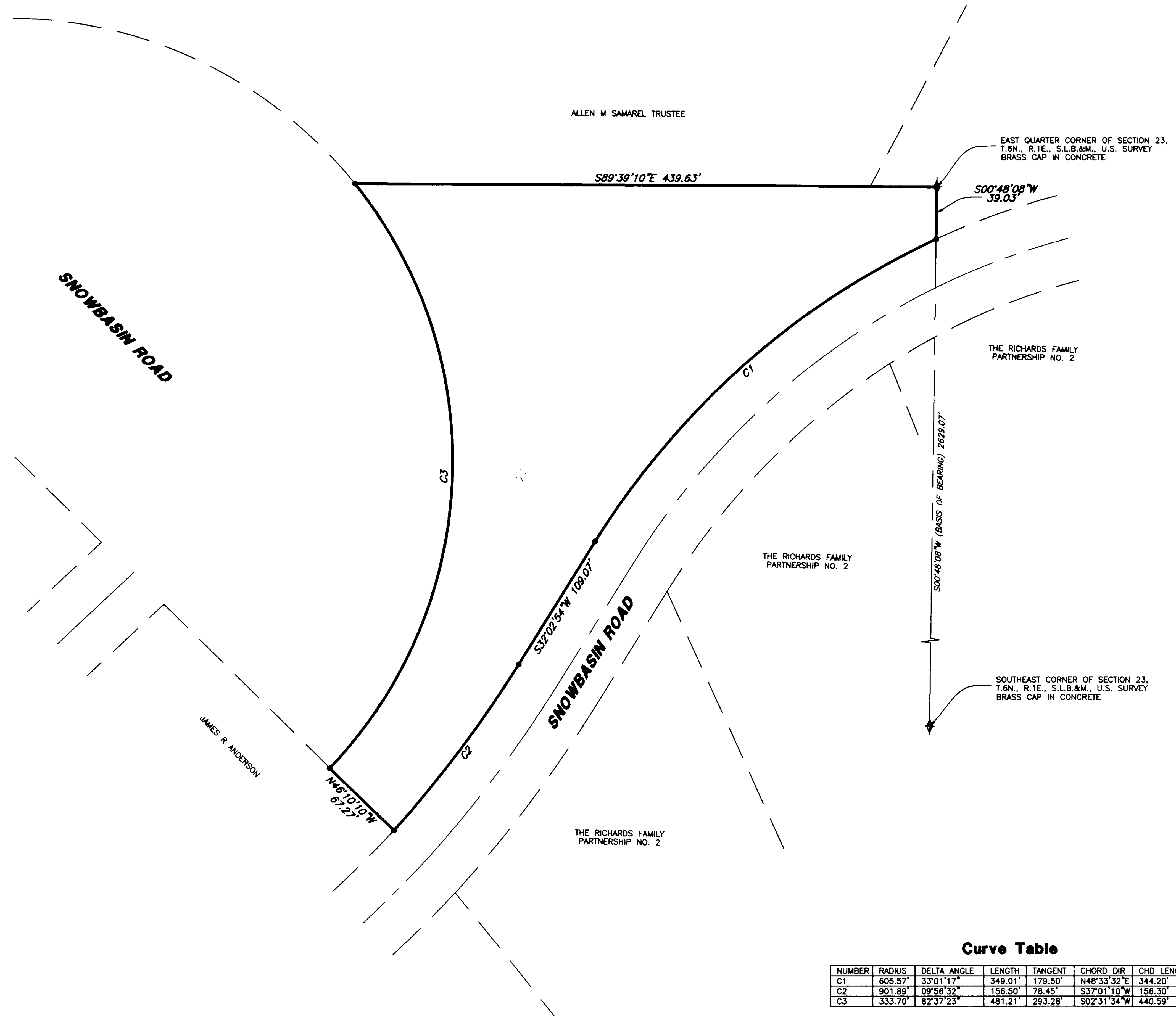
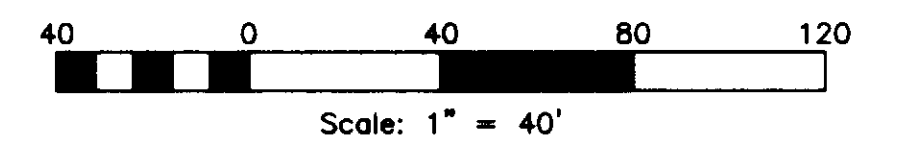
WEBER CO SURVEYOR

Curve Table

NUMBER	RADIUS	DELTA ANGLE	LENGTH	TANGENT	CHORD DIR	CHD LENGTH
C1	605.57'	33°01'17"	349.01'	179.50'	N48°33'32"E	344.20'
C2	901.89'	09°56'32"	156.50'	78.45'	S37°01'10"W	156.30'
C3	333.70'	82°37'23"	481.21'	293.28'	S02°31'34"W	440.59'

Legend

- = SECTION CORNER
- = SET 5/8" REBAR AND PLASTIC CAP STAMPED "REEVE & ASSOCIATES"
- = BOUNDARY LINE
- = ADJOINING PROPERTY
- = SECTION TIE LINE



Project Info.
 Surveyor: CHAD R. MOSER
 Designer: F. ROGHE
 Begin Date: APRIL 10, 2007
 Name: MERRILL BEAN
 Scale: 1" = 40'
 Checked:
 Number: 3044-02

Sheet **1**
 1 Sheets