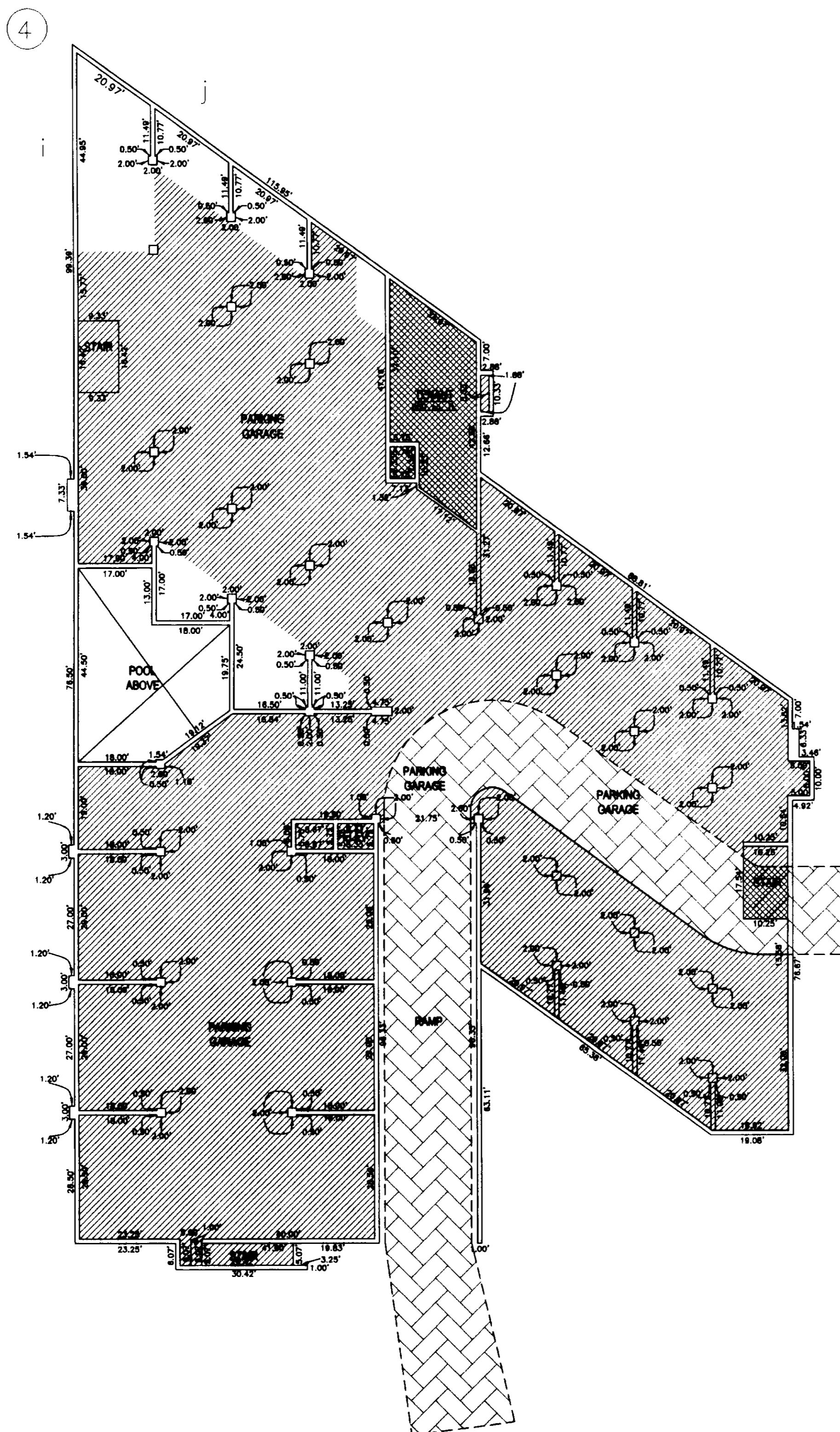
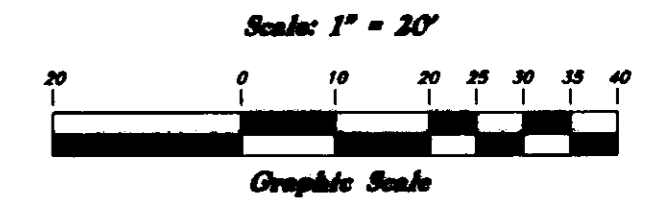


Powder Ridge Condominiums Phase 1 Building 3 Amended

A part of Section 6, Township 7 North, Range 2 East
Salt Lake Base and Meridian
Weber County, Utah
August 2007



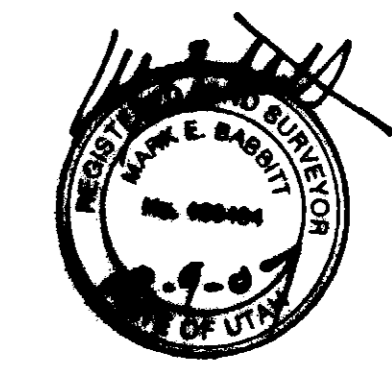
Parking Garage



Level 1

1. Construction of this project was not complete at the time this Condominium Plat was prepared. Upon completion of construction, this map may require amendment in the event of any material change in the final location.
2. Each condominium unit contained within the project as shown on Sheets 2 or 3 is designated by one of the following:
 - Common areas and facilities - [diagonal hatching pattern]
 - Private ownership - [white box]
 - Limited common areas and facilities - [cross-hatching pattern]
 - Limited Access Easement - [diagonal hatching pattern]
 - Fire Lane - [grid hatching pattern]
3. All patios, decks, or balconies, contained within the project are considered Limited Common Areas. They are set aside and reserved for the use of the respective condominium unit to which they are attached and/or appurtenant.
4. All other area contained within the project, but not shown with diagonal stripe or cross hatched lines are considered Common Area.
5. Dimensions on Sheet 1 are to exterior foundation only.
6. All Common Area and Limited Common area where necessary is considered to be an easement for public utility and drainage purposes.
7. All exterior walls and walls between Units are Common Areas.

003957
RECEIVED
AUG 30 2007
WEBER CO SURVEYORS



WEBER COUNTY RECORDER

ENTRY NO. _____ FEE PAID _____

RECORDED _____ AT _____

IN BOOK _____ OF OFFICIAL

RECORDS, PAGE _____ RECORDED

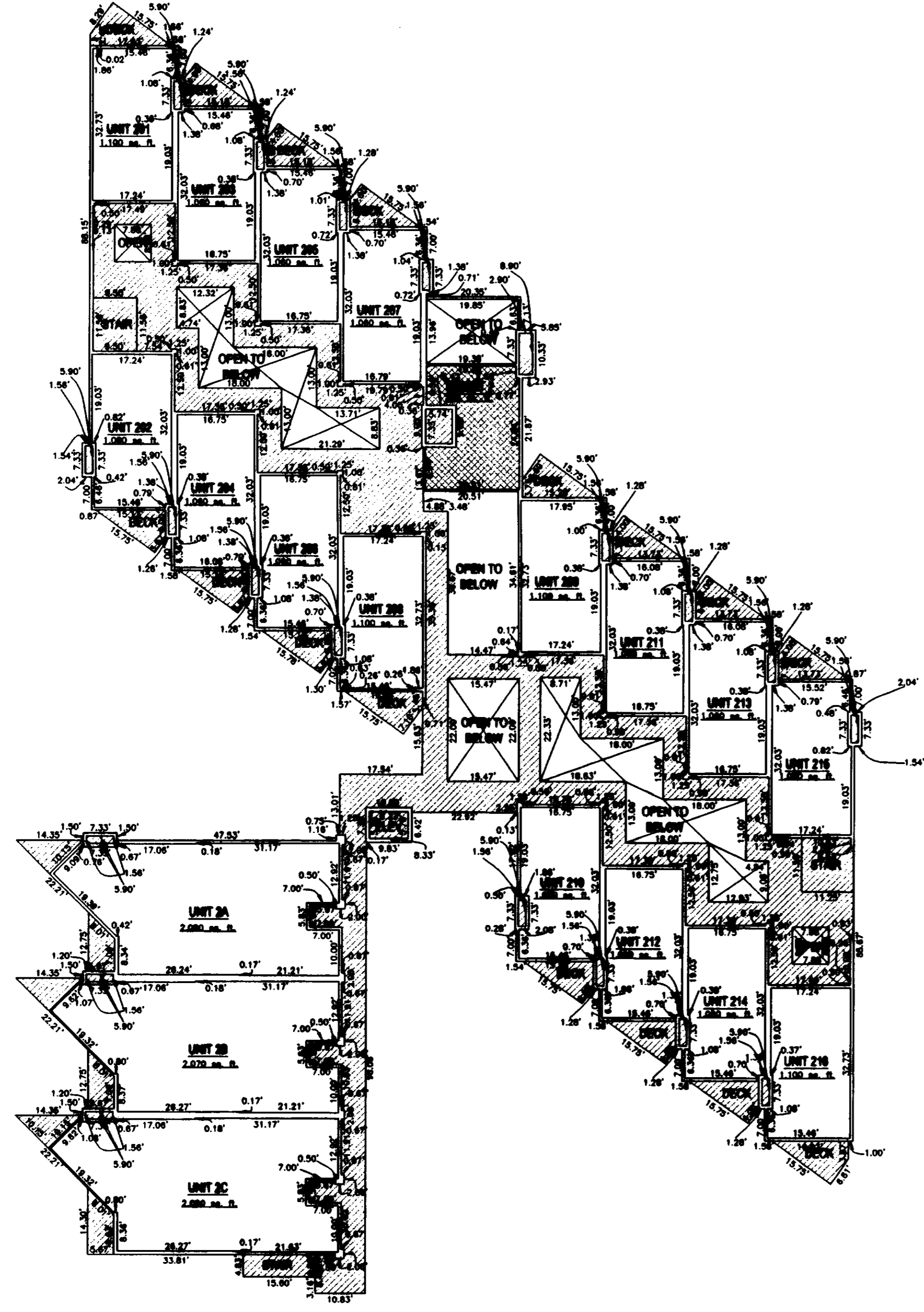
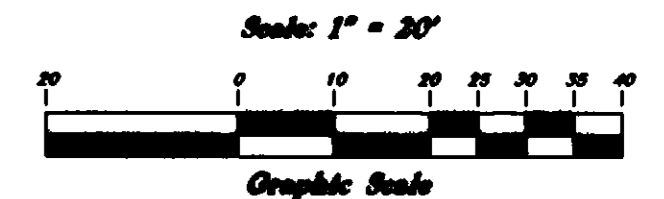
FOR _____

WEBER COUNTY RECORDER

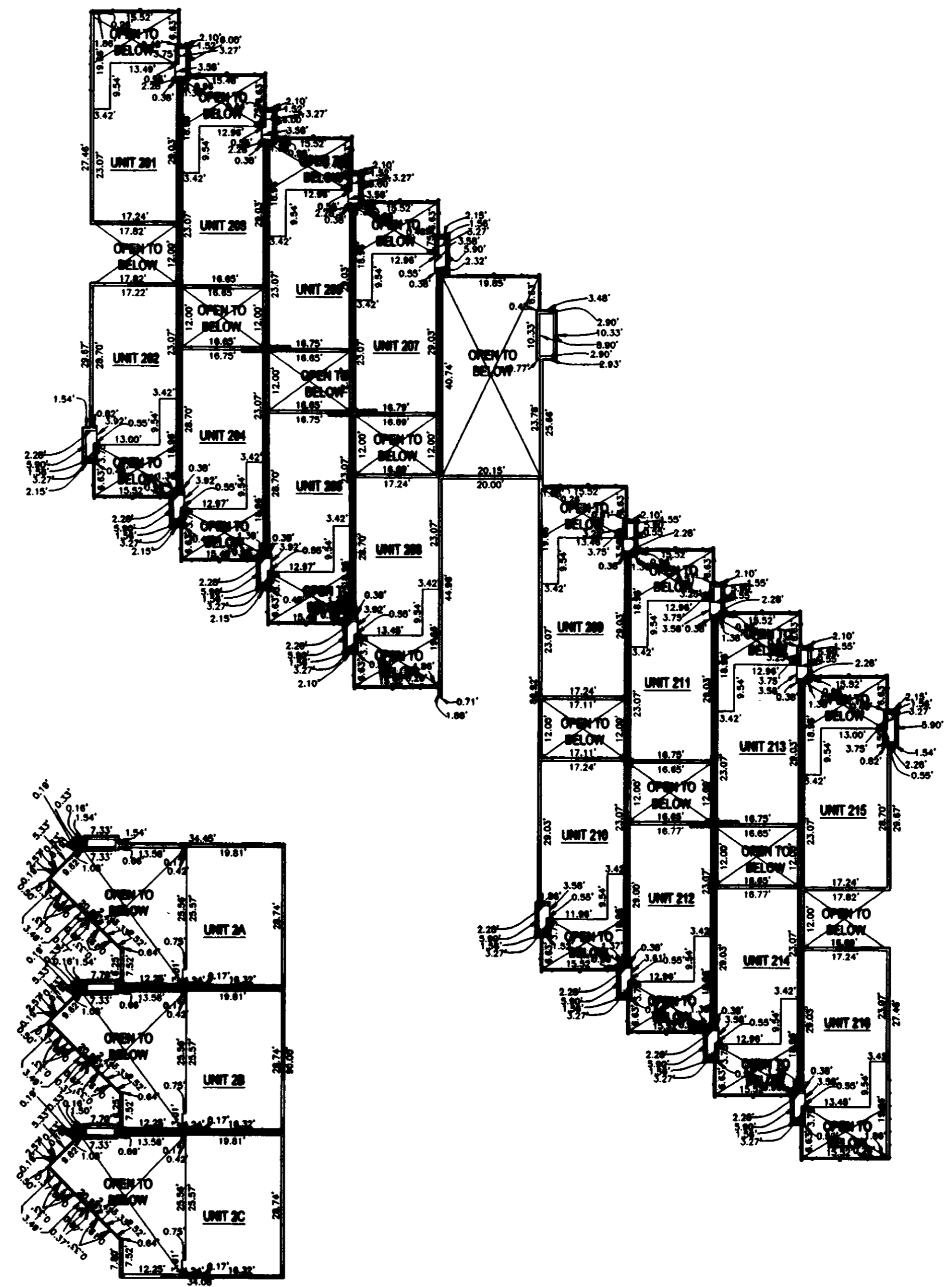
BY: _____

Powder Ridge Condominiums Phase 1 Building 3 Amended

A part of Section 6, Township 7 North, Range 2 East
Salt Lake Base and Meridian
Weber County, Utah
August 2007



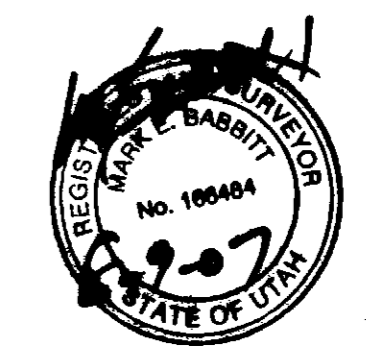
Level 2



Level 3

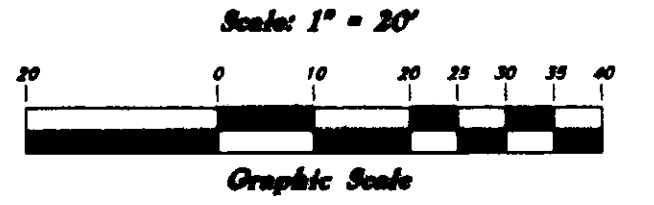
1. Construction of this project was not complete at the time this Condominium Plat was prepared. Upon completion of construction, Map may require amendment in the event of any material change in the final location.
2. Each condominium unit contained within the project as shown on Sheets 2 or 3 is designated by one of the following:
 - Common areas and facilities - [diagonal hatching]
 - Private ownership - [solid white]
 - Limited common areas and facilities - [cross-hatching]
 - Limited Access Easement - [dotted pattern]
 - Fire Lane - [stippled pattern]
3. All patios, decks, or balconies, contained within the project are considered Limited Common Areas. They are set aside and reserved for the use of the respective condominium unit to which they are attached and/or appurtenant.
4. All other area contained within the project, but not shown with diagonal stripe or cross hatched lines are considered Common Area.
5. Dimensions on Sheet 1 are to exterior foundation only.
6. All Common Area and Limited Common area where necessary is considered to be an easement for public utility and drainage purposes.
7. All exterior walls and walls between Units are Common Areas.

GD3857
RECEIVED
AUG 30 2007
WEBER COUNTY

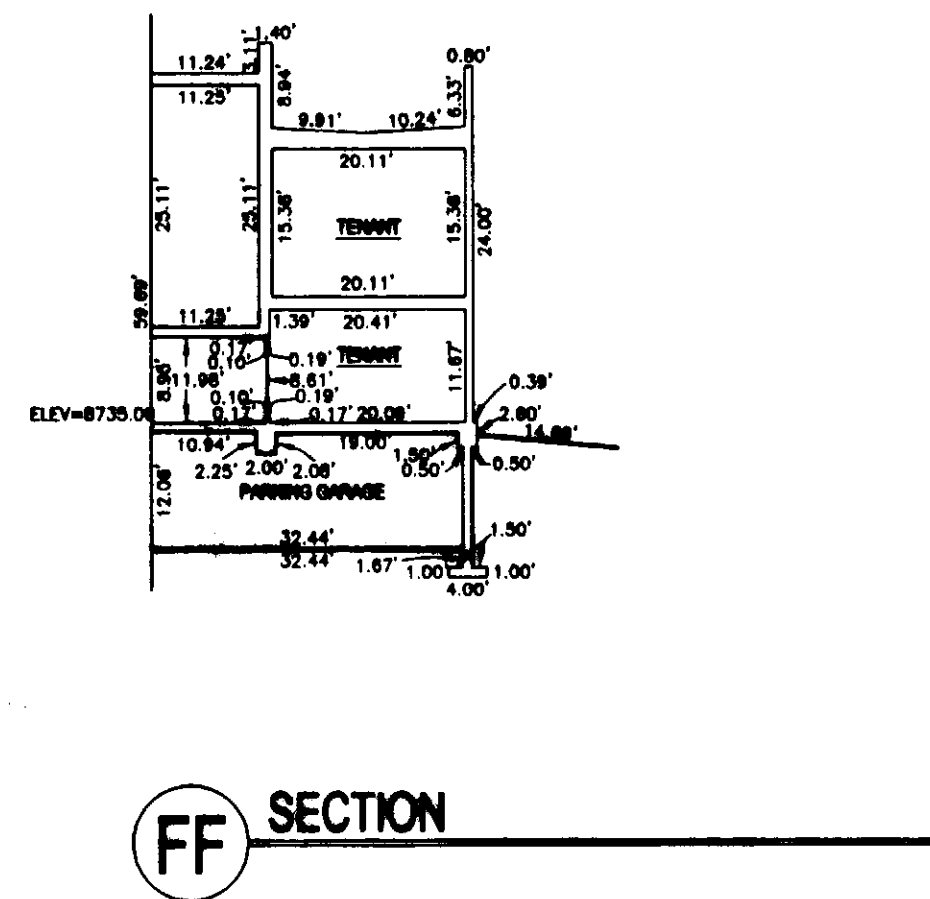
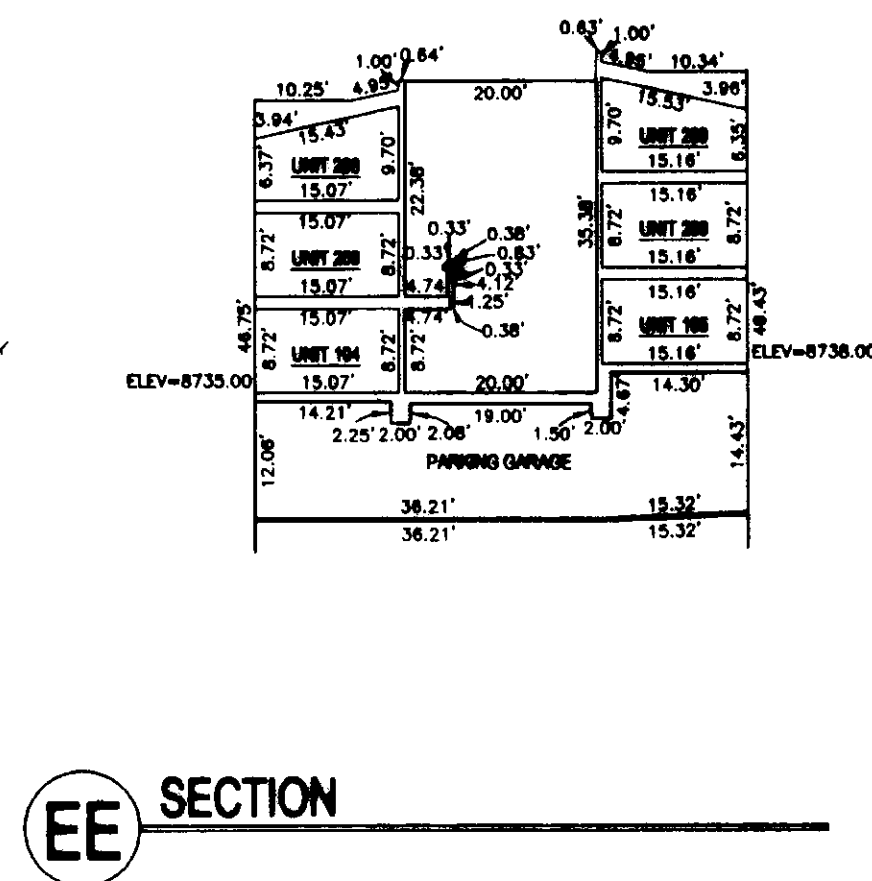
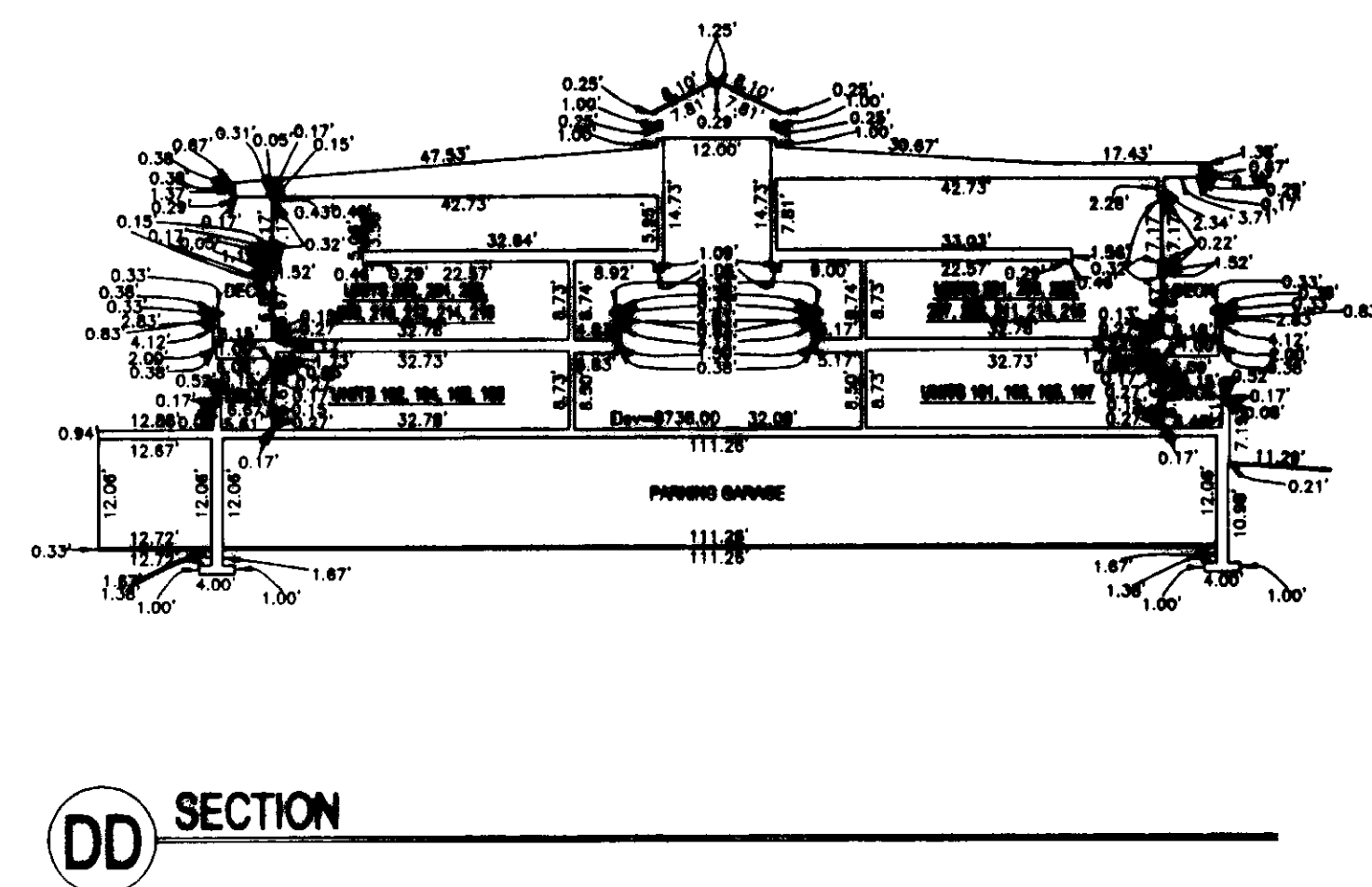
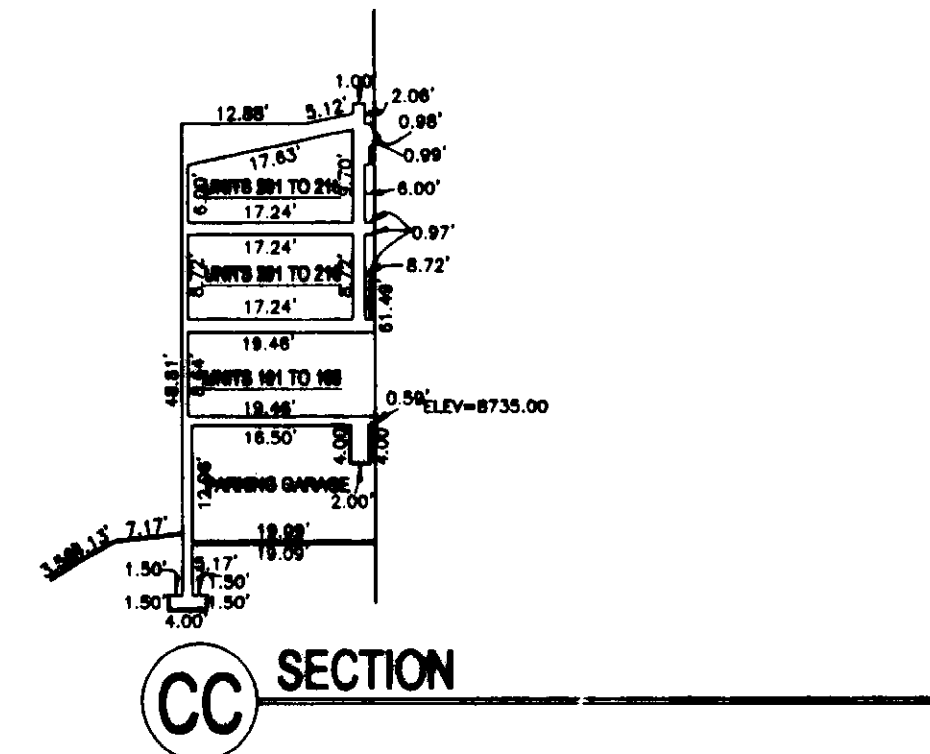
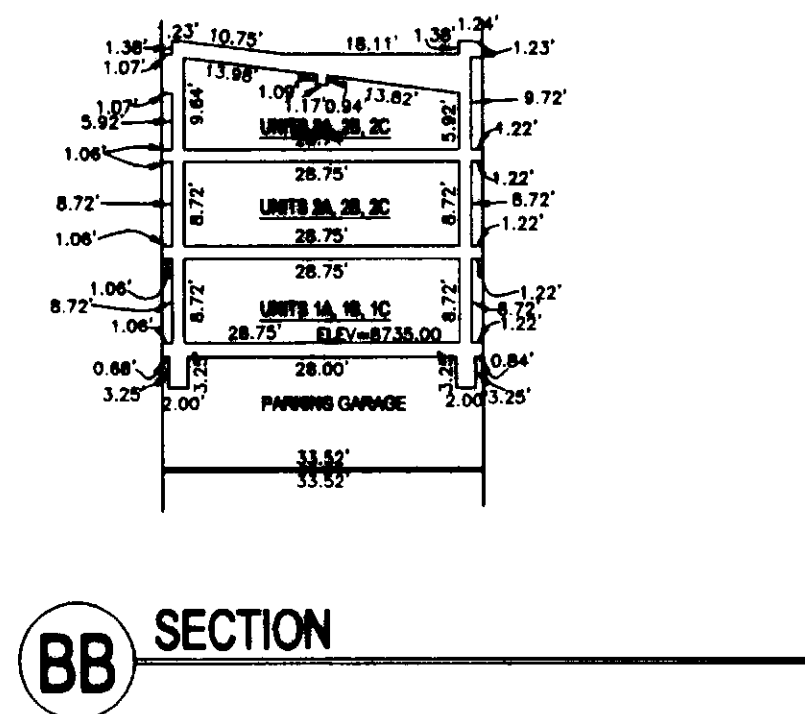
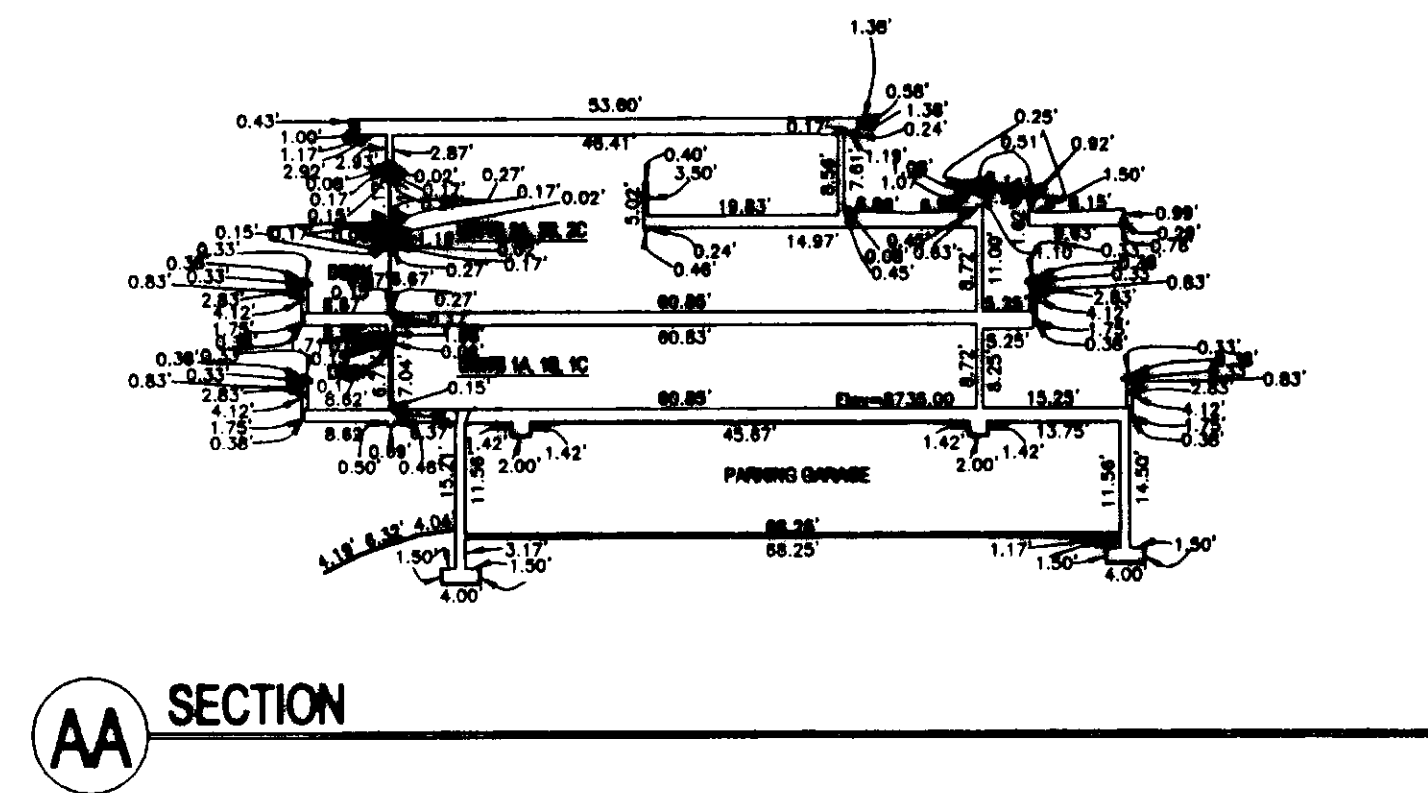


Powder Ridge Condominiums Phase 1 Building 3 Amended

A part of Section 6, Township 7 North, Range 2 East
Salt Lake Base and Meridian
Weber County, Utah
August 2007



1. Construction of this project was not complete at the time this Condominium Plat was prepared. Upon completion of construction, Map may require amendment in the event of any material change in the final location.
2. Dimensions on Sheet 1 are to exterior foundation only.
3. All exterior walls and walls between Units are Common Areas.



RECEIVED
AUG 20 2007
WEBER COUNTY RECORDER

