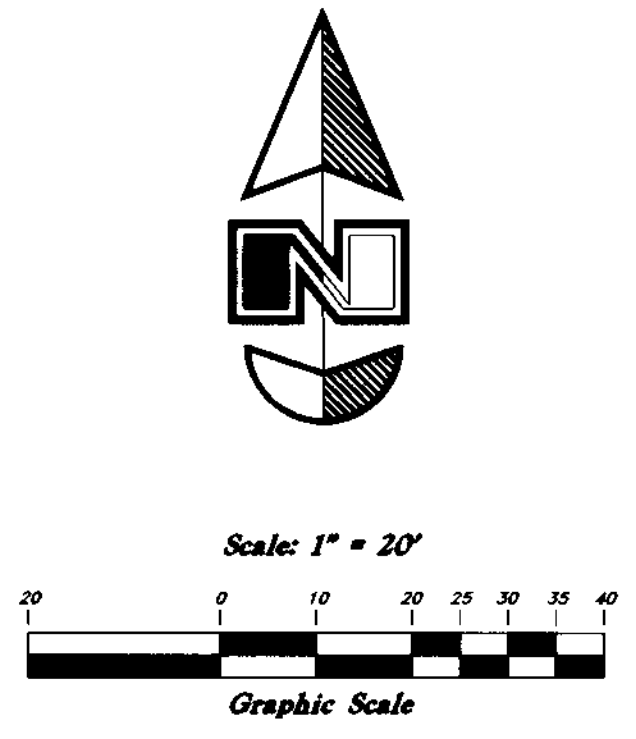
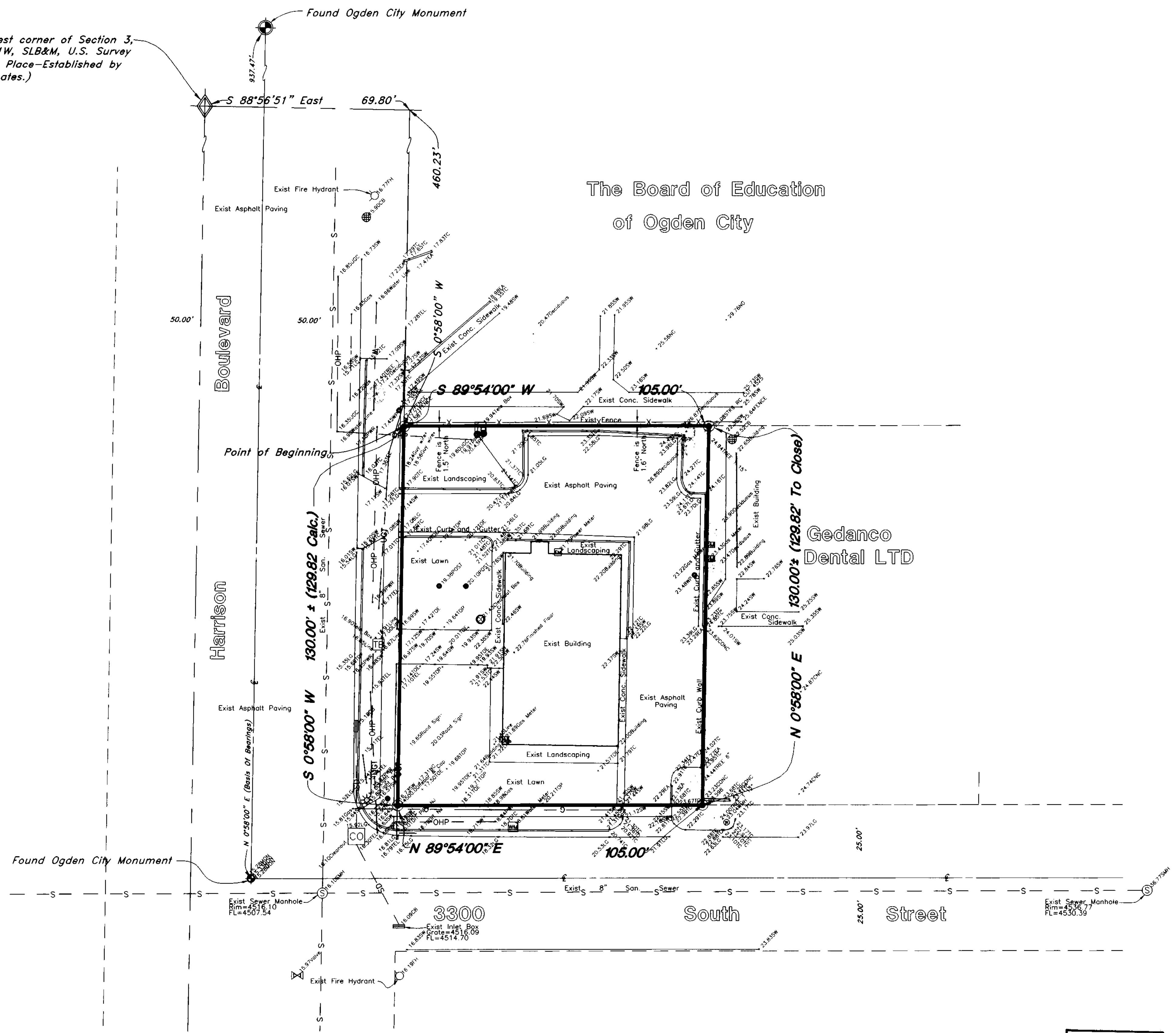


Northwest corner of Section 3, T5N, R1W, SLB&M, U.S. Survey (Not in Place—Established by Coordinates.)



LEGEND

—+—	Centerline	TA	Top of Asphalt	C.M.P.	Corrugated Metal Pipe
—UT—	Buried Telephone line	EA	Edge of Asphalt	R.C.P.	Reinforced Concrete Pipe
—OHT—	Overhead Telephone line	NG	Natural Ground	CONC	Edge of Concrete
—OHP—	Overhead Power line	LG	Lip of Gutter	RWALL	Retaining Wall
—UGP—	Power line	SP	Service Pole	SMH	Sewer Manhole
—S—	Sanitary Sewer line	LP	Light Pole	WV	Water Valve
—PP—	Culinary Water line	PP	Power Pole	CB	Catch Basin
—G—	Gas line	TP	Telephone Pole	DB	Diversion Box
—SD—	Storm Drain line	FH	Fire Hydrant	TC	Top of Curb
—SW—	Secondary Waterline	DIT	Flowline of Ditch	SLD	Sidewalk
—LD—	Land Drain line	TD	Top of Slope	GAS	Gas line Marker
—IW—	Irrigation Waterline	TOP	Top of Slope	GUY	Guy Wire
—X—X—	Fence	CO	Cleanout	BLDG	Building Corner
—P—	Power Pole	FC	Fire Hydrant	NG	Natural Ground
—M—	Water Meter	DMH	Drain Manhole	WV	Water Valve
—T—	Telephone Box	+	Spot Elevation	—LP—	Light Pole
—SMB—	Gas Meter	—	Contour	—P—	Power Pole w/guy
—SMB—	Telephone Box	x99.00	Asphalt	—T—	Deciduous Tree
—SMB—	Sewer Manhole	—	Concrete	—C—	Coniferous Tree
—SMB—	Drain Manhole	—	Building	—N—	Set Nail & Washer
—SMB—	Water Manhole	—	Catch Basin	—R—	Set Rebar & Cap w/ Fencepost
—SMB—	Cleanout Box	—	Monument to be set	—	Section Corner not Found (established by coordinates)
—SMB—	Set Hub & Tack	—			

NARRATIVE

This Survey was requested by Brian Bolt of Richards/Bolt for the Church of Jesus Christ of Latter-day Saints for the purpose of establishing the property corners for this parcel. Ogden City monuments were found at the centerline of the intersections of 32nd and 33rd and Harrison Boulevard. A line bearing N 0°58'00" E between these monuments was used as the basis of bearings. Property corners were monumented as depicted on this drawing.

BOUNDARY DESCRIPTION

A part of the Northwest Quarter of Section 3, Township 5 North, Range 1 West, Salt Lake Base and Meridian, U.S. Survey; Beginning at a point on the East line of Harrison Boulevard, South 88°56'51" East 69.80 feet and South 0°58'00" West 460.23 feet from the Northwest corner of said Quarter Section; Running thence South 0°58'00" West the East line of Harrison Boulevard a distance of 130 feet to the North line of 33rd Street; Thence North 89°54'00" East along the North line of street a distance of 105 feet; thence North 0°58'00" East 130 feet; Thence South 89°54'00" West 105 feet to the Point of Beginning.

SURVEYOR'S CERTIFICATE

I, Gary L. Newman, do hereby certify that I am a Registered Professional Land Surveyor, and that I hold Certificate No. 4778, in accordance with Title 58, Chapter 22, of the Professional Engineers and Surveyors Licensing Act, and I have made a survey of the above described property according to Section 17-23-1 and that the above plat correctly shows the true dimensions of the property surveyed.

Date 10-8-2007

Gary L. Newman
 Gary L. Newman
 Registered Professional Land Surveyor
 State of Utah

RECEIVED
 OCT 24 2007
 WEBER COUNTY SURVEYOR

003906

BENCHMARK:
 Top of Brass Cap Monument found at the intersection of Harrison Boulevard and 33rd Street.
 Elevation 4515.283

<p>Property and Topographic Survey</p> <p>GREAT BASIN ENGINEERING NORTH 5746 South 1475 East - Suite 200 Ogden, Utah 84403 P.O. Box 150048, Ogden, Utah 84415 Ogden (801)304-4615 Salt Lake City (801)221-0222 Fax (801)304-7544</p>		<p>SCALE: 1"=20'</p>	<p>DATE: 16 Jul, 2007</p>	<p>DRWG. NO.</p>
		<p>DRAWN: DH</p>	<p>REVISIONS:</p>	<p>07N305</p>
<p>07N305T</p>				