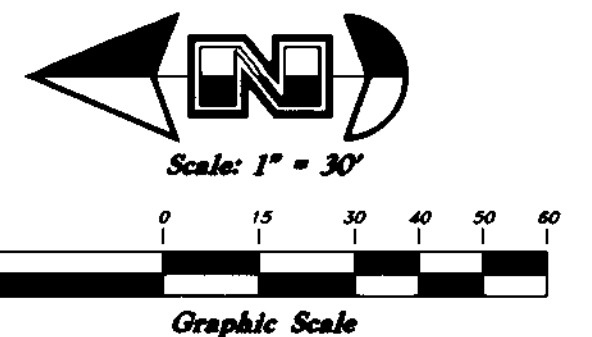
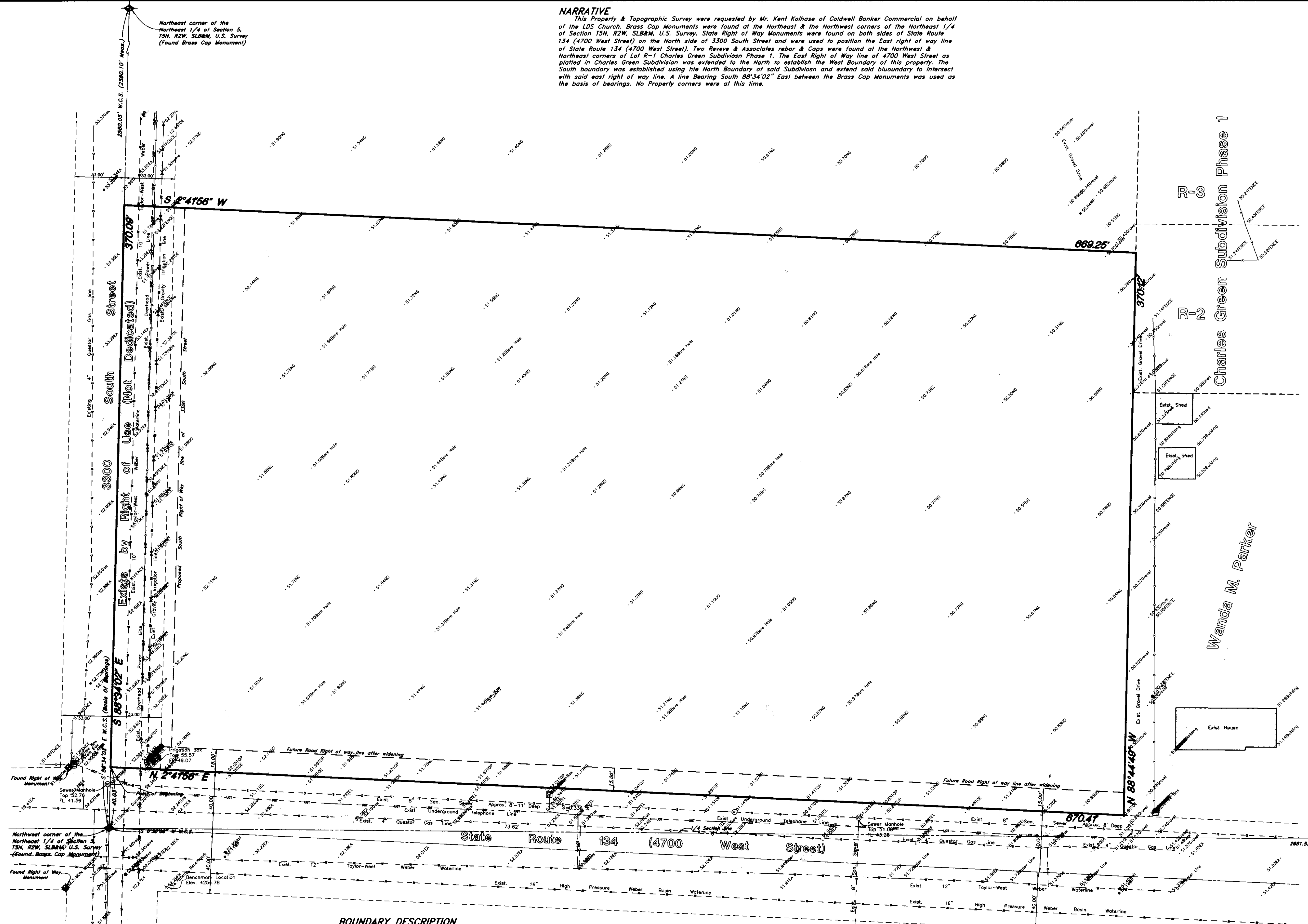


**NARRATIVE**  
 This Property & Topographic Survey were requested by Mr. Kent Kolhase of Coldwell Banker Commercial on behalf of the LDS Church. Brass Cap Monuments were found at the Northeast & the Northwest corners of the Northeast 1/4 of Section 5, T5N, R2W, SLB&M, U.S. Survey. State Right of Way Monuments were found on both sides of State Route 134 (4700 West Street) on the North side of 3300 South Street and were used to position the East right of way line of State Route 134 (4700 West Street). Two Revee & Associates rebar & Caps were found at the Northwest & Northeast corners of Lot R-1 Charles Green Subdivision Phase 1. The East Right of Way line of 4700 West Street as platted in Charles Green Subdivision Phase 1. The East Right of Way line of this property. The South boundary was established using the North Boundary of said Subdivision and extend said boundary to intersect with said east right of way line. A line Bearing South 88°34'02" East between the Brass Cap Monuments was used as the basis of bearings. No Property corners were at this time.



**Legend**

- (Note: All items may not appear on drawing)
- San. Sewer Manhole
  - Water Manhole
  - Storm Drain Manhole
  - Electrical Manhole
  - Catch Basins
  - Exist. Fire Hydrant
  - Fire Hydrant
  - Exist. Water Valve
  - Water Valve
  - Sanitary Sewer
  - Culinary Water
  - Gas Line
  - Irrigation Line
  - Storm Drain
  - Telephone Line
  - Secondary Waterline
  - Power Line
  - Fire Line
  - Land Drain
  - Power pole w/guy
  - Light Pole
  - Fence
  - Flowline of ditch
  - Overhead Power line
  - Corrugated Metal Pipe
  - Concrete Pipe
  - Reinforced Concrete Pipe
  - Ductile Iron
  - PVC
  - TA
  - EA
  - CL
  - FL
  - FF
  - TC
  - TWL
  - TW
  - TCN
  - NC
  - 90
  - 90
  - 95.337A
  - 95.727A
  - R
  - R
  - Direction of Flow
  - Existing Asphalt
  - New Asphalt
  - Heavy Duty Asphalt
  - Concrete
  - Open Face
  - Curb & Gutter



Northeast corner of the Northeast 1/4 of Section 5, T5N, R2W, SLB&M, U.S. Survey (Found Brass Cap Monument)

Northwest corner of the Northeast 1/4 of Section 5, T5N, R2W, SLB&M, U.S. Survey (Found Brass Cap Monument)

BENCHMARK:  
 Top of Brass Cap Monument at the Northwest corner of the Northeast 1/4 of Section 5, T5N, R2W, SLB&M, U.S. Survey Elevation 4252.11  
 TEMPORARY BENCHMARK:  
 Arrowhead on Fire Hydrant Located on the West Side of 4700 West Street across from the Northwest corner of the property. Elevation 4254.78

Southwest corner of the Northeast 1/4 of Section 5, T5N, R2W, SLB&M, U.S. Survey (Not Found)

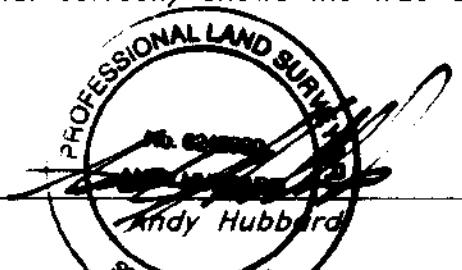
**BOUNDARY DESCRIPTION**

A part of the Northeast Quarter of Section 5, Township 5 North, Range 2 West, Salt Lake Base and Meridian, U.S. Survey:  
 Beginning at a point 40.03 feet South 88°34'02" East along the Section line from the Northwest corner of said Section and running thence South 88°34'02" East 370.09 feet along said Section line; thence South 2°41'56" West 669.25 feet to the North boundary of Charles Green Subdivision Phase 1 in West Haven City, Weber County, Utah; thence North 88°44'49" West 370.12 feet along said North boundary and said North boundary extended to the East right-of-way line of State Route 134 (4700 West Street); thence North 2°41'56" East 670.41 feet along said East right-of-way line to the point of beginning.  
 Contains 5.690 Acres

**SURVEYOR'S CERTIFICATE**

I, Andy Hubbard, do hereby certify that I am a Registered Professional Land Surveyor, and that I hold Certificate No. 6242920, in accordance with Title 58, Chapter 22, of the Professional Engineers and Surveyors Licensing Act, and I have made a survey of the above described property according to Section 17-23-17 and that the above plat correctly shows the true dimensions of the property surveyed.

Date 4-2-2008



**Property & Topographic Survey**

**GREAT BASIN ENGINEERING NORTH**  
 CONSULTING ENGINEERS AND SURVEYORS  
 5746 South 1475 East, Suite 200  
 Ogden, Utah 84403  
 P.O. Box 130048, Ogden, Utah 84415  
 Ogden (801)384-4618 Salt Lake City (801)381-0222 Fax (801)382-7844

SCALE: 1" = 30'  
 DATE: 2 Oct, 2007  
 DRAWN: AH  
 REVISIONS: 17 Dec, 2007  
 07N316T

LDS Church Kanabville Stake Center  
 A part of the Northeast 1/4 of Section 5, T5N, R2W, SLB&M, U.S. Survey  
 West Haven City, Weber County, Utah

RECEIVED  
 APR 2 2008  
 WEBER CO SURVEYOR

004047

LDS Church Property #500-1320

07N316