

NARRATIVE

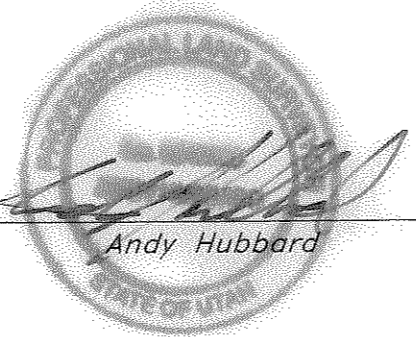
This Overall Boundary Survey was requested by Mr. Greg Kendrick in preparation for subdividing this parcel. The property was previously surveyed by Reeve & Reeve in January 1997 (W.C.S. File #1509). Information from that survey, the Valley Estates 2 Subdivision Plat, and occupation on the ground were used to determine the boundaries of this parcel, the section was broken down as depicted on this drawing, a line bearing S 0°12'17" W (State Plane) (S 0°12'40" W W.C.S.) between the Northwest corner and the Southwest corner of Section 17, Township 7 North, Range 1 East was used as the basis of bearings. Property corners were not set at this time but will be set with the subdivision plat.

BOUNDARY DESCRIPTION
 A part of the North quarter corner of Section 17, Township 7 North, Range 1 East, Salt Lake Base and Meridian, U.S. Survey;
 Beginning at a point on the West Line of Valley Estates 2 Subdivision in Weber County, Utah. Said point is 2677.47 feet South 89°44'02" East and 951.69 feet South 0°18'23" West from the Northwest corner of Section 17, T7N, R1E, SLB&M, U.S. Survey; running thence South 0°18'23" West 383.70 feet along said West line to the Southwest corner of said subdivision and the 1/16th line of said Northwest 1/4; thence North 89°37'50" West 2295.29 feet along said 1/16th line to the Easterly Right-of-Way line of U.S. Highway 162; thence North 26°46'13" West 426.27 feet along said Easterly Right-of-Way line to an existing fence line; thence South 89°44'02" East 2489.52 feet to the point of beginning. Contains 20.955 Acres

SURVEYOR'S CERTIFICATE

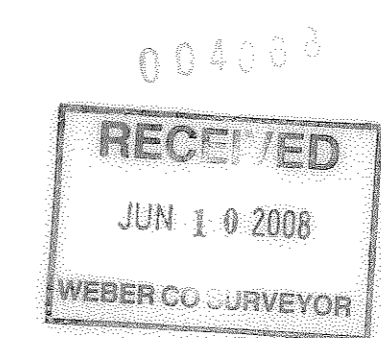
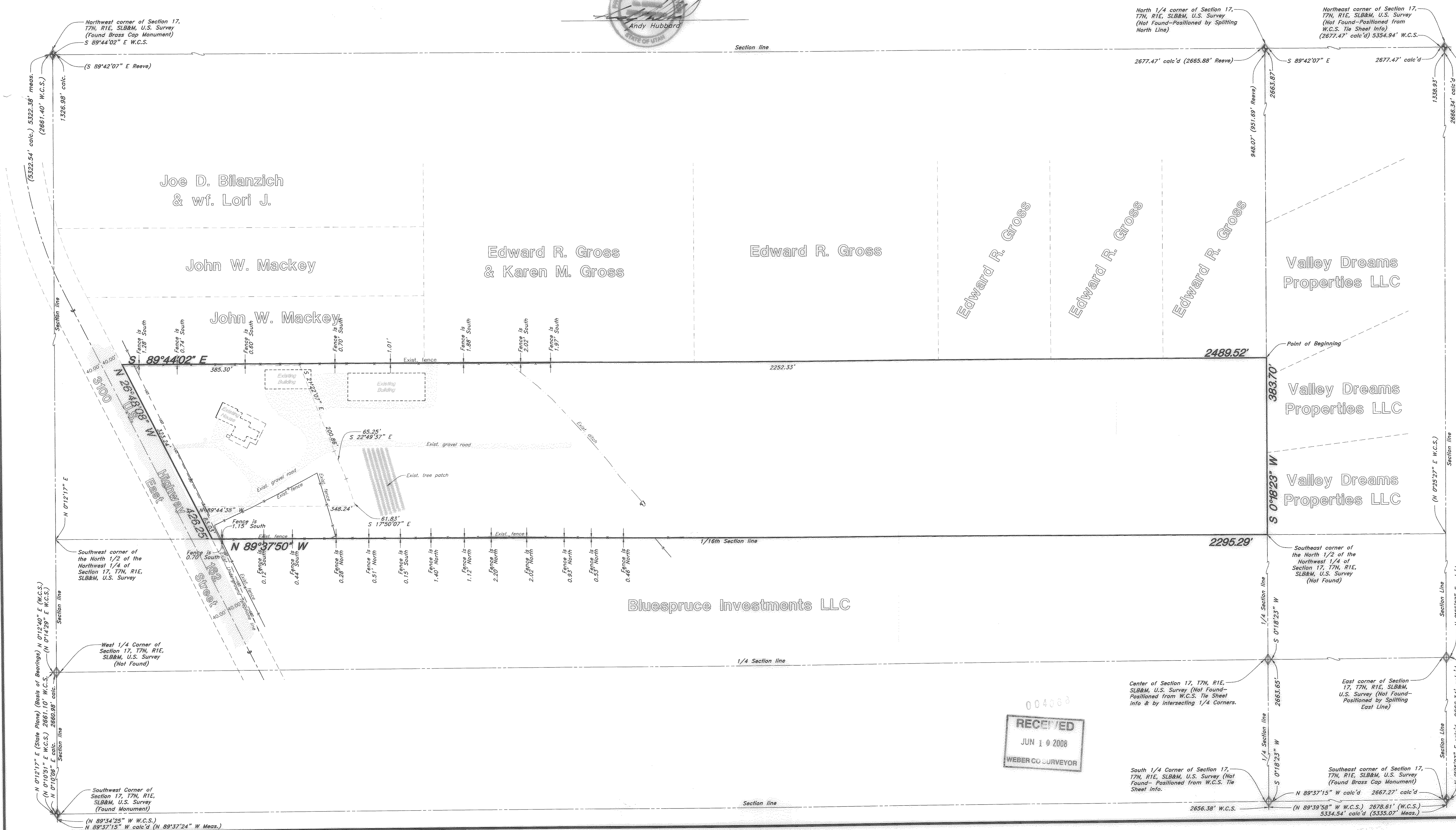
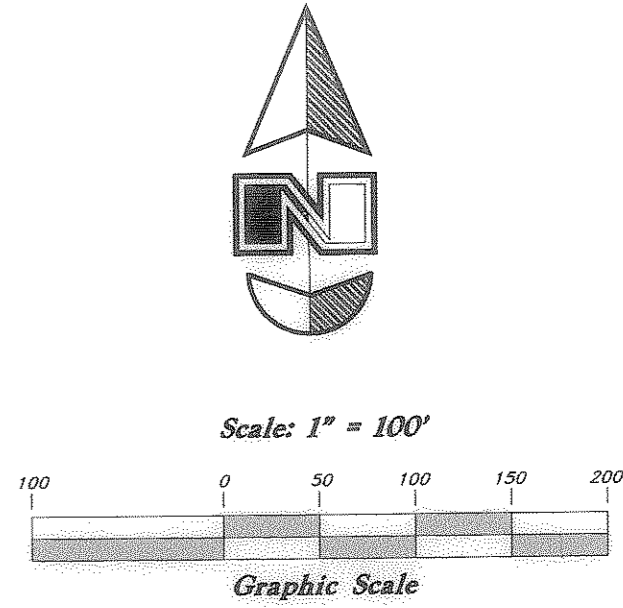
I, Andy Hubbard, do hereby certify that I am a Registered Professional Land Surveyor, and that I hold Certificate No. 6242920, in accordance with Title 58, Chapter 22, of the Professional Engineers and Surveyors Licensing Act, and I have made a survey of the above described property according to Section 17-23-17 and that the above plat correctly shows the true dimensions of the property surveyed.

Date 5-28-2008



LEGEND

—C—	Centerline	TA	Top of Asphalt	C.M.P.	Corrugated Metal Pipe
-UGT-	Buried Telephone line	EA	Edge of Asphalt	R.C.P.	Reinforced Concrete Pipe
-OHT-	Overhead Telephone line	NG	Natural Ground	C.O.C.	Edge of Concrete
-OHP-	Overhead Power line	LG	Lip of Gutter	R.WALL	Retaining Wall
-UGP-	Power line	SP	Service Pole	SMH	Sewer Manhole
-W-	Sanitary Sewer line	LP	Light Pole	WV	Water Valve
-CW-	Culinary Water line	PP	Power Pole	CB	Catch Basin
-G-	Gas line	TP	Telephone Pole	DV	Diversion Box
-SD-	Storm Drain line	FH	Fire Hydrant	TC	Top of Curb
-SW-	Secondary Waterline	DIT	Flowline of Ditch	SW	Sidewalk
-LD-	Land Drain line	TOS	Toe of Slope	GAS	Gas line Marker
-IW-	Irrigation Waterline	TOP	Top of Slope	GUY	Guy Wire
-F-	Fence	CD	Cleanout	BLCG	Building Corner
-P-	Power Pole	FC	Fence	NG	Natural Ground
-M-	Post	DMH	Drain Manhole	Ω	Fire Hydrant
-W-	Water Meter	Flowline	Flowline	WV	Water Valve
-TB-	Telephone Box	Spot	Spot Elevation	LP	Light Pole
-SMB-	Sewer Manhole	Contour	Contour	Power Pole w/guy	
-DMH-	Drain Manhole	Asphalt	Asphalt	Deciduous Tree	
-WMH-	Water Manhole	Concrete	Concrete	Coniferous Tree	
-WB-	Water Manhole	Building	Building		
-CB-	Cleanout Box	Catch Basin	Catch Basin		



GREAT BASIN ENGINEERING NORTH
 CONSULTING ENGINEERS AND SURVEYORS
 5746 South 1475 East - Suite 200
 Provo, Utah 84403
 P.O. Box 150046, Ogden, Utah 84415
 Ogden (801)394-6515 Salt Lake City (801)241-0222 Fax (801)392-7944

Property Survey
Kendrick Brothers
 A part of the Northwest 1/4 of Section 17, T7N, R1E, SLB&M, U.S. Survey, Liberty City, Weber County, Utah

8 May, 2008
 SHEET NO.
08N902