

DRAWING NUMBER

000407

PLAN HOLD CORPORATION IRVINE, CALIFORNIA  
ORDER BY NUMBER 0754P  
POSITION EDGE OF PRINT ON THIS LINE

DRAWING NUMBER

000407

PLAN HOLD CORPORATION IRVINE, CALIFORNIA  
ORDER BY NUMBER 0754P  
POSITION EDGE OF PRINT ON THIS LINE

DRAWING NUMBER

000407

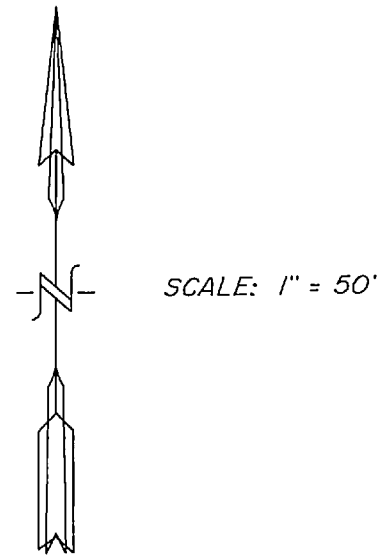
PLAN HOLD CORPORATION IRVINE, CALIFORNIA  
ORDER BY NUMBER 0754P  
POSITION EDGE OF PRINT ON THIS LINE

DRAWING NUMBER

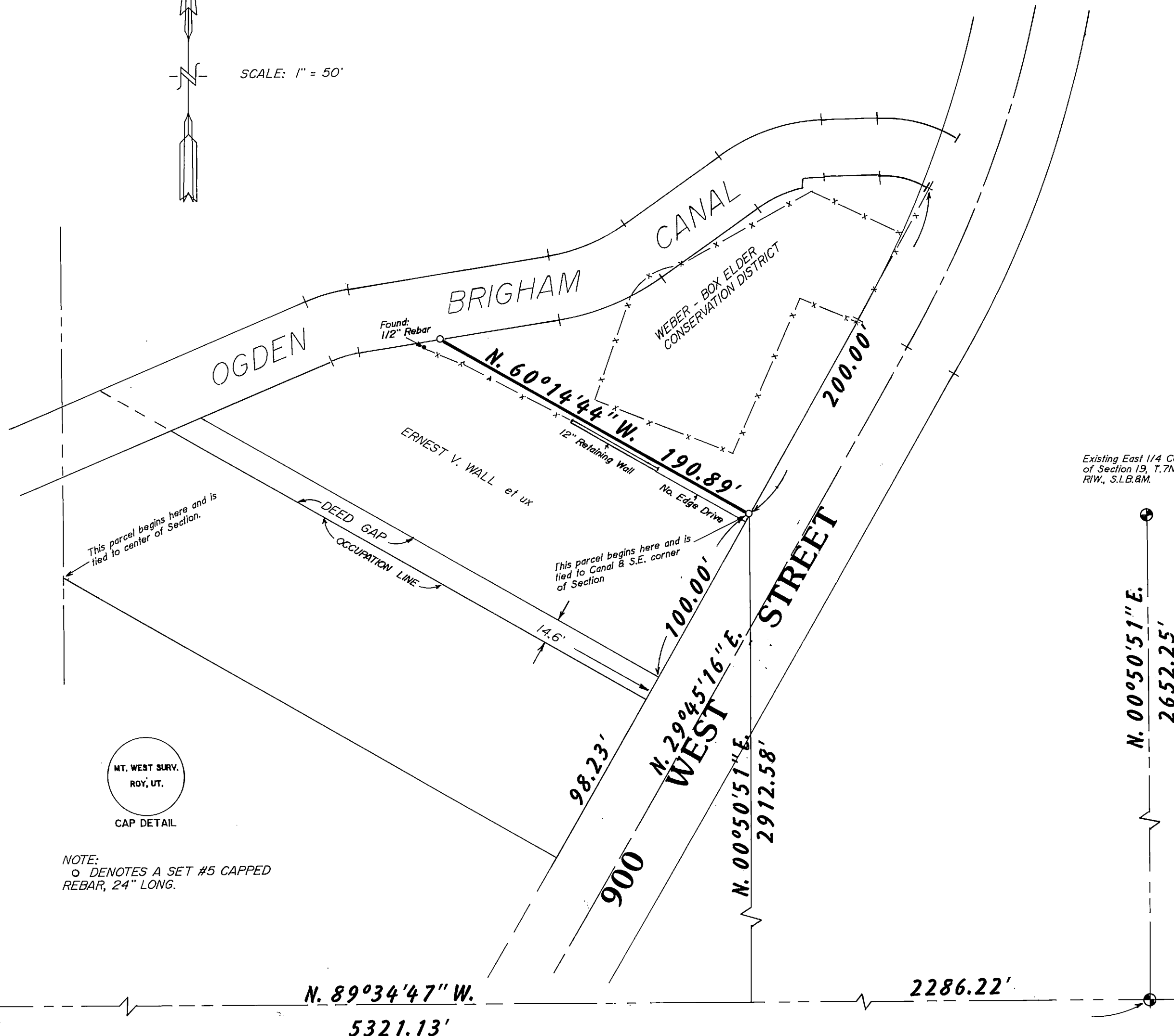
000407

PLAN HOLD CORPORATION IRVINE, CALIFORNIA  
ORDER BY NUMBER 0754P  
POSITION EDGE OF PRINT ON THIS LINE

# PROPERTY SURVEY



SCALE: 1" = 50'

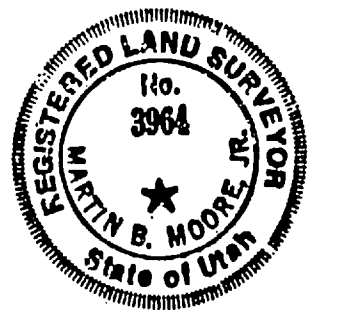


DESCRIPTION OF PROPERTY LINE  
BEING SITUATED IN THE NORTHEAST QUARTER OF SECTION 19,  
TOWNSHIP 7 NORTH, RANGE 1 WEST, SALT LAKE BASE AND MERIDIAN, AND  
DESCRIBED AS FOLLOWS:  
BEGINNING AT A POINT ON THE WEST RIGHT-OF-WAY LINE OF 900  
WEST STREET, SAID POINT BEING N.89°34'47"W.. 2286.22 FEET. AND  
N.00°50'51"E., 2912.58 FEET FROM THE WEBER COUNTY MONUMENT MARKED  
AS BEING THE SOUTHEAST CORNER OF SAID SECTION 19. SAID POINT  
FURTHER BEING S.29°45'16"W.. 200 FEET FROM THE INTERSECTION OF  
THE WEST LINE OF 900 WEST STREET. AND THE SOUTH LINE OF THE OGDEN  
BRIGHAM CANAL, AND RUNNING;  
THENCE N.60°14'44"W., 190.89 FEET TO THE SOUTHERLY LINE OF  
THE OGDEN BRIGHAM CANAL.

NARRATIVE OF SURVEY  
THE PURPOSE OF THIS SURVEY WAS TO LOCATE THE COMMON PROPERTY  
LINE BETWEEN THE PROPERTY OF ERNEST V. WALL et ux, AND THE  
PROPERTY OF THE WEBER-BOX ELDER CONSERVATION DISTRICT. THE WALL  
PROPERTY WAS TIED TO THE CENTER OF SECTION, AND THE CONSERVATION  
DISTRICT PROPERTY WAS TIED TO THE SOUTHEAST CORNER OF THE  
SECTION, AND ALSO THE SOUTH LINE OF THE OGDEN BRIGHAM CANAL.  
THE TIE TO THE CANAL WAS PARAMOUNT IN RELOCATING SAID LINE. TIES  
TO THE SOUTHEAST CORNER OF THE SECTION WERE VAGUE, AND THERE IS  
NO CONCLUSION THAT THE MONUMENT EXISTS IN THE SAME LOCATION AS  
WHEN THE DEEDS WERE WRITTEN. THE NOTES ON THE PLAT SHOW THE  
RESULTS.

I, MARTIN B. MOORE JR., UTAH REGISTERED LAND SURVEYOR NO.  
3964 DO HEREBY CERTIFY THAT THIS PLAT WAS PREPARED FROM A SURVEY  
MADE ON THE GROUND BY ME, OR UNDER MY SUPERVISION, AT THE REQUEST  
OF WEBER-BOX ELDER CONSERVATION DISTRICT, AND ON BEHALF OF  
MOUNTAIN WEST PROFESSIONAL LAND SURVEYORS P.C., AND IS TRUE AND  
CORRECT TO THE BEST OF MY KNOWLEDGE AND BELIEF.

*Martin B. Moore Jr.*  
MARTIN B. MOORE JR.



NOTE:  
O DENOTES A SET #5 CAPPED  
REBAR, 24" LONG.

Weber County Monument  
S.W. Corner of Section 19,  
T.7N., R.1W., S.L.B.M.

Weber County Monument  
S.E. Corner of Section 19,  
T.7N., R.1W., S.L.B.M.

RECEIVED  
OCT 22 1990  
Weber County Surveyor

**RECORD OF SURVEY**  
for  
**ONESCO ENGINEERING**

A Part Of The Northeast Quarter Of Section 19,  
Township 7 North, Range 1 West, Salt Lake Base & Meridian

Date	No	Drwn	ckd
10/11/90	90-1015-E	RLW	MEM

MOUNTAIN WEST PROFESSIONAL  
LAND SURVEYORS, P.C.  
Roy, Utah

000407