

Found 3" Brass Cap Monument
@ S.E. Corner of NE 1/4 of Sec. 23,
T9N, R2W, S1B. & M., U.S. Survey.

Found 3" Brass Cap Monument
@ N.E. Corner of NE 1/4 of Sec. 23,
T9N, R2W, S1B. & M., U.S. Survey.

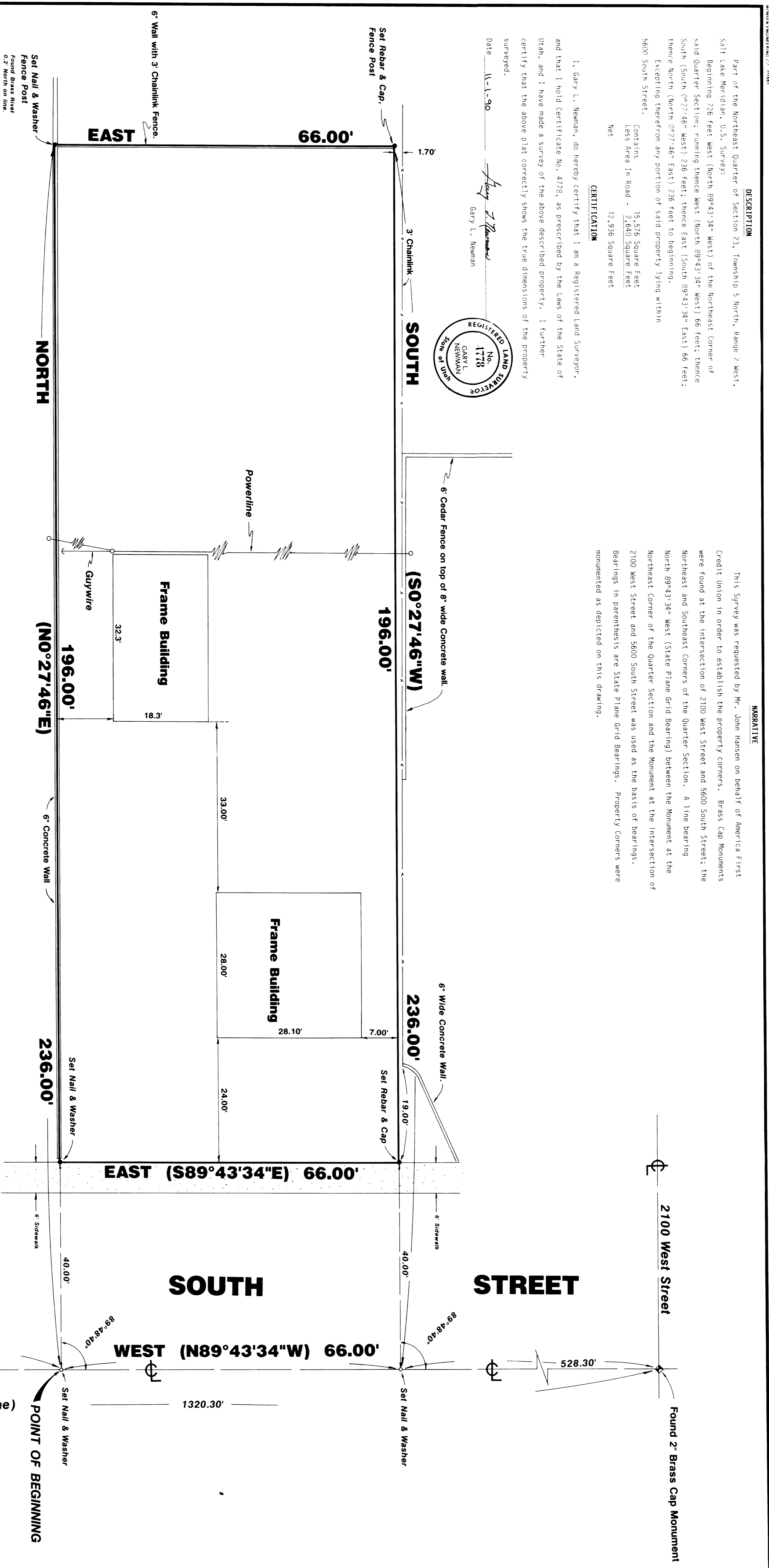
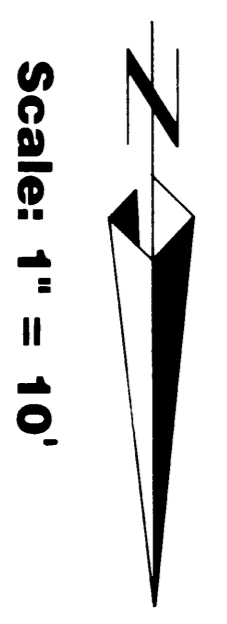
GREAT BASIN ENGINEERING, INC.
REGISTERED PROFESSIONAL ENGINEERS
ODDEN & SALT LAKE CITY, UTAH

Property Survey For
JOHN HANSEN
Located in part of the NE 1/4 Section 23,
T9N, R2W, S1B. & M., U.S. Survey

Drawn: R. Porter
Checked: G. Newman
Date: 11-17-00
Project: 000418
PS-30-58

NOTE: Bearings in parenthesis are State Plane
Grid Bearings according to information
from Weber County Surveyor (W.C.S.).

RECEIVED
DEC 07 1990
Weber County Surveyor



Found 3" Brass Cap Monument
@ S.E. Corner of NE 1/4 of Sec. 23,
T9N, R2W, S1B. & M., U.S. Survey.

Found 3" Brass Cap Monument
@ N.E. Corner of NE 1/4 of Sec. 23,
T9N, R2W, S1B. & M., U.S. Survey.

GREAT BASIN ENGINEERING, INC.
REGISTERED PROFESSIONAL ENGINEERS
ODDEN & SALT LAKE CITY, UTAH

Property Survey For
JOHN HANSEN
Located in part of the NE 1/4 Section 23,
T9N, R2W, S1B. & M., U.S. Survey

Drawn: R. Porter
Checked: G. Newman
Date: 11-17-00
Project: 000418
PS-30-58

NOTE: Bearings in parenthesis are State Plane
Grid Bearings according to information
from Weber County Surveyor (W.C.S.).

RECEIVED
DEC 07 1990
Weber County Surveyor

