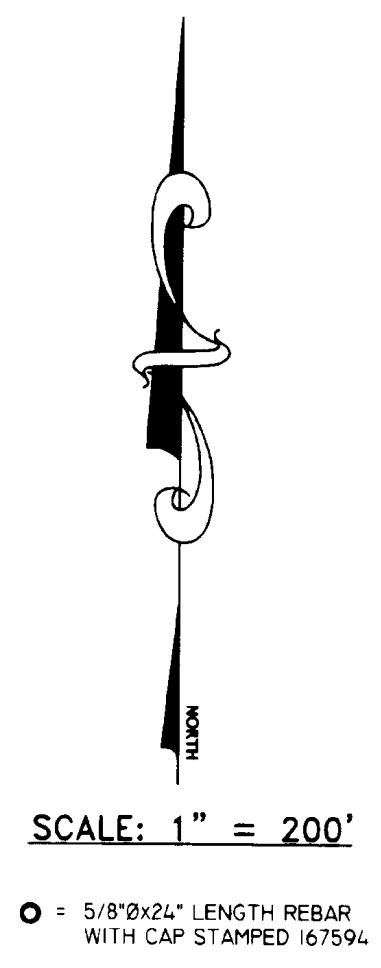
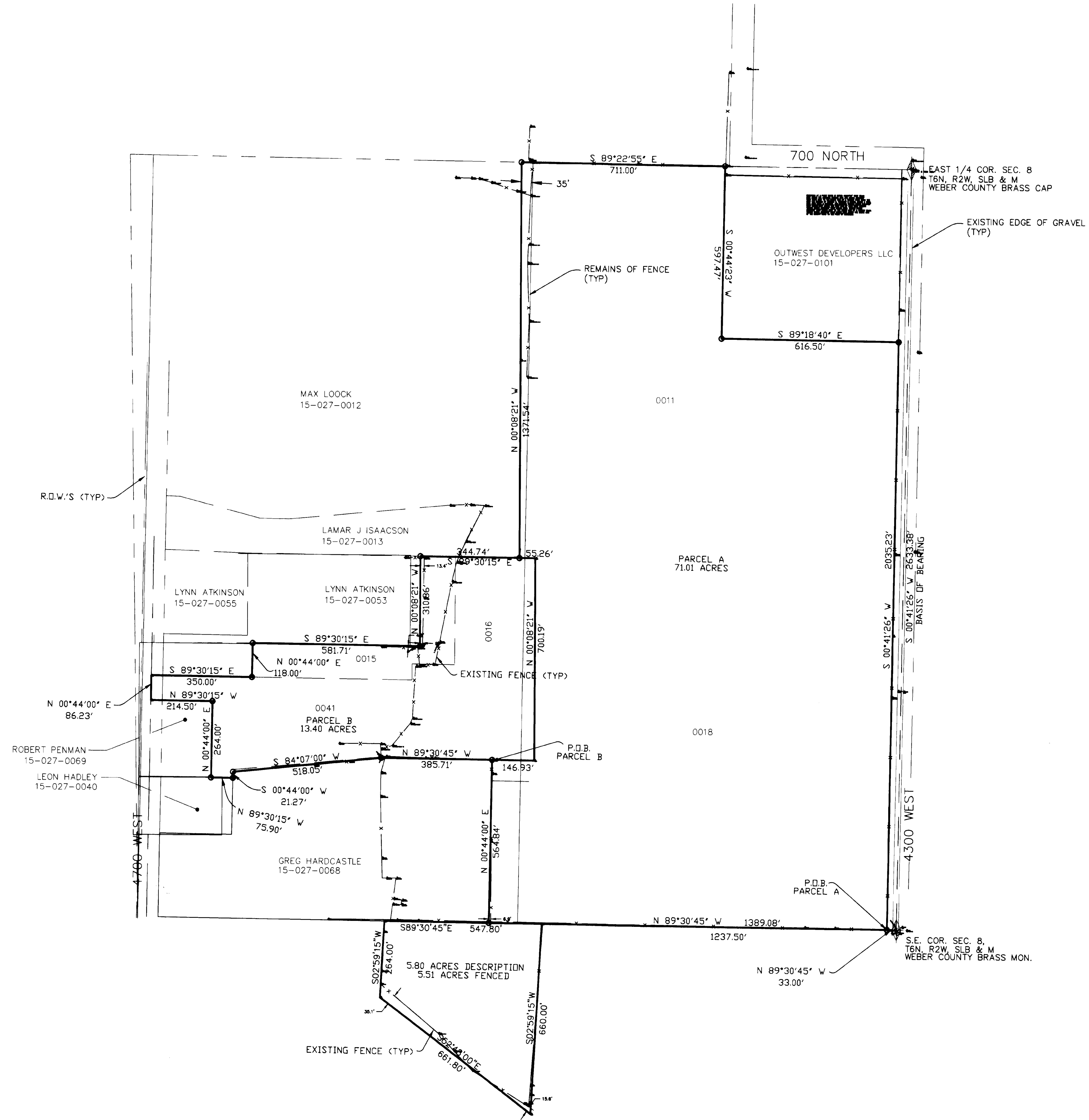


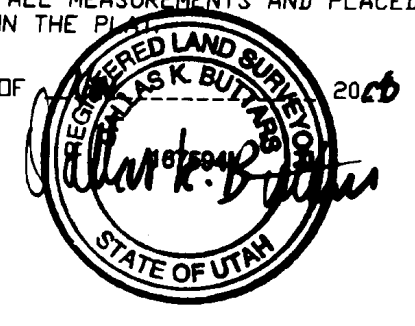
RECORD OF SURVEY

PART OF THE SOUTHEAST QUARTER OF SECTION 8, T.6N. R.2W., S. L.B. & M. WEST WEBER CITY, WEBER COUNTY, UTAH



SURVEYOR'S CERTIFICATE

I, DALLAS K. BUTTARS, HOLDING LICENSE NUMBER 167594 IN ACCORDANCE WITH TITLE 59, CHAPTER 22, PROFESSIONAL ENGINEERS AND LAND SURVEYORS LICENSING ACT, HAVE COMPLETED A SURVEY OF THE PROPERTY DESCRIBED ON THE PLAT IN ACCORDANCE WITH SECTION 17-23-17 AND HAVE VERIFIED ALL MEASUREMENTS AND PLACED MONUMENTS AS REPRESENTED ON THE PLAT.



SURVEYED BOUNDARY DESCRIPTION A

PART OF THE SOUTHEAST QUARTER AND SOUTHWEST QUARTER OF SECTION 8, TOWNSHIP 6 NORTH, RANGE 2 WEST, SALT LAKE BASE AND MERIDIAN BEGINNING AT A POINT NORTH 89°30'45" WEST 33.00 FEET ALONG THE QUARTER SECTION LINE AND NORTH 0°44'00" EAST 564.84 FEET FROM THE SOUTHEAST CORNER OF SAID SECTION 8, RUNNING THENCE NORTH 89°30'45" WEST 1389.94 FEET ALONG THE QUARTER SECTION LINE; THENCE NORTH 00°44'00" EAST 564.84 FEET; THENCE SOUTH 89°30'45" EAST 146.93 FEET; THENCE NORTH 0°08'21" WEST 700.19 FEET; THENCE NORTH 89°31'15" WEST 55.26 FEET; THENCE NORTH 00°08'21" WEST 1371.54 FEET; THENCE SOUTH 89°22'55" EAST 711.00 FEET; THENCE SOUTH 00°44'23" WEST 597.47 FEET; THENCE SOUTH 89°18'40" EAST 616.50 FEET; THENCE SOUTH 00°41'26" WEST 2035.23 FEET TO THE POINT OF BEGINNING. CONTAINS 71.01 ACRES.

SURVEYED BOUNDARY DESCRIPTION B

PART OF THE SOUTHEAST QUARTER AND SOUTHWEST QUARTER OF SECTION 8, TOWNSHIP 6 NORTH, RANGE 2 WEST, SALT LAKE BASE AND MERIDIAN BEGINNING AT A POINT NORTH 89°30'45" WEST 1421.94 FEET ALONG THE QUARTER SECTION LINE AND NORTH 0°44'00" EAST 564.84 FEET FROM THE SOUTHEAST CORNER OF SAID SECTION 8, RUNNING THENCE SOUTH 89°30'45" EAST 385.71 FEET; THENCE SOUTH 84°07'00" WEST 518.05 FEET; THENCE SOUTH 00°44'00" WEST 212.7 FEET; THENCE NORTH 89°30'15" WEST 75.90 FEET; THENCE NORTH 00°44'00" EAST 264.00 FEET; THENCE NORTH 89°30'15" WEST 214.50 FEET; THENCE NORTH 00°44'00" EAST 86.23 FEET; THENCE SOUTH 89°30'15" EAST 350.00 FEET; THENCE NORTH 00°44'00" EAST 118.00 FEET; THENCE SOUTH 89°30'15" EAST 581.71 FEET; THENCE NORTH 00°08'21" WEST 310.86 FEET; THENCE SOUTH 89°30'15" EAST 344.74 FEET; THENCE SOUTH 0°08'21" EAST 700.19 FEET; THENCE NORTH 89°30'45" EAST 146.93 FEET TO THE POINT OF BEGINNING. CONTAINS 13.40 ACRES.

NARRATIVE

THE PURPOSE OF THIS SURVEY WAS TO DETERMINE THE TOTAL ACREAGE OF SEVERAL SEPARATE CONTIGUOUS PARCELS OWNED BY ONE OWNER, FOR THE PARCELS SHOWN ON THIS PLAT. THE BASIS OF BEARING IS UTAH STATE PLANE GRID BEARING.

004193
RECEIVED
NOV 24 2008
WEBER COUNTY SURVEYOR

LANDMARK SURVEYING, INC. A COMPLETE LAND SURVEYING SERVICE 4646 S. 3500 W. RA-3, WEST HAVEN, UTAH 84401 PHONE 801-731-4075 FAX 801-731-8506	
CLIENT: ROBERT PENMAN	
LOCATION: PART OF THE S.E. 1/4 SEC. 8 T.6N. R.2W., S. L.B. & M.	
SURVEYED: APRIL 2008	
REVISIONS:	DRAWN BY: D.B.
	CHECKED BY: DB
	DATE: 04-22-08
	FILE: 3021ros04-22-08.DWG